

1. Business Policies and Operation

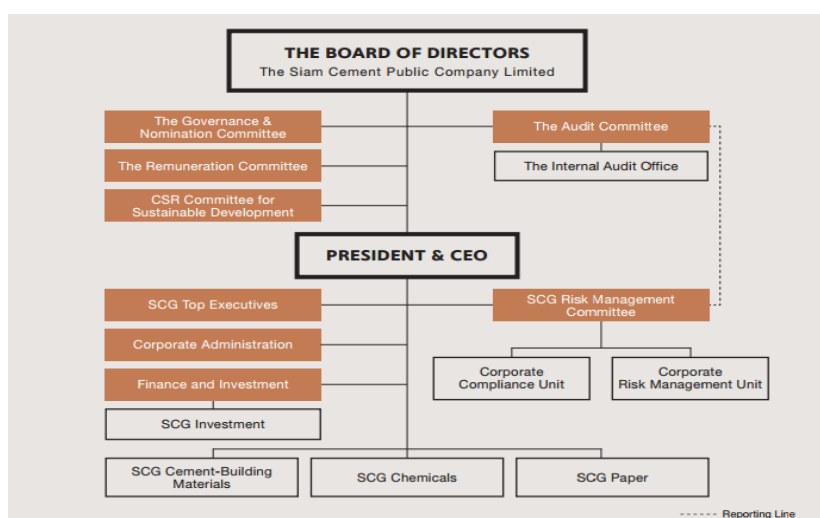
Overview of business and vision

SCG is a leading ASEAN business conglomerate with regional focus, and established commitments towards business conducts that are in line with good corporate governance and sustainable development principles. Established in 1913, following the royal decree of His Majesty King Rama VI, cement products from SCG were the essential materials for the construction of Thailand's infrastructure projects during that period, which have contributed greatly towards the country's modernization. Since its inception, SCG has grown continuously and has earned widespread recognition as a role model for other businesses, both locally and internationally.

In early 2013, SCG restructured its construction related businesses, whereby three business units (cement, building materials, and distribution) were integrated into one single business unit called SCG Cement-Building Materials. The goals of the restructuring process were to increase the operational efficiency, accelerate the development of new products and services so as to address the real needs of the consumers, and to support the long-term business expansions. Today, SCG is comprised of three core business units, namely SCG Cement-Building Materials, SCG Chemicals and SCG Paper.

Our vision is that, SCG will be a regional market leader, contributing to the sustainable progress of ASEAN and the local communities where we operate. Through SCG's world class business practices, corporate governance principles and uncompromising safety standards, we are committed to creating value for our customers, employees, and all other stakeholders. We will constantly ensure that our operational excellence, technology development and innovation will allow us to provide quality products and services in order to enhance the quality of life for all.

Organization Structure of SCG



Please refer to page 5-16 for shareholding structure of direct and indirect ownership of company, associate, subsidiaries, and joint ventures.

Significant developments during 2012 – 2014 are as followed:

2014

- **SCG Cement – Building Materials** – the company has announced the Greenfield investment for 1.8 million tons per year cement plant in Laos which is expected to start up in 2nd quarter of 2017 and also expand its annual production capacity of 2 million tons per year of Mortar in Khonkaen and Lampang with expected commercial operation in the first half of 2016. In addition, SCG Cement – Building Materials and Siam Global House have established joint venture called Global House International to create the construction retail opportunities in warehouse format in ASEAN. Furthermore, the company has acquired stake in Florim Ceramiche S.p.A. (“Florim”) in Italy to manufacture high-end ceramic tiles with capacity of 5 million sq.m. per year which will commercially run in early 2015. Finally, the company has acquired 55% in Panel World company limited which produces and distributes woodchip cement board. Currently, Panel World has capacity of 2.4 million sq.m. per year and is expanding its capacity of 2.4 million sq.m. per year which is expected start operation by the end of 2014.
- **SCG Chemicals** – the company has invested 51% stake in Norner Holding AS, Norwegian research and innovation center specialized in polymerization and plastics application. This investment emphasized our continuous focus in High Valued Added products and services. the other 49% stake will be acquired in September 2015.
- **SCG Paper** – Thai Containers Group (TCG), a 70:30 joint venture between SCG Paper and Rengo Company Limited (Japan), acquired 90% shares of PT Indoris Printingdo, a manufacturer and distributor of offset cartons in Indonesia and 22% shares of Prepack Thailand Company Limited, a manufacturer and distributor of flexible packaging in Thailand. This transaction is the first flagship expansion into the flexible packaging industry. In addition, Dyna Packs Company Limited (a 75% subsidiary of Thai Containers Group Company Limited) acquired 100% shares of D-In-Pack Company Limited, a manufacturer and distributor of corrugated container in Thailand. Furthermore, SCG Paper invested to upgrade the existing asset of Fibrous Chain to produce glassine paper (used in pressure sensitive labels) with 60,000 tons/year capacity, which is expected to start up by early 2016. This investment makes SCG Paper the first major glassine paper producer in ASEAN.

Furthermore, SCG has increased the stake to 20% in Lysando AG, which is a life sciences related R&D firm for HVA growth.

2013

- **SCG Cement – Building Materials** – the company has announced the Greenfield investment for 1.8 million tons per year cement plant in Myanmar which is expected to start up in 2nd quarter of 2016. In addition, SCG Building Materials, a subsidiary of SCG Cement – Building Materials, acquired 85% of Prime Group Joint Stock Company, a leading ceramic tile producer in Vietnam. Furthermore, Cementhai Ceramics Company Limited, a subsidiary of SCG Cement – Building Materials, has increased stake in sanitary ware of Siam Sanitary ware Company Limited and Siam Sanitary Fittings Company Limited from 35.7% and 44.8% to 71.4% and 90.6% respectively. Moreover, SCG Logistics Management Company Limited, subsidiary of SCG Cement – Building Materials, has signed 51:49 joint venture agreement with Nichirei Logistics (Japan) Company Limited to provide temperature-controlled logistics which was fully operated in 3rd quarter of 2014.
- **SCG Chemicals** – founded SCG Eco Polymer Company, a 87%:13% Joint Venture between SCG Chemicals and A.Schulman, Inc. to manufacture Rotational Molding Compound. In addition, SCG Chemicals acquired 100% shares of NSL Chemicals (Thailand) Pte Ltd. Singapore, a shareholder of Bangkok Synthetics – the producer of synthetic rubber. This deal resulted in the SCG Chemicals' share of Bangkok Synthetics increase from 26.01% to 48.84%
- **SCG Paper** – as a 86.3% stake shareholder of Thai Cane Paper Public company Limited (TCP), the company did the tender offering for all remaining shares to take TCP private. In addition, Thai Container Group (TCG), a 70:30 joint venture between SCG Paper and Rengo Company Limited (Japan), acquired 90% ordinary shares of PT Primacorr Mandiri, a manufacturer and distributor of corrugated container in Indonesia and 75% ordinary shares of Dynapacks Company Limited and Orient Container Company Limited, a manufacturer and distributor of corrugated container in Thailand. In addition, SCG Paper has signed a Memorandum of Understanding with Nippon Paper Industries Company Limited (NPI), which will inject equity for 30% stake in SCG Paper's Fibrous Chain to form a joint venture to enhance the competitiveness.

2012

- **SCG Cement – Building Materials** – SCG Cement, a subsidiary of SCG Cement – Building Materials, acquired 100% of the ordinary shares of SCG Concrete Indonesia Group, the construction materials business in Indonesia, and also acquired the net assets of ready-mixed business in Thailand. As a result of shareholders' restructuring in Mariwasa-Siam Ceramics, Inc. (MSC), the manufacture and

distribution of ceramic tiles in the Philippines, the Group's ownerships (direct and indirect) increasing from 46% to 83%. SCG Distribution, a subsidiary of SCG Cement – Building Materials, invested in a 31.25% stake in Siam Global House Public Company Limited which is the retail trade business of building material products operated in a warehouse store.

- **SCG Chemicals** – acquired 45.02% additional interest in Thai Plastic and Chemicals Public Company Limited (TPC) and Nawa Plastic Industries Co., Ltd., a subsidiary of TPC, acquired a 20.40% and 22.67% stake in Binh Minh Plastics Joint Stock Company and Tien Phong Joint Stock Company, respectively. Both are major PVC pipe manufacturers in Vietnam. On the other side, SCG Chemicals sold 25% stake in Long Son Petrochemicals Co., Ltd. To QPI Vietnam.
- **SCG Paper** - Thai Container Group (TCG), a subsidiary (70:30 joint venture between SCG Paper and Rengo Company Limited), acquired 72% of the ordinary shares of Tawana Container Co., Ltd. which is a producer and distributor of corrugated containers in Thailand.

Supplementary Information

Investment in subsidiaries, associates, jointly-controlled entity and other companies of which their operations are significant.

Name	Principal Business / Products	Location (Head Office / Factory)	Telephone	Facsimile	Type of shares	Number of paid-up shares (Million shares)	Issued and paid-up shares (Million Baht)	Direct / Indirect Company and Subsidiaries Holding (Percent)	Total Direct / Indirect Holding * (Percent)	
SCG Cement-Building Materials Subsidiaries										
1	SCG Cement Co., Ltd.	Holding company	Bangkok	66-2586-3060-1	66-2586-3072	Ordinary shares	122	4,894	100	100
2	The Concrete Products and Aggregate Co., Ltd.	Holding company and ready-mixed concrete	Bangkok	66-2555-5000	66-2555-5003	Ordinary shares	91	9,140	100	100
3	The Siam Cement (Kaeng Khoi) Co., Ltd.	Cement	Saraburi	66-3624-0000-98	66-3624-0099	Ordinary shares	6	625	100	100
4	The Siam Cement (Ta Luang) Co., Ltd.	Cement	Saraburi	66-3628-8900	66-3628-8909	Ordinary shares	6	575	100	100
5	The Siam Cement (Thung Song) Co., Ltd.	Cement	Nakorn Sri Thamaraj	66-7553-8222	66-7553-8111	Ordinary shares	35	700	100	100
6	The Siam Cement (Lampang) Co., Ltd.	Cement	Lampang	66-5423-7500	66-5423-7501	Ordinary shares	94	589	100	100
7	Khammouance Cement Co., Ltd.	Cement	Laos	(85621) 243-435-6	(85621) 243-437	Ordinary shares	9	2,758	100	100
						Preferred shares	0.02			
8	Siam Mortar Co., Ltd.	Dry mortar	Saraburi	66-3624-0000-98	66-3624-0083	Ordinary shares	4	443	100	100
9	The Siam White Cement Co., Ltd.	White cement	Saraburi	66-3621-8400	66-3635-1219	Ordinary shares	2	200	100	100
10	The Siam Refractory Industry Co., Ltd.	Refractory	Bangkok	66-2586-3230	66-2586-2982	Ordinary shares	3	300	100	100
11	Cementhai Energy Conservation Co., Ltd.	Energy service	Bangkok	66-2586-2410	66-2586-3098	Ordinary shares	13	1,310	100	100
12	Eco Plant Services Co., Ltd.	Technical services and plant installation	Saraburi	66-3628-9103	66-3628-1212	Ordinary shares	1	50	100	100
13	Siam Research and Innovation Co., Ltd.	Research and development	Saraburi	66-3627-3152-63	66-3627-3151	Ordinary shares	1	100	100	100
14	SCI Eco Services Co., Ltd.	Industrial waste disposal	Nonthaburi	66-2962-7295-7	66-2962-7298	Ordinary shares	1	50	100	100
15	PT Pion Quarry Nusantara	Quarry	Indonesia	(6221) 797-1190	(6221) 797-1090	Ordinary shares	0.001	16	100	100
16	PT SCG Pipe and Precast Indonesia	Concrete products	Indonesia	(6221) 797-1190	(6221) 797-1090	Ordinary shares	14	455	100	100
17	PT Semen Lebak	Cement	Indonesia	(6221) 797-1190	(6221) 797-1090	Ordinary shares	0.03	1,012	100	100
18	PT SCG Readymix Indonesia	Ready-mixed concrete	Indonesia	(6221) 797-1190	(6221) 797-1090	Ordinary shares	7	204	100	100
19	PT CPAC Surabaya	Ready-mixed concrete	Indonesia	(6231) 732-1512	(6231) 732-1512	Ordinary shares	1	43	100	100
20	Q Mix Supply Co., Ltd.	Ready-mixed concrete	Bangkok	66-2728-8800	66-2728-8801	Ordinary shares	8	800	100	100
21	CPAC Lao Co., Ltd.	Ready-mixed concrete	Laos	(85621) 720-385	(85621) 720-224	Ordinary shares	0.05	31	100	100
22	The Concrete Products and Aggregate (Vietnam) Co., Ltd.	Ready-mixed concrete	Vietnam	(8483) 602-7111	(8483) 713-3707	**	-	178	100	100

* Directly and indirectly holding through the Company, subsidiaries, associates, jointly-controlled entity and other companies.

** No issuance of share for the Limited Liability Company incorporated in Vietnam.

The capital contribution is as stipulated in the investment certificate of the invested company.



Name	Principal Business / Products	Location (Head Office / Factory)	Telephone	Facsimile	Type of shares	Number of paid-up shares (Million shares)	Issued and paid-up shares (Million Baht)	Direct / Indirect Company and Subsidiaries Holding (Percent)	Total Direct / Indirect Holding * (Percent)
23 CPAC Concrete Products (Cambodia) Co., Ltd.	Precasted slab	Cambodia	(88523) 990-406	-	Ordinary shares	0.001	17	100	100
24 Silathai Sanguan (2540) Co., Ltd.	Crushing plant	Khonkaen	66-4335-8031	66-4335-8033	Ordinary shares	1	122	100	100
25 Cementhai Building Materials (Singapore) Pte. Ltd.	Holding company	Singapore	(65) 6534-9661	(65) 6534-9662	Ordinary shares	0.6	14	100	100
26 SCG Building Materials Co., Ltd.	Holding company	Bangkok	66-2586-3333	66-2586-2761	Ordinary shares	190	19,009	100	100
27 Cementhai Gypsum Co., Ltd.	Holding company	Bangkok	66-2586-3333	66-2586-2761	Ordinary shares	7	242	100	100
28 Thai Ceramic Holding Co., Ltd.	Holding company	Bangkok	66-2586-3333	66-2586-2761	Ordinary shares	2	200	100	100
29 MRC Roofing Co., Ltd. (Formerly : Monier Roofing Co., Ltd.)	Holding company	Bangkok	66-2555-0055	66-2555-0001	Ordinary shares	9	950	100	100
30 The Siam Fibre-Cement Co., Ltd.	Fiber cement roof	Saraburi	66-2586-3333	66-2586-2761	Ordinary shares	110	11,000	100	100
31 The Fibre-Cement Products (Lampang) Co., Ltd.	Fiber cement roof	Lampang	66-5433-7301-5	66-5433-7300	Ordinary shares	5	530	100	100
32 Tip Fibre-Cement Co., Ltd.	Fiber cement roof	Bangkok	66-2286-7888	66-2286-8951-2	Ordinary shares	0.5	25	100	100
33 SCG Landscape Co., Ltd.	Concrete blocks for floor wall and fence	Saraburi	66-2586-6822	66-2586-6800	Ordinary shares	16	1,630	100	100
34 Siam Fiberglass Co., Ltd.	Insulation and glass wools	Saraburi	66-3637-3441-4	66-3637-3445-6	Ordinary shares	13	422	100	100
35 The CPAC Roof Tile Co., Ltd.	Concrete roof tiles	Nakorn Prathom/ Saraburi / Lamphun / Nakorn Sri Thamaraj / Chonburi / Khonkaen / Nakorn rajchasrma	66-2586-4032-4 66-2586-4037-9	66-2586-4308	Ordinary shares	2	211	100	100
36 SCG Concrete Roof (Vietnam) Co., Ltd.	Concrete roof tiles	Vietnam	(84650) 767-581-4	(84650) 767-580	**	-	235	100	100
37 SCG Roofing Philippines, Inc. (Formerly : CPAC Monier Philippines, Inc.)	Concrete roof tiles	Philippines	(6349) 703-0193	(632) 836-2254	Ordinary shares	206	159	100	100
38 SCG Concrete Roof (Cambodia) Co., Ltd. (Formerly : CPAC Monier (Cambodia) Co., Ltd.)	Concrete roof tiles	Cambodia	(85523) 454-388	-	Ordinary shares	0.1	43	100	100
39 Thai Ceramic Roof Tile Co., Ltd.	Ceramic roof tiles	Saraburi	66-2586-5999	66-2586-5017	Ordinary shares	2	200	100	100
40 Cementhai Ceramics Co., Ltd.	Holding company	Bangkok	66-2586-3333	66-2586-2761	Ordinary shares	60	6,037	100	100
41 Cementhai Gypsum (Singapore) Pte. Ltd.	Holding company	Singapore	(65) 6297-9661	(65) 6297-9662	Ordinary shares	21	411	100	100
42 Cementhai Roof Holdings Philippines, Inc.	Holding company	Philippines	(6343) 778-2942	(6343) 778-2934	Ordinary shares	14	136	100	100
43 Cementhai Ceramic (Singapore) Pte. Ltd.	Holding company	Singapore	(65) 6297-9661	(65) 6297-9662	Ordinary shares	39	1,342	100	100
44 Cementhai Ceramics Philippines Holdings, Inc.	Holding company	Philippines	(6343) 778-2942	(6343) 778-2934	Ordinary shares	174	192	100	100
45 Keating Capital Partners Pte. Ltd.	Holding company	Singapore	(65) 6338-1888	(65) 6337-5100	Ordinary shares	14	400	100	100
46 Kitchener Limited	Holding company	Hong Kong	(852) 2846-1888	(852) 2845-0476	Ordinary shares	16	452	100	100

* Directly and indirectly holding through the Company, subsidiaries, associates, jointly-controlled entity and other companies.

** No issuance of share for the Limited Liability Company incorporated in Vietnam.

The capital contribution is as stipulated in the investment certificate of the invested company.



Part 1 Business Operation / 1. Business Policies and Operation

The Siam Cement Public Company Limited

Name	Principal Business / Products	Location (Head Office / Factory)	Telephone	Facsimile	Type of shares	Number of paid-up shares (Million shares)	Issued and paid-up shares (Million Baht)	Direct / Indirect Company and Subsidiaries Holding (Percent)	Total Direct / Indirect Holding * (Percent)
47 Thai Ceramic Co., Ltd.	Floor and wall ceramic tiles	Bangkok	66-2586-4094-8	66-2587-8800	Ordinary shares	32	3,160	100	100
48 The Siam Ceramic Group Industries Co., Ltd.	Floor and wall ceramic tiles	Saraburi	66-3637-6400	66-3637-6422	Ordinary shares	96	960	100	100
49 Cementhai Home Services Co., Ltd.	Home-related services	Bangkok	66-2586-4111	66-2586-4017	Ordinary shares	5	115	100	100
50 Gemago Co., Ltd.	Electricity plant	Bangkok	66-2586-3333	66-2586-2761	Ordinary shares	0.5	45	100	100
51 PT SCG Lightweight Concrete Indonesia	Light-weight concrete	Indonesia	(6226) 7861-0360	(6226) 7861-0361	Ordinary shares	4	1,253	100	100
52 SCG Distribution Co., Ltd.	Holding company	Bangkok	66-2586-3333	66-2586-5454	Ordinary shares	220	12,150	100	100
53 SCG Cement-Building Materials Company Limited	Domestic distribution	Bangkok	66-2586-3333	66-2586-2961	Ordinary shares	21	524	100	100
54 SCG Trading Co., Ltd.	International trading	Bangkok	66-2586-3333	66-2586-2251	Ordinary shares	4	400	100	100
55 SCG Trading Australia Pty. Ltd.	International trading	Australia	(612) 9438-1225	(612) 9436-0195	Ordinary shares	0.2	5	100	100
56 SCG Trading Guangzhou Co., Ltd.	International trading	China	(86) 208-365-2559	(86) 208-365-2595	Ordinary shares	0.03	24	100	100
57 SCG Trading Hong Kong Limited	International trading	Hong Kong	(852) 2838-6456	(852) 3009-8360	Ordinary shares	45	220	100	100
58 SCG Trading Philippines Inc.	International trading	Philippines	(632) 501-8634 (632) 501-8630	(632) 501-8635	Ordinary shares	0.1	8	100	100
59 SCG Singapore Trading Pte. Ltd.	International trading	Singapore	(65) 6295-3455	(65) 6292-5241	Ordinary shares	1	23	100	100
60 SCG Trading USA Inc.	International trading	USA	(1310) 323-2194 (1310) 323-2438 (1310) 323-2528	(1310) 324-9528	Ordinary shares	0.02	36	100	100
61 PT SCG Trading Indonesia	International trading	Indonesia	(6221) 351-8890	(6221) 352-0718	Ordinary shares	0.002	5	100	100
62 SCG Trading Vietnam Co., Ltd.	Logistics service, international trading and local distribution	Vietnam	(848) 352-69001-08 (84) 903-449-633	(848) 352-69009-10	**	-	64	100	100
63 SCG Trading Lao Co., Ltd.	International trading	Laos	(85621) 243-435-6	(85621) 243-437	Ordinary shares	0.02	11	100	100
64 SCG Marketing Philippines Inc.	International trading	Philippines	(632) 501-8634 (632) 501-8634	(632) 501-8635	Ordinary shares	0.4	30	100	100
65 SCGT Malaysia Sdn. Bhd.	International trading	Malaysia	(603) 5632-0168	(603) 5632-0158	Ordinary shares	0.4	4	100	100
66 SCG Trading (Cambodia) Co., Ltd.	International trading	Cambodia	(85523) 990-401-5	(85523) 990-400	Ordinary shares	0.0001	1	100	100
67 Siam Cement Myanmar Trading Ltd.	International trading	Myanmar	(959) 873-0462	(951) 548-058	Ordinary shares	0.0002	3	100	100
68 SCG Logistics Management Co., Ltd.	Logistics service	Bangkok	66-2586-3333	66-2586-2158	Ordinary shares	11	1,078	100	100
69 SCG Logistics Management (Lao) Co., Ltd.	Logistics service	Laos	(856) 41-9591-9652	-	Ordinary shares	0.004	0.4	100	100
70 SCG Logistics Management (Cambodia) Co., Ltd.	Logistics service	Cambodia	(85523) 966-206	(85523) 966-205	Ordinary shares	0.03	11	100	100
71 SCG Trading Services Co., Ltd.	Business services	Bangkok	66-2586-3333	66-2586-4445	Ordinary shares	0.1	10	100	100
72 Myanmar CBM Services Co., Ltd.	Business services	Myanmar	(951) 227-579	(951) 227-579	Ordinary shares	0.01	35	100	100

* Directly and indirectly holding through the Company, subsidiaries, associates, jointly-controlled entity and other companies.

** No issuance of share for the Limited Liability Company incorporated in Vietnam.

The capital contribution is as stipulated in the investment certificate of the invested company.



Name	Principal Business / Products	Location (Head Office / Factory)	Telephone	Facsimile	Type of shares	Number of paid-up shares (Million shares)	Issued and paid-up shares (Million Baht)	Direct / Indirect Company and Subsidiaries Holding (Percent)	Total Direct / Indirect Holding * (Percent)
73 SCG Sourcing Co., Ltd.	Retail	Bangkok	66-2586-3333	66-2586-5625	Ordinary shares	1	100	100	100
74 SCG Experience Co., Ltd.	Exhibition center services and consultation	Bangkok	66-2101-9922	66-2101-9920	Ordinary shares	5	500	100	100
75 SCG Skills Development Co., Ltd.	Logistics skills development school for SCG business partners	Saraburi	66-3672-4377	66-3672-4378	Ordinary shares	0.1	5	100	100
76 Buu Long Industry & Investment Joint Stock Company	White cement	Vietnam	(8461) 396-5475	(8461) 396-5478	Ordinary shares	4	56	99	99
77 Kampot Cement Co., Ltd.	Cement	Cambodia	(85523) 996-839	(85523) 996-849	Ordinary shares	13	4,281	97	97
78 PT KIA Serpih Mas	Floor and wall ceramic tiles	Indonesia	(6221) 386-2322	(6221) 386-2253	Ordinary shares	3,143	1,528	97	97
79 PT KIA Keramik Mas	Ceramic roof tiles	Indonesia	(6221) 386-2322	(6221) 386-2253	Ordinary shares	2,926	2,162	96	96
80 PT Keramik Indonesia Asosiasi, Tbk.	Floor and wall ceramic tiles	Indonesia	(6221) 386-2322	(6221) 386-2253	Ordinary shares	14,929	5,603	96	96
81 PT Semen Jawa	Cement	Indonesia	(6221) 350-9491	(6221) 350-9704	Ordinary shares	98	4,046	95	95
82 PT Kokoh Inti Arebama Tbk.	Building materials distribution	Indonesia	(6221) 350-6227	(6221) 350-1767	Ordinary shares	981	350	91	91
83 The Siam Sanitary Fittings Co., Ltd.	Faucets and fittings	Bangkok	66-2973-5101-7	66-2973-5108-9	Ordinary shares	2	200	91	91
84 PT Tambang Semen Sukabumi	Limestone Quarry	Indonesia	(6221) 350-9491	(6221) 350-9704	Ordinary shares	3	8	91	91
85 Sosuco and Group (2008) Co., Ltd.	Marketing and sales of floor and wall ceramic tiles	Bangkok	66-2938-9833	66-2938-9839	Ordinary shares	1	50	90	90
86 Prime Group Joint Stock Company	Holding company	Vietnam	(84) 211-3888-987	(84) 211-3888-986	Ordinary shares	101	1,413	85	85
87 Prime Trading, Import and Export One Member Limited Liability Company	Marketing and sales of floor and wall ceramic tiles	Vietnam	(84) 211-2212-842	(84) 211-3898-276	**	-	420	85	85
88 Prime Materials Company Limited	Exploration and processing material	Vietnam	(84) 211-3888-987	(84) 211-3888-986	**	-	0.02	85	85
89 Ceramic Research Institution	Research and development new technology, materials and products	Vietnam	(84) 211-3582-345	(84) 211-3898-275	**	-	7	85	85
90 Prime International Im-Ex & Servicing Trading Co., Ltd.	Marketing and sales of machine and spare part	Vietnam	(84) 43-7877-139	(84) 43-7877-138	**	-	6	85	85
91 Prime Ngoi Viet Joint Stock Company	Clay roof tiles	Vietnam	(84) 211-3597-696	(84) 211-3597-702	Ordinary shares	25	350	85	85
92 Prime Pho Yen Joint Stock Company	Floor ceramic tiles	Vietnam	(84) 280-3866-632	(84) 280-3866-474	Ordinary shares	15	210	85	85
93 Prime Yen Binh Joint Stock Company	Wall ceramic tiles	Vietnam	(84) 211-3866-152	(84) 211-3866-154	Ordinary shares	13	182	85	85
94 Prime Truong Xuan Joint Stock Company	Water heater and mechanical	Vietnam	(84) 211-3726-552	(84) 211-3721-786	Ordinary shares	6	84	85	85
95 Prime Mineral Joint Stock Company	Exploration and processing material	Vietnam	(84) 211-3728-770	(84) 211-3726-547	Ordinary shares	0.4	6	85	85
96 Saraburirat Co., Ltd.	Concrete floor and wall tiles	Saraburi	66-2586-3333	66-2586-6800	Ordinary shares	1	96	83	83

* Directly and indirectly holding through the Company, subsidiaries, associates, jointly-controlled entity and other companies.

** No issuance of share for the Limited Liability Company incorporated in Vietnam.

The capital contribution is as stipulated in the investment certificate of the invested company.



Name	Principal Business / Products	Location (Head Office / Factory)	Telephone	Facsimile	Type of shares	Number of paid-up shares (Million shares)	Issued and paid-up shares (Million Baht)	Direct / Indirect Company and Subsidiaries Holding (Percent)	Total Direct / Indirect Holding * (Percent)
97 Mariwasa-Siam Ceramics, Inc.	Floor and wall ceramic tiles	Philippines	(632) 717-6901	(6343) 778-2934	Ordinary shares	600	430	80	83
98 PT Surya Siam Keramik	Ceramic floor tiles	Indonesia	(6221) 5696-2458	(6221) 5696-1635	Ordinary shares	0.01	87	80	80
99 Myanmar CPAC Service Co., Ltd.	Ready-mixed concrete	Myanmar	(951) 681-351	(951) 681-351	Ordinary shares	4	153	80	80
100 Prime Dai Viet Joint Stock Company	Floor and wall ceramic tiles	Vietnam	(84) 211-3845-238	(84) 211-3844-464	Ordinary shares	13	182	77	77
101 Prime Thein Phuc Joint Stock Company	Exploration and processing material	Vietnam	(84) 54-3626-282	(84) 54-3752-292	Ordinary shares	5	70	77	77
102 Prime Phong Dien Joint Stock Company	Manufacture of material	Vietnam	(84) 54-3751-222	(84) 54-3751-222	Ordinary shares	3	35	77	77
103 Prime Dai Thinh Joint Stock Company	Real Estate Business	Vietnam	(84) 211-3888-987	(84) 211-3888-986	Ordinary shares	0.01	0.2	77	77
104 Prime Dai Loc Joint Stock Company	Floor and wall ceramic tiles	Vietnam	(84) 510-3761-762	(84) 510-3761-763	Ordinary shares	30	414	76	76
105 CPAC Cambodia Co., Ltd.	Ready-mixed concrete	Cambodia	(85523) 356-677	-	Ordinary shares	0.2	5	75	75
106 Thai-German Ceramic Industry Public Company Lim	Floor and wall ceramic tiles	Saraburi	66-2790-9800	66-2790-9890	Ordinary shares	1,698	1,698	75	75
107 Prime Dai An Joint Stock Company	Exploration and processing material	Vietnam	(84) 211-3728-770	(84) 211-3726-547	Ordinary shares	3	35	75	75
108 Prime Hop Thinh Joint Stock Company	Industrial Park Development	Vietnam	(84) 211-3888-987	(84) 211-3888-986	Ordinary shares	0.001	0.01	72	72
109 Siam Sanitary Ware Co., Ltd.	Sanitary ware	Bangkok	66-2973-5040-54	66-2973-3470	Ordinary shares	1	60	71	71
110 Siam Sanitary Ware Industry Co., Ltd.	Sanitary ware	Saraburi	66-2973-5040-54	66-2973-3470	Ordinary shares	2	200	71	71
111 Siam Sanitary Ware Industry (Nongkae) Co., Ltd.	Sanitary ware	Saraburi	66-2973-5040-54	66-2973-3470	Ordinary shares	2	160	71	71
112 Prime Tien Phong Joint Stock Company	Floor and wall ceramic tiles	Vietnam	(84) 211-3888-174	(84) 211-3887-747	Ordinary shares	12	168	71	71
113 MAWLAMYINE CEMENT LIMITED	Cement	Myanmar	(951) 225-812	(951) 222-132	Ordinary shares	0.1	1,520	70	70
114 Quality Construction Products Public Company Limit	Light-weight concrete	Phra Nakhon Si Ayutthaya	66-3522-1271	66-3522-1270	Ordinary shares	400	400	68	68
115 Q-Con Eastern Co., Ltd.	Light-weight concrete	Rayong	66-3865-0515	66-3895-6468	Ordinary shares	59	590	68	68
116 SCGT Automobile Co., Ltd.	Dealer	Bangkok	66-2586-1402	66-2586-2203	Ordinary shares	15	146	67	67
117 Prime Hoa Cuong Joint Stock Company	Holding Company	Vietnam	(84) 211-3711-263	(84) 211-3721-786	Ordinary shares	12	168	65	65
118 Prime Industrial Joint Stock Company	Industrial Park Development	Vietnam	(84) 211-3888-987	(84) 211-3888-986	Ordinary shares	0.1	1	65	65
119 Prime Vinh Phuc Joint Stock Company	Floor and wall ceramic tiles	Vietnam	(84) 211-3866-637	(84) 211-3887-347	Ordinary shares	25	350	65	65
120 Guangxi SCG Logistics Co., Ltd.	Logistics service	China	66-2586-1590	-	Ordinary shares	-	34	55	55
121 Panel World Co., Ltd.	Cement-bonded particleboard	Samutsakorn	66-3447-2033-4	66-3447-1404	Ordinary shares	2	245	55	55
122 Sosuco Ceramic Co., Ltd.	Floor and wall ceramic tiles	Saraburi	66-3637-6300	66-3637-6309	Ordinary shares	0.008	800	54	54
123 SCG-Sekisui Sales Co., Ltd.	Construction & Sales of modular houses manufactured	Bangkok	66-2586-1323	66-2586-1481	Ordinary shares	8	825	51	51
124 MINGALAR MOTOR CO., LTD.	Dealer	Myanmar	(951) 514-940	-	Ordinary shares	0.006	141	50	50
125 PT Siam-Indo Gypsum Industry	Gypsum boards	Indonesia	(6221) 8832-0028	(6221) 8832-0036	Ordinary shares	0.03	306	50	50
126 PT Siam-Indo Concrete Products	Natural-fibre roofing sheets	Indonesia	(6226) 743-2140	(6225) 743-2149	Ordinary shares	0.03	446	50	50

* Directly and indirectly holding through the Company, subsidiaries, associates, jointly-controlled entity and other companies.



Name	Principal Business / Products	Location (Head Office / Factory)	Telephone	Facsimile	Type of shares	Number of paid-up shares (Million shares)	Issued and paid-up shares (Million Baht)	Direct / Indirect Company and Subsidiaries Holding (Percent)	Total Direct / Indirect Holding * (Percent)
127 SCG Trading Emirates L.L.C.	International trading	United Arab Emirates	(9714) 321-7663	(9714) 321-7669	Ordinary shares	0.0003	3	49	49
128 Kampot Land Co., Ltd.	Land investment	Cambodia	(85523) 996-839	(85523) 996-849	Ordinary shares	0.001	0.2	48	48
129 Prime Dai Quang Joint Stock Company	Packaging	Vietnam	(84) 510-2471-993	(84) 510-3761-444	Ordinary shares	2	28	48	48
130 Prime Hao Phu Joint Stock Company	Exploration and processing material	Vietnam	(84) 27-3821-118	(84) 27-3821-118	Ordinary shares	3	35	43	43
Associates, Jointly-controlled entity and Other Companies									
131 CMPI Land, Inc.	Land rental	Philippines	(632) 908-3720	(632) 750 6650	Ordinary shares Preferred shares	100 100	97	64	64
132 SCG Nichirei Logistics Co., Ltd.	Cold Chain	Bangkok	66-2586-6610	66-2586-3136	Ordinary shares	6	570	51	51
133 Thai Prosperity Terminal Co., Ltd.	Shipping port	Samut Prakarn	66-2754-4501-9	66-2754-4513	Ordinary shares	1	63	50	50
134 Lao Premium Roof Tiles Co., Ltd. (Formerly : CPAC Monier (Laos) Co., Ltd.)	Concrete roof tiles	Laos	(85621) 243-440	(85621) 242-179	Ordinary shares	0.2	21	50	50
135 Sekisui-SCG Industry Co., Ltd.	Manufacture and distribute of home components	Saraburi	66-3637-3478	66-3637-3480	Ordinary shares	23	2,325	49	49
136 Survey Marine Services Co., Ltd.	Land rental	Bangkok	66-2296-1490-2	66-2296-1494	Ordinary shares	0.4	37	48	48
137 Jumbo Barges and Tugs Co., Ltd.	Transportation by lighter	Bangkok	66-2872-3014-5	66-2872-3016	Ordinary shares	5	457	45	45
138 Noritake SCG Plaster Co., Ltd.	Manufacture and distribute plaster	Saraburi	66-3637-3578-82	66-3637-3577	Ordinary shares	4	405	40	40
139 Mariwasa Holdings, Inc.	Holding company	Philippines	(632) 717-6901	(6343) 778-2934	Ordinary shares	248	235	40	40
140 Green Siam Resources Corporation	Bailing business	Philippines	(632) 501-8631	(632) 501-8631	Ordinary shares	13	95	40	40
141 CMPI Holdings, Inc.	Holding company	Philippines	(632) 813-1666	(632) 813-1704	Ordinary shares	48	55	40	40
142 Maker - Manifatture Ceramiche S.r.l.	Ceramic tiles	Italy	(39) 0536-840218	(39) 0536-840879	**	-	803	33	33
143 Siam Global House Public Company Limited	Building materials and home improvement products distribution	Roi Et	66-4351-9597	66-4351-1492	Ordinary shares	3,049	3,049	30	30
144 Anhui Conch-SCG Refractory Co., Ltd.	Refractory	China	(86) 553-839-9857	(86) 553-839-9877	**	-	497	30	30
145 The Siam Gypsum Industry Co., Ltd.	Gypsum boards	Bangkok	66-2555-0055	66-2555-0001	Ordinary shares	2	150	29	29
146 The Siam Gypsum Industry (Saraburi) Co., Ltd.	Gypsum boards	Saraburi	66-3637-3500-9	66-3637-3510	Ordinary shares	5	470	-	29
147 The Siam Gypsum Industry (Songkhla) Co., Ltd.	Gypsum boards	Songkhla	66-7420-6000-5	66-7420-6006	Ordinary shares	1	120	-	29
148 PT M Class Industry	Clay roof tiles	Indonesia	(6202) 6743-6888	(6221) 539-7094	Ordinary shares	34	222	28	28
149 Pacific Asian Logistic Joint Stock Company	Logistic	Vietnam	(84) 43-7738-420	(84) 43-7738-421	Ordinary shares	2	28	21	21
150 Asia Cement Public Company Limited	Cement	Bangkok	66-2641-5600	-	Ordinary shares	778	4,671	10	10
151 Holcim Cement (Bangladesh) Limited	Cement	Bangladesh	(8802) 988-1002-3	-	Ordinary shares	0.1	4	10	10

* Directly and indirectly holding through the Company, subsidiaries, associates, jointly-controlled entity and other companies.

** No issuance of share for the Limited Liability Company incorporated in Italy and China.

The capital contribution is as stipulated in the investment certificate of the invested company.



Part 1 Business Operation / 1. Business Policies and Operation

The Siam Cement Public Company Limited

Name	Principal Business / Products	Location (Head Office / Factory)	Telephone	Facsimile	Type of shares	Number of paid-up shares (Million shares)	Issued and paid-up shares (Million Baht)	Direct / Indirect Company and Subsidiaries Holding (Percent)	Total Direct / Indirect Holding * (Percent)
SCG Chemicals									
Subsidiaries									
152	SCG Chemicals Co., Ltd.	Holding company	Bangkok	66-2586-4762	66-2586-5561	Ordinary shares	344	32,277	100
153	Thai Polyethylene Co., Ltd.	Polyethylene and polypropylene	Rayong	66-3868-3393-7	66-3868-3398	Ordinary shares	52	5,190	100
154	SCG Plastics Co., Ltd.	Trading	Bangkok	66-2586-6161	66-2910-4022	Ordinary shares	0.1	5	100
155	SCG Performance Chemicals Co., Ltd.	Trading	Bangkok	66-2586-4115	66-2586-3676	Ordinary shares	0.05	3	100
156	Rayong Engineering & Plant Service Co., Ltd.	Engineering and plant service	Rayong	66-3868-5040-8	66-3891-1309	Ordinary shares	0.04	2	100
157	Protech Outsourcing Co., Ltd.	Engineering and plant service	Rayong	66-3868-2632-3	66-3868-2633	Ordinary shares	0.01	1	100
158	RIL 1996 Co., Ltd.	Industrial estate	Rayong	66-3868-9471-2	66-3891-1955	Ordinary shares	11	1,100	100
159	Texplora Co., Ltd.	Chemical technology licensing	Rayong	66-2586-6353	66-2586-2086	Ordinary shares	0.01	1	100
160	Vina SCG Chemicals Co., Ltd.	Holding company	Bangkok	66-2586-5435	-	Ordinary shares	33	1,369	100
161	SCG Chemicals (Singapore) Pte. Ltd.	Holding company	Singapore	(65) 6297-9661	-	Ordinary shares	38	804	100
162	Tuban Petrochemicals Pte. Ltd.	Holding company	Singapore	(65) 6297-9661	-	Ordinary shares	112	2,349	100
163	Hexagon International, Inc.	Holding company	USA	66-2586-4444	-	Ordinary shares	2	67	100
164	C4 Holding Pte. Ltd.	Holding company	Singapore	66-2586-1972	-	Ordinary shares	7	185	100
165	PT TPC Indo Plastic & Chemicals	PVC	Indonesia	(6231) 395-2945	(6231) 395-2944	Ordinary shares	0.03	1,020	96
166	Rayong Pipeline Co., Ltd.	Rights of pipe rack use	Rayong	66-3893-7065	66-3803-5381	Ordinary shares	4	200	92
167	Thai Plastic and Chemicals Public Company Limited	PVC	Bangkok	66-2827-7272	66-2827-7273	Ordinary shares	875	875	91
168	TPC Paste Resin Co., Ltd.	PVC paste resins	Bangkok	66-2827-7272	66-2827-7273	Ordinary shares	3	333	91
169	The Nawaplastic Industries (Saraburi) Co., Ltd.	PVC pipe and fittings	Bangkok	66-2586-3930-5	66-2586-4305	Ordinary shares	4	400	91
170	Nawa Plastic Industries Co., Ltd.	PVC pipe and PVC products	Bangkok	66-2586-3930-5	66-2586-2444	Ordinary shares	4	426	91
171	Nawa Intertech Co., Ltd.	Molding products	Rayong	66-3889-2190	66-3889-2244	Ordinary shares	0.4	40	91
172	Chemtech Co., Ltd.	Plastic compound	Vietnam	(84650) 3784-992	(84650) 3784-993	**	-	103	91
173	Total Plant Service Co., Ltd.	Holding company	Rayong	66-3868-7320-3	66-3892-5299	Ordinary shares	12	1,180	91
174	SCG ICO POLYMERS COMPANY LIMITED	Rotomolding compound	Bangkok	66-2586-2006	-	Ordinary shares	1	100	87
175	Map Ta Phut Tank Terminal Co., Ltd.	Tank and terminal service	Rayong	66-3868-9471-2	66-3891-1955	Ordinary shares	7	700	82
176	Minh Thai House Component Co., Ltd.	PVC doors and windows	Vietnam	(848) 3754-2989	(848) 3844-6073	**	-	36	73

* Directly and indirectly holding through the Company, subsidiaries, associates, jointly-controlled entity and other companies.

** No issuance of share for the Limited Liability Company incorporated in Vietnam.

The capital contribution is as stipulated in the investment certificate of the invested company.



Name	Principal Business / Products	Location (Head Office / Factory)	Telephone	Facsimile	Type of shares	Number of paid-up shares (Million shares)	Issued and paid-up shares (Million Baht)	Direct / Indirect Company and Subsidiaries Holding (Percent)	Total Direct / Indirect Holding * (Percent)
177 Map Ta Phut Olefins Co., Ltd.	Raw materials for plastic resins	Rayong	66-3893-7000	66-3891-5310	Ordinary shares	395	39,520	55	67
178 Rayong Olefins Co., Ltd.	Raw materials for plastic resins	Rayong	66-3868-5040-8	66-3868-5036	Ordinary shares	108	10,820	50	67
179 Rayong Olefins (Singapore) Pte. Ltd.	Raw materials procurement	Singapore	(65) 6297-9661	-	Ordinary shares	0.02	0.5	67	67
180 Viet-Thai Plastchem Co., Ltd.	PVC compound	Vietnam	(84650) 3710-993	(84650) 3740-065	**	-	75	66	66
181 Alliance Petrochemical Investment (Singapore) Pte.	Holding company	Singapore	(65) 6221-5318	-	Ordinary shares	46	1,881	65	65
182 TPC Vina Plastic and Chemicals Corporation Ltd.	PVC	Vietnam	(848) 3823-4730	(848) 3823-4725	**	-	1,013	63	63
183 Siam Stabilizers and Chemicals Co., Ltd.	Stabilizer	Rayong	66-3868-3451-3	66-3868-3449	Ordinary shares	190	190	54	54
184 Flowlab & Service Co., Ltd.	Calibration service	Rayong	66-3891-1321-2	66-3891-1381	Ordinary shares	0.02	4	51	51
185 Norner Holding AS	Holding company	Norway	(47) 3557-8000	(47) 3557-8124	Ordinary shares	0.01	3	51	51
186 Norner AS	R&D service	Norway	(47) 3557-8001	(47) 3557-8125	Ordinary shares	0.001	0.1	51	51
187 Norner Research AS	Research Institute	Norway	(47) 3557-8002	(47) 3557-8126	Ordinary shares	0.001	0.1	51	51
188 Norner IP AS	Technology service and licensing	Norway	(47) 3557-8003	(47) 3557-8127	Ordinary shares	0.001	0.1	51	51
189 Norner Verdandi AS	Technology service and licensing	Norway	(47) 3557-8004	(47) 3557-8128	Ordinary shares	0.01	3	51	51
190 CO2 Technologies AS	Holding company	Norway	(47) 3557-8005	(47) 3557-8129	Ordinary shares	0.001	0.5	51	51
Associates, Jointly-controlled entity and Other Companies									
191 SCG Plastics (China) Co., Limited	Trading	Hong Kong	(852) 2544-9991	(852) 2544-9992	Ordinary shares	0.1	4	58	58
192 Siam Mitsui PTA Co., Ltd.	Raw materials for polyester and PET	Rayong	66-3868-5100	66-3868-7333	Ordinary shares	48	4,800	49	50
193 SMH Co., Ltd.	Holding company	Rayong	66-3868-5100	-	Ordinary shares	1	60	50	50
194 Siam Styrene Monomer Co., Ltd.	Raw materials for polystyrene	Rayong	66-3868-3215-6	66-3868-3991	Ordinary shares	48	4,755	50	50
195 Siam Synthetic Latex Co., Ltd.	Synthetic latex	Rayong	66-3868-3215-6	66-3868-3991	Ordinary shares	59	5,789	50	50
196 Siam Polyethylene Co., Ltd.	Polyethylene	Rayong	66-3868-3215-6	66-3868-3991	Ordinary shares	45	4,455	49	50
197 Siam Polystyrene Co., Ltd.	Polystyrene	Rayong	66-3868-3215-6	66-3868-3991	Ordinary shares	10	995	50	50
198 Rayong Terminal Co., Ltd.	Tank and terminal service	Rayong	66-3868-9471-2	66-2586-6220	Ordinary shares	14	1,325	-	50
199 PT Siam Maspion Terminal	Tank and terminal service	Indonesia	(6231) 395-2945-8	-	Ordinary shares	0.01	327	50	50
200 SD Group Service Co., Ltd.	Holding company	Bangkok	66-2365-7000	66-3868-3991	Ordinary shares	0.8	78	50	50
201 Bangkok Synthetics Co., Ltd.	Raw materials for synthetic rubber	Bangkok	66-2679-5120	66-2679-5119	Ordinary shares	12	1,173	49	49
202 Thai MMA Co., Ltd.	Raw materials for acrylic	Rayong	66-3868-5040-8	66-2586-5393	Ordinary shares	56	5,590	46	47
203 Grand Siam Composites Co., Ltd.	Polypropylene compound	Rayong	66-3868-4241	66-3868-4255	Ordinary shares	0.6	64	46	46

* Directly and indirectly holding through the Company, subsidiaries, associates, jointly-controlled entity and other companies.

** No issuance of share for the Limited Liability Company incorporated in Vietnam.

The capital contribution is as stipulated in the investment certificate of the invested company.



Name	Principal Business / Products	Location (Head Office / Factory)	Telephone	Facsimile	Type of shares	Number of paid-up shares (Million shares)	Issued and paid-up shares (Million Baht)	Direct / Indirect Company and Subsidiaries Holding (Percent)	Total Direct / Indirect Holding * (Percent)
204 Thai MFC Co., Ltd.	Melamine compound	Rayong	66-3868-4241	66-3868-4255	Ordinary shares	2	200	45	45
205 Siam Tohcello Co., Ltd.	Raw materials for packaging film	Rayong	66-3801-0500	66-3801-0506	Ordinary shares	0.6	592	45	45
206 Long Son Petrochemicals Co., Ltd.	Raw materials for plastic resins	Vietnam	(848) 3825-7226	(848) 3825-7268	**	-	4,408	44	44
207 Mehr Petrochemical Company (P.J.S.C.)	Polyethylene	Iran	(9821) 8850-0641	(9821) 8805-0642	Ordinary shares	0.03	1,335	39	39
208 PT Trans-Pacific Polyethylene Indonesia	Polyethylene	Indonesia	(6221) 574-5880	-	Ordinary shares	0.2	472	39	39
209 PT Trans-Pacific Polyethylindo	Polyethylene	Indonesia	(6221) 574-5880	-	Ordinary shares	0.07	337	39	39
210 Nawacam Co., Ltd.	PVC pipe and fittings	Cambodia	(85523) 882-072	(85523) 885-172	Ordinary shares	0.02	7	36	36
211 Riken (Thailand) Co., Ltd.	PVC compound	Bangkok	66-2501-1054	66-2501-1198	Ordinary shares	1	120	32	32
212 PT Chandra Asri Petrochemical Tbk.	Raw materials for plastic resins	Indonesia	(6221) 530-7950	(6221) 530-8930	Ordinary shares	3,287	14,679	31	31
213 GTC Technology US, LLC	Chemical technology licensing	USA	66-2586-4444	-	Ordinary shares	0.2	102	25	25
214 GTC Technology International, LP	Chemical technology licensing	USA	66-2586-4444	-	Ordinary shares	13	191	25	25
215 Tien Phong Plastics Joint Stock Company	PVC pipe	Vietnam	(843) 1385-2073	(843) 1364-0133	Ordinary shares	56	845	22	22
216 PT Trans-Pacific Petrochemical Indotama	Raw materials for aromatics	Indonesia	(6221) 574-5880	-	Ordinary shares	15	15,944	5	5
217 Thai PET Resin Co., Ltd.	PET resins	Rayong	66-3868-5900	66-3868-5999-609	Ordinary shares	9	900	20	20
218 Mitsui Advanced Composites (Zhongshan) Co., Ltd.	Polypropylene compound	China	(86) 760-533-2138	(86) 760-389-8880	Ordinary shares	15	596	20	20
219 Binh Minh Plastics Joint Stock Company	PVC pipe	Vietnam	(848) 3969-0973	(848) 3960-6814	Ordinary shares	45	682	19	19
220 PT Srithai Maspion Indonesia	Melamine compound	Indonesia	(6231) 891-3630	-	Ordinary shares	0.01	118	10	10
221 PT Trans-Pacific Polypropylene Indonesia	Polypropylene	Indonesia	(6221) 574-5880	-	Ordinary shares	0.07	220	10	10
222 PT Trans-Pacific Styrene Indonesia	Raw materials for polystyrene	Indonesia	(6221) 574-5880	-	Ordinary shares	0.1	314	10	10
SCG Paper Subsidiaries									
223 SCG Paper Public Company Limited	Holding company	Bangkok	66-2586-3333	66-2586-2164	Ordinary shares	156	1,563	98	98
224 Siam Kraft Industry Co., Ltd.	Kraft paper	Bangkok	66-2586-3333	66-2586-2164	Ordinary shares	35	3,450	98	98
225 United Pulp & Paper Co., Inc.	Kraft paper	Philippines	(632) 870-0100	(632) 870-0409	Preferred shares	840	4,328	98	98
					Ordinary shares	141			
226 Paperlink Inter-Trade Corporation	Kraft paper	Philippines	(632) 870-0100	(632) 870-0409	Ordinary shares	0.1	1	98	98
227 InfoZafe Co., Ltd.	Shredding business	Bangkok	66-2586-3333	66-2586-2164	Ordinary shares	1	70	98	98
228 SCGP Excellence Training Center Co., Ltd.	Training and Seminar	Bangkok	66-2586-3876	66-2586-4507	Ordinary shares	1	49	98	98
229 SCG Paper Energy Co., Ltd.	Energy	Bangkok	66-2586-3333	66-2586-2164	Ordinary shares	0.01	1	98	98

* Directly and indirectly holding through the Company, subsidiaries, associates, jointly-controlled entity and other companies.

** No issuance of share for the Limited Liability Company incorporated in Vietnam.

The capital contribution is as stipulated in the investment certificate of the invested company.



Name	Principal Business / Products	Location (Head Office / Factory)	Telephone	Facsimile	Type of shares	Number of paid-up shares (Million shares)	Issued and paid-up shares (Million Baht)	Direct / Indirect Company and Subsidiaries Holding (Percent)	Total Direct / Indirect Holding * (Percent)
230 Thai Cane Paper Public Company Limited	Kraft paper	Bangkok	66-2440-0707	66-2440-0717	Ordinary shares	358	3,583	92	92
231 Thai Paper Co., Ltd.	Printing and writing paper	Bangkok	66-2586-3333	66-2586-2164	Ordinary shares	17	1,700	75	75
232 Thai Union Paper Public Company Limited	Printing and writing paper	Samut Prakarn	66-2754-2100-10	66-2754-2118	Ordinary shares	43	430	75	75
233 Siam Cellulose Co., Ltd.	Bleached pulp	Bangkok	66-2586-3333	66-2586-2164	Ordinary shares	41	4,070	75	75
234 The Siam Forestry Co., Ltd.	Forestry	Bangkok	66-2586-3333	66-2586-2164	Ordinary shares	2	184	75	75
235 Panas Nimit Co., Ltd.	Forestry	Bangkok	66-2586-3333	66-2586-2164	Ordinary shares	0.02	2	75	75
236 Thai Panason Co., Ltd.	Forestry	Bangkok	66-2586-3333	66-2586-2164	Ordinary shares	0.02	2	75	75
237 Thai Panadorn Co., Ltd.	Forestry	Bangkok	66-2586-3333	66-2586-2164	Ordinary shares	0.02	2	75	75
238 Thai Panaram Co., Ltd.	Forestry	Bangkok	66-2586-3333	66-2586-2164	Ordinary shares	0.02	2	75	75
239 Suanpa Rungsaris Co., Ltd.	Forestry	Bangkok	66-2586-3333	66-2586-2164	Ordinary shares	0.02	2	75	75
240 Siam Panawes Co., Ltd.	Forestry	Bangkok	66-2586-3333	66-2586-2164	Ordinary shares	0.03	3	75	75
241 Thai Panaboon Co., Ltd.	Forestry	Bangkok	66-2586-3333	66-2586-2164	Ordinary shares	0.03	3	75	75
242 Thai Wanabhum Co., Ltd.	Forestry	Bangkok	66-2586-3333	66-2586-2164	Ordinary shares	0.03	3	75	75
243 Phoenix Pulp & Paper Public Company Limited	Bleached pulp	Khonkaen	66-2586-3333	66-2586-2164	Ordinary shares	211	2,206	75	75
	Printing and writing paper				Preferred shares	10			
244 Phoenix Utilities Co., Ltd.	Utilities	Khonkaen	66-2586-3333	66-2586-2164	Ordinary shares	15	1,500	75	75
245 Thai Containers Group Co., Ltd.	Corrugated boxes	Bangkok / Pathumthani	66-2586-5991	66-2586-4723	Ordinary shares	14	1,384	69	69
		/ Samut Prakarn / Ratchaburi							
246 Thai Containers Khonkaen Co., Ltd.	Corrugated boxes	Khonkaen	66-2586-3333	66-2586-2164	Ordinary shares	0.2	150	69	69
247 Thai Containers Rayong Co., Ltd.	Corrugated boxes	Rayong	66-2586-3333	66-2586-2164	Ordinary shares	1	650	69	69
248 Vina Kraft Paper Co., Ltd.	Kraft paper	Vietnam	(848) 268-0240-2	(848) 268-0239	**	-	6,069	69	69
249 TCG Rengo (S) Limited	Corrugated boxes	Singapore	(65) 6661-7325	(65) 6265-3144	Ordinary shares	2	56	69	69
250 New Asia Industries Co., Ltd.	Corrugated boxes	Vietnam	(848) 3729-4160	(848) 3729-3028	**	-	345	69	69
251 Alcamax Packaging (Vietnam) Co., Ltd.	Corrugated boxes	Vietnam	(84) 650-3743031	(84) 650-782816	**	-	607	69	69
252 AP Packaging (Hanoi) Co., Ltd.	Corrugated boxes	Vietnam	(84) 320-3753862	(84) 320-752868	**	-	248	69	69
253 Packamex (Vietnam) Co., Ltd.	Flexible Packaging	Vietnam	(848) 729-1030	(848) 729-1031	**	-	220	69	69
254 TC Flexible Packaging Co., Ltd.	Holding company	Bangkok	66-2586-5991	66-2586-4723	Ordinary shares	3	340	69	69
255 PT Primacorr Mandiri	Corrugated boxes	Indonesia	(6221) 596-2345	(6221) 596-2000	Ordinary shares	0.1	294	62	62
256 PT Indoris Printingdo	Corrugated boxes	Indonesia	(6221) 596-0772-3	(6221) 596-0774 (6221) 596-3076	Ordinary shares	0.02	55	62	62

* Directly and indirectly holding through the Company, subsidiaries, associates, jointly-controlled entity and other companies.

** No issuance of share for the Limited Liability Company incorporated in Vietnam.

The capital contribution is as stipulated in the investment certificate of the invested company.



Name	Principal Business / Products	Location (Head Office / Factory)	Telephone	Facsimile	Type of shares	Number of paid-up shares (Million shares)	Issued and paid-up shares (Million Baht)	Direct / Indirect Company and Subsidiaries Holding (Percent)	Total Direct / Indirect Holding * (Percent)
257 Dyna Packs Co., Ltd.	Corrugated boxes	Samutsakorn	66-2810-9346-7	66-2810-9103	Ordinary shares	1	90	52	52
258 Orient Containers Co., Ltd.	Corrugated boxes	Samutsakorn	66-3488-3422-4	66-3488-3421	Ordinary shares	26	260	52	52
259 D-In-Pack Company Limited	Corrugated boxes	Nakhonpathom	66-3498-1401-4	66-3498-1406-7	Ordinary shares	0.005	50	52	52
260 Tawana Container Co., Ltd.	Corrugated boxes	Samut Prakarn	66-2324-0781	66-2324-0079	Ordinary shares	3	300	50	50
261 Thai British Security Printing Public Company Limited	Securities document	Samut Prakarn	66-2754-2650-8	66-2384-0917	Ordinary shares	11	110	49	49
262 Thai British DPost Co., Ltd.	Digital printing	Samut Prakarn	66-2661-5215	66-2661-9580	Ordinary shares	3	34	25	25
Associates and Other Companies									
263 Siam Toppan Packaging Co., Ltd.	Offset-printed cartons	Samut Prakarn	66-2709-3110-7	66-2324-0336	Ordinary shares	5	500	48	48
264 P&S Holdings Corporation	Holding company	Philippines	(632) 870-0100	(632) 870-0409	Ordinary shares	28	263	39	39
265 Siam Nippon Industry Paper Co., Ltd.	Specialty paper	Bangkok	66-2586-3333	66-2586-2164	Ordinary shares	11	1,100	34	34
266 Rengo Packaging Malaysia Sdn. Bhd. (Formerly : TCG Rengo Subang (M) Sdn. Bhd.)	Corrugated boxes	Malaysia	(603) 5636-3610	(603) 5636-3621	Ordinary shares	15	804	17	17
267 Prepack Thailand Co., Ltd.	Flexible Packaging	Samutsongkram Rayong	66-3475-1186-7 66-3891-7004	66-3475-2634	Ordinary shares Preferred shares	3 1	367	15	15
Other Subsidiaries									
268 Cementhai Holding Co., Ltd.	Holding company	Bangkok	66-2586-2104	66-2586-2008	Ordinary shares	0.01	1	100	100
269 Cementhai Property (2001) Public Company Limited	Holding company	Bangkok	66-2586-2104	66-2586-2008	Ordinary shares	7	72	100	100
270 Property Value Plus Co., Ltd.	Land business and land lease service	Bangkok	66-2586-2104	66-2586-2008	Ordinary shares	8	820	100	100
271 SCG Accounting Services Co., Ltd.	Accounting, financial and tax services	Bangkok	66-2586-3333	66-2586-2398	Ordinary shares	0.5	5	100	100
272 SCG Legal Counsel Limited	Legal consultant	Bangkok	66-2586-5777	66-2586-2976	Ordinary shares	0.2	15	100	100
273 CTO Management Co., Ltd.	Marketable securities investment	Bangkok	66-2586-3333	66-2587-2157	Ordinary shares	25	380	100	100
274 Cementhai Captive Insurance Pte. Ltd.	Insurance	Singapore	66-2586-3333	66-2587-2157	Ordinary shares	1	34	100	100
275 Siam Eco Energy Business Co., Ltd.	Holding company	Bangkok	66-2586-3333	66-2587-2157	Ordinary shares	0.5	13	100	100
276 SCG Learning Excellence Co., Ltd	Training service	Bangkok	66-2586-3333	66-2586-2684	Ordinary shares	0.2	20	100	100
277 SCG VIETNAM CO., LTD.	Management consulting service	Vietnam	(848) 3526-9011-13	(848) 3526-9014	**	-	16	100	100
278 PT SCG Indonesia	Management consulting service	Indonesia	(6221) 350-9491	(6221) 352-0718	Ordinary shares	0.1	26	100	100
279 Siam GNE Solar Energy Co., Ltd	Electricity	Bangkok	66-2586-5684	66-2586-6284	Ordinary shares	0.2	16	50	50

* Directly and indirectly holding through the Company, subsidiaries, associates, jointly-controlled entity and other companies.

** No issuance of share for the Limited Liability Company incorporated in Vietnam.

The capital contribution is as stipulated in the investment certificate of the invested company.



Name	Principal Business / Products	Location (Head Office / Factory)	Telephone	Facsimile	Type of shares	Number of paid-up shares (Million shares)	Issued and paid-up shares (Million Baht)	Direct / Indirect Company and Subsidiaries Holding (Percent)	Total Direct / Indirect Holding * (Percent)
Associates and Other Companies									
280 Siam Kubota Corporation Co., Ltd.	Agricultural machinery	Pathumthani	66-2909-0300-1	66-2909-1698	Ordinary shares	31	2,739	40	40
281 Siam Kubota Metal Technology Co., Ltd.	Cast iron	Chachoengsao	66-3885-5115	66-3885-5110	Ordinary shares	9	900	-	40
282 Siam Kubota Leasing Co., Ltd.	Leasing	Pathumthani	66-2909-0300	66-2909-1697	Ordinary shares	80	2,000	-	40
283 Siam Lemmerz Co., Ltd.	Aluminium alloy wheels	Saraburi	66-3637-3309-21	66-3637-3312-3	Ordinary shares	0.1	126	30	30
284 Siam AT Industry Co., Ltd.	Automotive parts	Chonburi	66-3845-4266-8	66-3845-4266	Ordinary shares	2	240	30	30
285 Thai Engineering Products Co., Ltd.	Automotive parts	Pathumthani	66-2529-3518-22	66-2529-1677	Ordinary shares	0.9	85	29	30
286 The Nawaloha Industry Co., Ltd.	Cast iron	Saraburi	66-3633-6531-4	66-3622-3209	Ordinary shares	3	300	30	30
287 Aisin Takaoka Foundry Bangpakong Co., Ltd.	Cast iron	Chonburi	66-3845-4671-7	66-3845-4670	Ordinary shares	5	475	30	30
288 Muang Thong United Co., Ltd.	Football team	Bangkok	66-2508-8100	66-2508-3369	Ordinary shares	1	120	30	30
289 The Siam Nawaloha Foundry Co., Ltd.	Cast iron	Saraburi	66-3628-8300	66-3628-8309	Ordinary shares	3	308	20	25
290 Musashi Auto Parts Co., Ltd.	Motorcycle transmission parts	Pathumthani	66-2529-1753-6	66-2529-4554	Ordinary shares	0.2	200	21	21
291 Lysando AG	Research and development	Liechtenstein	66-2586-2104	66-2586-2008	Ordinary shares	1	39	20	20
292 IT One Co., Ltd.	Technical services	Bangkok	66-2271-5111	66-2271-5112	Ordinary shares	0.8	80	20	20
293 Toyota Motor Thailand Co., Ltd.	Automotives	Samut Prakarn	66-2386-1000	66-2386-1883	Ordinary shares	8	7,520	10	10
294 Siam Yamato Steel Co., Ltd.	Structural steel	Rayong	66-3868-3723-30	66-3868-3200	Ordinary shares	30	3,000	10	10
295 Michelin Siam Group Co., Ltd.	Holding company in tyre business	Bangkok	66-2619-3000-19	66-2619-3179	Ordinary shares	24	2,667	10	10
					Preferred shares	3			
296 Michelin Siam Co., Ltd.	Holding company in tyre business	Bangkok	66-2619-3000-19	66-2619-3179	Ordinary shares	38	2,197	-	10
297 Siam Toyota Manufacturing Co., Ltd.	Automotive engines and automotive parts	Chonburi	66-3821-3451-5	66-3874-3310	Ordinary shares	29	2,850	4	4

* Directly and indirectly holding through the Company, subsidiaries, associates, jointly-controlled entity and other companies.

2. Operation of Key Business Units

Revenue Structure for Year 2014

					(in Million Baht)
	Revenue from sales	Other Income	Total Revenue	Sale breakdown (%)	Equity in Associates *
SCG Cement-Building Materials	185,423	1,808	187,231	35.43	539
SCG Chemicals	248,118	2,127	250,245	50.30	2,795
SCG Paper	64,614	493	65,107	13.09	(66)
Other	86	5,783	5,869	1.18	2,848
Total Consolidated	487,545	9,924	497,469	100.00	6,108

Remark: Financial figures are classified according to business unit before intersegment elimination, as disclosed in note 24 to the financial statements pages 190-194 of the Annual Report 2014.

*share of profit of associates and jointly-controlled entities recognize by using equity method.

SCG Cement-Building Materials

SCG Cement-Building Materials Co., Ltd, (SCG CBM) business consists of cement, building materials, and distribution, focuses on developing High Value Added Products & Services (HVA) and aims to be the market leader in both domestics and ASEAN. The main products in the company are cement product group, building material product group, and ceramic product group.

Key Information			
Capacity	● Grey Cement (Thailand)	23	million tons per year
	● Grey Cement (Outside Thailand)	1	million tons per year
	● Ready-Mixed Concrete	601	plants
	● Roof products	98	million Sq. M. per year
	● Ceiling/Board/Wood substitutions	113	million Sq. M. per year
	● Floor and Wall Ceramic tile	225	million Sq. M. per year
Brand	● Cement: Tra Chang, Elephant, Tiger, SCG and K-Cement Brands		
	● White Cement: Tiger and SCG Brands		
	● Ready-Mixed Concrete: CPAC, Jayamix and SCG Brands		
	● Fireclay Bricks and Special Refractory: SRIC Brand		
	● Aerated Lightweight Concrete: Q-CON and SCG Brands		

Key Information	
	<ul style="list-style-type: none"> ● Roofing products: Elephant and SCG Brands ● Ceiling/Board/Wood substitutions: Elephant and SCG Brands ● Concrete blocks, concrete floor tiles, and precast concrete walls: Elephant Brand ● Ceramic floor and wall tiles: COTTO, SGI Tiles, SOSUCO, CAMPANA, Prime, KIA, and Mariwasa Brands ● Sanitary, Bath Room, and Kitchen: COTTO Brand ● Building Material Outlet: SCG HOME SOLUTION and HOME MART ● Product Outlet and Solution Center for Ceramic floor, Wall tiles, Sanitary, Bath Room, and Kitchen - COTTO Brand: COTTO Studio ● Flagship Retail Store for SCG: SCG Experience ● Transportation Service: SCG Logistics ● Import/Export Service : SCG Trading
Strengths	<ul style="list-style-type: none"> ● Major integrated producer of cement and building material products in ASEAN ● The largest production capacity in floor/wall ceramic tiles in the world ● Embedded sustainable development philosophy as part of company policy and operations ● Rigorous in-house R&D efforts to create innovative products and services
Major Business Policy	<ul style="list-style-type: none"> ● Expand business in ASEAN in order to be a regional leader ● Maintain price and market stability as well as enhance its domestic market leadership ● Develop high value products and services (HVA) ● Continuously conserve natural resources and environment and join social development program with local community for sustainable development

2.1 Product or Service Features

Products and services are primarily classified by companies as follows:

Cement Group

1. Grey Cement
2. White Cement

3. Mortar Cement
4. Ready Mixed-Concrete
5. Fireclay Bricks and Special Refractory
6. Aerated Lightweight Concretes (ALC)

Building Material Group

7. Roof Tile (Fiber Cement Roof, Concrete Roof, Ceramic Roof, Metal Roof, Clay Roof, and Glasolit Roof)
8. Ceiling/Board/Wood Substitute

Ceramic Group

9. Floor and Wall Tiles

Other Products and Services

10. Logistic Service
11. Import/Export Service
12. Disposal of Industrial Waste
13. Other Products and Services such as Insulation, Roofing Center, and Home Product and Service

2.2 Market and Competition

A. Policy and Market Features of Main Products and Services

- Policy and Market Features

1) Competitive Strategy

- The business rigorously creates value to customers through high value added products and services (HVA) to create differentiation and response to customer needs such as continuing improvement, becoming trend settler, and developing eco-friendly products to reduce natural resource consumption. In addition, SCG Cement is the only Thai cement company that has its own Research and Development unit that allows SCG Cement to efficiently develop its goods and services to serve the needs of each customer segment such as Elephant Hybrid Cement (Eco-friendly), Special Tiger Cement, Tiger Super Cement, Elephant Transformer Cement, Elephant Marine Cement, Portland Composite Cement, Tiger Crack Resistant Mortar Cement, SmartWood Modeena serie, Curvlon Roof, Ceramic Tile, COTTO Digital, The Convenic Toilet Seat and Cover, and Wash basin Palizza serie.
- The business has policy to continuously increase production efficiency and implement cost reduction, for example, energy cost reduction, raw material consumption reduction, and waste reduction. Furthermore, SCG CBM also has its own technical teams to provide

customers professional advice and recommendation about production process, quality control, and cost reduction as well as suggest possible solution of any related problems. Therefore, customers can promptly and directly notify their problems to the Customer Complaint Call Center.

- The business gives priority to social and environment by providing many marketing and social activities such as “Tiger Professional Community”, education activity to improve skills and enhance living standard of local contractors and “Project to Educate Architecture Students”, education activity for increase knowledge about building materials and construction technology.

2) Customer Features and Target Groups

- Cement Product: cement is sold to affiliate companies such as ready mixed concrete, concrete roof, board, etc. Besides SCG customers, cement is sold to dealers, major concrete building material producer, and major contractors.
- Building Material Products: target groups are classified by price, and group of customers to match with product categories, designs, and customer behavior in each area.
- Ceramic products can be classified into two customer segments: medium-to-low and medium-to-high segments.

3) Channel of Distribution

- Domestic Distribution: the business provides strong domestic distribution network through 500 dealers nationwide through sales campaign and activities. In project segment, the business has enhanced customer's efficiency of product utilization with project management system “One Stop Solution”. The segment that needs consulting, designing, price estimation, and service installation, is served by the One-Stop Shop and One-Stop Service dealer called SCG Home Solution and COTTO Studio.
- Regional Distribution: SCG Trading, SCG's subsidiary, is the SCG exporting agent to other countries. The export will focus on needs of destination customer or dealer in each country. For strategic countries, for example Indonesia, PT KOKOH Inti Arebama Tbk, SCG subsidiary, manages distribution network with more than 2,700 dealers throughout Indonesia.
- Distribution in other regions, SCG Trading, SCG's subsidiary, is the SCG exporting agent to other countries. The export will focus on needs of destination customer or dealer in each country.

In addition, SCG CBM focuses on increasing efficiency of SCG Dealers as follow:

- Wholesales channel: The business increases dealers' capabilities through Loyalty program "Chang Family" by supporting and co-implementing system of cost reduction, warehouse and logistics management.
- Project channel: the business strengthens project channel through advance information technology (IT) and supply chain management to connect all operation and serve customer needs.
- Retail Channel: The business develops network sustainably through SCG Home solution in order to response home owner's requirements such as designing, price estimation, material selection, service installation, and guarantee. The business also expands network through Loyalty program, educate installers to improve their professional skills and through SCG contact center to provide solution and consultation directly to home owners.

- **Policy and Market Features of Main Products and Services**

Presently, the business has five grey cement plants in Thailand: 1) Ta Luang Cement Plant (Saraburi), 2) Khao Wong Cement Plant (Saraburi), 3) Kaeng Khoi Cement Plant (Saraburi), 4) Thung Song Cement Plant (Nakorn Sri Thammarat), 5) Lampang Cement Plant (Lampang) with the production capacity 23.2 million tons with the highest market share compared to other domestic cement producers. For building materials, the business has factories, producing roof, ceiling, and board, in Saraburi, Nakhon Prathom, Lampang, Lamphun, Chonburi, Khonkaen, Nakhon Ratchasima, and Nakhon Si Thammarat.

Recently, SCG CBM rigorously expands marketing activities of cement and building materials products in 5 countries in ASEAN: Indonesia, Myanmar, Cambodia, Vietnam, and Philippines by focusing on strengthening distribution channels. Also, there has further expanded cement production capacity through simultaneously setting up new plants in Cambodia, Indonesia, Laos, and Myanmar.

For Ceramic business, there is Floor and wall tiles plant in domestic and regional with total capacity of 225 MSq.m. per year : 1) Saraburi, Thailand 2) Philippine 3) Indonesia and 4) Vietnam. Furthermore, the sanitary ware and fitting business is still being leader in domestic market. SCG emphasizes to continuously develop Sanitary ware and fitting business for being well known in global market in the future. The innovative products launched to the market as followings;

In the year 2014, the business has products and innovation in the market as follows:

- 1.) Continue expanding production capacity of Eco-Friendly Hybrid Portland Cement which has well accepted from customers. In 2014, the Elephant hybrid cement is the 1st brand in Thailand which has been certified by Thai Industrial Standards Institute (IS 2594-2556). With the same application as Basic Portland Cement in Concrete work, Elephant Hybrid Cement has the special feature of reducing CO2 emissions in the manufacturing process, a major cause of global warming. Furthermore, it is ideal for structures that demand strength and durability.
- 2.) Continue expanding production capacity to regional areas. The business has set up and operated new plant in Chonburi (East) and has further expanded its production capacity to Northern and North eastern in order to capture rising demand growth. The business also creates competitive advantage over competitors through Silo & Spraying Service System by increasing capacity of Silo and service teams and expands to big cities nationwide in order to provide feature of convenience and solve labour shortage problem.
- 3.) Increase production capacity of Tiger Cement under brand “Tiger Cement Decorative”, which is for floor and wall decorative to serve customers that need unique and outstanding covering cement decorative.
- 4.) Produce special Mortar for Cast in Place. This special Mortar is used for the panel work in high rise building or single house with fast, convenience, and strong benefits.
- 5.) Produce CPAC Super Plus, new ready mixed concrete to serve customers that require better flow ability and do not want to mix more water in the workplace.
- 6.) SmartWood Decorative Wall Panel, Modeena serie is the unique wall panel with dimension surface, applicable both indoor and outdoor decoration. Be easily painted with color before finished with water base acrylic paint. In addition, It can be easily installed with dry process and resistant to water and termite.
- 7.) Fiber cement roof, Curvlon serie is the tile roof with shiny, outstanding colors, aesthetic tiles, and light weight. In addition, it reduces installation time with only 1.95 pieces per sq.m. compared by basic feature (2.2 pieces per sq.m.) with 5 mm thickness and high performance of crack resistance and durability.
- 8.) Increase production of Concrete Roof at Lamphun for profile and flat (prestige) tile. Prestige tile is concrete roof that is designed to fill Thai humid climate. It is painted colour with wet on wet system and used Inorganic pigment that makes color becoming smoothness with the tile and durable.

9.) Continue R&D on Marmo Granito. Marmo Granito is the artificial stone that look beautiful, the same as natural stone, but stronger and more durable which is Unique in the world. The Marmo Granito technology belongs to SCG and was patented internationally.

- **Domestics Market and Competition**

In 2014, demand for cement in Thailand held generally stable while exports to the ASEAN countries increased from the previous year. Demand for building materials in Thailand witnessed some growth slowdown compared to the year before due to the lack of consumer confidence and sagging prices of agricultural commodities. Nevertheless, SCG CBM managed to maintain its leadership status in the building product business through the continued development of high value added products and services to better address customer needs. Demand for building materials in ASEAN saw a steady growth driven by the expansion of the construction sector in the region, especially Myanmar, Vietnam, and Cambodia where the governments promoted scores of large-scale infrastructure projects. Examples included the special economic zone development project in Myanmar, the new airport construction project in Hanoi, Vietnam, the deep sea port construction project in Cambodia, and the construction of roads and rail lines to connect major cities in the region. Meanwhile, construction projects in Indonesia slackened in the third quarter in light of concerns about the Indonesian election results. All in all, the overall market in Indonesia saw a moderate growth due to the construction projects in response to the national development plan.

SCG CBM focuses on maintaining its market leadership, avoiding to compete on price, by creating value to customers by rigorous continuing enhances product quality and new product and service development. And the business sustains leadership by building good relationship with customers as well as implementing cost reduction program in order to be more competitive. In addition, we have also improved and expanded distribution network nationwide to increase points of purchase to facilitate our customers' accessibility to our products.

- **Regional Market and Competition**

Cambodia still shows continuous growth especially from government infrastructure projects such as airport, seaport, and railway, and private sector from China, Japan, Korea, and Thai. This results in increasing demand of cement and building materials. However, the attractive growth also stimulates higher competition in the market.

Myanmar: the construction sector is expected to keep growing from FDI and government spending in basic infrastructure such as special economic zone developments, tollway and seaport. In addition, there is continuous growth from private investment such as residential project, hotel and shopping mall.

Indonesia: Economy was slowing down during the election in mid of 2014. Nevertheless, the construction market shows positive sign which comes from national development plan – MP3EI such as new Tanjung Priok seaport, tollway, and from residential projects around big cities.

2.3 Products and Services Procurement

A) Product Procurement Feature

Type	Number of Sellers	Procurement method	Local / Foreign	Remark
Main Raw Materials				
Limestone	-	-	100% / 0%	Own supply sources and self-operated.
Shale	-	Long-term contracts with external contractors.	100% / 0%	Own supply sources. Long-term contracts with contractors
Sand	~ 3	Occasional purchase with long-term suppliers	100% / 0%	Own supply sources kept as reserve. Currently buy from external sellers
Clay	~ 3	Long-term contracts with external contractors	100% / 0%	Own supply sources. Currently have long-term contracts with contractors and partly buy from external suppliers
Copper Slag	1	3-year contracts with external suppliers	0% / 100%	Buy from external suppliers
Gypsum	~ 6	Long-term contracts with suppliers and partly operate from own sources	100% / 0%	Currently buy from external sellers and partly from own sources
Kraft Paper	4	Yearly contracts with SCG affiliates and international suppliers	30% / 70%	Currently buy international suppliers and partly from domestics suppliers
Fuel				
Lignite	~ 2	Long-term contracts with suppliers	100% / 0%	Self-operate from its supply sources and buy from external suppliers
Petroleum Coke	~ 1	Occasional purchase	0% / 100%	Buy from external suppliers
Coal	~ 5	Long-term contracts with suppliers and occasional purchase	0% / 100%	Buy from external suppliers
Bunker Oil	2	Occasional purchase.	100% / 0%	Buy from external suppliers

Type	Number of Sellers	Procurement method	Local / Foreign	Remark
Biomass e.g. husk, palm shell, saw-dust, etc.	14	Long-term contracts with suppliers and occasional purchase	50% / 50%	Buy from external suppliers

For other materials, the business has long-term contracts with many raw material producers both domestics and international. The company will not depend too much on any single supplier to prevent shortage of raw materials.

B) Environment Protection

SCG Cement-Building Materials has enacted environment policies by applying Sustainable Development in business practices as follows:

- 1.1) The businesses operates under the 'Green Supply Chain' concept in which every associated sector, from the upstream to the downstream, has a good environmental management system. At the same time, we are responsible for stakeholders, especially communities within the vicinity of our plants, in order to promote the quality of life and create a sustainable relationship. Consequently, the Siam Cement (Lampang) Co., Ltd. became Thailand's first industry to be awarded Green Industry Level 5 Certificate, also known as 'Green Network', by Ministry of Industry.
- 1.2) We researched and launched a new product, Tra Chang Hybrid Cement which reduces the emission of greenhouse gas during the production process by at least 70 kilograms CO₂ per a ton cement compared to ordinary structural formula cements. It is also guaranteed SCG eco value.
- 1.3) We are awarded Carbon Footprint for Organization (CFO) for the Siam Cement (Kaeng Khoi) Co., Ltd., Thai Ceramic Co., Ltd., Siam Sanitary Ware Industry Co., Ltd., and Sosuco Ceramic Co., Ltd.
- 1.4) We are awarded Carbon Footprint Label for COTTO Brand's CT2142A model faucet by the Siam Sanitary Fittings Co., Ltd., and SGI Tiles Brand's 8"X10" wall tiles by the Siam Ceramic Group Industries Co., Ltd.
- 1.5) In addition to our Zero Waste to Landfill policy, we collaborate with our customers in a waste management system called 'Lumpsum Project' in which we take roof tile fragments from a customer's construction site to use as an ingredient in the production, thus solving our customers' waste problems and using natural resources more efficiently. The project is operated by the CPAC Roof Tile Co., Ltd., (Nakorn Prathom).

- 1.6) We enhanced the efficiency of energy use and reduced the emission of CO₂ at body preparation process by replacing wet process with dry process (dry grinding) at the Siam Ceramic Group Industries Co., Ltd. thus reducing energy cost by 113,235 Gigajoules per year, equal to a decrease of 6,358 tons CO₂ per year without sacrificing the quality of the tiles.
- 1.7) We established a collaboration network with stakeholders, developing factories that are friendly to communities and environment through our campaigns.
- 1.8) We collaborate with the international organizations such as the World Business Council for Sustainable Development - Cement Sustainability Initiatives (WBCSD CSI).
- 1.9) We enhanced the safety management by implementing a system to control significant risks focusing on preventive effectiveness such as adopting the Behavior Based Safety system to reduce risky behaviors, Management of Change system to reduce risks related to changes in work conditions, Proactive KPI to control the risks. We have implemented in pilot factory to improve safety management by using Safety Performance Assessment Program (SPAP).
- 1.10) We set a standard and promote Safety Good Practices in the safety management for Forklift. In addition, we set a hand tool inspection system, work permit system for high-risk jobs. And we share good practices to all factories in order to integrate and implement in each factory.
- 1.11) We developed a safety system for transportation, focusing on reduction of transportation accidents by using safety program such as Driving safety training (In-Cap Coaching), making the Route Hazard Map which shows risky points as well as resting points on 19 main routes for transportation, equipping GPS control so as to track drivers and designate them to rest at resting point, equipping dashboard cameras to assess drivers' behavior as well as to collect data for training.

2.4 Undelivered Projects or High-Valued Purchase Agreements

None

SCG Chemicals

2.1 Product or Service Features

- **Olefins**

Olefins are the primary petrochemical product comprising of Ethylene and Propylene which are the main raw materials for downstream Polyolefin plastics and related products such as Polyvinyl Chloride and Styrene Monomer. The business's current Olefins capacity is 2,900,000 tons per year. Byproducts from the olefins plant such as Mix-C4, Benzene and Toluene are mainly consumed within the business's and/or SCG subsidiaries' downstream plants.

- **Polyolefins**

Polyolefins are the business's main products. The business has total polyolefins capacity of 1,900,000 tons per year, covering a wide range of applications as follows:

- 1) High Density Polyethylene (HDPE) Outstanding features are good flow-ability, easy formation, and good chemical resistance. It is normally used as the main raw material for the production of plastic shopping bags, milk bottles, shampoo and cosmetics bottles, lubricant containers, bottle crates, fruit crates, trash bins, ropes, fishnets, ring-nets, water pipes, electric power cord insulators, and etc.
- 2) Medium Density Polyethylene (MDPE) Outstanding features are high dart impact strength, stable formation, and low temperature resistance. It is normally used as the main raw material for the production of coolers, water tanks, water treatment tanks, traffic cones, and etc.
- 3) Linear Low Density Polyethylene (LLDPE) Outstanding features are high stiffness and high tensile strength. It is normally used as the main raw material for the production of industrial and agricultural films, plastic rice bags, and etc.
- 4) Low Density Polyethylene (LDPE) Outstanding features are clarity and high stiffness. It is normally used as the main raw material for the production of cold food bags, food preservation films, lids, plastic boxes, surface coatings, and etc.
- 5) Polypropylene (PP) Outstanding features are high dart impact strength and high heat resistance. It is normally used as the main raw material for the production of hot food bags, general wrapping films, woven bags, household utensils, battery shells, electrical appliance parts, car components, and etc.

- **Polyvinyl Chloride (PVC)**

PVC products from Thai Plastics and Chemicals Public Company Limited, the largest PVC producer in Thailand and ASEAN with total production capacity of 886,000 tons per year, can be divided into two main categories:

- 1) PVC Resin - a type of thermoplastic in pure powder form which can withstand heat and pressure without changing its original structure and can be reused in different productions. However, it cannot be directly formed into finished goods, thus needs various additives to adjust its properties according to customers' specifications.
- 2) PVC Compound - normally in pellet or powder which has already been dry-blended with various additives such as additives to increase impact strength, additives to help the forming process, additives to increase heat resistance capability without changing its form, and etc. Due to its many outstanding features such as weather resistance, fire retardant, light weight, and rust-free material, it can be used as insulator, sheath for electrical wire, telephone cable, pipes, and etc.

- **Jetty & Tank Terminal**

The business provides its affiliates with pipe transportation as well as jetty and tank terminal for storage of petrochemical gases and liquids such as Naphtha, Olefins, Benzene, Butadiene, MMA, and etc. At present, the business owns four jetties with a capacity of 100,000, 80,000, 20,000 and 10,000 dead weight tons.

2.2 Market and Competition

A) Policy and Market Features of Main Products and Services

- Policy and Market Features

Polyolefins and PVC are commodity products with a fairly volatile price cycle.

1) Competitive Strategy

- **High Value-Added Products**

The company has planned and developed high value-added products in order to improve product quality and respond to customer needs. In this regard, the business has invested in the enhancement of research and development capability and efficiency. At present, sales of high value-added products accounts for 50% of total sales of downstream products. High value-added products are namely:

- Pipe: PE 100 water pipe, gas pipe
- Rotomolding: "Elixir" water storage, outdoor furniture
- Wire and Cable: sheath for electrical wire, fiber optic cable, telephone cable
- PE Wax: processing aid, dispersant
- Propylene compound and Propylene co-polymer: compounds for medical devices and automotive parts
- PVC: resin and compound for medical application and automotive parts

- Other specialties: construction materials, door and window made from plastic and wood substitution materials or Wood Plastic Composite (WPC)

The business aims to further increase sales portion of high value-added products to reduce impact of business volatility in the down cycle while enhancing overall competitiveness of the business.

- **Price and Cost**

Both domestic and export prices of Polyolefins and PVC resins are closely correlated with the global market prices. The business aims to create a price premium by offering high quality products and differentiated value added services to its customers. The business has adopted Total Quality Management (TQM) concept which emphasizes on customer and quality, and was awarded with the Deming Application Prize. In terms of cost management, the business gives priorities to maintaining competitive cost position. As petrochemical industry requires high investment, the business has to constantly de-bottlenecking the plant capacities to achieve economy of scale with lowest investment cost per ton. In addition, as a fully integrated player, the business also utilizes Total Productivity Management (TPM) concept which emphasizes on equipment maintenance, production efficiency, and cost reduction. By following TPM concept, the business was awarded with Advance Special Award for its achievement in production efficiency enhancement, energy conservation as well as accident and environmental impact reduction, leading to improvement in employee morale and capabilities. The business has also invested in advanced IT and e-Business systems, such as e-Supply Chain, e-Ordering, Advanced Process Control and CRM Portal to achieve best-in-class efficiency and customer satisfaction.

- **Product Quality Management**

One of the business's main policies is to produce high quality products without any effects on the environment and communities. In addition, the business also gives great importance to occupational health and safety management systems, therefore, it integrated ISO system with TQM and TPM to come under one quality management resulted in being certified by the international quality system, namely ISO 9001, ISO 14001, and TIS 18001. In addition, the business also applied for ISO17025 which is related to laboratory management since the business invests in research and development to constantly improve its product quality to promptly meet true customer needs from customers' insight.

- **Service**

The business recognizes that “service is the heart of selling”. Therefore, it has developed Customer Relationship Management system (CRM) by applying IT technology. The said system will gather customer requirements and analyze them in order to accurately and timely respond to customers’ needs, leading to the maximum customer satisfaction. The system is also designed to receive customer complaints to ensure that every problem will be recorded and solved. Moreover, the business provides technical advices on plastics conversions and engages in collaboration with customers to co-create values from development of products and services that better satisfy customers’ latent needs and help them develop sustainable growth. The business also emphasizes on timeliness and accuracy of the delivery which are considered the fundamental of customer services. It engages in continuous improvement and development, including enhancing the service efficiency, in order to raise service standards to match customers’ business operations which vary in different segments with the ultimate goal of maximizing the customers’ satisfaction.

- **Management**

As the business operates in a highly volatile market, its main focus is on improving management practices in order to make accurate and timely decisions to respond to the customers’ needs in various situations. The business enhanced the efficiency of Enterprise Resource Planning (ERP) system by integrating systems of various departments to increase the customer response time. The mentioned system consists of various functions: order forecasts, sales planning, logistics development, production planning, raw material procurement, and inventory management. Moreover, the business invited the consultant whose world-class expertise lies in supply chain management to co-develop the system for the continuous improvement with the emphasis on supply chain visibility and integrated management. In addition, the business also extended the Business Continuity Management system (BCM) to its subsidiaries for ongoing customer responsiveness in case of emergency.

2) Customer Features and Target Groups

Target groups are Polyolefins converters which are classified based on formation types such as film, injection molding, monofilament & yarn, blow molding, and others which are lamination, extrusion, and pipe.

For PVC business, target groups are plastic converters, classified based on product types such as pipe and fitting, calendaring and profile and others.

The business's customers are mostly small and fragmented so the business aims to diversify the customer base into diverse segment and region. Hence, the Company is risk averse as it is not dependent on one customer.

3) Channel of Distribution

In 2014, domestic and export sales of Polyolefins are accounted for 38% and 62% respectively.

- **Domestic**

There are two types of customers of which 93% are domestic customers and 7% are re-exporters. For the former, 61% is through direct sales by the business while the rest (39%) is sold through agents who manage financial risks and distribution of products to Polyolefins converters. For re-exporters customers, goods are sold mostly through direct sales by the business.

- **Export**

The business mainly exports to the Asia-Pacific region. Products are distributed directly to end-users or local distributors so that customer needs are satisfied efficiently. At present, the business has 6 representative companies internationally which are located in Myanmar, Vietnam, Philippines, Indonesia, and China (Shanghai and Guangzhou). The proportion for the export market is 32% in Southeast Asia, 35% in East Asia, 5% in South Asia, and 28% in other regions. As the business internationally exports around 1,120,822 tons per year without concentrating in one particular country, it is able to avoid direct confrontation with multinational players and diversify political or economic risks. In addition, by having global based customers, the business is able to manage export products quantities for profit optimization as prices may differ depending on market conditions of each country.

In 2014, Domestic and export sales of PVC through Thai Plastic and Chemicals Public Company Limited are 61% and 39% respectively.

- **Competition and Capacity**

1) **Domestic**

Thailand has Polyolefins capacity of approximately 5.6 million tons per year while the country's demand in 2014 was approximately 2.7 million tons. Moreover, Thailand export Polyolefins around 52% of total production. However, when comparing with local producers, the business has around 34% of total domestic capacity. Thailand has total PVC production capacity of 874,000 tons per year. Thai Plastic and Chemicals Public Company Limited is the largest producer, accounting for 65% of total domestic capacity.

2) Foreign

In 2014, Polyolefins demand in Asia equaled 70 million tons with China as the largest importer. Major exporters are producers in the Middle East, USA, Korea, and Singapore. For PVC, PVC demand in 2014 was 26 million tons. Demand growth was mainly driven by India which is the largest importer in Asia.

2.3 Products or Services Procurement

A) Product Procurement Feature

- Production

The business has 2 Olefins plants and 9 Polyolefins plants located in Map Ta Phut Industrial Estate, Rayong Province. Nameplate capacities are displayed below:

Company	Product / Service	Capacity (Ton / Year)	Year First Operated	% Shareholding
Rayong Olefins	Ethylene	800,000	1999	67
	Propylene	400,000		
Map Ta Phut Olefins	Ethylene	900,000	2010	67
	Propylene	800,000		
Thai Polyethylene	HDPE 1	140,000	1989	100
	HDPE 2	180,000	1997	
	HDPE 3	240,000	2001	
	HDPE 4	400,000	2010	
	LLDPE	120,000	1990	
	LDPE	100,000	1995	
	PP 1	140,000	1993	
	PP 2	180,000	1997	
	PP 3	400,000	2010	
Thai Plastics and Chemicals	PVC Resin	530,000	1971	91
	PVC Compound	63,000		
TPC Paste Resin	PVC Paste Resin	36,000	1993	91
PT. TPC Indo Plastic & Chemicals	PVC Resin	120,000	1996	96
TPC Vina Plastic and Chemicals Corporation	PVC Resin	200,000	1995	63
Viet-Thai Plastchem	PVC Compound	16,500	1994	66

Company	Product / Service	Capacity (Ton / Year)	Year First Operated	% Shareholding
Map Ta Phut Tank Terminal	Jetty and Tank Terminal	-	1998	82
Rayong Pipeline	Pipe Transportation	-	1998	92
Rayong Engineering and Plant Service	Engineering and Plant Service	-	2001	100

- **Raw Material Procurement**

- **Olefins Production**

The key raw material in Olefins production is Naphtha in which 29% of total consumption comes from local oil refineries and the other 71% is imported from the Middle East and India. In addition, the crackers were designed to use alternative raw materials such as LPG, raffinate, and condensate if Naphtha price is higher than other raw materials.

- **Polyolefins Production**

The key raw material in Polyolefins production is Olefins in which the business has long term Olefins purchase contracts with PTT Global Chemical PLC (PTTGC) at a total of 325,000 tons per year. In addition, the business has contract with in house olefins production for 1,564,000 tons per year while the rest of olefins production is sold to joint ventures and external customers who are the business's olefins plant shareholders. Moreover, the business is also able to procure more Olefins from PTTGC or import in case of Olefins shortages.

- **PVC Production**

The key raw material for PVC production is Vinyl Chloride Monomer (VCM) which the source is partially integrated. Other raw materials are domestically supplied and imported from overseas. The raw materials for VCM production are ethylene dichloride (EDC) and ethylene. TPC produces 53% of its EDC demand in Rayong province and purchases the rest quantity through agents.

B) Environmental Impact

The business is a leader in environmental innovation for sustainable development and places the importance on the continuous development of the innovation for the society, community, and safety. The business operates in an environmentally friendly manner and focuses on the management along the supply chain from upstream (vendors and business

partners) to downstream (customers and partners) by the process that involves the stakeholders. The business is considered the first petrochemical company in Thailand to be certified a prototype for Eco Factory by the Federation of Thai Industries and was awarded the Green Industry Level 5 (Green Network) by the Ministry of Industry. In addition, the business has been exchanging waste and energy both with the internal and external parties to promote the cooperation for the use of shared resources to maximize the values (Industrial Symbiosis) by applying the concept of 3Rs (Reduce, Reuse/ Recycle and Replenish) and Eco- Efficiency, all of which show the determination to preserve the environment and operate the business on the sustainable development principle.

Moreover, the business has applied and certified with ISO 14001 Environmental Management Standard as well as examined the Environmental Performance Assessment Program (EPAP) by 3rd party institutions which are internationally accredited. in order to raise the environmental management system to the world-class standard.

2.4 Undelivered Projects on High-Valued Purchase Agreements

None

SCG Paper

SCG Paper PLC. was established in 1980 by The Siam Cement PLC. and Siam Kraft Co., Ltd. to engage in manufacturing and sale of pulp. Its initial registered capital was Baht 100 million under the name of The Siam Pulp and Paper Co., Ltd. The Company was later converted into a public company in 1994 and raised its capital to Baht 1,400 million. Currently, the registered capital is amounted to Baht 1,563 million. The Company was delisted from the Stock Exchange of Thailand in 2003 and was thereafter renamed to SCG Paper PLC. in April 2007.

The SCG Paper PLC. and subsidiaries is the country's only integrated producer of high quality pulp, paper, and containers. Their main business chain are Packaging chain and Fibrous chain.

Key Information	
Capacity	<p>Packaging Chain</p> <ul style="list-style-type: none"> ● Packaging Paper 2,306,000 tons per year ● Containers <ul style="list-style-type: none"> - Corrugated Containers 1,013,000 tons per year - Flexible Packaging 17,000 tons per year <p>Fibrous Chain</p> <ul style="list-style-type: none"> ● Pulp 470,000 tons per year ● Printing and Writing paper 570,000 tons per year
Main Products	<p>Packaging Chain</p> <ul style="list-style-type: none"> ● Kraft paper, duplex board, corrugated containers, Flexible Packaging <p>Fibrous Chain</p> <ul style="list-style-type: none"> ● Pulp and printing & writing paper
Brand	<ul style="list-style-type: none"> ● Packaging paper & container: Green Carton , Inspired Studio ● Printing and writing paper <ul style="list-style-type: none"> Idea Green, Idea Work, Idea Max, Supreme, Delight, Spring PRO Series – Offset PRO New, Matt PRO New, Gloss Pro New, Card PRO, Note PRO, Text PRO Green Series – Green Offset, Green Card, Green Matt, Green MattCard, Green Form Idea Green Plus Idea Carepack - Food Safety Packaging

Key Information	
Strengths	<ul style="list-style-type: none"> ● Only integrated producer of pulp, paper, and containers in Thailand. ● World-class quality. ● Continual offering innovative products and services. ● Strong domestic distribution channel and marketing system, as well as the worldwide exports. ● Efficient production cost control. ● Total Quality Management – TQM.
Major Business Policy	<ul style="list-style-type: none"> ● Maintain domestic market leadership. ● Aspiring for regional leadership in paper and packaging business. ● Focus on sustainable growth strategy and providing good returns to shareholders and stakeholders. ● Conserve the environment.
Business Development Policy	<ul style="list-style-type: none"> ● Improve existing machines for higher efficiency. ● Develop innovative products to better serve customers' needs ● Seek opportunities in expanding its business with Merger and Acquisition as a priority. ● Develop knowledge, skill and experience for all levels of employees to maintain competitive advantage and become a regional leader.

2.1 Product or Service Features

SCG Paper is the country's leading manufacturer of pulp, paper, and corrugated containers. The business is the only integrated producer in Thailand with production process starting from pulp preparation to manufacture of printing and writing paper, packaging paper, and corrugated containers. Being in such position allows it to appropriately allocate the production capacity, efficiently control the costs, make it relatively less vulnerable to external changes, and add value to its products. There are two major business chains as follows:

- Packaging Chain

The major products comprise of kraft paper for the manufacturing of corrugated containers, extensible sacks, kraft bags, paper core, gypsum linerboard, coated duplex board and various types of corrugated containers packaging, offset laminated packaging, folding carton, flexible packaging, paper pallet, merchandising display, and design solution center.

- **Fibrous Chain**

The main products are eucalyptus pulp and printing & writing paper. It also provides specialty paper, and paper & packaging for food and beverage.

Eucalyptus pulp is used as raw material for various paper grades e.g. printing & writing paper which is used for magazines, notebooks, textbooks and photocopy paper, kraft paper which is used for packaging and containers, specialty paper which is used for industrial applications such as label paper, paper for furniture uses, paper for medical & hygiene uses and also paper & packaging for food and beverage such as cup stock paper and cone cup. In addition, eucalyptus pulp is also used as raw material for other applications e.g. rayon fibers and melamine compound resin.

2.2 Market and Competition

A) Policy and Market Features of Main Products and Services

- **Policy and Market Features**

- 1) Marketing strategy**

SCG Paper focuses on continuous development of products and services to satisfy customers' needs. "Innovation" is the key strategy to increase our sustainable competitiveness in high competitive market. For Packaging Paper Business, SCG Paper has developed new packaging paper called "Hi-Strength" paper, lower basis weight with the same strength comparing with the relative basis weight paper. It saves production cost and environmental resources.

Moreover, SCG Paper continuously improves and develops environmentally friendly products. Our products are awarded for promotion of raw material reduction and reuse by the Green Label, the national environmental certification awarded to specific products which have less detrimental impact on the environment in comparison with other products serving the same function. Additionally, SCG also has its own environmentally friendly certification, called 'SCG eco value'. For example, linerboard (KA, KH, KT, TA, TR, TD) and corrugating medium (CS) were certified by SCG eco value for their higher recycled content comparing with competitors' in the market.

Moreover, SCG Paper is manufacturer of packaging paper who have obtained the FSC-CoC (Chain of Custody) certification. This internationally-recognized certification is granted for products that come from FSC-certified forest and processes. The FSC or the Forest Stewardship Council has taken into account the raw material selection, raw material handling and storage, product amount control, sales and delivery of products before environmentally friendly product guarantee. Our products, e.g. containerboard, sack kraft paper, coreboard, gypsum linerboard and coated duplex board, have gained several types of the FSC-CoC certification(FSC Recycled 100%, FSC Mix 100%, and FSC Mix 70%), ensuring that our products are environmentally friendly, and commit to social responsibility.

Toward total packaging solutions, Packaging Business (Corrugated Containers) has continuously invested in new machinery and equipment so as to offer a variety of products to the customers. The business has expanded its range of printing expert into offset printing and digital printing, aside from flexography printing, the main printing system expertise of the business. Packaging Business has expanded into flexible packaging business. With this flagship expansion, the business has achieved greater flexibility in serving customer requirements. Moreover, Packaging Business (Corrugated Containers) has also invested in designer team development to work proactively and to have a skill set of integrated design, including the design of logo, brand, merchandising display, exhibition, and other printing materials. Design Solution facilities across the country and the region, increase customer confidence on our premium quality products and services.

For Pulp business, it has continuously increased production and sales of dissolving pulp (a raw material used in the textile industry to manufacture rayon fibers and also in melamine industry), after it succeeded in developing high value added pulp “Dissolving Pulp” since 2013.

For Printing and Writing Paper business, develop outsourcing strategy, outsourcing non-printing and writing paper from our partners to satisfy our customer requirements and expand to new market. Moreover, in 2014, it has developed and sold “Idea Green Plus”, premium environmentally friendly paper products with 50% Ecofiber (used paper), delivering high-quality paper as paper from virgin pulp and the same cost as traditional printing paper. This product is geared toward government and private businesses that concern about the environment.

In addition, Printing and Writing Paper business continuously expands its business to non-printing and writing. In 2014, it succeeds in food and beverage packaging development: cone cup, “Idea CarePack” with ultra hygienic system innovation (hygienic paper production process). Also, Idea CarePack has already been certified GMP, passed Optical Brightening Agents (OBAs) and heavy metal test.

New machine glazed paper plant of Siam Nippon Industrial Paper (SNP) (machine glazed paper is used for food, medical & hygienic industry and furniture industry) has commenced operation since October 2014. The production is about 43,000 tons per year.

Another investment is to modify an existing machine to produce high value added products, Glassine Paper, the new interleaving paper used in pressure sensitive labels, with an annual capacity of 60,000 tons per year. This investment makes SCG Paper the first major glassine paper producer in ASEAN, serving high demand both locally and regionally. The production is expected to begin operation by early 2016.

2) Customer Features and Channel of Distribution

Packaging Chain

Packaging Paper

Channel: Directly sold to affiliated firms under SCG Paper and external customers. Products include paper rolls for converting plants and converted products such as sheet board, paper bags, ream paper, and small rolls. The products are also exported to several countries such as Malaysia, Indonesia, Singapore, Vietnam, Cambodia, Myanmar and China etc.

Packaging

Channel: Direct sold by sales representatives and account executives that work closely with the customers, Packaging Business (Corrugated Containers) has totally 19 facilities located in ASEAN, including Thailand, Vietnam, Indonesia, Singapore, and Malaysia. A wide range of products include various types of corrugated containers packaging, offset laminated packaging, folding carton, paper pallet, merchandising display, and design solution center.

Fibrous Chain

Pulp

Channel: Directly sold to affiliates in the Paper Business and external customers and sold through agents for export markets.

Printing & Writing Paper

Channel: 75% of total sales served domestic market by different channels, including printing house, industry uses, agents, converter, modern trade and stationeries stores, and the rest are sold to export markets; Vietnam, Myanmar, Malaysia, Australia, Japan, other ASEAN countries and the Middle East Countries, etc.

Specialty paper for industrial uses

Channel: Directly sold to industrial customers or converters and agents for export markets.

Paper & Packaging for food and beverage

Channel: Sold to through converter and agents.

- Industry, Competition, and Trend

1) Packaging Chain

Demand of packaging paper in Thailand increased by 1-2% y-o-y and expects demand in 2015 to increase by 3-4% y-o-y, resulting from higher domestic consumption.

Demand growth of corrugated containers in 2014 is close to the GDP growth which is 1.5% from the previous year. In the first half of the year, there was a decrease in the expenditure of both public sector and private sector due to political instability. Moreover,

export growth was smaller than expected, due to world economic slowdown. After the political situation reached its settlement in the middle of the year, investors and consumers confidence has been gradually regained, causing an upward trend in production, sales and personal expenditure. Therefore, demand growth of corrugated containers followed suit.

Major industries in 2014 related to corrugated containers demand are still food & beverage and consumer products. Demand is positively impacted by the 2014 FIFA World Cup and related marketing events. As for the frozen food industry, there is a dramatic increase in export of both fresh chicken and processed chicken to Japan, Europe and currently to ASEAN after the cancellation of chicken meat ban on Thailand. As for the beverage industry, bottled water has achieved the highest growth rate which relates to consumer behavior of giving priority to convenience. Products that have achieved the second highest growth rate are juice, green tea and energy drinks. On the contrary, there is a slowdown in the consumption of alcoholic beverages, especially beer, due to increased excise taxes and political instability.

Electrical appliances industry has experienced reduced use of corrugated containers. Production bases of electrical appliances industry have been continuously moved from Thailand, especially in 2014 (there was the announcement of moving the production base of leading Korean appliances brand from Thailand). However, the world's leading manufacturers of photocopier still use Thailand as its production and export base because of competitive advantage skilled labor and they are also planning to expand the production capacity in the next few years.

Since 2013, both public and private sectors have urged the government to launch measures to solve the situation of frozen prawns industry affected by Early Mortality Syndrome but the situation still has not been recovered to its original state. Moreover, Thailand, being downgraded to a Tier 3 over human trafficking, also causes discontinuity in exports. However, it is believed that more effective control of Early Mortality Syndrome could probably increase frozen shrimp export in 2015.

As for the market trend in 2015, it is expected that Thailand's corrugated containers industry will have a higher growth rate than in 2014, following the GDP growth rate which is 3-4%. The driving segments are the food and beverage industry and the consumer products industry. In addition, manufacturers of corrugated containers in ASEAN are now expanding their production capacity, therefore, price competition has become more challenging and urged the entrepreneurs to improve the efficiency of their own organization. Not only could this improvement help reduce containers cost in order to increase the competitive advantages, but also be a main factor that help sustain the company's profitability.

2) Fibrous Chain

Bleached chemical long and short fiber pulp

In 2014, world bleached chemical long and short fiber pulp demand increased by 2% y-o-y. Although, printing & writing paper demand has decreased, demand in tissue paper and packaging paper has increased. The average price of bleached chemical long fiber pulp decreased 5% y-o-y, while the average price of bleached chemical short fiber pulp decreased 15% y-o-y due to new capacity launching into the market from Latin America producers.

In 2015, world bleached chemical long and short fiber pulp demand is expected to be increased by 2% y-o-y. The average price of bleached chemical long fiber pulp tend to increase because of tight supply. However, the average price of bleached chemical short fiber pulp is expected to remain stable after new capacity launching into the market from Latin America producers.

Dissolving Pulp

The demand for dissolving pulp in 2014 increased 8% from 2013 as dissolving pulp is good substitute for other fibers, however, dissolving pulp prices have fallen, driven by a drop of cotton price due to high cotton inventory level.

For 2015, global dissolving pulp demand is expected to increase 3.7% from previous year due to economic growth and higher demand in textile industry, while dissolving pulp price is project to stable or slightly decrease, according to high level of cotton inventory.

Printing and Writing Paper

For Printing and Writing Paper industry in Thailand, demand in 2014 decreased by 11% from previous year especially coated wood-free paper for magazine application. The main factors are electronics media substitution and effect from political uncertainty between the end of 2013 and the beginning of 2014 which resulted in the reduction of promotion marketing activities and advertising media budget. Furthermore, the market competition showed 17% declining of import paper because of political uncertainty and Thai baht depreciation.

For Printing and Writing Paper industry in Thailand, demand in 2015 is projected to decrease 6% y-o-y while business printing and promotion material printing are expected to grow, following political stability and economic recovery.

2.3 Product or Service Procurement

A) Product Procurement Feature

- Raw Material and Suppliers

Packaging Chain

Packaging Paper

Raw Material Type: Wastepaper, bleached and unbleached short fiber pulp, bleached and unbleached long fiber pulp, and chemicals.

Source:

- Wastepaper: 75% from local vendors and 25% from import.
- Bleached and unbleached short fiber pulp: 90% from local vendors and 10% from import.
- Bleached and unbleached long fiber pulp: All from import.
- Main chemicals such as starch, sizing agent, color, and others: From local vendors and import.

Obstacles: Bleached and unbleached short fiber pulps are procured domestically. Unbleached long fiber pulp is entirely imported from a few suppliers within 30-45 days lead-time. The domestic supply of wastepaper is also limited, leading to requiring imported wastepaper, which has higher price than domestic wastepaper.

Packaging

Raw Material Type: Kraft paper

Source: From Siam Kraft Industry Co.,Ltd., a subsidiary of SCG Paper.

Obstacles: No problem on raw materials due to adequate supplies and quality control. Selling price is set by referring to current market price to optimize fair and competitive cost.

Fibrous Chain

Pulp

Raw Material Type: Eucalyptus logs and chips

Source: Eucalyptus logs and chips are bought mainly from open market and contract farming.

Printing & Writing Paper and Non-Printing & Writing Paper such as specialty

paper for industrial uses and Paper & Packaging for food and beverage

Raw Material Type: Bleached long fiber pulp, bleached short fiber pulp, and chemicals.

Source:

- Bleached long fiber pulp from import
- Bleached short fiber pulp from local and import
- Wastepaper from local and import
- Chemicals, synthetic latex, kaolin powder, calcium carbonate, and others from local and import

Obstacles: Bleached long fiber pulp is entirely imported with 30-45 days lead-time.

Environmental Impact

In 2014, SCG Paper has continuously committed to operate its business based on sustainable development philosophy. Risks and opportunities are considered in strategic planning in order to cope with a rapid change of business environment. All stakeholders treating policy is based on principles of good corporate governance that cover economic, social and environmental aspects throughout the period that SCG has been in business.

SCG Paper has risk management which is based on sustainable development throughout the entire business chain. Firstly, potential risk is identified. Secondly, the potential impact of the risk is evaluated. And lastly, after the risk has been identified and evaluated, a risk mitigation plan is developed, to reduce and avoid the impact of an unexpected event. SCG Paper is also committed to our business in line with the 3G concept (Green Product, Green Process and Green Mind).

- Green Product: SCG Paper has emphasized on research and development of environmentally friendly products and services. Under this standard, raw materials from certified forest, which the management system stresses the importance of economic impact (Forest Stewardship Council, FSC), will be supplied to the production of quality paper. There is higher proportion of recycled paper or EcoFiber in our products such as Idea Green Plus paper (Ecofiber is mixed in product around 50%), Idea CarePack without fluorescent, packaging paper from 100% recycled paper. In 2014, three products, which are gypsum linerboard, Idea Green Card, and Idea Green offset, are re-certified under SCG Eco Value.

- Green Process: SCG Paper has used high technology and continuously improved manufacturing process to reduce use of resources. For example, the waste from production such as heat and raw materials, are reused. For Siam Kraft Industry Company's paper machine 16 (PM16), it consumes less resources and energy without releasing pollution. Biogas, which is an indirect result from anaerobic water treatment from PM16 production, can be used as an alternative fuel. There are various projects which are develop its process to be environmentally friendly such as autoclaved brick, wood pallet from eucalyptus bark, turbo air vacuum, new refiner, absorption heat pump, power boiler 18, power boiler 19 and power boiler 2 (Thai Cane Paper1), high efficiency water treatment, clean coal technology and effective coal management, biomass from recycled paper, bark, and sludge, and organic fertilizer from sludge.

- Green Mind: SCG Paper has encouraged environmental and social responsibility among employees and consumers as well as all stakeholders in the whole supply chain so as to raise their awareness and participate in social and environmental conservation. The company also promoted improvement of community activities such as Opportunity Sharing Campaign, Roy-Yim-Baan-Din, Quality books donation to library, Community Waste Water Treatment project in order to

conserve the endangered plants in Phangnga, Business Partnership project: persuade the other plants in same area to cooperate in making a better community, One Manager One Community: receive feedback and suggestions from the community, Supplier Development for Sustainability: develop knowledge and skill of partners and stakeholders, SCG Paper Green Academy, SCG Green Dream: create environmental awareness to students in Vietnam, Conservation and reforestation activities, Dam building, Career Development for the People in the Community, Development Community such as school, Groundwater pumping with solar cell, Community Goods Center, library, flood protection system.

In 2014, SCG Paper has received numerous awards which guarantee of success in operating business based on sustainable development. Thai Containers Group Company received award for its Green Packaging from the Ministry of Science and Technology. Siam Kraft Industry Company received Thailand Energy Awards 2014 from Ministry of Energy, Thai Union Paper Public Company received ESCO Project Awards 2014 from Department of Alternative Energy Development and Efficiency, Ministry of Energy.

2.4 Undelivered Projects on High-Valued Purchase Agreements

None

3. Risk Management

Risk Management

Risk management is a key process contributing to the attainment of the Group's objectives and goals. The earlier the risks can be identified in advance, the earlier the actions can be taken to protect the downside impacts, and the more new business opportunities can be captured. An effective risk management also plays a vital role in making investment decisions. All of the above will lead to value added for the organization, shareholders, and other stakeholders, as well as contribute to SCG's sustainable growth.

SCG Enterprise Risk Management Framework

After having revamped the SCG Enterprise Risk Management Framework to keep it current and more aligned with international standards, in 2014, SCG has kept its employees and related parties informed of the changes as well as trained them to implement the updated framework intensively. The new framework will create a risk culture that ultimately helps add values to the entire value chain by ensuring timely response to ever-changing business landscape and potential issues, and exploiting risks to identify new business opportunities both domestically and overseas. The SCG Risk Management Framework consists of:

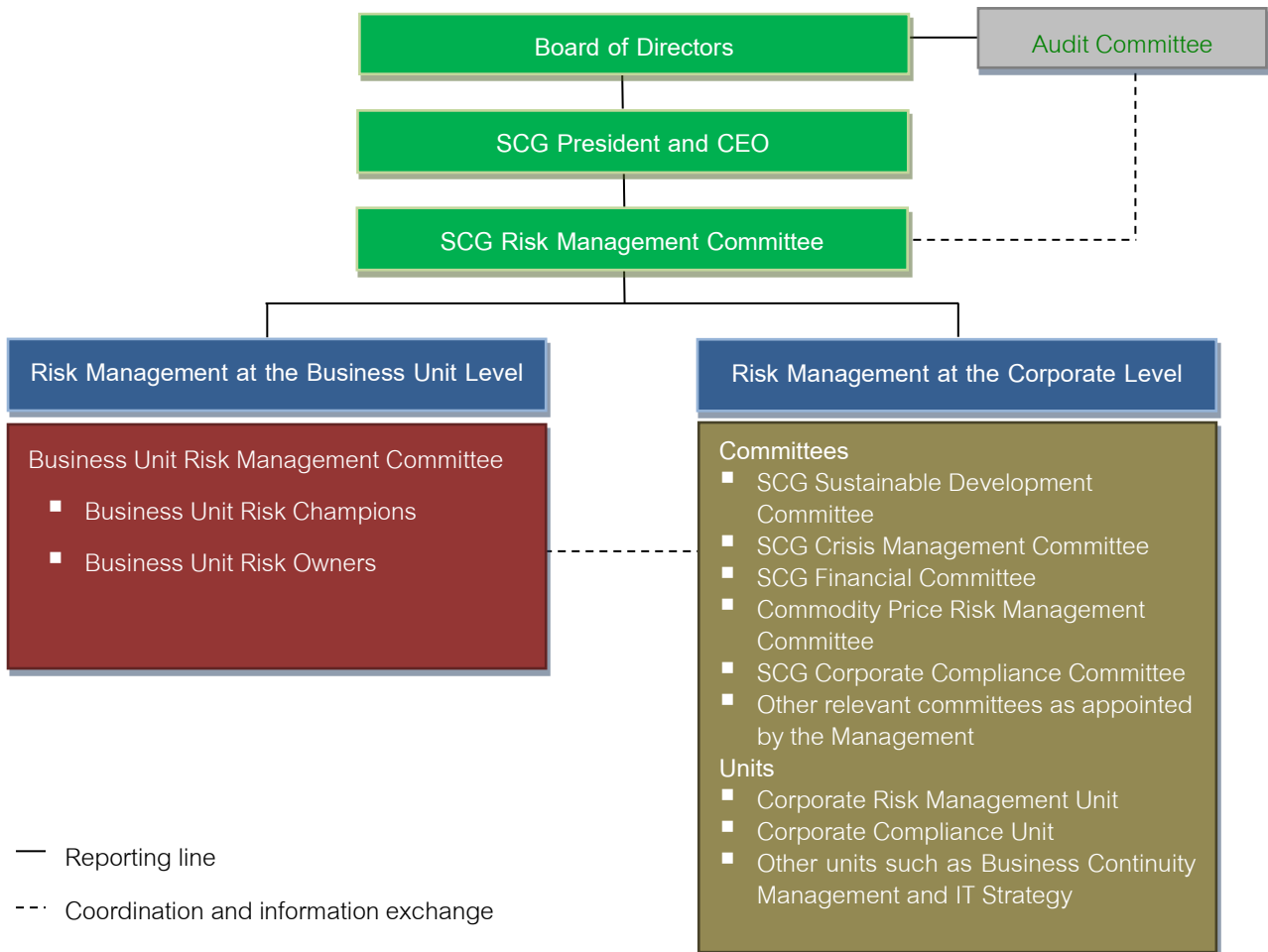
1. **Strategy Establishment**

SCG has established explicit objectives and risk appetite in managing risk in order to ensure consistent risk management practices across the organization.

2. **SCG Risk Management Structure and Responsibilities**

Continuously committed to developing and improving risk management structure and capability, SCG has established the SCG Risk Management Committee chaired by the SCG President and CEO. The Committee oversees, supports, and monitors risk management in all areas, including compliance. The organization structure of SCG's risk management is illustrated below:

Enterprise Risk Management Organizational Structure



The Board of Directors and Audit Committee

The Audit Committee, on behalf of the Board of Directors, lays out risk management policies and oversees risk management process and practice of both domestic and overseas units. The Audit Committee also evaluates the risk management system to ensure that it is efficient, effective, and compliant with the established guidelines.

SCG Risk Management Committee

The SCG Risk Management Committee consists of the President and Vice President of each business unit. The SCG President and CEO serves as the Committee Chairman. The SCG Risk Management Committee has the following core responsibilities:

1. Improves / determines risk management structure and designates responsible parties for risk management.
2. Considers and approves risk management policies, strategies, framework, and plans.
3. Reviews and monitors SCG risk profile.
4. Reports risks and risk management to the Audit Committee.

2.1 Risk Management at the Corporate Level

Risk management at the corporate level comprises top executives from all business units who establish directions, policies, goals, and strategies for managing risks which have a material and pervasive impact upon SCG's business operations. In this regard, SCG has set up relevant committees / corporate units to manage specific areas and closely monitor ensuing situations. These include:

2.1.1 The SCG Sustainable Development Committee defines policies and guidelines for sustainable development in the areas of safety, health, environment, community and social responsibility to be on par with international standards, while setting an example at the national level. The Committee also monitors relevant indicators and risk trends and reports to the SCG Risk Management Committee and the Board of Directors.

2.1.2 The SCG Crisis Management Committee consists of the SCG top executives who are assigned the duty to set policies and strategies and make decisions on how to handle crises that affect, legally and otherwise, business operations and corporate image. The Committee also cooperates with external parties to support handling of these crises and provides updates on such situations to the SCG Risk Management Committee and the Board of Directors.

2.1.3 The SCG Financial Committee manages financial risks in the following ways:

- Establishes policies and guidelines for managing financial and foreign exchange risks with regard to investment transactions, loans, deposits, and international transactions.

- Establishes policies and oversees management of financial derivatives and cash.
 - Monitors financial status, foreign exchange and interest rate trends, and reports such updates to the SCG Risk Management Committee.
- 2.1.4 The Commodity Price Risk Management Committee establishes policies, guidelines, and strategies for managing risks from rising or volatile prices of major raw materials and fuels used in manufacturing processes to manage costs and enhance competitiveness in the global market, and proposes such information to the SCG Risk Management Committee and the Board of Directors.
- 2.1.5 The SCG Compliance Committee formulates strategies, coordinates and systematizes compliance efforts, as well as communicates SCG Compliance Policy to business units and corporate units through the Corporate Compliance Unit and reports to the SCG Risk Management Committee and the Board of Directors.
- 2.1.6 The Corporate Risk Management Unit communicates risk management policies and strategies established by the SCG Risk Management Committee to all relevant parties. The Unit coordinates with business unit risk champions to review risk management outcomes of key risks, which may impact SCG's both short and long term goals, and reports to SCG Risk Management Committee. The Unit also monitors key situations in SCG's strategic countries and compiles reports as part of cross-border risk management. Moreover, the Unit tracks and continuously improves SCG's risk management capabilities, promotes sharing of risk management knowledge, and builds risk management culture throughout the Group.
- 2.1.7 The Corporate Compliance Unit leads the establishment of SCG's Compliance Management System, which comprises of the compliance work system, the compliance framework, and the compliance audit and report to ensure clarity and system-wide linkage between SCG, business units, companies, units, and employees. The Unit reports the compliance management outcomes to SCG Compliance Committee and SCG Risk Management Committee.
- 2.1.8 Other Units are corporate risk owners responsible for managing risks which may have a pervasive impact upon SCG operations or which require specialized expertise; e.g. the Business Continuity Management and IT Strategy Unit (responsible for managing risks resulting in business disruption and IT risks); or the Corporate Communication Office (responsible for managing risks which may affect SCG's reputation). These Units report their risk management outcomes to their respective committees.

2.2 Risk Management at the Business Unit Level

As SCG consists of various business units operating in a diverse range of industries and working environments, each business unit has established Business Unit Risk Management Committee to ensure the efficient risk management and its ability to cope with business specific risks in a timely and appropriate manner. Each of these committees comprises executive officers from all companies within each business unit. Responsible for ensuring systematic risk management, the committees establish risk management structures and strategies, designate risk owners to manage risks, oversee and monitor outcomes of risk management, and report such outcomes to the SCG Risk Management Committee. The designated business unit risk champions communicate risk management policies and strategies set by the Business Unit Risk Management Committee to all relevant parties. The risk champions monitor trends and important situations which may affect both short and long term goals of their business units in order to establish strategies and countermeasures. The champions also track and continuously improve the risk management capabilities of each business unit, as well as promote the exchange of risk management knowledge and build the culture within business unit.

3. Risk Management Process

In order to put the above risk management framework into practice, SCG designated three primary areas to manage risk. These are (1) medium and long-term strategic risk management (2) investment project risk management and (3) operational risk management. The following risk management processes for the above three areas are documented in the “SCG Risk Management Manual”.

3.1 Risk / Opportunity Identification

Facilitating the risk / opportunity identification and creating a common language, SCG developed the SCG risk universe which covers all risks that could potentially impact the business performance. The risks are categorized into eight categories for easy understanding and practice as follows: (1) Safety, Health and Environment Risk (2) Compliance Risk (3) Reputation and Intellectual Property Risk (4) Hazard Risk (5) Input Risk (6) Process Risk (7) Financial Risk and (8) Business Risk.

3.2 Risk Assessment

SCG established common risk metrics to standardize assessment methodology across the organization. Risk owners use various tools (e.g. scenario analysis, correlation analysis, and benchmarking) to assess the likelihood, severity, and manageability of risk. The assessment results are then compared with specified risk limits, which are devised in accordance with risk appetite. SCG divides risk limit into two levels, the corporate level and the Business Unit level.

3.3 Risk Response

SCG chooses an appropriate risk mitigation strategy, i.e. Retain, Exploit, Transfer, Reduce and Avoid, to manage a specific risk, in line with SCG limit. If the risk owners find that a residual risk remains higher than the designated risk limit, countermeasures must be clearly stated or emergency response and business continuity plans must be developed in case of a crisis. For emerging opportunities, business plans must be developed to capture such opportunities on a timely basis.

3.4 Reporting and Monitoring

The risk management results are reported to the Business Unit Risk Management Committee and SCG Risk Management Committee, respectively. Then, the reports are presented on to the Audit Committee on a quarterly basis.

4. Building a Corporate Risk Culture

SCG recognizes that the risk culture is a critical component of the success of risk management, even with leading risk management tools and standards. If parties within the Group do not share a similar understanding of the risk management framework or risk appetite, or possess mindsets which are not in accordance with SCG risk management guidelines, erroneous decision-making can arise. SCG has, therefore, established guidelines for building a corporate risk culture as follows:

- Communicate messages from the “tone at the top” regarding the significance of risk management, with executives as role models in risk management.
- Develop the risk management system which can add value to the business by designating the Corporate Risk Management Unit to follow-up on progress and continuously improve the system.
- Enable practical application at work by designating a business unit risk champion.
- Specify roles and accountabilities of each risk owner.
- Develop joint commitment among key concerned parties via regular meetings, interviews and surveys.
- Prescribe risk as an agenda item of major meetings at each company.
- Designate risk management as a component of employee training and development programs.

Key Risks and Management Strategies in Accordance with the Sustainable Development Approach

Safety, Health, and Environment Risk

1. Safety and Health Risks / Mitigation Plans

As SCG conducts its businesses in heavy industries which rely upon both machinery and chemical substances, the Group recognizes the importance of the health and safety of its employees and business partners. However, overseas operations in countries, whose environments and safety and health standards deviate from those specified by SCG, can be susceptible to safety and health risks. Therefore, SCG has stipulated risk appetite and risk limits indicating that health and safety risks are considered unacceptable at SCG and continuously enforced offensive measures to prevent losses from occurring. SCG has implemented its Safety Performance Assessment Program (SPAP) by establishing and adopting key risk control systems such as the Behavior Based Safety to reduce risky behavior, the Management of Change to diminish risks induced by shifts in working environments, and the Proactive Key Performance Indicator (KPI) to regulate risk-reduction activities to meet the target. In addition, SCG has continuously developed and strengthened its transport safety systems including defensive driving coaching, route hazard maps detailing dangerous areas and rest areas along the 19 main transport routes, GPS safety control systems, and in-cab cameras to monitor and assess drivers' behavior, which will then be used to inform subsequent training. As a result of the implementation of the above safety and health risk measures, the number of total incidents decreased from the previous year. However, safety and health risks still remain a challenge in the face of each country's differing environments and safety and health standards.

Business Opportunities

It is SCG's aim to continuously develop its position as the leader of change, and this extends to its suppliers. SCG coordinated with major suppliers to agree upon and sign on the SCG Supplier Code of Conduct the scope of which includes safety and health matters. In addition, SCG has successfully implemented the SPAP in overseas companies that SCG operates and disseminated to its alliances the application of these safety management principles. With the synergy of SCG and its alliances, the practice can reach the wider society and bring about sustainable business conduct not only domestically but also overseas.

2. Environment Risks / Mitigation Plans

As a result of climate change and natural disasters that are ever-increasing both in numbers and destructiveness, various environmental conservation movements have become active and may affect continuity of business operations, the Group's reputation, or increasing costs due to

compensation expenses which may arise. Thus, SCG has consistently demonstrated its commitments to corporate social responsibility through its projects such as SCG Conserving Water for Tomorrow and Community Partnership Association. In addition, SCG also cultivates in its employees and consumers environmental consciousness through the online social network to change consumer behavior and promote exchange of environment-related news, knowledge, and experience. Along the same vein, SCG also creates Thai Green Market, a network through which consumers can become more informed of natural products and more environmentally-conscious.

Furthermore, SCG recognizes that energy consumption directly leads to greenhouse gas emissions, one of the main causes of global warming. Therefore, SCG is continuously trying to improve the efficiency of its production in line with energy efficiency target. For overseas production, SCG makes a strategic choice to utilize a country's natural resources according to their availability and price competitiveness. In addition, SCG strives to increase the use of renewable energy, to explore for sources of alternative energy and new types of fuels, and to develop products that reduce energy consumption and greenhouse gas emissions.

Business Opportunities

Several key global changes are currently driven by megatrends, and one such megatrend is the consumption of products and services with green concepts, which SCG believes presents an opportunity for increased sales. To this end, SCG has researched and developed environmentally-friendly production processes for its products and services such as the production process of hybrid cement that releases less Carbon Dioxide (CO₂), Idea Green Plus paper products, in which high-quality eco-fiber derived from used paper is incorporated to substitute wood pulp, plastic coating products for paper which use recycled material in their production, as well as the production process of melamine and ethylene that emits less greenhouse gases.

Compliance Risk

3. Risks from Changes in Laws & Regulations / Mitigation Plans

SCG's compliance risks encompass risks of non-compliance of both external and internal requirements such as laws, governmental policies, anti-corruption program, SCG Code of Conducts, and strategic voluntary standards. Laws and governmental policies in particular are subject to constant change. Non-compliance or partial compliance could negatively affect the reputation of the Group and result in significant penalties and fines or loss of business opportunities. Therefore, in 2014, the Corporate Compliance Unit, in cooperation with business units, created the Law & Regulation Compliance Program to ensure visibility and system-wide linkage between SCG, business units, companies, units, and employees.

SCG has developed a Compliance Framework, which comprises policies, structures, systems, processes, and roles and responsibilities at all three levels, namely the process owner, the facilitator, and the auditor under the responsibility of SCG Corporate Compliance Committee.

Business Opportunities

In addition to continuously communicating anti-corruption policies to all Managing Directors and employees throughout last year, SCG, as a certified company by the Private Sector Collective Action Coalition against Corruption Council and a leader of change, has demonstrated its commitment to promoting and disseminating such practice to other companies and alliances in Thailand. This is so that the principle and concept of good citizenship and compliance to communities, society, and environment can reach the wider society and bring about sustainable business.

Reputation and Intellectual Property Risk

4. Overseas Reputation Risks / Mitigation Plans

Nowadays, stakeholders can quickly receive news from various media. In the event that the Group becomes the subject of negative news coverage, such swiftness might cause serious impact on the reputation and image of the Group. Such a situation can be especially devastating in overseas due to the different operating environments, practices and cultures which vary from country to country. To manage such risks, SCG employs “Brand Protection” strategy. This includes creating relevant public relations campaigns, installing internal and external communication systems to be used both in normal situations and during crises for consistency, and conducting surveys on attitudes and satisfactions towards the image of the Group, the results from which are used for future risk assessment and planning. Furthermore, Brand Committees have also been established in strategic countries, and they are responsible for outlining a brand management guideline.

Business Opportunities

From SCG Brand Perception Index Survey, SCG has been found to be among the top brands of Thailand, while in overseas, SCG is still facing some challenges. Therefore, SCG has adopted the “Brand Building” strategy to strengthen the brand to increase its competitiveness. To this effect, SCG places emphasis on consolidating various product brands under a single brand “SCG”, to establish a clear direction of business conduct to accommodate future growth, to create strength, and to increase the memorability of the brand for consumers.

Hazard Risk

5. Natural Disasters / Mitigation Plans

As natural disasters increase both in frequency and severity, they can potentially affect the overall economy, damage lives and properties, and bring the supply chain and business operations to a

halt. To prevent such scenarios or rectify possible damages, SCG has implemented business continuity management process to both domestic and overseas companies. This process begins with a value chain analysis to identify critical processes, followed by an assessment and a prioritization of risks in these processes to formulate appropriate risk management strategies and compile a Risk Treatment Plan, an Emergency Response Plan, and a Business Continuity Plan (BCP). The BCP includes an operation plan and designates responsible parties in the event of business disruption during a crisis. Regular drills outlined in the BCP are also mandated.

In addition, SCG attributes importance to natural disaster preparedness by monitoring possible natural disasters via reliable sources from both the government and other organizations. The Corporate Business Continuity Management (BCM) and the BCM of each business unit monitor, process and communicate relevant news and information pertaining to the situation. In the event of emergency, BCM teams alert employees and business units who may be affected to ensure readiness in handling the situation according to the Business Continuity Plan. Past examples include setting up a war room to monitor an electricity incident in the South of Thailand and managing and monitoring drought situation in Rayong province.

Input Risk

6. Labor Shortage and Rising Wages / Mitigation Plans

As the world, Thailand included, is entering a phase of aging society, and the size of working-age population is starting to shrink, labor shortage has become a potential threat that can affect labor-intensive businesses and lead to competition for labor and increases in wages. Inspired by the labor shortage problem in the vocational field in Thailand, SCG has initiated the prototype project “Specialists...the Maker of the Nation Project” to elevate the status of vocational students to “skilled professionals.” Under this program, they are both thinkers and practitioners who will serve as a driving force for a steady development of the country. The project also sets out to prepare vocational personnel for the advent of the ASEAN Economic Community to ensure their success. In addition, relationship-building with universities and other institutions in ASEAN has been continuously performed, with university professors invited to learn more about SCG Thailand and the recruitment of top university students as interns or employees.

Business Opportunities

Labor shortage is a serious issue for property developers. As a result, a number of developers have started looking for prefabricated construction technology to shorten the construction time and lessen labor required. SCG HEIM has established a constant cooperation with property developers in introducing modular houses to their projects, which opens up new business opportunities for SCG.

7. Fluctuation of Fuel and Major Raw Material Price risks / Mitigation Plans

The continuous decrease in the global crude oil prices has led to a drop in energy and commodity prices such as naphtha and fuel oil, which benefits businesses as the production cost is reduced. However, in the long run, risks of prices bouncing back and affecting the production cost are present as well. In terms of preventative measures and corrective actions for such a scenario, SCG has a team of analysts who monitor and assess trends in fuel and major raw material prices to formulate sales plans, specify marketing strategies, and manage and maintain inventory at an appropriate level. Under certain circumstances, SCG uses hedging tools to reduce risks induced by the fluctuation of the commodities prices and maintain its costs competitiveness in the global market. In the second half of 2014, crude oil prices fluctuated wildly and exhibited signs of decreasing due to a surplus in the global supply. As a result, SCG Chemicals made a decision to hedge raw materials in its inventory. On the other hand, because the prices of coal and fuel oil, main fuels of SCG Cement-Building Materials and SCG Paper, showed no sign of soaring, hedging was not conducted.

Business Opportunities

To avoid or alleviate impact from the fluctuation of fuel and major raw material prices, SCG turns to innovation and high-level technology in the development of high value added products and services to meet customers' needs. Examples of these products include 'The NEST,' the first Energy Plus house in ASEAN countries to have the capacity to generate more electricity than the needed amount, and Emisspro®, a high emissivity coating material that reduces energy consumption. The substance was developed out of an attempt to achieve more efficient energy consumption, which led to research and development, and eventual technology licensing business for SCG.

Process Risk

8. Supply Chain Risks / Mitigation Plans

SCG considers all risk factors throughout the supply chain, from raw material procurement, materials and equipment employed in the production, transportation, to sales, and delivery of products and services. This is because any misalignment in the supply chain management can affect the confidence of consumers and other stakeholders as well as impact future operations. Therefore, to manage these risk factors, SCG has employed various instruments and risk assessment methodologies. This includes the assessment of supply chain disruption risks through Business Continuity Management process by prioritizing risks and management capabilities, the "Spend Analysis" that categorizes key production expenses and develops management strategies, Portfolio Management- the identification of key business partners based on business,

environmental, and social risks, and the development of suppliers driven by the concept of sustainable supply chains.

In 2014, SCG Chemicals enhanced its management and operations through the application of the Integrated Business Excellence (IBE) system, which emphasizes the holistic integration among units in the value chain in order to capture more value. As a result, a number of unnecessary expenses were eliminated.

Business Opportunities

SCG's greater overseas business expansion and product variety has increased the complexity of its operation. Effective information integration will not only give executives and related parties an easier access to data and indicators for an appropriate and timely decision, but also allow the Group to anticipate and eliminate imminent risks before the business is affected. Therefore, SCG has reviewed its Visibility Framework for clarity and modernness, starting at the operation process level. In addition, the Visibility Dashboard, an instrument that allows on-site operators to monitor the results, has also been implemented.

9. Human Resources Management and Capability Risks / Mitigation Plans

In preparing the human resources readiness to accommodate future business expansion, SCG has consistently improved its human resources management to better align with its business strategies. For examples, workforce preparation program for future business expansion has been developed using Strategic Workforce Planning, employee competency development, and a talent management system, which takes holistic care of employees in various aspects. Those aspects include wages, remuneration, personal growth, development as well as the assignment of tasks that are commensurate with employees' talent. As for employee competency development, employees at each level will also be given an opportunity to develop their business knowledge through courses suitable for employees at each level that SCG offers.

Business Opportunities

In recruiting SCG staff in overseas operations to accommodate overseas business expansion, SCG attracts prospective employees to join the Group through various means. These include establishing the SCG Brand as "Employer of Choice", engaging in campus recruitments in leading educational institutes, granting local students and staff scholarships from undergraduate to doctoral levels, and fostering good relations with the government sector, the private sector, communities, and leading companies in the countries that SCG has extended its investment to.

Financial Risk

10. Foreign Exchange Rates Fluctuation Risks / Mitigation Plans

The fluctuation of foreign exchange rates can impact export revenues and expenses in importing major raw materials such as naphtha, coal, and waste paper. Such foreign exchange rate volatility poses as a risk for SCG as the Group is increasing its overseas investment expansion and international trade. However, effective management of such risks may contribute to reducing business costs, and avert losses from foreign exchange rates. Therefore, SCG has managed the fluctuation by matching revenue and expense in foreign currencies (Natural Hedge), and also established an agreement with its suppliers to receive or pay in local currencies at an appropriate level. For the remaining exposure, SCG's Financial Committee will consider hedging through forward contracts in an effective and timely manner.

Business Environment Risk

11. Risks from Significant Events in Countries of Investment / Mitigation Plans

SCG continuously assesses and monitors country-specific risks of the countries in which it maintains investments, considering several facets ranging from socio-economic factors, legal and tax systems, infrastructure readiness, to political climate, intra-country conflicts, and major global crises. Reports on risks from significant events in each strategic country are compiled quarterly to assist in the process of country risk management for SCG's companies, especially in overseas. In addition, a Country Business Support Office is established in each country to closely monitor situations. Under certain circumstances, SCG also conducts a Scenario Planning and Sensitivity Analysis to assess potential repercussions from such incidents, and formulates appropriate risk management strategies based on a risk-return trade off analysis.

Business opportunities

From years of engagement in trades in various countries such as Myanmar and continuous assessment and monitoring of risks and business opportunities, SCG has been able to identify opportunities and create competitive advantages such as the construction of first cement production plants in Myanmar and Laos, whose ASEAN construction product markets have shown ample growth potential.

4. Assets Used in Operation

Total Assets

Total assets of The SCG at the end of 2014 were Baht 465,823 million of which 30 percent of them are current assets, comprising of cash and cash equivalents, short-term investment, trade accounts and notes receivable, and inventories. The rest (70 percent) are investments, property, plant and equipment.

Most assets shown in the financial statements of the Company and its subsidiaries were built by and belonged to the Company and its subsidiaries. SCG has no policy to place any assets as collateral.

Total assets can be classified according to main business units as follows:

	<u>2014</u>	<u>2013</u>	
		<u>(Restated)</u>	
SCG Cement-Building Materials	168,662	155,711	Million Baht
SCG Chemicals	183,884	192,063	Million Baht
SCG Paper	73,987	65,169	Million Baht
Other	260,437	246,621	Million Baht

From the consolidated financial statements at the end of 2014, SCG's property, plant and equipment have carrying values of Baht 205,085 million, which are 42 percent of total assets.

Property, Plant and Equipment - Net

(in million Baht)

Business Unit	Land		Building		Machine and Others		Total	
	Dec 31, 14	Dec 31, 13	Dec 31, 14	Dec 31, 13	Dec 31, 14	Dec 31, 13	Dec 31, 14	Dec 31, 13 (Restated)
SCC	604	430	1,638	1,332	1,055	1,290	3,297	3,052
SCG Cement-Building	13,808	12,224	13,968	13,913	56,498	48,705	84,274	74,842
SCG Chemicals	2,870	2,884	5,190	5,407	67,066	67,953	75,126	76,244
SCG Paper	2,140	2,014	6,039	4,850	39,327	33,228	47,506	40,092
Other	604	431	1,638	1,332	1,100	1,296	3,342	3,059
Consolidated Financial	18,389	16,513	26,201	24,436	160,495	142,893	205,085	183,842

Remark: Figures in financial statements are classified according to Business Groups before adjustment of inter-business transactions.

Intangible Assets

- Patent

At the end of 2014, SCG has 271 valid patents comprising 14 invention patents, 63 petty patents and 194 design patents. The number of patent owned by SCG Cement-Building Materials, SCG Chemicals, SCG Paper and the Siam Cement Plc. are 222 patents, 15 patents, 32 patents, and 2 patents, consecutively. List of important patents owned by Companies and subsidiaries are listed below:

No.	Patent Number	Registration Date	Assignee	Application Number	Filing Date	Patent/Petty Patent	Design Patent	Expiry Date
<u>The Siam Cement PLC.</u>								
1	18017	Jan 11, 2005	The Siam Cement Plc.	9901000939 (049446)	Mar 22, 1999	A process for producing pozzolan from kaolin clay and rice husk ash	-	Mar 21, 2019
2	19730	Mar 21, 2006	The Siam Cement Plc.	9901000940 (049447)	Mar 22, 1999	A manufacturing process for cement products and/ or concrete with ceramic coating	-	Mar 21, 2019
<u>SCG Chemicals</u>								
3	37716	Oct 25, 2013	SCG Chemicals Co., Ltd.	1102000373	Feb 4, 2011	-	Container for plant growing	Feb 4, 2021
4	37715	Oct 25, 2013	SCG Chemicals Co., Ltd.	1102000374	Feb 4, 2011	-	Container for plant growing	Feb 4, 2021
5	Petty Patent 7762	Jan 16, 2013	SCG Chemicals Co., Ltd.	1103000619	Jun 21, 2011	Water container	-	Jun 21, 2021

No.	Patent Number	Registration Date	Assignee	Application Number	Filing Date	Patent/Petty Patent	Design Patent	Expiry Date
6	Petty Patent 6747	Dec 9, 2011	SCG Chemicals Co., Ltd.	0903000414	Apr 28, 2009	Fire retardant polyethylene compound composition and product formed from the fire retardant polyethylene compound composition	-	Apr 28, 2019
7	28126	Jun 30, 2010	Thai Polyethylene Co., Ltd.	0101003359	Aug 21, 2001	Titanium catalyst composition for ethylene polymerization and process using thereof	-	Aug 21, 2021
8	25716	Mar 25, 2009	Nawaplastic Industries Co., Ltd.	0502000120	Jan 19, 2005	-	Building materials element	Jan 18, 2015
9	27039	Mar 16, 2010	Nawaplastic Industries Co., Ltd.	0502000122	Jan 19, 2005	-	Building materials element	Jan 18, 2015
10	27134	Mar 16, 2010	Nawaplastic Industries Co., Ltd.	0502000123	Jan 19, 2005	-	Building materials element	Jan 18, 2015
11	28461	Sep 17, 2010	Nawaplastic Industries Co., Ltd.	0502000126	Jan 19, 2005	-	Plastic pallet	Jan 18, 2015
12	28463	Sep 17, 2010	Nawaplastic Industries Co., Ltd.	0502000125	Jan 19, 2005	-	Plastic pallet	Jan 18, 2015
13	33133	Jul 6, 2012	Nawaplastic Industries Co., Ltd.	0702000288	Feb 2, 2007	-	Frame element	Feb 1, 2017
14	33232	Jul 23, 2012	Nawaplastic Industries Co., Ltd.	0702000285	Feb 2, 2007	-	Frame dividing element	Feb 1, 2017

No.	Patent Number	Registration Date	Assignee	Application Number	Filing Date	Patent/Petty Patent	Design Patent	Expiry Date
15	33233	Jul 23, 2012	Nawaplastic Industries Co., Ltd.	0702000287	Feb 2, 2007	-	Sliding frame element	Feb 1, 2017
16	38304	Nov 29, 2013	Nawaplastic Industries Co., Ltd.	1002003129	Oct 29, 2010	-	Base element for container for growing plant	Oct 29, 2020
17	Petty Patent 9305	Nov 10, 2014	Nawaplastic Industries Co., Ltd.	1303000468	Apr 30, 2013	Decoration element	-	Apr 29, 2023

SCG Paper

18	Petty Patent 3439	Aug 21, 2007	SCG Paper Plc.	0603000102	Jan 26, 2006	Splicer for Single Face	-	Jan 25, 2016
19	Petty Patent 3723	Oct 15, 2007	Thai Containers Songkhla (1994) Co., Ltd.	0603000791	Jun 19, 2006	Slitter Knife	-	Jun 18, 2016
20	Petty Patent 3724	Oct 15, 2007	Thai Containers Group Co., Ltd.	0703000328	Mar 16, 2007	Equipment for keeping and delaminate backing sheet of Black Tape	-	Mar 15, 2015
21	Petty Patent 4196	Apr 29, 2008	Siam Kraft Industry Co., Ltd.	0603000103	Jan 26, 2006	Motion detector for slow speed machine	-	Jan 25, 2016
22	Petty Patent 4324	Jun 27, 2008	Siam Kraft Industry Co., Ltd.	0603001675	Oct 17, 2006	Wire twist machine	-	Oct 16, 2016

No.	Patent Number	Registration Date	Assignee	Application Number	Filing Date	Patent/Petty Patent	Design Patent	Expiry Date
23	Petty Patent 4714	Jan 28, 2009	Thai Containers Group Co., Ltd.	0803000764	Jun 12, 2008	Box Partition	-	Jun 11, 2018
24	Petty Patent 6021	Mar 2, 2011	SCG Paper Plc.	0603001927	Dec 7, 2006	Pressure Testing Equipment	-	Dec 6, 2016
25	Petty Patent 6859	Jan 13, 2012	SCG Paper Plc.	0903001383	Nov 25, 2009	Mobile Pressure Testing Equipment	-	Nov 24, 2015
26	Petty Patent 7328	Jul 20, 2012	SCG Paper Plc.	1003000688	Jul 30, 2010	Pallet	-	Jul 29, 2016
27	Petty Patent 8877	May 23, 2014	SCG Paper Plc.	0803001134	Sep 15, 2008	Bolt	-	Sep 14, 2016
28	Petty Patent 9259	Oct 24, 2014	SCG Paper Plc. Khon Khan University Thailand Research Fund	1203000685	Jun 29, 2012	Geopolymer from fly ash and biomass ash which obtained from fluidized bed reactor mixing with fly ash from coal and gypsum combustion	-	Jul 29, 2018
29	29361	Dec 22, 2010	Thai Containers Group Co., Ltd.	0502004374	Dec 6, 2005	-	Cushion	Dec 5, 2015
30	29362	Dec 22, 2010	Thai Containers Group Co., Ltd.	0502004373	Dec 6, 2005	-	Cushion	Dec 5, 2015
31	31692	Jan 17, 2012	Thai Containers Group Co., Ltd.	0702002359	Sep 11, 2007	-	Cushion	Sep 10, 2017

No.	Patent Number	Registration Date	Assignee	Application Number	Filing Date	Patent/Petty Patent	Design Patent	Expiry Date
32	34441	Nov 29, 2012	Thai Containers Group Co., Ltd.	0702002360	Sep 11, 2007	-	Container	Sep 10, 2017
33	34990	Feb 5, 2013	Thai Containers Group Co., Ltd.	0702001297	May 16, 2007	-	Paper Pallet	May 15, 2017
34	34991	Feb 5, 2013	Thai Containers Group Co., Ltd.	0702001298	May 16, 2007	-	Paper Pallet	May 15, 2017
35	34992	Feb 5, 2013	Thai Containers Group Co., Ltd.	0702001299	May 16, 2007	-	Paper Pallet	May 15, 2017
36	35489	Apr 10, 2013	SCG Paper Plc.	0802003034	Oct 3, 2008	-	Container Blank	Oct 2, 2018
37	35765	May 28, 2013	Thai Containers Group Co., Ltd.	0702002882	Oct 31, 2007	-	Carton Blank	Oct 30, 2017
38	35766	May 28, 2013	Thai Containers Group Co., Ltd.	0702002883	Oct 31, 2007	-	Carton Blank	Oct 30, 2017
39	35767	May 28, 2013	Thai Containers Group Co., Ltd.	0702003392	Dec 21, 2007	-	Container Blank	Dec 20, 2017
40	35918	Jun 18, 2013	SCG Paper Plc.	0802003033	Oct 3, 2008	-	Container Blank	Oct 2, 2018
41	36314	Jul 26, 2013	Thai Containers Group Co., Ltd.	0702003153	Nov 28, 2007	-	Carton Blank	Nov 27, 2017
42	36654	Aug 19, 2013	SCG Paper Plc.	0902000310	Feb 11, 2009	-	Folding Chair	Feb 10, 2019
43	37375	Oct 4, 2013	SCG Paper Plc.	0902003323	Oct 29, 2009	-	Container	Oct 28, 2019
44	37766	Oct 29, 2013	SCG Paper Plc.	0902001102	Oct 14, 2009	-	Seat	Oct 13, 2019
45	38819	Jan 17, 2014	SCG Paper Plc.	0902001873	Jun 23, 2009	-	Table	Jun 22, 2019
46	39131	Feb 21, 2014	SCG Paper Plc.	1002003322	Nov 24, 2010	-	Container	Nov 23, 2020
47	39942	May 6, 2014	SCG Paper Plc.	1002003047	Oct 20, 2010	-	Display	Oct 19, 2020
48	40389	Jun 11, 2014	SCG Paper Plc.	1102003701	Dec 28, 2011	-	Carton Blank	Dec 27, 2021

No.	Patent Number	Registration Date	Assignee	Application Number	Filing Date	Patent/Petty Patent	Design Patent	Expiry Date
49	40434	Jun 16, 2014	SCG Paper Plc.	1102003702	Dec 28, 2011	-	Carton Blank	Dec 27, 2021
SCG Cement-Building Materials								
50	19083	Nov 7, 2005	The Concrete Products and Aggregate Co., Ltd.	0201004833	Dec 24, 2002	The rotatable concrete or mortar (mixed cement and sand) mixer system, powered by the engine of the compact truck for installing on the 4 and 6 wheel truck	-	Dec 23, 2022
51	27668	Mar 17, 2010	The Concrete Products and Aggregate Co., Ltd.	0701002440	May 17, 2007	Air brake system for motor	-	Mar 17, 2026
52	27669	Mar 17, 2010	The Concrete Products and Aggregate Co., Ltd.	0702001549	Jun 12, 2007	-	Hydraulic Concrete Bucket Conveyor	Jun 11, 2017
53	33783	Sep13, 2012	The Concrete Products and Aggregate Co., Ltd.	0802001402	Apr 23, 2008	-	Concrete Cube	Apr 22, 2018
54	Petty Patent 3109	Mar 2, 2007	SCG Cement Co., Ltd.	0603000610	May 8, 2006	Producing compressive strength cement by using fluorspar	-	May 7, 2016
55	Petty Patent 3258	Jun 12, 2007	SCG Cement Co., Ltd.	0603001634	Oct 6, 2006	Mixture substance for mining work	-	Oct 5, 2016
56	Petty Patent 4831	Apr 20, 2009	SCG Cement Co., Ltd.	0803001101	Jul 14, 2008	Round column surface polishing Equipment	-	Jul 13, 2018

No.	Patent Number	Registration Date	Assignee	Application Number	Filing Date	Patent/Petty Patent	Design Patent	Expiry Date
57	Petty Patent 6227	May 23, 2011	SCG Cement Co., Ltd.	0803000151	Jan 21, 2008	Equipment for use in cutting or extraction of construction materials	-	Jan 21, 2018
58	Petty Patent 7048	Mar 23, 2012	SCG Cement Co., Ltd.	0903000048	Jan 21, 2008	Method and testing kit for the closed packaging.	-	Jan 20, 2017
59	Petty Patent 7049	Mar 23, 2012	SCG Cement Co., Ltd.	0803000884	Jul 14, 2008	Dust-free by water-curtain	-	Jul 14, 2017
60	20285	Jul 28, 2006	The Siam Refractory Industry Co., Ltd.	0301003134 (084687)	Aug 22, 2003	Procedure for packaging basic brick to improve ventilation system	-	Aug 21, 2023
61	25337	Jan 23, 2009	The Siam Refractory Industry Co., Ltd.	301003133	Aug 22, 2003	Spraying or Mortar Refractory	-	Aug 21, 2023
62	Petty Patent 8528	Dec 11, 2013	SCI Eco Services Co., Ltd.	1203000839	Aug 10, 2012	Solid fuel product that is made from waste	-	Aug 9, 2018
63	Petty Patent 1303001469	Oct 27, 2014	SCG Cement Co., Ltd.	1303001469	Nov 21, 2013	Mortar plaster reology testing apparatus	-	Nov 20, 2023
64	US8864903	Oct 21, 2014	SCG Cement Co., Ltd.	US13/717,054	Oct 29, 2012	Composite plaster including an organic additive	-	Oct 28, 2032
65	AU2012275037	Dec 24, 2014	SCG Cement Co., Ltd.	AU2012275037	Dec 24, 2012	Composite plaster including an organic additive	-	Oct 28, 2032

No.	Patent Number	Registration Date	Assignee	Application Number	Filing Date	Patent/Petty Patent	Design Patent	Expiry Date
66	40409	Jun 13, 2014	SCG Cement Co., Ltd.	0902001876	Jun 23, 2009	-	Mortar injection tip	Jun 22, 2019
67	40433	Jun 16, 2014	SCG Cement Co., Ltd.	0902001877	Jun 23, 2009	-	Mortar injection tip	Jun 22, 2019
68	40467	Jun 18, 2014	SCG Cement Co., Ltd.	0902001878	Jun 23, 2009	-	Mortar injection tip	Jun 22, 2019
69	Petty Patent 8391	Oct 4, 2013	SCG Cement Co., Ltd.	1303000220	Mar 1, 2013	Equipment used to test the strength of the concrete blocks	-	Feb 29, 2019
70	29833	Mar 31, 2011	The Siam Fibre-Cement Co., Ltd.	0602001170	Apr 28, 2006	-	Roof Tile	Apr 27, 2016
71	25463	Mar 19, 2009	SCG Building Materials Co., Ltd.	0502002199	Jun 30, 2005	-	Roof Tile	Jun 29, 2015
72	25464	Feb 17, 2009	SCG Building Materials Co., Ltd.	0502002200	Jun 30, 2005	-	Round Ridge	Jun 29, 2015
73	28232	Jul 16, 2010	SCG Building Materials Co., Ltd.	0502002019	Jun 17, 2005	-	Roof Tile	Jun 16, 2015
74	28233	Jul 16, 2010	SCG Building Materials Co., Ltd.	0502002020	Jun 17, 2005	-	Roof Tile	Jun 16, 2015
75	28234	Jul 16, 2010	SCG Building Materials Co., Ltd.	0502002021	Jun 17, 2005	-	Roof Tile	Jun 16, 2015
76	28235	Jul 16, 2010	SCG Building Materials Co., Ltd.	0602002130	Jul 25, 2006	-	Rood Ridge	Jul 24, 2016
77	28292	Jul 23, 2010	SCG Building Materials Co., Ltd.	0602002133	Jul 25, 2006	-	Rood Ridge	Jul 24, 2016
78	28293	Jul 23, 2010	SCG Building Materials Co., Ltd.	0602002131	Jul 25, 2006	-	Rood Ridge	Jul 24, 2016
79	28294	Jul 23, 2010	SCG Building Materials Co., Ltd.	0602002132	Jul 25, 2006	-	Roof Tile	Jul 24, 2016
80	28295	Jul 23, 2010	SCG Building Materials Co., Ltd.	0602002129	Jul 25, 2006	-	Rood Ridge	Jul 24, 2016

No.	Patent Number	Registration Date	Assignee	Application Number	Filing Date	Patent/Petty Patent	Design Patent	Expiry Date
81	29607	Feb 16, 2011	SCG Building Materials Co., Ltd.	0602003695	Dec 27, 2006	-	Corrugate roof tile	Dec 26, 2016
82	29693	Mar 7, 2011	SCG Building Materials Co., Ltd.	0602003696	Dec 27, 2006	-	Flat roof tile	Dec 26, 2016
83	29694	Mar 7, 2011	SCG Building Materials Co., Ltd.	0602003697	Dec 27, 2006	-	Flat roof tile	Dec 26, 2016
84	29695	Mar 7, 2011	SCG Building Materials Co., Ltd.	0602003698	Dec 27, 2006	-	Flat roof tile	Dec 26, 2016
85	29696	Mar 7, 2011	SCG Building Materials Co., Ltd.	0602003699	Dec 27, 2006	-	Flat roof tile	Dec 26, 2016
86	29697	Mar 7, 2011	SCG Building Materials Co., Ltd.	0602003705	Dec 27, 2006	-	Fascia Bracket	Dec 26, 2016
87	29698	Mar 7, 2011	SCG Building Materials Co., Ltd.	0602003706	Dec 27, 2006	-	Fascia Bracket	Dec 26, 2016
88	29819	Mar 31, 2011	SCG Building Materials Co., Ltd.	0602003700	Dec 27, 2006	-	First row roof tile	Dec 26, 2016
89	30006	May 12, 2011	SCG Building Materials Co., Ltd.	0602002134	Jul 25, 2006	-	Round Ridge	Jul 24, 2016
90	30023	May 23, 2011	SCG Building Materials Co., Ltd.	0602003702	Dec 27, 2006	-	Fascia Bracket	Dec 26, 2016
91	30582	Sep 6, 2011	SCG Building Materials Co., Ltd.	0502000449	Feb 18, 2005	-	Roof mounting mean	Feb 17, 2015
92	30583	Sep 6, 2011	SCG Building Materials Co., Ltd.	0502000452	Feb 18, 2005	-	Roof mounting mean	Feb 17, 2015
93	30821	Sep 27, 2011	SCG Building Materials Co., Ltd.	0502000216	Feb 1, 2005	-	Translucent Flat Tile	Jan 31, 2015
94	Petty Patent 5898	Jan 11, 2011	SCG Building Materials Co., Ltd.	1003000350	Apr 26, 2010	Ventilated cabinet	-	Apr 25, 2016
95	Petty Patent 6099	Mar 25, 2011	SCG Building Materials Co., Ltd.	0903000394	Apr 24, 2009	Connector for waste water in water closet	-	Apr 23, 2015

No.	Patent Number	Registration Date	Assignee	Application Number	Filing Date	Patent/Petty Patent	Design Patent	Expiry Date
96	Petty Patent 6218	May 12, 2011	SCG Building Materials Co., Ltd.	1003000629	Jul 16, 2010	Isostatic punch	-	Jul 15, 2016
97	Petty Patent 6326	Jun 24, 2011	SCG Building Materials Co., Ltd.	1103000369	Apr 12, 2011	Apparatus for roof attachment	-	Apr 11, 2017
98	Petty Patent 6471	Aug 11, 2011	SCG Building Materials Co., Ltd.	1103000368	Apr 12, 2011	Cementitious garden floor	-	Apr 11, 2017
99	Petty Patent 6618	Sep 26, 2011	SCG Building Materials Co., Ltd.	0703000485	Apr 27, 2007	Method for bathroom renovation without damage existing structure	-	Apr 26, 2015
100	China Patent ZL200710305114.7	Aug 17, 2011	SCG Building Materials Co., Ltd.	200710305115	Sep 20, 2007	Apparatus and Method for Forming a Pattern in Ceramic Tile or Slab with Prescribed Thicknes	-	Sep 19, 2027
101	30040	May 25, 2011	Siam CPAC Block Co., Ltd.	0602000284	Feb 2, 2006	-	Construction Materials	Feb 1, 2016
102	Europe Patent EP1717000B1	Apr 1, 2009	Thai Ceramic Co., Ltd.	05450074.9	Apr 25, 2005	A device for making continuous veining of desired patterns extending through the entire thickness of a product and a process of making thereof	-	Apr 24, 2025

No.	Patent Number	Registration Date	Assignee	Application Number	Filing Date	Patent/Petty Patent	Design Patent	Expiry Date
103	33522	Aug 17, 2012	SCG Building Materials Co., Ltd.	0702000121	Jan 12, 2007	-	Concrete block dividing unit	Jan 11, 2017
104	33521	Aug 17, 2012	SCG Building Materials Co., Ltd.	0702000122	Jan 12, 2007	-	Floor tile	Jan 11, 2017
105	33520	Aug 17, 2012	SCG Building Materials Co., Ltd.	0702000123	Jan 12, 2007	-	Concrete block dividing unit	Jan 11, 2017
106	33217	Jul 20, 2012	SCG Building Materials Co., Ltd.	0702000251	Jan 31, 2007	-	Curb	Jan 30, 2017
107	33222	Jul 20, 2012	SCG Building Materials Co., Ltd.	0702001033	Apr 10, 2007	-	Roof tile	Apr 9, 2017
108	33745	Sep 11, 2012	SCG Building Materials Co., Ltd.	0702001034	Apr 10, 2007	-	Roof tile	Apr 9, 2017
109	32920	Jun 22, 2012	SCG Building Materials Co., Ltd.	0702001035	Apr 10, 2007	-	Roof tile	Apr 9, 2017
110	33220	Jul 20, 2012	SCG Building Materials Co., Ltd.	0702002409	Sep 13, 2007	-	Fence	Sep 12, 2017
111	33219	Jul 20, 2012	SCG Building Materials Co., Ltd.	0702002410	Sep 13, 2007	-	Fence	Sep 12, 2017
112	33218	Jul 20, 2012	SCG Building Materials Co., Ltd.	0702002417	Sep 13, 2007	-	Construction material	Sep 12, 2017
113	32919	Jun 20, 2012	SCG Building Materials Co., Ltd.	0702002667	Oct 5, 2007	-	Roof tile	Oct 4, 2017
114	33221	Jul 20, 2012	SCG Building Materials Co., Ltd.	0702002668	Oct 5, 2007	-	Roof tile	Oct 4, 2017
115	32678	May 16, 2012	SCG Building Materials Co., Ltd.	0702002967	Nov 7, 2007	-	Construction material	Nov 6, 2017
116	33744	Sep 11, 2012	SCG Building Materials Co., Ltd.	0802000804	Mar 12, 2008	-	Construction Material	Mar 11, 2018
117	32764	Jun 1, 2012	SCG Building Materials Co., Ltd.	0802003120	Oct 17, 2008	-	Growing unit	Oct 16, 2018

No.	Patent Number	Registration Date	Assignee	Application Number	Filing Date	Patent/Petty Patent	Design Patent	Expiry Date
118	Petty Patent 7542	Oct 12, 2012	SCG Building Materials Co., Ltd.	1003001095	Oct 29, 2010	Vertical green panel	-	Oct 28, 2016
119	Petty Patent 7091	Apr 12, 2012	SCG Building Materials Co., Ltd.	1003001134	Nov 2, 2010	Glass mosaic	-	Nov 1, 2016
120	Petty Patent 6888	Jan 26, 2012	SCG Building Materials Co., Ltd.	1103000083	Jan 28, 2011	ALC counter	-	Jan 27, 2017
121	Petty Patent 6889	Jan 26, 2012	SCG Building Materials Co., Ltd.	1103000303	Mar 25, 2011	Screen wall system	-	Mar 24, 2017
122	Petty Patent 7615	Nov 16, 2012	Cement Thai Home Service Co., Ltd.	1203000798	Jul 31, 2012	High-level display unit	-	Jul 30, 2018
123	Petty Patent 7656	Dec 4, 2012	Cement Thai Home Service Co., Ltd.	1203000799	Jul 31, 2012	Lifting device	-	Jul 30, 2018
124	34903	Jan 28, 2013	SCG Building Materials Co., Ltd.	0802000825	Mar 13, 2008	-	Washbasin	Mar 12, 2018
125	34975	Feb 4, 2013	SCG Building Materials Co., Ltd.	0702002966	Nov 7, 2007	-	Ridge	Nov 6, 2017
126	35905	Jun 14, 2013	SCG Building Materials Co., Ltd.	0702002411	Sep 13, 2007	-	Fence	Sep 12, 2017
127	35906	Jun 14, 2013	SCG Building Materials Co., Ltd.	0702002413	Sep 13, 2007	-	Fence	Sep 12, 2017
128	35904	Jun 14, 2013	SCG Building Materials Co., Ltd.	0802000826	Mar 13, 2008	-	Roof tile	Mar 12, 2018
129	35907	Jun 14, 2013	SCG Building Materials Co., Ltd.	0802001448	Apr 25, 2008	-	Tile	Apr 24, 2018

No.	Patent Number	Registration Date	Assignee	Application Number	Filing Date	Patent/Petty Patent	Design Patent	Expiry Date
130	35919	Jun 18, 2013	SCG Building Materials Co., Ltd.	0702002414	Sep 13, 2007	-	Fence	Sep 12, 2017
131	35921	Jun 18, 2013	SCG Building Materials Co., Ltd.	0802001447	Apr 25, 2008	-	Growing unit	Apr 24, 2018
132	35920	Jun 18, 2013	SCG Building Materials Co., Ltd.	0802001449	Apr 25, 2008	-	Tile	Apr 24, 2018
133	35922	Jun 18, 2013	SCG Building Materials Co., Ltd.	0802001450	Apr 25, 2008	-	Tile	Apr 24, 2018
134	35923	Jun 18, 2013	SCG Building Materials Co., Ltd.	0802001451	Apr 25, 2008	-	Tile	Apr 24, 2018
135	35966	Jun 25, 2013	SCG Building Materials Co., Ltd.	0802000805	Mar 12, 2008	-	Block	Mar 11, 2018
136	35970	Jun 25, 2013	SCG Building Materials Co., Ltd.	0802000823	Mar 13, 2008	-	Bidet	Mar 12, 2018
137	35971	Jun 25, 2013	SCG Building Materials Co., Ltd.	0802000824	Mar 13, 2008	-	Sanitary ware	Mar 12, 2018
138	38303	Nov 29, 2013	SCG Building Materials Co., Ltd.	0802000827	Mar 13, 2008	-	Wall tile	Mar 12, 2018
139	36132	Jul 15, 2013	SCG Building Materials Co., Ltd.	0902000057	Jan 16, 2009	-	Roof tile	Jan 15, 2019
140	36133	Jul 15, 2013	SCG Building Materials Co., Ltd.	0902000506	Feb 25, 2009	-	Roof tile	Feb 24, 2019
141	36134	Jul 15, 2013	SCG Building Materials Co., Ltd.	0902000507	Feb 25, 2009	-	Roof tile	Feb 24, 2019
142	36368	Jul 31, 2013	SCG Building Materials Co., Ltd.	0502000451	Feb 18, 2005	-	Fixing device	Feb 17, 2015
143	36367	Jul 31, 2013	SCG Building Materials Co., Ltd.	0902000056	Jan 16, 2009	-	Roof tile	Jan 15, 2019
144	36369	Jul 31, 2013	SCG Building Materials Co., Ltd.	0902000505	Feb 25, 2009	-	Roof tile	Feb 24, 2019
145	36779	Aug 28, 2013	SCG Building Materials Co., Ltd.	0902000164	Jan 28, 2009	-	Fixing device	Jan 27, 2019

No.	Patent Number	Registration Date	Assignee	Application Number	Filing Date	Patent/Petty Patent	Design Patent	Expiry Date
146	36780	Aug 28, 2013	SCG Building Materials Co., Ltd.	0902000165	Jan 28, 2009	-	Fixing device	Jan 27, 2019
147	37016	Sep 16, 2013	SCG Building Materials Co., Ltd.	0502000450	Feb 18, 2005	-	Fixing device	Feb 17, 2015
148	37017	Sep 16, 2013	SCG Building Materials Co., Ltd.	0502000453	Feb 18, 2005	-	Fixing device	Feb 17, 2015
149	37456	Oct 9, 2013	SCG Building Materials Co., Ltd.	0502000454	Feb 18, 2005	-	Fixing device	Feb 17, 2015
150	38254	Nov 28, 2013	SCG Building Materials Co., Ltd.	0902000163	Jan 28, 2009	-	Fixing device	Jan 27, 2019
151	38775	Jan 10, 2014	SCG Building Materials Co., Ltd.	1002002068	Aug 6, 2010	-	Packaging Design	Aug 5, 2020
152	41212	Aug 25, 2014	SCG Building Materials Co., Ltd.	1202001561	Jun 18, 2012	-	Markings on the packaging box	Jun 17, 2022
153	41279	Sep 1, 2014	SCG Building Materials Co., Ltd.	0802001975	Jun 25, 2008	-	Patterned floor	Jun 24, 2018
154	41280	Sep 1, 2014	SCG Building Materials Co., Ltd.	0802003122	Oct 17, 2008	-	Patterned floor	Oct 16, 2018
155	41281	Sep 1, 2014	SCG Building Materials Co., Ltd.	0802001979	Jun 25, 2008	-	Patterned floor	Jun 24, 2018
156	41282	Sep 1, 2014	SCG Building Materials Co., Ltd.	0802001976	Jun 25, 2008	-	Patterned floor	Jun 24, 2018
157	41283	Sep 1, 2014	SCG Building Materials Co., Ltd.	0802003236	Oct 27, 2008	-	Patterned floor	Oct 26, 2018
158	41284	Sep 1, 2014	SCG Building Materials Co., Ltd.	0802001982	Jun 25, 2008	-	Patterned floor	Jun 24, 2018
159	41285	Sep 1, 2014	SCG Building Materials Co., Ltd.	0802003237	Oct 27, 2008	-	Patterned floor	Oct 26, 2018
160	41286	Sep 1, 2014	SCG Building Materials Co., Ltd.	0802002776	Sep 15, 2008	-	Patterned floor	Sep 14, 2018

No.	Patent Number	Registration Date	Assignee	Application Number	Filing Date	Patent/Petty Patent	Design Patent	Expiry Date
161	41287	Sep 1, 2014	SCG Building Materials Co., Ltd.	0802001978	Jun 25, 2008	-	Patterned floor	Jun 24, 2018
162	41288	Sep 1, 2014	SCG Building Materials Co., Ltd.	0802003121	Oct 17, 2008	-	Patterned floor	Oct 16, 2018
163	41289	Sep 1, 2014	SCG Building Materials Co., Ltd.	0802003239	Oct 27, 2008	-	Patterned floor	Oct 26, 2018
164	41290	Sep 1, 2014	SCG Building Materials Co., Ltd.	0802002927	Sep 26, 2008	-	Patterned floor	Sep 25, 2018
165	41291	Sep 1, 2014	SCG Building Materials Co., Ltd.	0802002929	Sep 26, 2008	-	Patterned floor	Sep 25, 2018
166	41292	Sep 1, 2014	SCG Building Materials Co., Ltd.	0802001981	Jun 25, 2008	-	Patterned floor	Jun 24, 2018
167	41293	Sep 1, 2014	SCG Building Materials Co., Ltd.	0802003621	Dec 9, 2008	-	Patterned floor	Dec 8, 2018
168	41294	Sep 1, 2014	SCG Building Materials Co., Ltd.	0802003235	Oct 27, 2008	-	Patterned floor	Oct 26, 2018
169	41295	Sep 1, 2014	SCG Building Materials Co., Ltd.	0802002451	Aug 15, 2008	-	Patterned floor	Aug 14, 2018
170	41296	Sep 1, 2014	SCG Building Materials Co., Ltd.	0802003536	Nov 27, 2008	-	Patterned floor	Nov 26, 2018
171	41297	Sep 1, 2014	SCG Building Materials Co., Ltd.	0802003238	Oct 27, 2008	-	Patterned floor	Oct 26, 2018
172	41298	Sep 1, 2014	SCG Building Materials Co., Ltd.	0802001977	Jun 25, 2008	-	Patterned floor	Jun 24, 2018
173	41299	Sep 1, 2014	SCG Building Materials Co., Ltd.	0802002928	Sep 26, 2008	-	Patterned floor	Sep 25, 2018
174	41300	Sep 1, 2014	SCG Building Materials Co., Ltd.	0802001980	Jun 25, 2008	-	Patterned floor	Jun 24, 2018
175	41301	Sep 1, 2014	SCG Building Materials Co., Ltd.	0802003622	Dec 9, 2008	-	Patterned floor	Dec 8, 2018
176	41302	Sep 1, 2014	SCG Building Materials Co., Ltd.	0802003124	Oct 17, 2008	-	Patterned floor	Oct 16, 2018

No.	Patent Number	Registration Date	Assignee	Application Number	Filing Date	Patent/Petty Patent	Design Patent	Expiry Date
177	41303	Sep 1, 2014	SCG Building Materials Co., Ltd.	0802003234	Oct 27, 2008	-	Patterned floor	Oct 26, 2018
178	41304	Sep 1, 2014	SCG Building Materials Co., Ltd.	0802003123	Oct 17, 2008	-	Patterned floor	Oct 16, 2018
179	41305	Sep 1, 2014	SCG Building Materials Co., Ltd.	0802002233	Jul 25, 2008	-	Patterned floor	Jul 24, 2018
180	41306	Sep 1, 2014	SCG Building Materials Co., Ltd.	0802002772	Sep 15, 2008	-	Floor tile	Sep 14, 2018
181	41307	Sep 1, 2014	SCG Building Materials Co., Ltd.	0802002053	Jul 1, 2008	-	Parts of the building	Jun 30, 2018
182	41308	Sep 1, 2014	SCG Building Materials Co., Ltd.	0802003125	Oct 17, 2008	-	Patterned floor	Oct 16, 2018
183	41309	Sep 1, 2014	SCG Building Materials Co., Ltd.	0802002773	Sep 15, 2008	-	Floor tile	Sep 14, 2018
184	41310	Sep 1, 2014	SCG Building Materials Co., Ltd.	0802002052	Jul 1, 2008	-	Parts of the building	Jun 30, 2018
185	41311	Sep 1, 2014	SCG Building Materials Co., Ltd.	0802002931	Sep 26, 2008	-	Patterned floor	Sep 25, 2018
186	41313	Sep 2, 2014	SCG Building Materials Co., Ltd.	0702001171	Apr 27, 2007	-	Patterned floor	Apr 26, 2017
187	41314	Sep 2, 2014	SCG Building Materials Co., Ltd.	0702001172	Apr 27, 2007	-	Patterned floor	Apr 26, 2017
188	41315	Sep 2, 2014	SCG Building Materials Co., Ltd.	0702002860	Oct 26, 2007	-	Patterned floor	Oct 25, 2017
189	41316	Sep 2, 2014	SCG Building Materials Co., Ltd.	0702002862	Oct 26, 2007	-	Patterned floor	Oct 25, 2017
190	41317	Sep 2, 2014	SCG Building Materials Co., Ltd.	0702002863	Oct 26, 2007	-	Patterned floor	Oct 25, 2017
191	41318	Sep 2, 2014	SCG Building Materials Co., Ltd.	0702002864	Oct 26, 2007	-	Patterned floor	Oct 25, 2017
192	41319	Sep 2, 2014	SCG Building Materials Co., Ltd.	0702002865	Oct 26, 2007	-	Patterned floor	Oct 25, 2017

No.	Patent Number	Registration Date	Assignee	Application Number	Filing Date	Patent/Petty Patent	Design Patent	Expiry Date
193	41320	Sep 2, 2014	SCG Building Materials Co., Ltd.	0702002993	Nov 14, 2007	-	Patterned floor	Nov 13, 2017
194	41362	Sep 4, 2014	SCG Building Materials Co., Ltd.	0702003357	Dec 18, 2007	-	Patterned floor	Dec 17, 2017
195	41363	Sep 4, 2014	SCG Building Materials Co., Ltd.	0802000800	Mar 12, 2008	-	Patterned floor	Mar 11, 2018
196	41365	Sep 4, 2014	SCG Building Materials Co., Ltd.	0802000801-2	Mar 12, 2008	-	Patterned floor	Mar 11, 2018
197	41413	Sep 8, 2014	SCG Building Materials Co., Ltd.	0802000407	Feb 1, 2008	-	Patterned floor	Jan 31, 2018
198	41414	Sep 8, 2014	SCG Building Materials Co., Ltd.	0802000408	Feb 1, 2008	-	Patterned floor	Jan 31, 2018
199	41415	Sep 8, 2014	SCG Building Materials Co., Ltd.	0802000409	Feb 1, 2008	-	Patterned floor	Jan 31, 2018
200	41453	Sep 12, 2014	SCG Building Materials Co., Ltd.	0802000951	Mar 20, 2008	-	Patterned floor	Mar 19, 2018
201	41454	Sep 12, 2014	SCG Building Materials Co., Ltd.	0802000952	Mar 20, 2008	-	Patterned floor	Mar 19, 2018
202	41456	Sep 12, 2014	SCG Building Materials Co., Ltd.	0702002861	Oct 26, 2007	-	Patterned floor	Oct 25, 2017
203	41518	Sep 17, 2014	SCG Building Materials Co., Ltd.	0802000803	Mar 12, 2008	-	Patterned floor	Mar 11, 2018
204	41519	Sep 17, 2014	SCG Building Materials Co., Ltd.	0802000948	Mar 20, 2008	-	Patterned floor	Mar 19, 2018
205	41520	Sep 17, 2014	SCG Building Materials Co., Ltd.	0802000949	Mar 20, 2008	-	Patterned floor	Mar 19, 2018
206	41521	Sep 17, 2014	SCG Building Materials Co., Ltd.	0802000950	Mar 20, 2008	-	Patterned floor	Mar 19, 2018
207	41544	Sep 19, 2014	SCG Building Materials Co., Ltd.	0802000953	Mar 20, 2008	-	Patterned floor	Mar 19, 2018
208	41545	Sep 19, 2014	SCG Building Materials Co., Ltd.	0802001452	Apr 25, 2008	-	Patterned floor	Apr 24, 2018

No.	Patent Number	Registration Date	Assignee	Application Number	Filing Date	Patent/Petty Patent	Design Patent	Expiry Date
209	41546	Sep 19, 2014	SCG Building Materials Co., Ltd.	0702003358	Dec 18, 2007	-	Patterned floor	Dec 17, 2017
210	41589	Sep 24, 2014	SCG Building Materials Co., Ltd.	0902001707	Jun 5, 2009	-	Patterned floor	Jun 4, 2019
211	41590	Sep 24, 2014	SCG Building Materials Co., Ltd.	0902000059	Jan 16, 2009	-	Patterned floor	Jan 15, 2019
212	41591	Sep 24, 2014	SCG Building Materials Co., Ltd.	0902000657	Mar 6, 2009	-	Patterned floor	Mar 5, 2019
213	41592	Sep 24, 2014	SCG Building Materials Co., Ltd.	0902000895	Mar 19, 2009	-	Patterned floor	Mar 18, 2019
214	41593	Sep 24, 2014	SCG Building Materials Co., Ltd.	0902001711	Jun 5, 2009	-	Patterned floor	Jun 4, 2019
215	41594	Sep 24, 2014	SCG Building Materials Co., Ltd.	0902001710	Jun 5, 2009	-	Patterned floor	Jun 4, 2019
216	41595	Sep 24, 2014	SCG Building Materials Co., Ltd.	0902001210	Apr 24, 2009	-	Patterned floor	Apr 23, 2019
217	41596	Sep 24, 2014	SCG Building Materials Co., Ltd.	0902003082	Oct 14, 2009	-	Patterned floor	Oct 13, 2019
218	41597	Sep 24, 2014	SCG Building Materials Co., Ltd.	0902000898	Mar 19, 2009	-	Patterned floor	Mar 18, 2019
219	41598	Sep 24, 2014	SCG Building Materials Co., Ltd.	0902000896	Mar 19, 2009	-	Patterned floor	Mar 18, 2019
220	41599	Sep 24, 2014	SCG Building Materials Co., Ltd.	0902001709	Jun 5, 2009	-	Patterned floor	Jun 4, 2019
221	41600	Sep 24, 2014	SCG Building Materials Co., Ltd.	0902000897	Mar 19, 2009	-	Patterned floor	Mar 18, 2019
222	41601	Sep 24, 2014	SCG Building Materials Co., Ltd.	0902003084	Oct 14, 2009	-	Patterned floor	Oct 13, 2019
223	41602	Sep 24, 2014	SCG Building Materials Co., Ltd.	0902002939	Oct 2, 2009	-	Patterned floor	Oct 1, 2019
224	41603	Sep 24, 2014	SCG Building Materials Co., Ltd.	0902002937	Oct 2, 2009	-	Patterned floor	Oct 1, 2019

No.	Patent Number	Registration Date	Assignee	Application Number	Filing Date	Patent/Petty Patent	Design Patent	Expiry Date
225	41604	Sep 24, 2014	SCG Building Materials Co., Ltd.	0902003085	Oct 14, 2009	-	Floor tile	Oct 13, 2019
226	41605	Sep 24, 2014	SCG Building Materials Co., Ltd.	0902001213	Apr 24, 2009	-	Wall tile	Apr 23, 2019
227	41606	Sep 24, 2014	SCG Building Materials Co., Ltd.	0902003083	Oct 14, 2009	-	Floor tile	Oct 13, 2019
228	41607	Sep 24, 2014	SCG Building Materials Co., Ltd.	0902002938	Oct 2, 2009	-	Patterned floor	Oct 1, 2019
229	41608	Sep 24, 2014	SCG Building Materials Co., Ltd.	0902001212	Apr 24, 2009	-	Wall tile	Apr 23, 2019
230	41609	Sep 24, 2014	SCG Building Materials Co., Ltd.	0902003079	Oct 14, 2009	-	Floor tile	Oct 13, 2019
231	41610	Sep 24, 2014	SCG Building Materials Co., Ltd.	0902003077	Oct 14, 2009	-	Floor tile	Oct 13, 2019
232	41611	Sep 24, 2014	SCG Building Materials Co., Ltd.	0902001211	Apr 24, 2009	-	Wall tile	Apr 23, 2019
233	41612	Sep 24, 2014	SCG Building Materials Co., Ltd.	0902003081	Oct 14, 2009	-	Floor tile	Oct 13, 2019
234	41613	Sep 24, 2014	SCG Building Materials Co., Ltd.	0902000658	Mar 6, 2009	-	Patterned floor	Mar 5, 2019
235	41614	Sep 24, 2014	SCG Building Materials Co., Ltd.	0902000899	Mar 19, 2009	-	Patterned floor	Mar 18, 2019
236	41615	Sep 24, 2014	SCG Building Materials Co., Ltd.	0902001708	Jun 5, 2009	-	Patterned floor	Jun 4, 2019
237	41616	Sep 24, 2014	SCG Building Materials Co., Ltd.	0902002192	Jul 22, 2009	-	Patterned floor	Jul 21, 2019
238	Petty Patent 7794	Jan 24, 2013	SCG Building Materials Co., Ltd.	1103001300	Dec 6, 2011	Rain filtering device	-	Dec 5, 2017
239	Petty Patent 7821	Feb 1, 2013	SCG Building Materials Co., Ltd.	1203001319	Nov 16, 2012	Air washing foot valve	-	Nov 15, 2018

No.	Patent Number	Registration Date	Assignee	Application Number	Filing Date	Patent/Petty Patent	Design Patent	Expiry Date
240	Petty Patent 7898	Mar 4, 2013	SCG Building Materials Co., Ltd.	1203000406	Apr 24, 2012	Foundation system	-	Apr 23, 2018
241	Petty Patent 8140	Jul 15, 2013	SCG Building Materials Co., Ltd.	1103001301	Dec 6, 2011	Rain filtering device	-	Dec 5, 2017
242	Petty Patent 8297	Sep 16, 2013	SCG Building Materials Co., Ltd.	1003000717	Aug 6, 2010	Tile reverse device	-	Aug 5, 2016
243	Petty Patent 8328	Sep 24, 2013	SCG Building Materials Co., Ltd.	0903000393	Apr 24, 2009	Wall installation system	-	Apr 23, 2015
244	Petty Patent 8327	Sep 24, 2013	SCG Building Materials Co., Ltd.	1303000079	Jan 24, 2013	Heat trapping device	-	Jan 23, 2019
245	Petty Patent 8328	Sep 24, 2013	SCG Building Materials Co., Ltd.	0903000393	Apr 24, 2009	Wall plate mounting systems and assemblies	-	Apr 23, 2019
246	Petty Patent 8637	Feb 12, 2014	SCG Building Materials Co., Ltd.	1303000336	Mar 27, 2013	Parts for installation frame.	-	Mar 26, 2023
247	Petty Patent 8916	Jun 9, 2014	SCG Building Materials Co., Ltd.	1303000299	Mar 20, 2013	Power management unit in a building with electricity reserves in itself	-	Mar 19, 2023
248	Petty Patent 8917	Jun 9, 2014	SCG Building Materials Co., Ltd.	1303001089	Sep 16, 2013	Cropping systems help the particular weather conditions.	-	Sep 15, 2023

No.	Patent Number	Registration Date	Assignee	Application Number	Filing Date	Patent/Petty Patent	Design Patent	Expiry Date
249	Petty Patent 8940	Jun 23, 2014	SCG Building Materials Co., Ltd.	0903000195	Mar 6, 2009	Planting material	-	Mar 5, 2019
250	Petty Patent 9162	Sep 24, 2014	SCG Building Materials Co., Ltd.	1303001541	Dec 6, 2013	Set Adjustable Fan	-	Dec 5, 2023
251	Petty Patent 9215	Oct 13, 2014	SCG Building Materials Co., Ltd.	1403000092	Feb 12, 2014	System of growing plants vertically	-	Feb 11, 2024
252	Petty Patent 9217	Oct 13, 2014	SCG Building Materials Co., Ltd.	1303001325	Oct 18, 2013	Set for roof ventilation	-	Oct 17, 2023
253	Petty Patent 9218	Oct 13, 2014	SCG Building Materials Co., Ltd.	1303001540	Dec 6, 2013	Equipment for the installation of the roof	-	Dec 5, 2023
254	Petty Patent 9306	Nov 10, 2014	SCG Building Materials Co., Ltd.	1203000444	May 3, 2012	Installation slabs	-	May 2, 2022
255	Petty Patent 9395	Dec 19, 2014	SCG Building Materials Co., Ltd.	0903000395	Apr 24, 2009	Production of ceramic tiles decorated with fluorescent paint over a fire	-	Apr 23, 2019
256	40369	Jun 9, 2014	SCG Landscape Co.,Ltd	1102003513	Dec 6, 2011	-	Package	Dec 5, 2021
257	Petty Patent 8043	May 23, 2013	SCG Building Materials Co., Ltd.	0803001305	Oct 31, 2008	Cement for fiber cement board	-	Oct 30, 2018

No.	Patent Number	Registration Date	Assignee	Application Number	Filing Date	Patent/Petty Patent	Design Patent	Expiry Date
258	Petty Patent 8719	Mar 14, 2014	The CPAC Roof Tile Co., Ltd.	1203001424	Jun 1, 2012	Roof Tiles	-	May 31, 2022
259	Petty Patent 8721	Mar 17, 2014	The Siam Fibre-Cement Co., Ltd.	1303001128	Sep 24, 2013	Installation of plaques	-	Sep 23, 2023
260	Taiwan Patent 1401146	Jul 11, 2013	SCG Building Materials Co., Ltd.	96135120	Sep 20, 1950	Apparatus and Method for Forming a Pattern in a Ceramic Tile or Slab with Prescribed Thickness	-	Sep 19, 1970
261	Europe Patent EP2065150A1	Mar 5, 2014	SCG Building Materials Co., Ltd.	7450217	Nov 27, 1950	A Device for Making Continuous Veining of Desired Patterns Extending Through the Entire Thickness of a Product, A Process of Making Thereof	-	Nov 26, 1970
262	Germany Patent EP2036694	Mar 5, 2014	SCG Building Materials Co., Ltd.	7116535.1	Sep 20, 1950	Apparatus and Method for Forming a Pattern in a Ceramic Tile or Slab with Prescribed Thickness	-	Sep 19, 1970
263	Petty Patent 3196	May 3, 2007	SCG Logistics Management Co., Ltd.	0603000996	Jul 28, 2006	Attachment Part of Truck for Loading	-	Jul 27, 2016

No.	Patent Number	Registration Date	Assignee	Application Number	Filing Date	Patent/Petty Patent	Design Patent	Expiry Date
264	Petty Patent 3440	Aug 21, 2007	SCG Logistics Management Co., Ltd.	0603000139	Feb 3, 2006	Level Measurement Equipment of Barge Draft	-	Feb 2, 2016
265	Petty Patent 4011	Feb 1, 2008	SCG Logistics Management Co., Ltd.	0603001619	Oct 5, 2006	Arrangement Equipment for Wood Slab	-	Oct 4, 2016
266	Petty Patent 5135	Nov 5, 2009	SCG Distribution Co., Ltd.	0703000033	Jan 9, 2007	Warning System for Doze Off	-	Jan 8, 2017
267	Petty Patent 5155	Dec 4, 2009	SCG Distribution Co., Ltd.	0803001512	Dec 22, 2008	Canvas Tester	-	Dec 21, 2018
268	Petty Patent 6310	Jun 17, 2011	SCG Distribution Co., Ltd.	0903001006	Sep 11, 2009	Multi Wall System	-	Sep 10, 2019
269	35965	Jun 21, 2013	SCG Distribution Co., Ltd.	0802000673	Feb 27, 2008	-	Breath Alcohol Tester	Feb 26, 2018
270	37767	Oct 29, 2013	SCG Experience Co., Ltd.	0902001826	Jun 19, 2009	-	Packaging Design	Jun 18, 2015
271	Petty Patent 9002	Jul 23, 2014	SCG Trading Co., Ltd.	1103000443	May 3, 2011	Liquid Coal Fuel	-	May 2, 2015

- **Concession**

Concessions in limestone and gypsum mines are long-lived. Their maturities have been continuously extended because cement is a fundamental product for construction and infrastructure related to the country's economy.

Details of utilized concessions of The Siam Cement Public Company Limited and Companies under SCG Cement-Building Materials are shown in below table

Concessionaire	Location	Type of Mineral	Number of Concession (Copies)	Type of Area	Area (Rai)	Remaining Years of Concession	Expiry Year
The Siam Cement Plc.	Saraburi	Limestone for cement industry	13	RFD	3,683	2	2017
			3	RFD	897	3	2018
			15	RFD	3,012	21	2036
		Pyrophyllite	1	RFD	95	13	2028
			2	RFD	183	17	2032
	Nakorn Sawan	Gypsum	1	RFD	298	16	2031
			1	RFD	278	10	2025
SCG Cement Co., Ltd.	Lampang	Lignite	1	RFD	209	17	2032
The Siam Cement (Lampang) Co., Ltd.	Lampang	Limestone for cement industry	17	RFD	4,987	3	2018
		Shale for cement industry	5	RFD	1,442	3	2018
		Industrial Clay for cement industry	1	Owned by the company	51	14	2029
			1	Owned by the company	280	20	2035

Concessionaire	Location	Type of Mineral	Number of Concession (Copies)	Type of Area	Area (Rai)	Remaining Years of Concession	Expiry Year
The Siam Cement (Kaeng Khoi) Co., Ltd.	Saraburi	Limestone for cement industry	10	RFD	2,575	12	2027
		Shale for cement industry	3	Owned by the company	874	12	2027
	Lopburi	Industrial Clay for cement industry	1	Owned by the company	218	23	2038
The Siam Cement (Ta Luang) Co., Ltd.	Saraburi	Limestone for cement industry	5	RFD	954	15	2030
		Industrial Clay for cement industry	1	Owned by the company	279	11	2026
			3	Owned by the company	840	23	2038
			1	Owned by the company	86	9	2024
The Siam Cement (Thung Song) Co., Ltd.	Nakorn Sri Thammarat	Limestone for cement industry	19	RFD	4,973	20	2035
	Krabi	Industrial Clay for cement industry	2	Owned by the company	372	23	2038
Kampot Cement Co.,Ltd.	Cambodia	Limestone for cement industry	1	Ministry of industry, Mines and Energy	6,133	51	2066

● BOI Certificates

SCG adheres to the policy to apply for the BOI's privileges in every business it is eligible for. The Group believes that it can fully operate under all BOI's rules and regulations due to its transparent operation based on good corporate governance.

○ SCG Chemicals

The Business acquired BOI tax incentives such as machinery import duty exemption, corporate tax exemption for 8 years from the date of first revenue received, and 50 percent reduction of corporate income tax for 5 years after the exemption period. Details are shown below:

Project	Date Acquired	Expiry of Tax Incentives
PP 3	Jul 24, 2007	Mar, 2023
HDPE 4	Jul 24, 2007	Feb, 2023
Jetty and Terminal	Oct 2, 2003	Dec, 2016
	May 19, 2004	Jul, 2017
	Nov 25, 2004	Jan, 2018
	Dec 12, 2007	Apr, 2023
	Aug 14, 2009	Nov, 2023
	Mar 5, 2010	May, 2024
	Jun 26, 2012	Nov, 2025
Olefins (MOC)	Dec 25, 2006	Jan, 2023
PE COMPOUND	Feb 10, 2003	Feb, 2017
	Mar 11, 2004	Mar, 2018
	Mar 26, 2004	Feb, 2020
	Apr 10, 2006	Nov, 2019
	May 23, 2006	Jul, 2020
	Dec 7, 2007	Mar, 2021
	Apr 20, 2012	Mar, 2026
STEAM	Oct 30, 2009	Apr, 2024
CATALYST	Aug 7, 2009	8 years from the date of first revenue received
INDUSTRIAL WAX	Feb 28, 2013	Nov, 2026
DPEX (LDPE)	Nov 22, 2013	8 years from the date of first revenue received
PE Compound	Feb 10, 2014	8 years from the date of first revenue received

Project	Date Acquired	Expiry of Tax Incentives
R&D (SCG CHEM)	May 6, 2011	Oct, 2026
R&D (SCG CHEM)	May 27, 2011	8 years from the date of first revenue received
R&D (SCG CHEM)	Nov 10, 2011	Dec, 2024
ISOPRENE, Piperylene and DI-Cyclopentadiene (DCPD) (SCG CHEM)	May 21, 2013	8 years from the date of first revenue received
Butene-1 and Methyl Tertiary Butyl Ether (MTBE) (SCG CHEM)	May 21, 2013	8 years from the date of first revenue received
R&D (SCG CHEM)	May 7, 2014	8 years from the date of first revenue received
	Jul 24, 2014	8 years from the date of first revenue received
	Jul 24, 2014	8 years from the date of first revenue received
	Aug 18, 2014	8 years from the date of first revenue received
	Sep 4, 2014	8 years from the date of first revenue received
	Sep 23, 2014	8 years from the date of first revenue received
CALIBRATION	Jun 30, 2003	May, 2019
	Nov 21, 2003	Jun, 2018
	May 22, 2012	Nov, 2025
Industrial Zone	Dec 4, 1997	Mar, 2018
Waste water treatment, Plant Industrial Waste and Toxic Chemicals Management	Mar 20, 2008	Apr, 2023
Human resources development	Dec 16, 2011	Jan, 2027
PVC RESIN	tJul 17, 2007	Jul, 2020
PROFILE PIPE JOINT	Dec 26, 2002	Jan, 2017
	Dec 26, 2003	Feb, 2017
	Apr 23, 2004	Jan, 2018
	Dec 16, 2004	Mar, 2018
	Dec 16, 2004	Jan, 2018

Project	Date Acquired	Expiry of Tax Incentives
PROFILE PIPE JOINT	Oct 4, 2005	Oct, 2018
	Sep 18, 2006	Jul, 2019
	Sep 18, 2006	Mar, 2020
	Dec 29, 2010	Jan, 2024
	Mar 11, 2011	May, 2024
	May 14, 2012	Mar, 2025
	Jul 11, 2012	Jul, 2025
	Sep 25, 2012	Oct, 2025
	Mar 22, 2013	Sep, 2026
MOULD	Aug 23, 2005	Aug, 2018
	Nov 25, 2010	Nov, 2023

The project which receives corporate tax exemption for 8 years from the first date revenue received but doesn't receive corporate tax reduction:

Project	Date Acquired	Expiry of Tax Incentives
R&D (SCG CHEM)	Aug 27, 2009	8 years from the date of first revenue received
R&D (SCG CHEM)	Oct 20, 2011	9 years from the date of first revenue received
R&D (SCG CHEM)	Feb 10, 2012	8 years from the date of first revenue received
R&D (TPC)	Jun 30, 2003	8 years from the date of first revenue received

The project which receives corporate tax exemption for 7 years from the first date revenue received but doesn't receive corporate tax reduction:

Project	Date Acquired	Expiry of Tax Incentives
PIPE, JOINT	Dec 15, 2009	Feb, 2017
	May 6, 2011	Jul, 2018
	Jul 11, 2012	Mar, 2020
	Jan 21, 2014	7 years from the date of first revenue received

The project which receives corporate tax exemption on corporate net profit in an amount equivalent or less than an investment amount of modification project for 3 years from the first date of revenue generated:

Project	Date Acquired	Expiry of Tax Incentives
HDPE1 (Modification)	Dec 23, 2013	Dec, 2016
PP1 (Modification)	Feb 11, 2014	3 years from the date of first revenue received

The project which receives 8 years of corporate tax exemption in an amount equivalent to 100% of an investment amount excluding cost of land and working capital for the projects with measures to reduce environmental impact. So that the project receives the corporate tax exemption on its revenue from existing operation.

Project	Date Acquired	Expiry of Tax Incentives
HDPE2	Feb 3, 2011	Feb, 2019
PP1	Feb 3, 2011	Feb, 2019
LDPE	Feb 3, 2011	Feb, 2019
TERMINAL/ JETTY	Oct 10, 2012	Oct, 2020
PVC RESIN	May 31, 2013	May, 2021
	Aug 15, 2014	Aug, 2022
	Nov 7, 2014	Nov, 2022
PVC PASTE RESIN	Oct 16, 2014	Oct, 2022

The project which receives 3 years of corporate tax exemption in an amount equivalent to 70% of an investment amount excluding cost of land and working capital for the investment promotion in energy for sustainable development. So that the project receives the corporate tax exemption on its revenue from existing operation.

Project	Date Acquired	Expiry of Tax Incentives
COMPOUNDED PLASTICS	May 31, 2013	May, 2016
VINYL CHLORIDE MONOMER (VCM)	May 31, 2013	May, 2016

○ SCG Paper

Details of businesses in SCG Paper receiving BOI privileges:

Project	Date Acquired	Expiry of Tax Incentives
Uncoated paper	Jan 11, 2007	May, 2016
Hygienic plastic coated paper	Jul 12, 2012	Jul, 2018
	Mar 7, 2013	Jun, 2020
Kraft Paper	Feb 14, 2013	Mar, 2019
	Feb 14, 2013	Sep, 2019
	Feb 14, 2013	Dec, 2020
	May 20, 2013	May, 2021
	Feb 20, 2014	Feb, 2022
	Aug 16, 2013	Oct, 2017
Eucalyptus Forest	Feb 6, 2013	Jun, 2021
Cogeneration Plant	Sep 22, 2005	8 years from the date of first revenue received
	Apr 5, 2010	Mar, 2019
Corrugated Container	Apr 1, 2013	Sep, 2020
	Apr 1, 2013	Sep, 2015
	Apr 1, 2013	Oct, 2019
	May 14, 2013	8 years from the date of first revenue received
	Sep 27, 2013	Mar, 2017
Corrugated Sheet and Container	Jul 24, 2007	Jan, 2022

○ SCG Cement-Building Materials

Details of businesses in SCG Cement-Building receiving BOI privileges:

Project	Date Acquired	Expiry of Tax Incentives
Waste Heat Power Generator (WHG)	Nov 6, 2007	Jan, 2018
Solid Waste Pre-Treatment Plant	May 31, 2010	Dec, 2018
Environmental Laboratory	Jun 29, 2012	Apr, 2027
Refuse Derived Fuel (RDF)	Jan 8, 2014	Jul, 2027
Co-generation Power Plant	Dec 2, 2014	8 years from the date of first revenue received
Production line of ceramic roof tiles LINE 3	May 25, 2005	May, 2018
Production line of ceramic roof tiles LINE 4	Dec 4, 2012	Nov, 2020
Production line of ceramic roof tiles LINE 5	Aug 13, 2013	7 years from the date of first revenue received
Fiberglass insulation	Nov 9, 2010	Feb, 2020
Gypsum Products	Jun 6, 2008 Feb 10, 2011	Jan, 2016 Oct, 2019
Export Service Center	Mar 2, 2010	Mar, 2018
Shipping Company	Feb 26, 2013	8 years from the date of first revenue received
Port operations for loading vessels (wat ban dai)	Aug 20, 2013	Dec, 2022

○ Corporate & Investment

Details of businesses in Corporate & Investment receiving BOI privileges:

Project	Date Acquired	Expiry of Tax Incentives
SOLAR ROOF	Mar 20, 2014	8 years from the date of first revenue

Trademarks

The key trademarks of The Siam Cement Public Company Limited and its subsidiaries comprise of “Elephant Device in Hexagon”, “Elephant Device in Circle”, “Erawan Device in Circle”, “Tiger Device in Circle” and “Elephant Device in Hexagon and SCG” etc. There are approximately 549 trademarks, which are registered at The Department of Intellectual Property.



Investment policy in subsidiaries and associate companies

The Siam Cement Public Company Limited is the holding company. Therefore, to ensure clarity in business management and effective resource management to strengthen the organization management according to the long term strategy and corporate governance. SCG has diversified into three core businesses, namely SCG Cement-Building Materials, SCG Chemicals and SCG Paper. And SCG Investment was established to manage investment in jointly invest with leading companies in other businesses, such as agricultural machinery business, automotive business, automotive accessories and equipments business, and steel business. The returns are in term of dividend and management fee.

Please refer to page 5-16 for shareholding structure of direct and indirect ownership of company, associate, subsidiaries, and joint ventures.

5. Legal Disputes

Legal disputes in which the Company is a party concerned or disputed, whether the disputes are cases or unsettled claims and are not related to ordinary course of business, are summarized as follows.

Case: Theft of Company Property (Form of Ordinary Share Certificates) and Forgery of Ordinary Share Certificates by a Former Employee

In the first quarter of 2009, the Company lodged a criminal complaint with the police officers against a former employee for the theft (form of ordinary share certificate) and the forgery of 672,000 Company's ordinary share certificates. In the second quarter, the Company was notified by the Civil Court that the heirs and the estate administrator of the shareholder whose share certificates were forged filed a civil lawsuit against the Company and relevant individuals and juristic persons (9 parties altogether) alleging the joint liability in negligence and claiming for restitution and damages of Baht 223 million.

In the fourth quarter of 2011, the Civil Court decided that the former employee of the Company committed a tort against the plaintiffs and ordered him to return shares of the Company or pay the cash for share prices together with the interest from the commencement date of the tort until the payment is made in full including the dividend which the plaintiffs should have received. The Civil Court also decided that the Company, as the employer, shall be jointly liable to the plaintiffs. The Company and the plaintiffs had each appealed the judgement of the Civil Court to the Appeal Court.

On 29 April 2014, the Appeal Court has made a decision on the case, ordering (i) the former employee who committed a tort to return 672,000 shares of the Company to the plaintiffs or to pay the plaintiffs the share price at the last trading price of the Company's shares on the date of payment, which shall not be less than Baht 314.38 per share, together with dividends and an interest until the payment is made in full, and (ii) the Company, as employer, Thailand Securities Depository Co., Ltd., and relevant persons to be jointly liable with the former employee. On 23 July 2014, the Company has appealed the judgement of the Appeal Court to the Supreme Court. Currently, the case is being reviewed by the Supreme Court.

Risk Reduction of Map Ta Phut Projects

Due to the Central Administrative Court ordered governments authorities to order the temporary suspension of the projects representing a total of 18 projects of SCG Chemicals in the Map Ta Phut Industrial Estate and vicinity of Rayong Province, on 2 September 2010, the Central Administrative Court delivered its judgement to revoke permits of the projects, for which such permits were issued after the Constitution B.E. 2550 came into force, and fall within the list of 11 types of serious impact projects issued on 31 August 2010 by the Ministry of Natural Resources and Environment. As a result of the judgement, almost all projects of the Group which are considered as non-serious impact projects are able to continue

their operations, except for 1 project of the Group namely the Capacity Expansion of Vinyl Chloride Monomer Project of Thai Plastic and Chemicals Public Company Limited; which fall within the list. Around the end of 2012, such project has complied with the paragraph 2 of Article 67 of the Constitution B.E. 2550. The Industrial Estate Authority of Thailand (IEAT) was of the opinion that the project has fulfilled the requirements and accordingly, IEAT has submitted the issue to the prosecutor, requesting the prosecutor to request the Supreme Administrative Court to revoke the temporary suspension order in order to allow the project to resume construction. On 1 April 2013, the prosecutor has filed the petition to the Supreme Administrative Court. On July 2014, the Supreme Administrative Court decided to revoke the temporary suspension of the project. In October 2014, the Group obtained a permit from IEAT and the project is able to resume to normal operations.

6. Other Related Information

1. Company Information

Name:	The Siam Cement Public Company Limited
Stock code:	SCC (Listed on the Stock Exchange of Thailand - SET)
Registration No:	0107537000114
Type of Business:	Holding Company
Website:	www.scg.co.th
Year of Establishment	1913
First Trade Date	April 30, 1975
Headquarter Address	1 Siam Cement Road, Bangsue, Bangkok 10800
Registered capital:	1,600 Million Baht
Paid-up capital:	1,200 Million Baht Comprised of 1,200 Million ordinary shares
Par value:	1 Baht par value
Preferred Share	None
Fiscal Year	January 1 – December 31 of each year
Shareholders	The Crown Property Bureau Group holds approximately 31.6% of shares while the remaining shares are held by other institutional and individual shareholders
Contacts	<p>Corporate Headquarters Tel. 66-2586-3333, 66-2586-4444 Fax 66-2586-2974 e-mail: info@scg.co.th</p> <p>Corporate Secretary Office Tel. 66-2586-6098 Fax 66-2586-3007 e-mail: corporate@scg.co.th</p> <p>Investor Relations Department Tel. 66-2586-3309 Fax 66-2586-3307 e-mail: invest@scg.co.th</p>

Corporate Communications Office

Tel. 66-2586-3770

Fax 66-2586-2974

e-mail: corpcomm@scg.co.th

Designated Directors as Minority Shareholders'

Representative

Fax 66-2586-3007

e-mail: ind_dir@scg.co.th

2. Investment in subsidiaries, associates, jointly-controlled entity and other companies of which their operations are significant are disclosed in page 5-16.

3. References

Registrars: Thailand Securities Depository Company Limited

Address: The Stock Exchange of Thailand Building
1st Floor, 62 Ratchadapisek Road, Klongtoey,
Bangkok 10110

Tel: 66-2229-2800

Fax: 66-2359-1259

e-mail: contact.tsd@set.or.th

Website: www.tsd.co.th

Auditors: KPMG Phoomchai Audit Ltd.

Mr. Winid Silamongkol (Certificated Public Accountant
Registration No. 3378) or

Ms. Sureerat Thongarunsang (Certificated Public Accountant
Registration No. 4409) or

Ms. Pornthip Rimdusit (Certificated Public Accountant
Registration No. 5565)

Address: Empire Tower 50th – 51st Floors,
195 South Sathorn Road, Yannawa, Sathorn,
Bangkok 10120

Tel: 66-2677-2000

Fax: 66-2677-2222



Legal:	SCG Legal Counsel Limited
Address:	1 Siam Cement Road, Bangsue, Bangkok 10800
Tel:	66-2586-5777 or 66-2586-5888
Fax:	66-2586-2976
Trustee:	TMB Bank Public Company Limited
Address:	3000 Phahon Yothin Road, Chatuchak, Bangkok 10900
Tel:	0-2299-1111
Fax:	0-2990-6010
Website:	www.tmbbank.com