

1. Business Policies and Operation

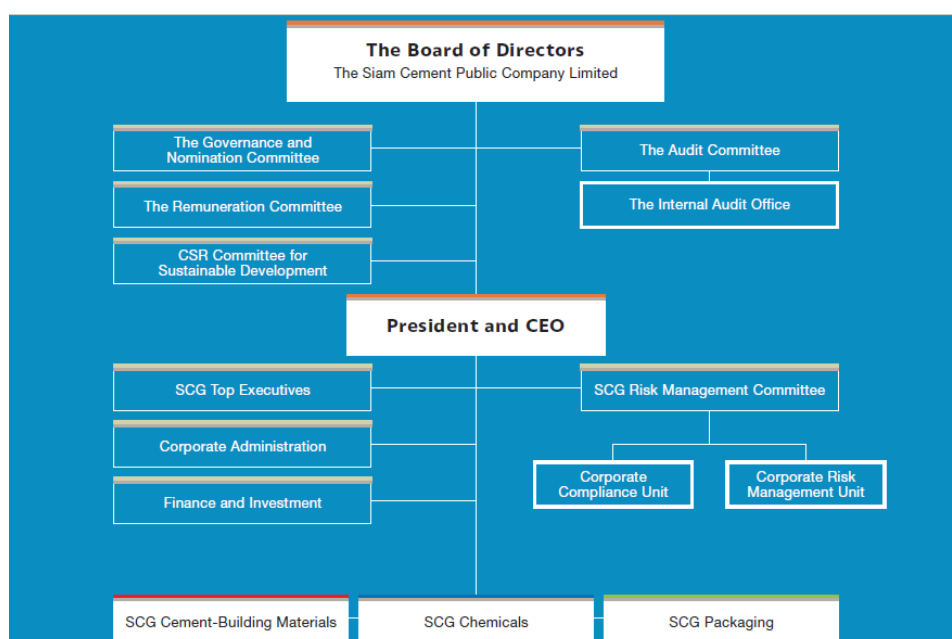
Overview of business and vision

SCG is a leading ASEAN business conglomerate with regional focus, and established commitments towards business conducts that are in line with good corporate governance and sustainable development principles. Established in 1913, following the royal decree of His Majesty King Rama VI, SCG's cement products were the essential materials for the construction of Thailand's infrastructure projects during that period, which have contributed greatly towards the country's modernization. Since its inception, SCG has grown continuously and has earned widespread recognition as a role model for other businesses, both locally and internationally.

Today, SCG is comprised of three core business units, namely 1) SCG Cement-Building Materials, 2) SCG Chemicals and 3) SCG Packaging.

Our vision is that, SCG will be a regional market leader, contributing to the sustainable progress of ASEAN and the local communities where SCG operates. Through SCG's world class business practices, corporate governance principles and uncompromising safety standards, we are committed to creating value for our customers, employees, and all other stakeholders. We will constantly ensure that our operational excellence, technology development and innovation will allow us to provide quality products and services in order to enhance the quality of life for all.

Organization Structure of SCG



Please refer to page 5-18 for shareholding structure of direct and indirect ownership of company, associate, subsidiaries, and joint ventures.

Significant developments during 2013 – 2015 are as followed:

2015

- **SCG Packaging** – SCG Paper Public Company Limited has registered its name change. Effective June 2, 2015, the official name becomes “SCG Packaging Public Company Limited” while “SCG Packaging” will be the branded business name. This name change reflects the company’s strategic focus towards packaging products and applications, with the aim of providing total and sustainable packaging solutions for its customers. Key examples are the continued development of high-quality packaging products and services, which include non-paper based flexible packaging products. The name change is also aligned with the company’s drive to expand its packaging business in ASEAN countries. In June 2015, TC Flexible Packaging Company Limited (TCFP), a 52.5:47.5 joint venture between SCG Packaging and Rengo Company Limited (Japan) has expand Flexible packaging line in ASEAN by acquiring an 80% stake in Tin Thanh Packing Joint Stock Company (or “BATICO”) from the existing shareholders. BATICO is Vietnam’s top-five manufacturer of flexible packaging products, with a capacity of 230 million square meters per year. Furthermore, SCG Packaging has acquired an additional stake in Prepack Thailand Company Limited (or “Prepack”) through the share purchase from the existing shareholders. As a result, SCG Packaging’s stake in Prepack has been increased to 72%, from 22% on January 2015. Moreover, SCG Packaging proceeded to expand packaging paper line in Vina Kraft Paper Company Limited (or “VKPC”), a subsidiary of SCC in Vietnam, with additional capacity of approximately 243,000 tons per annum to tap Vietnam’s rapid demand growth of packaging paper. The new production facility is scheduled to start up in the second quarter of 2017.

2014

- **SCG Cement – Building Materials** – the company has announced the Greenfield investment for 1.8 million tons per year cement plant in Laos which is expected to start up in 2nd quarter of 2017 and also expand its annual production capacity of 2 million tons per year of Mortar in Khonkaen and Lampang with expected commercial operation in the first half of 2016. In addition, SCG Cement – Building Materials and Siam Global House have established joint venture called Global House International to create the construction retail opportunities in warehouse format in ASEAN. Furthermore, the company has acquired stake in Florim Ceramiche S.p.A. (“Florim”) in Italy to manufacture high-end ceramic tiles with capacity of 5 million sq.m. per year which will start up in early 2015. Finally, the

company has acquired 55% in Panel World Company Limited which produces and distributes woodchip cement board. Currently, Panel World has capacity of 2.4 million sq.m. per year and is expanding its capacity of 2.4 million sq.m. per year which was started operation in 2014.

- **SCG Chemicals** – the company has invested 51% stake in Norner Holding AS, Norwegian research and innovation center specialized in polymerization and plastics application. This investment emphasized our continuous focus in High Valued Added products and services. The other 49% stake was acquired in September 2015.
- **SCG Paper** – Thai Containers Group (TCG), a 70:30 joint venture between SCG Paper and Rengo Company Limited (Japan), acquired 90% shares of PT Indoris Printingdo, a manufacturer and distributor of offset cartons in Indonesia and 22% shares of Prepack Thailand Company Limited, a manufacturer and distributor of flexible packaging in Thailand. This transaction is the first flagship expansion into the flexible packaging industry. In addition, Dyna Packs Company Limited (a 75% subsidiary of Thai Containers Group Company Limited) acquired 100% shares of D-In-Pack Company Limited, a manufacturer and distributor of corrugated container in Thailand. Furthermore, SCG Paper invested to upgrade the existing asset of Fibrous Chain to produce glassine paper (used in pressure sensitive labels) with 60,000 tons per year capacity, which is expected to start up by early 2016. This investment makes SCG Paper the first major glassine paper producer in ASEAN.

Furthermore, SCG has increased the stake to 20% in Lysando AG, which is a life sciences related R&D firm for HVA growth.

2013

- **SCG Cement – Building Materials** – the company has announced the Greenfield investment for 1.8 million tons per year cement plant in Myanmar which is expected to start up in 2nd quarter of 2016. In addition, SCG Building Materials, a subsidiary of SCG Cement – Building Materials, acquired 85% of Prime Group Joint Stock Company, a leading ceramic tile producer in Vietnam. Furthermore, Cementhai Ceramics Company Limited, a subsidiary of SCG Cement – Building Materials, has increased stake in sanitary ware of Siam Sanitary ware Company Limited and Siam Sanitary Fittings Company Limited from 35.7% and 44.8% to 71.4% and 90.6% respectively. Moreover, SCG Logistics Management Company Limited, subsidiary of SCG Cement – Building Materials, has signed 51:49 joint venture agreement with Nichirei Logistics (Japan) Company Limited to provide temperature-controlled logistics which was fully operated in 4th quarter of 2014.

- **SCG Chemicals** – founded SCG Eco Polymer Company, a 87%:13% Joint Venture between SCG Chemicals and A.Schulman, Inc. to manufacture Rotational Molding Compound. In addition, SCG Chemicals acquired 100% shares of NSL Chemicals (Thailand) Pte Ltd. Singapore, a shareholder of Bangkok Synthetics – the producer of synthetic rubber. This deal resulted in the SCG Chemicals' share of Bangkok Synthetics increase from 26.01% to 48.84%.
- **SCG Paper** – as a 86.3% stake shareholder of Thai Cane Paper Public company Limited (TCP), the company did the tender offering for all remaining shares to take TCP private. In addition, Thai Container Group (TCG), a 70:30 joint venture between SCG Paper and Rengo Company Limited (Japan), acquired 90% ordinary shares of PT Primacorr Mandiri, a manufacturer and distributor of corrugated container in Indonesia and 75% ordinary shares of Dynapacks Company Limited and Orient Container Company Limited, a manufacturer and distributor of corrugated container in Thailand. In addition, SCG Paper has signed a Memorandum of Understanding with Nippon Paper Industries Company Limited (NPI), which will inject equity for 30% stake in SCG Paper's Fibrous Chain to form a joint venture to enhance the competitiveness.

Supplementary Information

Investment in subsidiaries, associates, joint ventures and other companies of which their operations are significant.

Name	Principal Business / Products	Location (Head Office / Factory)	Telephone	Facsimile	Type of shares	Number of paid-up shares (Million shares)	Issued and paid-up shares (Million Baht)	Direct / Indirect Company and Subsidiaries Holding (Percent)	Total Direct / Indirect Holding * (Percent)
SCG Cement-Building Materials Subsidiaries									
1 SCG Cement Co., Ltd.	Holding company	Bangkok	66-2586-3060-1	66-2586-3072	Ordinary shares	122	4,894	100	100
2 The Concrete Products and Aggregate Co., Ltd.	Holding company and ready-mixed concrete	Bangkok	66-2555-5000	66-2555-5003	Ordinary shares	91	9,140	100	100
3 The Siam Cement (Kaeng Khoi) Co., Ltd.	Cement	Saraburi	66-3624-0000-98	66-3624-0099	Ordinary shares	6	625	100	100
4 The Siam Cement (Ta Luang) Co., Ltd.	Cement	Saraburi	66-3628-8900	66-3628-8909	Ordinary shares	6	575	100	100
5 The Siam Cement (Thung Song) Co., Ltd.	Cement	Nakorn Sri Thamaraj	66-7553-8222	66-7553-8111	Ordinary shares	35	700	100	100
6 The Siam Cement (Lampang) Co., Ltd.	Cement	Lampang	66-5423-7500	66-5423-7501	Ordinary shares	94	589	100	100
7 Khammouane Cement Co., Ltd.	Cement	Laos	(85621) 243-435-6	(85621) 243-437	Ordinary shares	17	5,801	100	100
					Preferred shares	0.03	11		
8 Siam Mortar Co., Ltd.	Dry mortar	Saraburi	66-3624-0000-98	66-3624-0083	Ordinary shares	4	443	100	100
9 The Siam White Cement Co., Ltd.	White cement	Saraburi	66-3621-8400	66-3635-1219	Ordinary shares	2	200	100	100
10 The Siam Refractory Industry Co., Ltd.	Refractory	Bangkok	66-2586-3230	66-2586-2982	Ordinary shares	3	300	100	100
11 Cementhai Energy Conservation Co., Ltd.	Energy service	Bangkok	66-2586-2410	66-2586-3098	Ordinary shares	13	1,310	100	100
12 Eco Plant Services Co., Ltd.	Technical services and plant installation	Saraburi	66-3628-9103	66-3628-1212	Ordinary shares	1	50	100	100
13 Siam Research and Innovation Co., Ltd.	Research and development	Saraburi	66-3627-3152-63	66-3627-3151	Ordinary shares	1	100	100	100
14 SCI Eco Services Co., Ltd.	Industrial waste disposal	Bangkok / Saraburi / Nakorn Sri Thamaraj	66-2962-7295-7	66-2962-7298	Ordinary shares	2	187	100	100
15 PT Pion Quarry Nusantara	Quarry	Indonesia	(6221) 797-1190	(6221) 797-1090	Ordinary shares	0.001	16	100	100
16 PT SCG Pipe and Precast Indonesia	Concrete products	Indonesia	(6221) 797-1190	(6221) 797-1090	Ordinary shares	14	455	100	100
17 PT Semen Lebak	Cement	Indonesia	(6221) 791-83751	(6221) 791-80919	Ordinary shares	0.04	1,193	100	100
18 PT SCG Readymix Indonesia	Ready-mixed concrete	Indonesia	(6221) 797-1190	(6221) 797-1090	Ordinary shares	9	264	100	100
19 PT CPAC Surabaya	Ready-mixed concrete	Indonesia	(6231) 732-1512	(6231) 732-1512	Ordinary shares	1	43	100	100
20 Q Mix Supply Co., Ltd.	Ready-mixed concrete	Bangkok	66-2728-8800	66-2728-8801	Ordinary shares	8	800	100	100

* Directly and indirectly holding through the Company, subsidiaries, associates, joint ventures and other companies.



Name	Principal Business / Products	Location (Head Office / Factory)	Telephone	Facsimile	Type of shares	Number of paid-up shares (Million shares)	Issued and paid-up shares (Million Baht)	Direct / Indirect Company and Subsidiaries Holding (Percent)	Total Direct / Indirect Holding * (Percent)
21 CPAC Lao Co., Ltd.	Ready-mixed concrete	Laos	(85621) 720-385	(85621) 720-224	Ordinary shares	0.05	31	100	100
22 The Concrete Products and Aggregate (Vietnam) Co., Ltd.	Ready-mixed concrete	Vietnam	(8483) 602-7111	(8483) 713-3707	**	-	178	100	100
23 CPAC Concrete Products (Cambodia) Co., Ltd.	Precasted slab	Cambodia	(88523) 990-406	-	Ordinary shares	0.001	17	100	100
24 Silathai Sanguan (2540) Co., Ltd.	Crushing plant	Khonkaen	66-4335-8031	66-4335-8033	Ordinary shares	1	122	100	100
25 Cementhai Building Materials (Singapore) Pte. Ltd.	Holding company	Singapore	(65) 6534-9661	(65) 6534-9662	Ordinary shares	0.6	14	100	100
26 SCG Building Materials Co., Ltd.	Holding company	Bangkok	66-2586-3333	66-2586-2761	Ordinary shares	190	19,009	100	100
27 Cementhai Gypsum Co., Ltd.	Holding company	Bangkok	66-2586-3333	66-2586-2761	Ordinary shares	7	242	100	100
28 Thai Ceramic Holding Co., Ltd.	Holding company	Bangkok	66-2586-3333	66-2586-2761	Ordinary shares	2	200	100	100
29 MRC Roofing Co., Ltd.	Holding company	Bangkok	66-2555-0055	66-2555-0001	Ordinary shares	9	950	100	100
30 The Siam Fibre-Cement Co., Ltd.	Fiber cement roof	Saraburi	66-2586-3333	66-2586-2761	Ordinary shares	110	11,000	100	100
31 The Fibre-Cement Products (Lampang) Co., Ltd.	Fiber cement roof	Lampang	66-5433-7301-5	66-5433-7300	Ordinary shares	2	230	100	100
32 Tip Fibre-Cement Co., Ltd.	Fiber cement roof	Bangkok	66-2286-7888	66-2286-8951-2	Ordinary shares	0.5	25	100	100
33 SCG Landscape Co., Ltd.	Concrete blocks for floor wall and fence	Saraburi	66-2586-6822	66-2586-6800	Ordinary shares	16	1,630	100	100
34 Siam Fiberglass Co., Ltd.	Insulation and glass wools	Saraburi	66-3637-3441-4	66-3637-3445-6	Ordinary shares	13	422	100	100
35 The CPAC Roof Tile Co., Ltd.	Concrete roof tiles	Nakorn Prathom/ Saraburi / Lamphun / Nakorn Sri Thamaraj / Chonburi / Khonkaen / Nakorn rajchsrima	66-2586-4032-4 66-2586-4037-9	66-2586-4308	Ordinary shares	2	211	100	100
36 SCG Concrete Roof (Vietnam) Co., Ltd.	Concrete roof tiles	Vietnam	(84650) 767-581-4	(84650) 767-580	**	-	235	100	100
37 SCG Roofing Philippines, Inc.	Concrete roof tiles	Philippines	(6343) 778-2942	(6343) 778-2934	Ordinary shares	206	153	100	100
38 SCG Concrete Roof (Cambodia) Co., Ltd.	Concrete roof tiles	Cambodia	(85523) 454-388	-	Ordinary shares	0.1	43	100	100
39 Thai Ceramic Roof Tile Co., Ltd.	Ceramic roof tiles	Saraburi	66-2586-5999	66-2586-5017	Ordinary shares	2	200	100	100
40 Cementhai Ceramics Co., Ltd.	Holding company	Bangkok	66-2586-3333	66-2586-2761	Ordinary shares	60	6,037	100	100
41 Cementhai Gypsum (Singapore) Pte. Ltd.	Holding company	Singapore	(65) 6297-9661	(65) 6297-9662	Ordinary shares	14	278	100	100
42 Cementhai Roof Holdings Philippines, Inc.	Holding company	Philippines	(6343) 778-2942	(6343) 778-2934	Ordinary shares	14	136	100	100

* Directly and indirectly holding through the Company, subsidiaries, associates, joint ventures and other companies.

** No issuance of share for the Limited Liability Company incorporated in Vietnam.

The capital contribution is as stipulated in the investment certificate of the invested company.



Name	Principal Business / Products	Location (Head Office / Factory)	Telephone	Facsimile	Type of shares	Number of paid-up shares (Million shares)	Issued and paid-up shares (Million Baht)	Direct / Indirect Company and Subsidiaries Holding (Percent)	Total Direct / Indirect Holding * (Percent)
43 Cementhai Ceramic (Singapore) Pte. Ltd.	Holding company	Singapore	(65) 6297-9661	(65) 6297-9662	Ordinary shares	37	1,280	100	100
44 Cementhai Ceramics Philippines Holdings, Inc.	Holding company	Philippines	(6343) 778-2942	(6343) 778-2934	Ordinary shares	174	192	100	100
45 Keating Capital Partners Pte. Ltd.	Holding company	Singapore	(65) 6338-1888	(65) 6337-5100	Ordinary shares	14	400	100	100
46 Kitchener Limited	Holding company	Hong Kong	(852) 2846-1888	(852) 2845-0476	Ordinary shares	16	452	100	100
47 Thai Ceramic Co., Ltd.	Floor and wall ceramic tiles	Bangkok	66-2586-4094-8	66-2587-8800	Ordinary shares	32	3,160	100	100
48 The Siam Ceramic Group Industries Co., Ltd.	Floor and wall ceramic tiles	Saraburi	66-3637-6400	66-3637-6422	Ordinary shares	96	960	100	100
49 Cementhai Home Services Co., Ltd.	Home-related services	Bangkok	66-2586-4111	66-2586-4017	Ordinary shares	5	115	100	100
50 Gemago Co., Ltd.	Marketing and sales of floor and wall ceramic tiles	Bangkok	66-2586-3333	66-2586-2761	Ordinary shares	0.5	45	100	100
51 PT SCG Lightweight Concrete Indonesia	Light-weight concrete	Indonesia	(6226) 7861-0360	(6226) 7861-0361	Ordinary shares	4	1,253	100	100
52 SCG Distribution Co., Ltd.	Holding company	Bangkok	66-2586-3333	66-2586-5454	Ordinary shares	220	12,150	100	100
53 SCG Cement-Building Materials Company Limited	Domestic distribution	Bangkok	66-2586-3333	66-2586-2961	Ordinary shares	21	524	100	100
54 SCG Trading Co., Ltd.	International trading	Bangkok	66-2586-3333	66-2586-2251	Ordinary shares	4	400	100	100
55 SCG Trading Australia Pty. Ltd.	International trading	Australia	(612) 9438-1225	(612) 9436-0195	Ordinary shares	0.2	5	100	100
56 SCG Trading Guangzhou Co., Ltd.	International trading	China	(86) 208-365-2559	(86) 208-365-2595	Ordinary shares	0.03	24	100	100
57 SCG Trading Hong Kong Limited	International trading	Hong Kong	(852) 2838-6456	(852) 3549-7219	Ordinary shares	45	220	100	100
58 SCG Trading Philippines Inc.	International trading	Philippines	(632) 501-8634	(632) 501-8635	Ordinary shares	0.5	38	100	100
59 SCG Singapore Trading Pte. Ltd.	International trading	Singapore	(65) 6295-3455	(65) 6292-5241	Ordinary shares	1	23	100	100
60 SCG Trading USA Inc.	International trading	USA	(1310) 323-2194 Ext.106	(1310) 324-9528	Ordinary shares	0.1	36	100	100
61 PT SCG Trading Indonesia	International trading	Indonesia	(6221) 350-9488	(6221) 352-0718	Ordinary shares	0.002	5	100	100
62 SCG Trading Vietnam Co., Ltd.	Logistics service, international trading and local distribution	Vietnam	(848) 3526-9001	(848) 3526-9009	**	-	64	100	100
63 SCG Trading Lao Co., Ltd.	International trading	Laos	(85621) 454-596-7	(85621) 454-598	Ordinary shares	0.02	11	100	100
64 SCG Marketing Philippines Inc.	International trading	Philippines	(632) 501-8634 (632) 501-8630	(632) 501-8635	Ordinary shares	0.4	30	100	100

* Directly and indirectly holding through the Company, subsidiaries, associates, joint ventures and other companies.

** No issuance of share for the Limited Liability Company incorporated in Vietnam.

The capital contribution is as stipulated in the investment certificate of the invested company.



Name	Principal Business / Products	Location (Head Office / Factory)	Telephone	Facsimile	Type of shares	Number of paid-up shares (Million shares)	Issued and paid-up shares (Million Baht)	Direct / Indirect Company and Subsidiaries Holding (Percent)	Total Direct / Indirect Holding * (Percent)
65 SCGT Malaysia Sdn. Bhd.	International trading	Malaysia	(603) 5632-0168	(603) 5632-0158	Ordinary shares	2	14	100	100
66 SCG Trading (Cambodia) Co., Ltd.	International trading	Cambodia	(85523) 990-401-5	(85523) 990-400	Ordinary shares	0.0001	1	100	100
67 SCG Trading Middle East Dmcc	International trading	United Arab Emirates	9714-5520-293	9714-5520-294	Ordinary shares	0.001	11	100	100
68 SCG Logistics Management Co., Ltd.	Logistics service	Bangkok	66-2586-3333	66-2586-2158	Ordinary shares	33	3,340	100	100
69 SCG Logistics Management (Lao) Co., Ltd.	Logistics service	Laos	(856) 41-9591-9652	-	Ordinary shares	0.004	0.4	100	100
70 SCG Logistics Management (Cambodia) Co., Ltd.	Logistics service	Cambodia	(85523) 966-206	(85523) 966-205	Ordinary shares	0.03	11	100	100
71 SCG Trading Services Co., Ltd.	Business services	Bangkok	66-2586-3333	66-2586-4445	Ordinary shares	0.1	10	100	100
72 Myanmar CBM Services Co., Ltd.	Business services	Myanmar	(951) 966-2014	(951) 966-2014	Ordinary shares	0.02	66	100	100
73 SCG Sourcing Co., Ltd.	Retail	Bangkok	66-2586-3333	66-2586-5625	Ordinary shares	1	100	100	100
74 SCG Experience Co., Ltd.	Exhibition center services and consultation	Bangkok	66-2101-9922	66-2101-9920	Ordinary shares	5	500	100	100
75 SCG Skills Development Co., Ltd.	Logistics skills development school for SCG business partners	Saraburi	66-3672-4377	66-3672-4378	Ordinary shares	0.1	5	100	100
76 Buu Long Industry & Investment Joint Stock Company	White cement	Vietnam	(8461) 396-5475	(8461) 396-5478	Ordinary shares	4	56	99	99
77 PT Semen Jawa	Cement	Indonesia	(6221) 350-9491	(6221) 350-9704	Ordinary shares	287	9,210	98	98
78 PT KIA Serpih Mas	Floor and wall ceramic tiles	Indonesia	(6221) 386-2322	(6221) 386-2253	Ordinary shares	3,143	1,528	97	97
79 PT KIA Keramik Mas	Ceramic roof tiles	Indonesia	(6221) 386-2322	(6221) 386-2253	Ordinary shares	2,926	2,162	96	96
80 PT Keramik Indonesia Assosiasi, Tbk.	Floor and wall ceramic tiles	Indonesia	(6221) 386-2322	(6221) 386-2253	Ordinary shares	14,929	5,603	96	96
81 Kampot Cement Co., Ltd.	Cement	Cambodia	(85523) 996-839	(85523) 996-849	Ordinary shares	13	4,275	95	95
82 PT Tambang Semen Sukabumi	Limestone Quarry	Indonesia	(6221) 350-9491	(6221) 350-9704	Ordinary shares	3	8	93	93
83 PT Kokoh Inti Arebama Tbk.	Building materials distribution	Indonesia	(6221) 350-6227	(6221) 350-1767	Ordinary shares	981	350	91	91
84 The Siam Sanitary Fittings Co., Ltd.	Faucets and fittings	Bangkok	66-2973-5101-7	66-2973-5108-9	Ordinary shares	2	200	91	91
85 Sosuco and Group (2008) Co., Ltd.	Marketing and sales of floor and wall ceramic tiles	Bangkok	66-2938-9833	66-2119-0847	Ordinary shares	1	50	90	90
86 Prime Group Joint Stock Company	Holding company	Vietnam	(84) 211-3888-987	(84) 211-3888-986	Ordinary shares	101	1,413	85	85

* Directly and indirectly holding through the Company, subsidiaries, associates, joint ventures and other companies.

Name	Principal Business / Products	Location (Head Office / Factory)	Telephone	Facsimile	Type of shares	Number of paid-up shares (Million shares)	Issued and paid-up shares (Million Baht)	Direct / Indirect Company and Subsidiaries Holding (Percent)	Total Direct / Indirect Holding * (Percent)
87 Prime Trading, Import and Export One Member Limited Liability Company	Marketing and sales of floor and wall ceramic tiles	Vietnam	(84) 211-3888-986	(84) 211-3898-276	**	-	420	85	85
88 Ceramic Research Institution	Research and development new technology, materials and products	Vietnam	(84) 211-3888-987	(84) 211-3888-986	**	-	7	85	85
89 Prime International Im-Ex & Servicing Trading Co., Ltd.	Marketing and sales of machine and spare part	Vietnam	(84) 43-7877-139	(84) 43-7877-138	**	-	6	85	85
90 Prime Ngoi Viet Joint Stock Company	Clay roof tiles	Vietnam	(84) 211-3597-696	(84) 211-3597-702	Ordinary shares	25	350	85	85
91 Prime Pho Yen Joint Stock Company	Floor ceramic tiles	Vietnam	(84) 280-3866-632	(84) 280-3866-474	Ordinary shares	15	210	85	85
92 Prime Yen Binh Joint Stock Company	Wall ceramic tiles	Vietnam	(84) 211-3866-152	(84) 211-3866-154	Ordinary shares	13	182	85	85
93 Prime Truong Xuan Joint Stock Company	Water heater and mechanical	Vietnam	(84) 211-3726-552	(84) 211-3721-786	Ordinary shares	6	84	85	85
94 Saraburirat Co., Ltd.	Concrete floor and wall tiles	Saraburi	66-2586-3333	66-2586-6800	Ordinary shares	1	96	83	83
95 Mariwasa-Siam Ceramics, Inc.	Floor and wall ceramic tiles	Philippines	(632) 717-6901	(6343) 778-2934	Ordinary shares	600	430	80	83
96 Prime Dai An Joint Stock Company	Exploration and processing material	Vietnam	(84) 211-3728-770	(84) 211-3726-547	Ordinary shares	3	35	81	81
97 SCG Myanmar Concrete and Aggregate Co., Ltd.	Ready-mixed concrete and related products	Myanmar	(84) 940-3723-905	-	Ordinary shares	0.0008	3	80	80
98 PT Surya Siam Keramik	Ceramic floor tiles	Indonesia	(6221) 5397-091	(6221) 5397-094	Ordinary shares	0.01	87	80	80
99 Myanmar CPAC Service Co., Ltd.	Ready-mixed concrete	Myanmar	(951) 681-351	(951) 681-351	Ordinary shares	4	148	80	80
100 Prime Dai Viet Joint Stock Company	Floor and wall ceramic tiles	Vietnam	(84) 211-3845-238	(84) 211-3844-464	Ordinary shares	13	182	77	77
101 Prime Thein Phuc Joint Stock Company	Exploration and processing material	Vietnam	(84) 54-3626-282	(84) 54-3752-292	Ordinary shares	5	70	77	77
102 Prime Phong Dien Joint Stock Company	Manufacture of material	Vietnam	(84) 54-3751-222	(84) 54-3751-222	Ordinary shares	3	35	77	77
103 Prime Dai Loc Joint Stock Company	Floor and wall ceramic tiles	Vietnam	(84) 510-3761-762	(84) 510-3761-763	Ordinary shares	30	414	76	76
104 CPAC Cambodia Co., Ltd.	Ready-mixed concrete	Cambodia	(85523) 356-677	-	Ordinary shares	0.2	5	75	75
105 Thai-German Ceramic Industry Public Company Limited	Floor and wall ceramic tiles	Saraburi	66-2790-9800	66-2790-9890	Ordinary shares	1,698	1,698	75	75
106 Green Conservation Solution Co., Ltd.	Renewable Energy / Refuse Derived Fuel (RDF)	Bangkok	66-2586-3333	66-2586-2979	Ordinary shares	2	50	74	74
107 Siam Sanitary Ware Co., Ltd.	Sanitary ware	Bangkok	66-2973-5040-54	66-2973-3470	Ordinary shares	1	60	71	71
108 Siam Sanitary Ware Industry Co., Ltd.	Sanitary ware	Saraburi	66-2973-5040-54	66-2973-3470	Ordinary shares	2	200	71	71
109 Siam Sanitary Ware Industry (Nongkhai) Co., Ltd.	Sanitary ware	Saraburi	66-2973-5040-54	66-2973-3470	Ordinary shares	2	160	71	71

* Directly and indirectly holding through the Company, subsidiaries, associates, joint ventures and other companies.

** No issuance of share for the Limited Liability Company incorporated in Vietnam.

The capital contribution is as stipulated in the investment certificate of the invested company.



Part 1 Business Operation / 1. Business Policies and Operation

The Siam Cement Public Company Limited

Name	Principal Business / Products	Location (Head Office / Factory)	Telephone	Facsimile	Type of shares	Number of paid-up shares (Million shares)	Issued and paid-up shares (Million Baht)	Direct / Indirect Company and Subsidiaries Holding (Percent)	Total Direct / Indirect Holding * (Percent)
110 Prime Tien Phong Joint Stock Company	Floor and wall ceramic tiles	Vietnam	(84) 211-3888-174	(84) 211-3887-747	Ordinary shares	12	168	71	71
111 Mawlamyine Cement Limited	Cement	Myanmar	(951) 966-2014	(951) 966-2014	Ordinary shares	0.1	1,631	70	70
112 Quality Construction Products Public Company Limited	Light-weight concrete	Phra Nakhon Si Ayutthaya	66-3522-1271	66-3522-1270	Ordinary shares	400	400	68	68
113 Q-Con Eastern Co., Ltd.	Light-weight concrete	Rayong	66-3865-0515	66-3895-6468	Ordinary shares	59	590	68	68
114 SCGT Automobile Co., Ltd.	Dealer	Bangkok	66-2586-1402	66-2586-2203	Ordinary shares	15	146	67	67
115 Prime Vinh Phuc Joint Stock Company	Floor and wall ceramic tiles	Vietnam	(84) 211-3866-637	(84) 211-3887-347	Ordinary shares	25	350	65	65
116 Guangxi SCG Logistics Co., Ltd.	Logistics service	China	66-2586-1590	-	Ordinary shares	-	34	55	55
117 Panel World Co., Ltd.	Cement-bonded particleboard	Samutsakorn	66-3447-2033-4	66-3447-1404	Ordinary shares	2	245	55	55
118 Sosooco Ceramic Co., Ltd.	Floor and wall ceramic tiles	Saraburi	66-3637-6300	66-3637-6309	Ordinary shares	0.008	800	54	54
119 SCG-Sekisui Sales Co., Ltd.	Construction & Sales of modular houses manufactured	Bangkok	66-2586-1323	66-2586-1481	Ordinary shares	8	825	51	51
120 Mingalar Motor Co., Ltd.	Dealer	Myanmar	(951) 514-940	-	Ordinary shares	0.006	141	50	50
121 PT Siam-Indo Gypsum Industry	Gypsum boards	Indonesia	(6221) 8832-0028	(6221) 8832-0036	Ordinary shares	0.03	306	50	50
122 PT Siam-Indo Concrete Products	Natural-fibre roofing sheets	Indonesia	(6226) 743-2140	(6225) 743-2149	Ordinary shares	0.03	446	50	50
123 Prime Dai Quang Joint Stock Company	Packaging	Vietnam	(84) 510-2471-993	(84) 510-3761-444	Ordinary shares	2	28	48	48
124 Kampot Land Co., Ltd.	Land investment	Cambodia	(85523) 996-839	(85523) 996-849	Ordinary shares	0.001	0.2	47	47
125 Prime Hao Phu Joint Stock Company	Exploration and processing material	Vietnam	(84) 27-3821-118	(84) 27-3821-118	Ordinary shares	3	35	41	41
Associates, Joint Ventures and Other Companies									
126 Global House International Company Limited	Holding Company	Bangkok	0-2586-3333	0-2586-5454	Ordinary shares	8	752	50	65
127 CMPI Land, Inc.	Land rental	Philippines	(632) 908-3720	(632) 750-6650	Ordinary shares	50	49	64	64
					Preferred shares	50	48		
128 SCG Nichirei Logistics Co., Ltd.	Cold Chain	Bangkok	66-2586-6610	66-2586-3136	Ordinary shares	6	570	51	51
129 Thai Prosperity Terminal Co., Ltd.	Shipping port	Samut Prakarn	66-2754-4501-9	66-2754-4513	Ordinary shares	1	63	50	50
130 Sekisui-SCG Industry Co., Ltd.	Manufacture and distribute of home components	Saraburi	66-3637-3478	66-3637-3480	Ordinary shares	23	2,325	49	49
131 Survey Marine Services Co., Ltd.	Land rental	Bangkok	66-2296-1490-2	66-2296-1494	Ordinary shares	0.4	37	48	48

* Directly and indirectly holding through the Company, subsidiaries, associates, joint ventures and other companies.



Name	Principal Business / Products	Location (Head Office / Factory)	Telephone	Facsimile	Type of shares	Number of paid-up shares (Million shares)	Issued and paid-up shares (Million Baht)	Direct / Indirect Company and Subsidiaries Holding (Percent)	Total Direct / Indirect Holding * (Percent)
132 Jumbo Barges and Tugs Co., Ltd.	Transportation by lighter	Bangkok	66-2872-3014-5	66-2872-3016	Ordinary shares	5	457	45	45
133 Noritake SCG Plaster Co., Ltd.	Manufacture and distribute plaster	Saraburi	66-3637-3578-82	66-3637-3577	Ordinary shares	4	405	40	40
134 Mariwasa Holdings, Inc.	Holding company	Philippines	(632) 717-6901	(6343) 778-2934	Ordinary shares	248	235	40	40
135 Green Siam Resources Corporation	Bailing business	Philippines	(632) 501-8631	(632) 501-8631	Ordinary shares	13	95	40	40
136 CMPI Holdings, Inc.	Holding company	Philippines	(632) 813-1666	(632) 813-1704	Ordinary shares	48	55	40	40
137 Maker-Manifatture Ceramiche S.r.l.	Ceramic tiles	Italy	(39) 0536-840218	(39) 0536-840879	**	-	803	33	33
138 Siam Global House Public Company Limited	Building materials and home improvement products distribution	Roi Et	66-4351-9597	66-4351-1492	Ordinary shares	3,484	3,484	30	30
139 Anhui Conch-SCG Refractory Co., Ltd.	Refractory	China	(86) 553-839-9857	(86) 553-839-9877	**	-	497	30	30
140 The Siam Gypsum Industry Co., Ltd.	Gypsum boards	Bangkok	66-2555-0055	66-2555-0001	Ordinary shares	2	150	29	29
141 The Siam Gypsum Industry (Saraburi) Co., Ltd.	Gypsum boards	Saraburi	66-3637-3500-9	66-3637-3510	Ordinary shares	5	470	-	29
142 The Siam Gypsum Industry (Songkhla) Co., Ltd.	Gypsum boards	Songkhla	66-7420-6000-5	66-7420-6006	Ordinary shares	1	120	-	29
143 PT M Class Industry	Clay roof tiles	Indonesia	(6202) 6743-6888	(6221) 539-7094	Ordinary shares	34	222	28	28
144 Pacific Asian Logistic Joint Stock Company	Logistic	Vietnam	(84) 43-7738-420	(84) 43-7738-421	Ordinary shares	2	28	21	21
145 Asia Cement Public Company Limited	Cement	Bangkok	66-2641-5600	-	Ordinary shares	778	4,671	10	10
146 Holcim Cement (Bangladesh) Limited	Cement	Bangladesh	(8802) 988-1002-3	-	Ordinary shares	0.1	4	10	10
SCG Chemicals									
Subsidiaries									
147 SCG Chemicals Co., Ltd.	Holding company	Bangkok	66-2586-4762	66-2586-5561	Ordinary shares	344	32,277	100	100
148 Thai Polyethylene Co., Ltd.	Polyethylene and polypropylene	Rayong	66-3868-3393-7	66-3868-3398	Ordinary shares	52	5,190	100	100
149 SCG Plastics Co., Ltd.	Trading	Bangkok	66-2586-6161	66-2910-4022	Ordinary shares	0.1	5	100	100
150 SCG Performance Chemicals Co., Ltd.	Trading	Bangkok	66-2586-4115	66-2586-3676	Ordinary shares	0.05	3	100	100
151 Rayong Engineering & Plant Service Co., Ltd.	Engineering and plant service	Rayong	66-3868-5040-8	66-3891-1309	Ordinary shares	0.04	2	100	100

* Directly and indirectly holding through the Company, subsidiaries, associates, joint ventures and other companies.

** No issuance of share for the Limited Liability Company incorporated in Italy and China.

The capital contribution is as stipulated in the investment certificate of the invested company.



Name	Principal Business / Products	Location (Head Office / Factory)	Telephone	Facsimile	Type of shares	Number of paid-up shares (Million shares)	Issued and paid-up shares (Million Baht)	Direct / Indirect Company and Subsidiaries Holding (Percent)	Total Direct / Indirect Holding * (Percent)
152 Protech Outsourcing Co., Ltd.	Engineering and plant service	Rayong	66-3868-2632-3	66-3868-2633	Ordinary shares	0.01	1	100	100
153 RIL 1996 Co., Ltd.	Industrial estate	Rayong	66-3868-9471-2	66-3891-1955	Ordinary shares	11	1,100	100	100
154 Texplot Co., Ltd.	Chemical technology licensing	Rayong	66-2586-6353	66-2586-2086	Ordinary shares	0.01	1	100	100
155 Vina SCG Chemicals Co., Ltd.	Holding company	Bangkok	66-2586-5435	-	Ordinary shares	33	1,369	100	100
156 SCG Chemicals (Singapore) Pte. Ltd.	Holding company	Singapore	(65) 6297-9661	-	Ordinary shares	38	804	100	100
157 Tuban Petrochemicals Pte. Ltd.	Holding company	Singapore	(65) 6297-9661	-	Ordinary shares	112	2,349	100	100
158 Hexagon International, Inc.	Holding company	USA	66-2586-4444	-	Ordinary shares	2	67	100	100
159 C4 Holding Pte. Ltd.	Holding company	Singapore	66-2586-1972	-	Ordinary shares	7	185	100	100
160 Norner Holding AS	Holding company	Norway	(47) 3557-8000	(47) 3557-8124	Ordinary shares	0.01	3	100	100
161 Norner AS	R&D service	Norway	(47) 3557-8001	(47) 3557-8125	Ordinary shares	0.001	0.1	100	100
162 Norner Research AS	Research Institute	Norway	(47) 3557-8002	(47) 3557-8126	Ordinary shares	0.001	0.1	100	100
163 Norner IP AS	Technology service and licensing	Norway	(47) 3557-8003	(47) 3557-8127	Ordinary shares	0.001	0.1	100	100
164 Norner Verdandi AS	Technology service and licensing	Norway	(47) 3557-8004	(47) 3557-8128	Ordinary shares	0.01	3	100	100
165 CO2 Technologies AS	Holding company	Norway	(47) 3557-8005	(47) 3557-8129	Ordinary shares	0.001	0.5	100	100
166 PT TPC Indo Plastic & Chemicals	PVC	Indonesia	(6231) 395-2945	(6231) 395-2944	Ordinary shares	0.03	1,020	96	96
167 Rayong Pipeline Co., Ltd.	Rights of pipe rack use	Rayong	66-3893-7065	66-3803-5381	Ordinary shares	4	200	92	92
168 Thai Plastic and Chemicals Public Company Limited	PVC	Bangkok	66-2827-7272	66-2827-7273	Ordinary shares	875	875	91	91
169 TPC Paste Resin Co., Ltd.	PVC paste resins	Bangkok	66-2827-7272	66-2827-7273	Ordinary shares	3	333	91	91
170 The Nawaplastic Industries (Saraburi) Co., Ltd.	PVC pipe and fittings	Bangkok	66-2586-3930-5	66-2586-4305	Ordinary shares	4	400	91	91
171 Nawa Plastic Industries Co., Ltd.	PVC pipe and PVC products	Bangkok	66-2586-3930-5	66-2586-2444	Ordinary shares	4	426	91	91
172 Nawa Intertech Co., Ltd.	Molding products	Rayong	66-3889-2190	66-3889-2244	Ordinary shares	0.4	40	91	91
173 Chemtech Co., Ltd.	Plastic compound	Vietnam	(84650) 3784-992	(84650) 3784-993	**	-	103	91	91
174 Total Plant Service Co., Ltd.	Holding company	Rayong	66-3868-7320-3	66-3892-5299	Ordinary shares	12	1,180	91	91
175 SCG Ico Polymers Company Limited	Rotomolding compound	Bangkok	66-2586-2006	-	Ordinary shares	4	380	87	87

* Directly and indirectly holding through the Company, subsidiaries, associates, joint ventures and other companies.

** No issuance of share for the Limited Liability Company incorporated in Vietnam.

The capital contribution is as stipulated in the investment certificate of the invested company.

Name	Principal Business / Products	Location (Head Office / Factory)	Telephone	Facsimile	Type of shares	Number of paid-up shares (Million shares)	Issued and paid-up shares (Million Baht)	Direct / Indirect Company and Subsidiaries Holding (Percent)	Total Direct / Indirect Holding * (Percent)
176 Map Ta Phut Tank Terminal Co., Ltd.	Tank and terminal service	Rayong	66-3868-9471-2	66-3891-1955	Ordinary shares	7	700	82	82
177 Minh Thai House Component Co., Ltd.	PVC doors and windows	Vietnam	(848) 3754-2989	(848) 3844-6073	**	-	36	73	73
178 Map Ta Phut Olefins Co., Ltd.	Raw materials for plastic resins	Rayong	66-3893-7000	66-3891-5310	Ordinary shares	225	22,520	55	67
179 Rayong Olefins Co., Ltd.	Raw materials for plastic resins	Rayong	66-3868-5040-8	66-3868-5036	Ordinary shares	108	10,820	50	67
180 Rayong Olefins (Singapore) Pte. Ltd.	Raw materials procurement	Singapore	(65) 6297-9661	-	Ordinary shares	0.02	0.5	67	67
181 Viet-Thai Plastchem Co., Ltd.	PVC compound	Vietnam	(84650) 3710-993	(84650) 3740-065	**	-	75	66	66
182 Alliance Petrochemical Investment (Singapore) Pte. Ltd.	Holding company	Singapore	(65) 6221-5318	-	Ordinary shares	46	1,881	65	65
183 TPC Vina Plastic and Chemicals Corporation Ltd.	PVC	Vietnam	(848) 3823-4730	(848) 3823-4725	**	-	1,013	64	64
184 Siam Stabilizers and Chemicals Co., Ltd.	Stabilizer	Rayong	66-3868-3451-3	66-3868-3449	Ordinary shares	190	190	55	55
185 Nawaplastic (Cambodia) Co., Ltd.	PVC pipe and fittings	Cambodia	(855) 2388-2072	(855) 2388-5172	Ordinary shares	1	45	55	55
186 Flowlab & Service Co., Ltd.	Calibration service	Rayong	66-3891-1321-2	66-3891-1381	Ordinary shares	0.02	4	51	51
Associates, Joint Ventures and Other Companies									
187 SCG Plastics (China) Co., Limited	Trading	Hong Kong	(852) 2544-9991	(852) 2544-9992	Ordinary shares	0.1	4	58	58
188 SCG Plastics (Shanghai) Co., Ltd.	Trading	China	(8621) 6888-6091	(8621) 6888-6092	**	-	25	-	58
189 Siam Mitsui PTA Co., Ltd.	Raw materials for polyester and PET	Rayong	66-3868-5100	66-3868-7333	Ordinary shares	48	4,800	49	50
190 SMH Co., Ltd.	Holding company	Rayong	66-3868-5100	-	Ordinary shares	1	60	50	50
191 Siam Styrene Monomer Co., Ltd.	Raw materials for polystyrene	Rayong	66-3868-3215-6	66-3868-3991	Ordinary shares	48	4,755	50	50
192 Siam Synthetic Latex Co., Ltd.	Synthetic latex	Rayong	66-3868-3215-6	66-3868-3991	Ordinary shares	59	5,789	50	50
193 Siam Polyethylene Co., Ltd.	Polyethylene	Rayong	66-3868-3215-6	66-3868-3991	Ordinary shares	45	4,455	49	50
194 Siam Polystyrene Co., Ltd.	Polystyrene	Rayong	66-3868-3215-6	66-3868-3991	Ordinary shares	10	995	50	50
195 MTP HPPO Manufacturing Co., Ltd.	Propylene oxide	Rayong	66-3868-3215-6	66-3868-3991	Ordinary shares	79	7,900	-	50
196 Rayong Terminal Co., Ltd.	Tank and terminal service	Rayong	66-3868-9471-2	66-2586-6220	Ordinary shares	14	1,325	-	50
197 PT Siam Maspion Terminal	Tank and terminal service	Indonesia	(6231) 395-2945-8	-	Ordinary shares	0.01	327	50	50
198 SD Group Service Co., Ltd.	Holding company	Bangkok	66-2365-7000	66-3868-3991	Ordinary shares	0.8	78	50	50

* Directly and indirectly holding through the Company, subsidiaries, associates, joint ventures and other companies.

** No issuance of share for the Limited Liability Company incorporated in Vietnam and China.

The capital contribution is as stipulated in the investment certificate of the invested company.



Name	Principal Business / Products	Location (Head Office / Factory)	Telephone	Facsimile	Type of shares	Number of paid-up shares (Million shares)	Issued and paid-up shares (Million Baht)	Direct / Indirect Company and Subsidiaries Holding (Percent)	Total Direct / Indirect Holding * (Percent)
199 Bangkok Synthetics Co., Ltd.	Raw materials for synthetic rubber	Bangkok	66-2679-5120	66-2679-5119	Ordinary shares	12	1,173	49	49
200 Thai MMA Co., Ltd.	Raw materials for acrylic	Rayong	66-3868-5040-8	66-2586-5393	Ordinary shares	56	5,590	46	47
201 Grand Siam Composites Co., Ltd.	Polypropylene compound	Rayong	66-3868-4241	66-3868-4255	Ordinary shares	0.6	64	46	46
202 Thai MFC Co., Ltd.	Melamine compound	Rayong	66-3868-4241	66-3868-4255	Ordinary shares	2	200	45	45
203 Siam Tohcello Co., Ltd.	Raw materials for packaging film	Rayong	66-3801-0500	66-3801-0506	Ordinary shares	0.6	592	45	45
204 Long Son Petrochemicals Co., Ltd.	Raw materials for plastic resins	Vietnam	(848) 3825-7226	(848) 3825-7268	**	-	4,408	44	44
205 Mehr Petrochemical Company (P.J.S.C.)	Polyethylene	Iran	(9821) 8850-0641	(9821) 8805-0642	Ordinary shares	0.03	1,755	39	39
206 PT Trans-Pacific Polyethylene Indonesia	Polyethylene	Indonesia	(6221) 574-5880	-	Ordinary shares	0.2	472	39	39
207 PT Trans-Pacific Polyethylindo	Polyethylene	Indonesia	(6221) 574-5880	-	Ordinary shares	0.07	337	39	39
208 Riken (Thailand) Co., Ltd.	PVC compound	Bangkok	66-2501-1054	66-2501-1198	Ordinary shares	1	120	32	32
209 PT Chandra Asri Petrochemical Tbk.	Raw materials for plastic resins	Indonesia	(6221) 530-7950	(6221) 530-8930	Ordinary shares	3,287	14,679	31	31
210 PT Styrimdo Mono Indonesia	Raw materials for polystyrene	Indonesia	(6221) 530-8505	(6221) 530-8506	Ordinary shares	0.3	10,093	-	31
211 GTC Technology US, LLC	Chemical technology licensing	USA	66-2586-4444	-	Ordinary shares	0.2	102	25	25
212 GTC Technology International, LP	Chemical technology licensing	USA	66-2586-4444	-	Ordinary shares	13	191	25	25
213 Tien Phong Plastics Joint Stock Company	PVC pipe	Vietnam	(843) 1385-2073	(843) 1364-0133	Ordinary shares	56	930	22	22
214 Thai PET Resin Co., Ltd.	PET resins	Rayong	66-3868-5900	66-3868-5999-609	Ordinary shares	9	900	20	20
215 Mitsui Advanced Composites (Zhongshan) Co., Ltd.	Polypropylene compound	China	(86) 760-533-2138	(86) 760-389-8880	Ordinary shares	15	596	20	20
216 Binh Minh Plastics Joint Stock Company	PVC pipe	Vietnam	(848) 3969-0973	(848) 3960-6814	Ordinary shares	45	682	19	19
217 PT Srihai Maspion Indonesia	Melamine compound	Indonesia	(6231) 891-3630	-	Ordinary shares	0.01	118	10	10
218 PT Trans-Pacific Polypropylene Indonesia	Polypropylene	Indonesia	(6221) 574-5880	-	Ordinary shares	0.07	220	10	10
219 PT Trans-Pacific Styrene Indonesia	Raw materials for polystyrene	Indonesia	(6221) 574-5880	-	Ordinary shares	0.1	314	10	10
220 PT Trans-Pacific Petrochemical Indotama	Raw materials for aromatics	Indonesia	(6221) 574-5880	-	Ordinary shares	15	8,931	5	5

* Directly and indirectly holding through the Company, subsidiaries, associates, joint ventures and other companies.

** No issuance of share for the Limited Liability Company incorporated in Vietnam.

The capital contribution is as stipulated in the investment certificate of the invested company.

Name	Principal Business / Products	Location (Head Office / Factory)	Telephone	Facsimile	Type of shares	Number of paid-up shares (Million shares)	Issued and paid-up shares (Million Baht)	Direct / Indirect Company and Subsidiaries Holding (Percent)	Total Direct / Indirect Holding * (Percent)
SCG Packaging Subsidiaries									
221 SCG Packaging Public Company Limited (Formerly : SCG Paper Public Company Limited)	Holding company	Bangkok	66-2586-3333	66-2586-2164	Ordinary shares	156	1,563	98	98
222 Siam Kraft Industry Co., Ltd.	Kraft paper	Bangkok	66-2586-3333	66-2586-2164	Ordinary shares	35	3,450	98	98
223 United Pulp & Paper Co., Inc.	Kraft paper	Philippines	(632) 870-0100	(632) 870-0409	Preferred shares	840	3,246	98	98
					Ordinary shares	141	1,082		
224 Paperlink Inter-Trade Corporation	Kraft paper	Philippines	(632) 870-0100	(632) 870-0409	Ordinary shares	0.1	1	98	98
225 InfoZafe Co., Ltd.	Shredding business	Bangkok	66-2586-3333	66-2586-2164	Ordinary shares	1	70	98	98
226 SCGP Excellence Training Center Co., Ltd.	Training and Seminar	Bangkok	66-2586-3876	66-2586-4507	Ordinary shares	1	49	98	98
227 SCG Paper Energy Co., Ltd.	Energy	Bangkok	66-2586-3333	66-2586-2164	Ordinary shares	2	71	98	98
228 Thai Cane Paper Public Company Limited	Kraft paper	Bangkok	66-2440-0707	66-2440-0717	Ordinary shares	358	3,583	93	93
229 Thai Paper Co., Ltd.	Printing and writing paper	Bangkok	66-2586-3333	66-2586-2164	Ordinary shares	35	3,500	75	75
230 Thai Union Paper Public Company Limited	Printing and writing paper	Samut Prakarn	66-2754-2100-10	66-2754-2118	Ordinary shares	43	430	75	75
231 Siam Cellulose Co., Ltd.	Bleached pulp	Bangkok	66-2586-3333	66-2586-2164	Ordinary shares	78	7,770	75	75
232 The Siam Forestry Co., Ltd.	Forestry	Bangkok	66-2586-3333	66-2586-2164	Ordinary shares	2	184	75	75
233 Panas Nimit Co., Ltd.	Forestry	Bangkok	66-2586-3333	66-2586-2164	Ordinary shares	0.02	2	75	75
234 Thai Panason Co., Ltd.	Forestry	Bangkok	66-2586-3333	66-2586-2164	Ordinary shares	0.02	2	75	75
235 Thai Panadorn Co., Ltd.	Forestry	Bangkok	66-2586-3333	66-2586-2164	Ordinary shares	0.02	2	75	75
236 Thai Panaram Co., Ltd.	Forestry	Bangkok	66-2586-3333	66-2586-2164	Ordinary shares	0.02	2	75	75
237 Suanpa Rungsaris Co., Ltd.	Forestry	Bangkok	66-2586-3333	66-2586-2164	Ordinary shares	0.02	2	75	75
238 Siam Panawes Co., Ltd.	Forestry	Bangkok	66-2586-3333	66-2586-2164	Ordinary shares	0.03	3	75	75
239 Thai Panaboon Co., Ltd.	Forestry	Bangkok	66-2586-3333	66-2586-2164	Ordinary shares	0.03	3	75	75
240 Thai Wanabhum Co., Ltd.	Forestry	Bangkok	66-2586-3333	66-2586-2164	Ordinary shares	0.03	3	75	75

* Directly and indirectly holding through the Company, subsidiaries, associates, joint ventures and other companies.



		Location (Head Office / Factory)	Telephone	Facsimile	Type of shares	Number of paid-up shares (Million shares)	Issued and paid-up shares (Million Baht)	Direct / Indirect Company and Subsidiaries Holding (Percent)	Total Direct / Indirect Holding * (Percent)
Name	Principal Business / Products								
241	Phoenix Pulp & Paper Public Company Limited	Bleached pulp	Khonkaen	66-2586-3333	66-2586-2164	Ordinary shares	211	2,108	75
		Printing and writing paper			Preferred shares	10	98		
242	Phoenix Utilities Co., Ltd.	Utilities	Khonkaen	66-2586-3333	66-2586-2164	Ordinary shares	15	1,500	75
243	Thai Containers Group Co., Ltd.	Corrugated boxes	Bangkok / Pathumthani / Samut Prakarn / Ratchaburi	66-2586-5991	66-2586-4723	Ordinary shares	14	1,384	69
244	Thai Containers Khonkaen Co., Ltd.	Corrugated boxes	Khonkaen	66-2586-3333	66-2586-2164	Ordinary shares	0.2	150	69
245	Thai Containers Rayong Co., Ltd.	Corrugated boxes	Rayong	66-2586-3333	66-2586-2164	Ordinary shares	1	650	69
246	Vina Kraft Paper Co., Ltd.	Kraft paper	Vietnam	(848) 268-0240-2	(848) 268-0239	**	-	6,069	69
247	TCG Rengo (S) Limited	Corrugated boxes	Singapore	(65) 6661-7325	(65) 6265-3144	Ordinary shares	2	56	69
248	New Asia Industries Co., Ltd.	Corrugated boxes	Vietnam	(848) 3729-4160	(848) 3729-3028	**	-	345	69
249	Alcamax Packaging (Vietnam) Co., Ltd.	Corrugated boxes	Vietnam	(84650) 374-303-1	(84650) 782-816	**	-	607	69
250	AP Packaging (Hanoi) Co., Ltd.	Corrugated boxes	Vietnam	(84320) 375-386-2	(84320) 752-868	**	-	248	69
251	Packamex (Vietnam) Co., Ltd.	Flexible Packaging	Vietnam	(848) 729-1030	(848) 729-1031	**	-	220	69
252	PT Primacorr Mandiri	Corrugated boxes	Indonesia	(6221) 596-2345	(6221) 596-2000	Ordinary shares	0.1	294	62
253	PT Indoris Printingdo	Corrugated boxes	Indonesia	(6221) 596-0772-3	(6221) 596-0774 (6221) 596-3076	Ordinary shares	0.02	55	62
254	TC Flexible Packaging Co., Ltd.	Holding company	Bangkok	66-2586-5991	66-2586-4723	Ordinary shares	20	1,877	52
255	Dyna Packs Co., Ltd.	Corrugated boxes	Samutsakorn	66-2810-9346-7	66-2810-9103	Ordinary shares	1	90	52
256	Orient Containers Co., Ltd.	Corrugated boxes	Samutsakorn	66-3488-3422-4	66-3488-3421	Ordinary shares	26	260	52
257	D-In-Pack Company Limited	Corrugated boxes	Nakhonpathom	66-3498-1401-4	66-3498-1406-7	Ordinary shares	0.005	50	52
258	Tawana Container Co., Ltd.	Corrugated boxes	Samut Prakarn	66-2324-0781	66-2324-0079	Ordinary shares	3	300	50
259	Tin Thanh Packing Joint Stock Company	Flexible Packaging	Vietnam	(84) 72-3779-747	(84) 72-3779-750	Ordinary shares	10	158	41
260	Prepack Thailand Co., Ltd.	Flexible Packaging	Samut Songkhram	0-3475-1186-7	0-3475-2634	Ordinary shares	3	322	37
			Rayong	0-3891-7004	-	Preferred shares	1	90	

* Directly and indirectly holding through the Company, subsidiaries, associates, joint ventures and other companies.

** No issuance of share for the Limited Liability Company incorporated in Vietnam.

The capital contribution is as stipulated in the investment certificate of the invested company.



Name	Principal Business / Products	Location (Head Office / Factory)	Telephone	Facsimile	Type of shares	Number of paid-up shares (Million shares)	Issued and paid-up shares (Million Baht)	Direct / Indirect Company and Subsidiaries Holding (Percent)	Total Direct / Indirect Holding * (Percent)
Associates and Other Companies									
261	Siam Toppan Packaging Co., Ltd.	Offset-printed cartons	Samut Prakarn	66-2709-3110-7	66-2324-0336	Ordinary shares	5	500	48
262	P&S Holdings Corporation	Holding company	Philippines	(632) 870-0100	(632) 870-0409	Ordinary shares	28	263	39
263	Siam Nippon Industrial Paper Co., Ltd.	Specialty paper	Bangkok	66-2586-3333	66-2586-2164	Ordinary shares	11	1,100	34
264	Thai British Security Printing Public Company Limited	Securities document	Samut Prakarn	66-2754-2650-8	66-2384-0917	Ordinary shares	11	110	18
265	Thai British Security Printing Overseas Co., Ltd.	Holding company	Samut Prakarn	66-2380-1320	66-2380-1326-27	Ordinary shares	0.1	1	18
266	Rengo Packaging Malaysia Sdn. Bhd.	Corrugated boxes	Malaysia	(603) 5636-3610	(603) 5636-3621	Ordinary shares	15	804	17
267	Thai British DPost Co., Ltd.	Digital printing	Samut Prakarn	66-2661-5215	66-2661-9580	Ordinary shares	3	34	9
Other Subsidiaries									
268	Cement Thai Holding Co., Ltd.	Holding company	Bangkok	66-2586-2104	66-2586-2008	Ordinary shares	0.01	1	100
269	Cement Thai Property (2001) Public Company Limited	Holding company	Bangkok	66-2586-2104	66-2586-2008	Ordinary shares	7	72	100
270	Property Value Plus Co., Ltd.	Land business and land lease service	Bangkok	66-2586-2104	66-2586-2008	Ordinary shares	8	820	100
271	SCG Accounting Services Co., Ltd.	Accounting, financial and tax services	Bangkok	66-2586-3333	66-2586-2398	Ordinary shares	0.5	5	100
272	SCG Legal Counsel Limited	Legal consultant	Bangkok	66-2586-5777	66-2586-2976	Ordinary shares	0.2	15	100
273	CTO Management Co., Ltd.	Marketable securities investment	Bangkok	66-2586-3333	66-2587-2157	Ordinary shares	25	380	100
274	Cement Thai Captive Insurance Pte. Ltd.	Insurance	Singapore	66-2586-3333	66-2587-2157	Ordinary shares	0.3	34	100
275	Siam Innovation Product and Solution Co., Ltd. (Formerly : Siam Eco Energy Business Co., Ltd.)	Holding company	Bangkok	66-2586-3333	66-2587-2157	Ordinary shares	0.5	13	100
276	SCG Learning Excellence Co., Ltd.	Training service	Bangkok	66-2586-3333	66-2586-2684	Ordinary shares	0.2	20	100
277	SCG Vietnam Co., Ltd.	Management consulting service	Vietnam	(848) 3526-9011-13	(848) 3526-9014	**	-	16	100
278	PT SCG Indonesia	Management consulting service	Indonesia	(6221) 350-9491	(6221) 352-0718	Ordinary shares	0.1	26	100
279	Siam GNE Solar Energy Co., Ltd.	Electricity	Bangkok	66-2586-5684	66-2586-6284	Ordinary shares	0.2	16	50

* Directly and indirectly holding through the Company, subsidiaries, associates, joint ventures and other companies.

** No issuance of share for the Limited Liability Company incorporated in Vietnam.

The capital contribution is as stipulated in the investment certificate of the invested company.



Name	Principal Business / Products	Location (Head Office / Factory)	Telephone	Facsimile	Type of shares	Number of paid-up shares (Million shares)	Issued and paid-up shares (Million Baht)	Direct / Indirect Company and Subsidiaries Holding (Percent)	Total Direct / Indirect Holding * (Percent)
Associates and Other Companies									
280 Siam Kubota Corporation Co., Ltd.	Agricultural machinery	Pathumthani	66-2909-0300-1	66-2909-1698	Ordinary shares	31	2,739	40	40
281 Siam Kubota Metal Technology Co., Ltd.	Cast iron	Chachoengsao	66-3885-5115	66-3885-5110	Ordinary shares	9	900	-	40
282 Siam Kubota Leasing Co., Ltd.	Leasing	Pathumthani	66-2909-0300	66-2909-1697	Ordinary shares	80	2,000	-	40
283 Maxion Wheels (Thailand) Co., Ltd. (Formerly : Siam Lemmerz Co., Ltd.)	Aluminium alloy wheels	Saraburi	66-3637-3309-21	66-3637-3312-3	Ordinary shares	0.1	126	30	30
284 Siam AT Industry Co., Ltd.	Automotive parts	Chonburi	66-3845-4266-8	66-3845-4266	Ordinary shares	2	240	30	30
285 Thai Engineering Products Co., Ltd.	Automotive parts	Pathumthani	66-2529-3518-22	66-2529-1677	Ordinary shares	0.9	85	29	30
286 The Nawaloha Industry Co., Ltd.	Cast iron	Saraburi	66-3633-6531-4	66-3622-3209	Ordinary shares	3	300	30	30
287 Aisin Takaoka Foundry Bangpakong Co., Ltd.	Cast iron	Chonburi	66-3845-4671-7	66-3845-4670	Ordinary shares	5	475	30	30
288 Muang Thong United Co., Ltd.	Football team	Bangkok	66-2508-8100	66-2508-3369	Ordinary shares	3	233	30	30
289 The Siam Nawaloha Foundry Co., Ltd.	Cast iron	Saraburi	66-3628-8300	66-3628-8309	Ordinary shares	3	308	20	25
290 Musashi Auto Parts Co., Ltd.	Motorcycle transmission parts	Pathumthani	66-2529-1753-6	66-2529-4554	Ordinary shares	0.2	200	21	21
291 Lysando AG	Licensing Technology	Liechtenstein	(423) 262-5753	(423) 262-5752	Ordinary shares	1	39	20	20
292 IT One Co., Ltd.	Technical services	Bangkok	66-2271-5111	66-2271-5112	Ordinary shares	0.8	80	20	20
293 Toyota Motor Thailand Co., Ltd.	Automotives	Samut Prakarn	66-2386-1000	66-2386-1883	Ordinary shares	8	7,520	10	10
294 Siam Yamato Steel Co., Ltd.	Structural steel	Rayong	66-3868-3723-30	66-3868-3200	Ordinary shares	30	3,000	10	10
295 Siam Toyota Manufacturing Co., Ltd.	Automotive engines and automotive parts	Chonburi	66-3821-3451-5	66-3874-3310	Ordinary shares	29	2,850	4	4

* Directly and indirectly holding through the Company, subsidiaries, associates, joint ventures and other companies.

2. Operation of Key Business Units

Revenue Structure for Year 2015

	(in Million Baht)				
	Revenue from sales	Other Income	Total Revenue	Sale breakdown (%)	Equity in Associates *
SCG Cement-Building Materials	178,988	1,897	180,885	37.76	604
SCG Chemicals	200,433	1,522	201,955	44.90	7,199
SCG Packaging	70,907	691	71,598	15.92	(91)
Other	83	6,308	6,391	1.42	2,586
Total Consolidated	439,614	10,134	449,748	100.00	10,293

Remark: Financial figures are classified according to business unit before intersegment elimination, as disclosed in note 25 to the financial statements pages 193-197 of the Annual Report 2015.

*share of profit of associates and jointly-controlled entities recognized by using equity method.

Key operations of each business unit

SCG Cement-Building Materials

SCG Cement-Building Materials Co., Ltd, (SCG CBM) business consists of cement, building materials, and distribution, focuses on developing High Value Added Products & Services (HVA) and aims to be the market leader in both domestics and ASEAN. The main products in the company are cement product group, building material product group, and ceramic product group.

Key Information			
Capacity	<ul style="list-style-type: none"> Grey Cement (Thailand) 23 million tons per year Grey Cement (Outside Thailand) 3.7 million tons per year Ready-Mixed Concrete 726 plants Roof Products 98 million Sq. M. per year Ceiling/Board/Wood substitutions 113 million Sq. M. per year Floor and Wall Ceramic tile 225 million Sq. M. per year 		
Brand	<ul style="list-style-type: none"> Cement: Elephant, Tiger, SCG and K-Cement Brands Mixed Cement: Tiger, K-Cement Brands Mortar Cement: Tiger, Mortar, SCG Brands Decorative Cement: Tiger Decor, SCG Brands White Cement: Tiger and SCG Brands Ready-Mixed Concrete: CPAC, Jayamix and SCG Brands 		

Key Information	
	<ul style="list-style-type: none"> • Fireclay Bricks and Special Refractory: SRIC Brand • Aerated Lightweight Concrete: Q-CON and SCG Brands • Roofing Products: Elephant and SCG Brands • Ceiling/Board/Wood Substitutions: Elephant and SCG Brands • Concrete Blocks, Concrete Floor Tiles, and Precast Concrete Walls: Elephant Brand • Ceramic Floor and Wall Tiles: COTTO, SGI Tiles, SOSUCO, CAMPANA, Prime, KIA, and Mariwasa Brands • Sanitary, Bath Room, and Kitchen: COTTO Brand • Building Material Outlet: SCG HOME SOLUTION and HOME MART • Product Outlet and Solution Center for Ceramic Floor, Wall Tiles, Sanitary, Bath Room, and Kitchen - COTTO Brand: COTTO Studio • Flagship Retail Store for SCG: SCG Experience • Logistic Service: SCG Logistics • Import/Export Service : SCG Trading
Strengths	<ul style="list-style-type: none"> • Major integrated producer of cement and building material products in ASEAN • The largest production capacity in floor/wall ceramic tiles in the world • Embedded sustainable development philosophy as part of company policy and operations • Rigorous in-house R&D efforts to create innovative products and services
Major Business Policy	<ul style="list-style-type: none"> • Expand business in ASEAN in order to be a regional leader • Maintain price and market stability as well as enhance its domestic market leadership • Develop high value added products and services (HVA) • Continuously conserve natural resources and environment and join social development program with local community for sustainable development

2.1 Product or Service Features

Products and services are primarily classified by companies as follows:

Cement Group

1. Grey Cement
2. White Cement

3. Mortar Cement
4. Ready Mixed-Concrete
5. Fireclay Bricks and Special Refractory
6. Aerated Lightweight Concretes (ALC)

Building Material Group

7. Roof Tile (Fiber Cement Roof, Concrete Roof, Ceramic Roof, Metal Roof, Clay Roof, and Glasolit Roof) , Roof Truss and Accessories
8. Ceiling, Wall, Floor, Fiber Cement Board and Cement Board Products
9. Wood Substitute Products
10. Landscape Products (such as Paving Block, Paving Tile, Wall Tile and Fence)
11. Reinforcing Bar
12. Heat Insulator, Acoustic Insulator

Ceramic Group

13. Floor and Wall Tiles

Other Products and Services

14. Logistic Service
15. Import/Export Service
16. Disposal of Industrial Waste
17. Other Products and Services such as Insulation, Roofing Center, and Home Product and Service

2.2 Market and Competition

A. Policy and Market Features of Main Products and Services

- Policy and Market Features

1) Competitive Strategy

- The business rigorously creates value to customers through high value added products and services (HVA) to create differentiation and response to customer needs such as continuing improvement, becoming trend settler, and developing eco-friendly products to reduce natural resource consumption. In addition, SCG Cement is the only Thai cement company that has its own Research and Development unit that allows SCG Cement to efficiently develop its goods and services to serve the needs of each customer segment such as SCG Hybrid Cement (Eco-friendly), Special Tiger Cement, Tiger Super Cement, SCG Transformer Cement, SCG Marine Cement, Portland Composite Cement, Tiger Crack Resistant Mortar Cement, SmartWood with advanced bonding technology, Thai

Classic Klet Pla Ceramic Tile, COTTO Digital, The Convenic Toilet Seat and Cover, and Wash basin Tunio serie.

- The business has policy to continuously increase production efficiency and implement cost reduction, for example, energy cost reduction, raw material consumption reduction, and waste reduction. Furthermore, SCG CBM also has its own technical teams to provide customers professional advice and recommendation about production process, quality control, and cost reduction as well as suggest possible solution of any related problems. Therefore, customers can promptly and directly notify their problems to the Customer Complaint Call Center.
- The business gives priority to social and environment by providing many marketing and social activities such as “Membership Program for Contractors”, education activity to improve skills and enhance living standard of local contractors and “Project to Educate Architecture Students”, education activity for increase knowledge about building materials and construction technology.

2) Customer Features and Target Groups

- Cement Product: cement is sold to affiliate companies such as ready mixed concrete, concrete roof, board, etc. Besides SCG customers, cement is sold to dealers, major concrete building material producer, and major contractors.
- Building Material Products: target groups are classified by price, and group of customers to match with product categories, designs, and customer behavior in each area.
- Ceramic products can be classified into two customer segments: medium-to-low and medium-to-high segments.

3) Channel of Distribution

- Domestic Distribution: the business provides strong domestic distribution network through 500 dealers nationwide through sales campaign and activities. In project segment, the business has enhanced customer's efficiency of product utilization with project management system “One Stop Solution”. The segment that needs consulting, designing, price estimation, and service installation, is served by the One-Stop Shop and One-Stop Service dealer called SCG Home Solution and COTTO Studio.
- Regional Distribution: SCG Trading, SCG's subsidiary, is the SCG exporting agent to other countries. The export will focus on needs of destination customer or dealer in each country. For strategic countries, for example Indonesia, PT KOKOH Inti Arebama Tbk,

SCG subsidiary, manages distribution network with more than 2,700 dealers throughout Indonesia.

- Distribution in other regions, SCG Trading, SCG's subsidiary, is the SCG exporting agent to other countries. The export will focus on needs of destination customer or dealer in each country.

In addition, SCG CBM focuses on increasing efficiency of SCG Dealers as follow:

- Wholesales channel: The business increases dealers' capabilities through Loyalty program "Chang Family" by supporting and co-implementing system of cost reduction, warehouse and logistics management.
- Project channel: the business strengthens project channel through advance information technology (IT) and supply chain management to connect all operation and serve customer needs.
- Retail Channel: The business develops network sustainably through SCG Home solution in order to response home owner's requirements such as designing, price estimation, material selection, service installation, and guarantee. The business also expands network through Loyalty program "Chang Puean Chang", educate installers to improve their professional skills and through SCG contact center to provide solution and consultation directly to home owners.

- **Policy and Market Features of Main Products and Services**

Presently, the business has five grey cement plants in Thailand: 1) Ta Luang Cement Plant, 2) Khao Wong Cement Plant, and 3) Kaeng Khoi Cement Plant (Saraburi), 4) Thung Song Cement Plant (Nakorn Sri Thammarat), 5) Lampang Cement Plant (Lampang) with the production capacity 23.2 million tons with the highest market share compared to other domestic cement producers. For building materials, the business has factories, producing roof, ceiling, and board, in Saraburi, Nakhon Prathom, Lampang, Lamphun, Chonburi, Khonkaen, Nakhon Ratchasima, and Nakhon Si Thammarat. Recently, SCG CBM rigorously expands marketing activities of cement and building materials products in 5 countries in ASEAN: Indonesia, Myanmar, Cambodia, Vietnam, and Philippines by focusing on strengthening distribution channels. Also, there are an investment on cement production capacity expansion through simultaneously setting up new plants in Cambodia, Indonesia, Laos, and Myanmar.

For Ceramic business, there is floor and wall tiles plant in domestic and regional with total capacity of 225 million Sq.meter per year : 1) Saraburi, Thailand 2) Philippines 3) Indonesia and 4) Vietnam. Furthermore, the sanitary ware and fitting business is still being leader in domestic

market. SCG emphasizes to continuously develop Sanitary ware and fitting business for being well known in global market in the future. The innovative products launched to the market as followings;

- 1.) Continue expanding production capacity of SCG Hybrid Cement (Eco-Friendly) which has well accepted from customers. The SCG Hybrid Cement is the 1st brand in Thailand which has been certified by Thai Industrial Standards Institute (IS 2594-2556). With the same application as Basic Portland Cement in Concrete work, Elephant Hybrid Cement has the special feature of reducing CO2 emissions in the manufacturing process, a major cause of global warming. Furthermore, it is ideal for structures that demand strength and durability.
- 2.) Continue expanding production capacity of Mortar under Tiger Brands to regional areas. The business has set up and operated new plant in Chonburi (East) and has further expanded its production capacity to Northern and North eastern in order to capture rising demand growth. The business also creates competitive advantage over competitors through Silo & Spraying Service System by increasing capacity of Silo and service teams and expands to big cities nationwide in order to provide feature of convenience and solve labour shortage problem.
- 3.) Increase production capacity of Tiger Cement under brand “Tiger Cement Decorative”, which is for floor and wall decorative to serve customers that need unique and outstanding covering cement decorative.
- 4.) Produce special Mortar for Cast in Place. This special Mortar is used for the panel work in high rise building or single house with fast, convenience, and strong benefits.
- 5.) Produce CPAC Super Plus, new ready mixed concrete to serve customers that require better flow ability and do not want to mix more water in the workplace.
- 6.) Research and develop SCG Eldercare Solution, the innovative solutions and systems for housing and commercial building for the elderly. This new line of solutions extends from bathroom products to encompass entire housing solutions to ensure convenience, safety, and wellness for elderly. Examples include automatic night light system, shock absorption floor, mobility aid for use inside and outside the house, and healthy wall material that absorbs odor and moisture to maintain air freshness in the house.
- 7.) Research and develop innovations in cement and mortar by manufacturing the Platinum Formula Mortar, using flexible molecule technology that reduces the risk of cracking, thereby minimizing the cracks in the masonry wall and the need for repairs.

- 8.) Research and develop digital printing technology on fiber-cement board, made by an extrusion process, to give the board a beautiful texture similar to those of natural materials but with a stronger, more durable, and longer use, both interior and exterior.
- 9.) Research and develop 3D printing technology on cement including both powder bed printing technology and extrusion printing technology to facilitate construction, reduce waste at the sites, reduce labor, and accommodate the building of free form or architectural designs that cannot be achieved by conventional construction.
- 10.) Research and develop wide-ranging innovative prefabrication solutions with excellent quality and ease of use. For instance, the precast concrete panel provides added value with the smooth surface to minimize masonry and plastering and special formula non-shrink grout that prevents leakage between panel joints.
- 11.) Research and develop a wide array of interior wall systems to match various application needs and construction demands. Examples are Walli-T, the cast in place wall system that offers excellent strength and minimum panel joints, and the S Wall system that features lightweight, strength, and quick installation. They are ideal for today's construction industry faced with a persistent labor shortage.

- **Domestics Market and Competition**

In 2015, domestic demand for cement remained at the same level as in the previous year, largely attributable to government investments. Whereas cement demand from household users and the private sector retracted, exports saw modest growth compared to last year.

Domestic demand for building products continued to slow down due to the lack of consumer confidence and declining purchasing power, triggered by sagging prices of agricultural commodities and prolonged drought. Nonetheless, SCG CBM managed to maintain its leadership status in the building product business through the continued development of high value-added products and services to better accommodate consumer needs.

SCG CBM focuses on maintaining its market leadership by creating value to customers by rigorous continuing enhances product quality and new product and service development. And the business sustains leadership by building good relationship with customers as well as implementing cost reduction program in order to be more competitive. In addition, we have also improved and expanded distribution network nationwide to increase points of purchase to facilitate our customers' accessibility to our products.

- **Regional Market and Competition**

Our business in ASEAN have been expanding with the growth of cement and building material market in regional countries. In Cambodia and The Philippines, the growth mainly came from government spendings in infrastructure projects in Cambodia such as the highway connecting routes for Southern Economic Corridor in Mekong region, and the government's policy to promote residential projects in The Philippines. In Myanmar and Vietnam, the investment in private sector such as factory, resident, hotel, and commercial building has been growing. In Indonesia, however, construction market has slowed down because many government's projects have been delayed.

2.3 Products and Services Procurement

A) Product Procurement Feature

Type	Number of Sellers	Procurement method	Local / Foreign	Remark
Main Raw Materials				
Limestone	-	-	100% / 0%	Own supply sources and self-operated
Shale	-	Long-term contracts with external contractors	100% / 0%	Own supply sources. Long-term contracts with contractors
Sand	~ 3	Occasional purchase with long - term suppliers	100% / 0%	Own supply sources kept as reserve Currently buy from external sellers
Clay	~ 3	Long-term contracts with external contractors	100% / 0%	Own supply sources. Currently have long-term contracts with contractors
Copper Slag	1	3-year contracts with external suppliers	0% / 100%	Buy from external suppliers
Gypsum	~ 7	Long-term contracts with suppliers and partly operate from own sources	100% / 0%	Currently buy from external sellers and partly from own sources
Kraft Paper	5	Yearly contracts with SCG affiliates and international suppliers	20% / 80%	Currently buy international suppliers and partly from domestics suppliers
Fuel				
Lignite	~ 2	Long-term contracts with suppliers	100% / 0%	Self-operate from its supply sources and buy from external suppliers
Petroleum Coke	~ 1	Occasional purchase	0% / 100%	Buy from external suppliers

Type	Number of Sellers	Procurement method	Local / Foreign	Remark
Coal	~ 6	Long-term contracts with suppliers and occasional purchase	0% / 100%	Buy from external suppliers
Bunker Oil	2	Occasional purchase.	100% / 0%	Buy from external suppliers
Biomass	15	Long-term contracts with suppliers and occasional purchase	30% / 70%	Buy from external suppliers

For other materials, the business has long-term contracts with many raw material producers both domestics and international. The company will not depend too much on any single supplier to prevent shortage of raw materials.

B) Environment Protection

SCG Cement-Building Materials has enacted environment policies by applying Sustainable Development in business practices as follows:

- 1.1) The businesses operates under the environmental management system. At the same time, we are responsible for stakeholders, especially communities within the vicinity of our plants, in order to promote the quality of life and create a sustainable relationship. Consequently, the company has been awarded from external organizations below.
 - We are awarded Green Industry Level 5 Certificate, also known as 'Green Network', in the total of 9 certificates which are the Siam Cement (Lampang) Co., Ltd. for 2 certificates, the Siam Cement (Ta Luang) Co., Ltd. for 3 certificates, the Siam Cement (Kaeng Khoi) Co., Ltd. for 2 certificates and the Siam Cement (Thung Song) Co., Ltd. for 2 certificates.
 - We are awarded Green industry Level 4 Certificate, also known as 'Green Culture', in the total of 5 certificates which are The Siam Fibre-Cement Co., Ltd. - Saraburi plant, The Siam Fibre-Cement Co., Ltd. - Ta Luang plant, The Fibre-Cement Products (Lampang) Co., Ltd., The Siam Ceramic Group Industries Co., Ltd. and Siam Sanitary Ware Industry Co., Ltd.
 - CPAC (Ready Mix) plants are awarded CSR-DIW Award 2015 for 12 plants, CSR-DIW Continuous Award 2015 for 11 plants, Outstanding Community Social Plan Certificate and Outstanding Community Economic Plan Certificate.
 - We are awarded Carbon Footprint for Organization (CFO) for the Siam Cement (Ta Luang) Co., Ltd. - Khao Wong Plant, the Siam Cement (Thung Song) Co., Ltd. and Siam Mortar Co., Ltd. - Kaeng Khoi Plant.

- We are awarded Thailand Energy Award 2015 for the SCG SCG Logistics Management Co., Ltd. in the energy conservation of transport sector and Thai-German Ceramic Industry Co., Ltd. in the personnel of energy management sector.
- 1.2) Collaborated with the international organizations such as the World Business Council for Sustainable Development - Cement Sustainability Initiatives (WBCSD CSI).
 - 1.3) Defined SCG Green Port Standard encompassing loading and discharging, shipping, and storing of coals and cement clinker to meet the accepted safety and environmental management standards.
 - 1.4) Stressed the importance of the sustainable management of resources and the environment. For instance, CPAC converted the concrete buildups inside the mixer drum of a ready mixed concrete truck into materials for use in public works as well as recycling the recovered sand and aggregates. Also the CPAC Roof Tile Co.,Ltd used limestone tailings, by-products of limestone mining in the cement industry, for the 20% sand substitute.
 - 1.5) We enhanced the efficiency of energy use and reduced GHG emission by replacing the wet grinding process with dry process (dry grinding) at the Thai-German Ceramic Industry Co., Ltd. thus reducing energy cost by 121,092 Gigajoules per year, equal to a decrease of 67,933 tons CO₂ per year without sacrificing the quality of the tiles.
 - 1.6) Set up plans to handle risks from drought at the plants by monitoring the water levels of the plants' raw water sources as well as public water sources on a daily basis while, at the same time, securing more water reserves. For example, The Siam Cement (Kaeng Khoi) Co.,Ltd turned its exhausted shale mine pits into ponds to collect and store rainwater.
 - 1.7) Improved the control system of fugitive cement dust from the main stacks at The Siam Cement (Thung Song) Co.,Ltd. by replacing the electrostatic precipitators (ESPs) with new bag filters. At The Siam Cement (Kaeng Khoi) Co.,Ltd., on the other hand, the electrostatic precipitators were replaced with hybrid filters that combine ESP and bag filter technology in one.
 - 1.8) Developed various SCG eco value-certified products including:
 - K-Cement reduces GHG emissions by at least 20 kg CO₂/ton cement. It is produced at Kampot Cement in Cambodia.
 - K-Plastering Cement reduces GHG emissions by at least 30 kg CO₂/ton cement. It is produced at Kampot Cement in Cambodia.
 - Paving blocks integrate Cool Plus technology and use at least 10% recycled material in the manufacturing process.

- 1.9) We continuously enhance the effectiveness on safety management in each factory with the target that all factories shall pass level 4 out of level 5 of Safety Performance Assessment Program (SPAP) as a minimum practices of SCG safety management.
- 1.10) For the safety management, we focusing on reduction of major risks that cause to death such as transportation accidents and accidents from travelling out of work. We organized a campaign through the media in various fields in order to stress the awareness of the safety for both employees and business partners, as well as, to adjust the safety management system to be more stringent.

2.4 Undelivered Projects or High-Valued Purchase Agreements

None

SCG Chemicals

2.1 Product or Service Features

- Olefins

Olefins are the primary petrochemical product comprising of Ethylene and Propylene which are the main raw materials for downstream Polyolefin plastics and related products such as Polyvinyl Chloride and Styrene Monomer. The business's current Olefins capacity is 2,900,000 tons per year. Byproducts from the olefins plant such as Mix-C4, Benzene and Toluene are mainly consumed within the business's and/or SCG subsidiaries' downstream plants.

- Polyolefins

Polyolefins are the business's main products. The business has total polyolefins capacity of 1,900,000 tons per year, covering a wide range of applications as follows:

- 1) High Density Polyethylene (HDPE) Outstanding features are good flow-ability, easy formation, and high resistance to chemicals. It is normally used as the main raw material for the production of plastic shopping bags, milk bottles, shampoo and cosmetics bottles, lubricant containers, bottle crates, fruit crates, trash bins, water pipes, power cord insulators, and etc.
- 2) Medium Density Polyethylene (MDPE) Outstanding features are high dart impact strength, stable formation, and low temperature resistance. It is normally used as the main raw material for the production of coolers, water tanks, water treatment tanks, traffic cones, and etc.
- 3) Linear Low Density Polyethylene (LLDPE) Outstanding features are high stiffness and high tensile strength. It is normally used as the main raw material for the production of industrial and agricultural films, plastic rice bags, and etc.
- 4) Low Density Polyethylene (LDPE) Outstanding features are clarity and high stiffness. It is normally used as the main raw material for the production of cold food bags, food preservation films, lids, plastic boxes, surface coatings, and etc.
- 5) Polypropylene (PP) Outstanding features are high dart impact strength and high heat resistance. It is normally used as the main raw material for the production of hot food bags, general wrapping films, woven bags, household utensils, battery shells, electrical appliance parts, car components, and etc.

- Polyvinyl Chloride (PVC)

PVC products from Thai Plastics and Chemicals Public Company Limited, the largest PVC producer in Thailand and ASEAN with total production capacity of 886,000 tons per year (Thailand, Vietnam and Indonesia), can be divided into two main categories:

- 1) PVC Resin - a type of thermoplastic in pure powder form which can withstand heat and pressure without changing its original structure and can be reused in different productions. However, it cannot be directly formed into finished goods, thus needs various additives to adjust its properties according to customers' specifications.
- 2) PVC Compound - normally in pellet or powder which has already been dry-blended with various additives such as additives to increase impact strength, additives to help the forming process, additives to increase heat resistance capability without changing its form, and etc. Due to its many outstanding features such as weather resistance, fire retardant, light weight, and rust-free material, it can be used as insulator, sheath for electrical wire, telephone cable, pipes, and etc.

- **Jetty & Tank Terminal**

The business provides its affiliates with pipe transportation as well as jetty and tank terminal for storage of petrochemical gases and liquids such as Naphtha, Olefins, Benzene, Paraxylene, Butadiene, MMA, and etc. At present, the business owns four jetties with deadweight tonnage of 100,000, 80,000, 20,000 and 10,000 tons.

2.2 Market and Competition

A) Policy and Market Features of Main Products and Services

- Policy and Market Features

Polyolefins and PVC are commodity products with a fairly volatile price cycle.

1) Competitive Strategy

- **High Value-Added Products**

The company has planned and developed high value-added products in order to improve product quality and respond to customer needs. In this regard, the business has invested in the enhancement of research and development capability and efficiency. At present, sales of high value-added products accounts for 53% of total sales of downstream products. High value-added products are namely:

- Pipe: large HDPE pipe for water work system, mining and natural gas industry
- Rotational molding: water tank, kayak boat, and components of agricultural machinery
- Wire and Cable: insulation for power cord, fiber optic, and telephone cable
- PE Wax: processing aid, dispersant, and hot melt adhesive
- Propylene compound and Propylene co-polymer: compounds for medical devices, automotive parts, and high-quality food packaging
- PVC: pipe and fitting, medical equipment film, and automotive parts
- Other specialties: construction materials, and plastic doors and windows

The business aims to further increase sales portion of high value-added products to reduce impact of business volatility in the down cycle while enhancing overall competitiveness of the business.

- **Price and Cost**

As both domestic and export prices of Polyolefins and PVC resins move in-line with the global market prices, the business aims to create a price premium by offering high quality products and services to its customers. The business has adopted Total Quality Management (TQM), which emphasizes on customer and quality, and was awarded with the Deming Application Prize.

In terms of cost management, the business gives priorities to maintaining competitive cost position. As petrochemical industry requires high investment, the business has to constantly de-bottlenecking the plant capacities to achieve economy of scale with lowest investment cost per ton. The business's whole-stream integration also provides significant advantage in the market place.

The business also utilizes Total Productivity Management (TPM), which emphasizes on equipment maintenance, production efficiency, and cost reduction. By following TPM concept, the business was awarded with Advance Special Award for its achievement in production efficiency enhancement, energy conservation, accident and environmental impact reduction, as well as in development of the employees' capabilities.

The business also employs advanced IT and e-Business systems, such as e-Supply Chain, e-Ordering, Advanced Process Control and CRM Portal to achieve best-in-class efficiency and customer satisfaction.

- **Product Quality Management**

One of the business's main policies is to produce high quality products without any effects on the environment and communities. In addition, the business also gives great importance to occupational health and safety management systems. Therefore, it integrated ISO system with TQM and TPM to come under one quality management resulted in being certified by the international quality system, namely ISO 9001, ISO 14001, and TIS 18001. In addition, the business also applied for ISO17025 which is related to laboratory management since the business invests in research and development to constantly improve its product quality to truly meet customers' needs.

- **Service**

The business recognizes that “service is the heart of selling”. Therefore, it has developed Customer Relationship Management system (CRM) through advanced IT technology, which gathers and analyzes customers’ requirements to accurately and timely respond to those needs. The system is also designed to receive customer complaints to ensure that every problem will be recorded and solved.

Moreover, the business provides technical advices on plastics conversions and engages in collaboration with customers to co-create values from development of products and services that better satisfy customers’ latent needs and help them develop sustainable growth. The business also emphasizes on accuracy of the delivery. It also engages in continuous improvement to enhance the service efficiency in order to match the customers’ business operations which vary by segments.

- **Management**

The business’s main focus is on improving management practices in order to timely and accurately respond to market volatility. On a monthly basis, the business develops integrated forward-looking plan for the whole value chain, covering production and sales, demand and supply of both raw materials and end products, as well as new products in the pipeline. This is for the business to become more proactive in adapting to the fast-pacing market and changing customers’ needs. Moreover, the business constantly measures the effectiveness of the management plan for future improvement.

The business places high importance on cultural transformation to shape continuous improvement mindset of the employees. The business also selects high potential employees to work full-time on improvement projects.

The business elevates strategic workforce planning, starting from assessing the needs and readiness of human resources in terms of numbers, capability, and traits that are vital to business operations, readying them for business development both today and tomorrow. The business also aligns enterprise’s goals to those of the employees’, using the new performance management system (PMS) and creates organizational culture that promotes common understanding. Added to this is the development of a better performance evaluation between supervisors and subordinates, as well as the development of necessary skills for executives, enabling them to be role models for employees to work collaboratively in an efficient manner.

The business enhances the efficiency of enterprise resource planning (ERP) system through the integration of all departments’ systems to quickly response to the customers. The

system consists of various functions, such as order forecast, sales and logistics planning, and inventory management.

Furthermore, the business invited world-class consultants whose expertise lies in supply chain management to co-develop and continuously improve its supply chain management with the emphasis on visibility of supply chain as a whole. In addition, the business also extends business continuity management (BCM) system to all of its subsidiaries for ongoing customer responsiveness in case of emergency.

2) Customer Features and Target Groups

Target groups are polyolefin converters which can be classified according to conversion methods, such as film, injection molding, monofilament and yarn, blow molding, and others which are coating, extrusion, and pipe.

For PVC business, target groups are plastic converters, classified based on product types such as pipe and fitting, calendaring and profile and others.

The business's customers are mostly small and fragmented so the business aims to diversify the customer base into diverse segment and region to reduce the risk from depending on a limited number of customers.

3) Channel of Distribution

In 2015, the business's domestic and export sales of polyolefins are accounted for 40% and 60%, respectively.

- **Domestic**

Domestic customers can be categorized in 2 groups; customers who convert and sell in domestic market represent 94% of the total domestic sales, whereas those who convert and export (re-export customers) represent 6%. Within the former group, 64% of transactions are made through direct sales by the business, while the remaining 36% are made through agents who also help business absorb the financial risks and distribute the products to polyolefin converters. For re-export customers, goods are sold mostly through direct sales.

- **Export**

The business mainly exports to the Asia-Pacific region. Products are distributed directly to end-users or local distributors so that customer needs are satisfied efficiently. At present, the business has 6 representative companies internationally which are located in Myanmar, Vietnam, Philippines, Indonesia, and China (Shanghai and Guangzhou). The proportion for the export market is 43% in East Asia, 30% in Southeast Asia, 6% in South Asia, and 21% in other regions.

The business exports around 1.3 million tons of polyolefins this year. By diversifying its export destinations, the business is able to avoid risks from political or economic change in a particular country. In addition, by having global based customers, the business is able to manage export products quantities for profit optimization as prices may differ depending on market conditions of each country.

In 2015, domestic and export sales of PVC through Thai Plastic and Chemicals Public Company Limited are 60% and 40%, respectively.

- **Competition and Capacity**

1) **Domestic**

Thailand has Polyolefins capacity of approximately 5.6 million tons per year while the country's demand in 2015 was approximately 2.8 million tons. Moreover, Thailand export Polyolefins around 50% of total production. However, when comparing with local producers, the business has around 34% of total domestic capacity. For PVC, Thailand has total PVC production capacity of 0.9 million tons per year. Thai Plastic and Chemicals Public Company Limited is the largest producer, accounting for 65% of total domestic capacity.

2) **Foreign**

In 2015, Polyolefins demand in Asia equaled 76 million tons, with China as the largest importer. Major exporters are producers in the Middle East, USA, Korea, and Singapore. For PVC, demand in 2015 was 27 million tons with India as the largest importer in Asia.

2.3 Products or Services Procurement

A) Product Procurement Feature

- **Production**

The business has 2 Olefins plants and 9 Polyolefins plants located in Map Ta Phut Industrial Estate, Rayong Province. Nameplate capacities are displayed below:

Company	Product / Service	Capacity (Ton / Year)	Year First Operated	% Shareholding
Rayong Olefins	Ethylene	800,000	1999	67
	Propylene	400,000		
Map Ta Phut Olefins	Ethylene	900,000	2010	67
	Propylene	800,000		
Thai Polyethylene	HDPE 1	140,000	1989	100
	HDPE 2	180,000	1997	
	HDPE 3	240,000	2001	

Company	Product / Service	Capacity (Ton / Year)	Year First Operated	% Shareholding
Thai Polyethylene	HDPE 4	400,000	2010	100
	LLDPE	120,000	1990	
	LDPE	100,000	1995	
	PP 1	140,000	1993	
	PP 2	180,000	1997	
	PP 3	400,000	2010	
Thai Plastics and Chemicals	PVC Resin	530,000	1971	91
	PVC Compound	63,500		
TPC Paste Resin	PVC Paste Resin	36,000	1993	91
PT. TPC Indo Plastic & Chemicals	PVC Resin	120,000	1996	96
TPC Vina Plastic and Chemicals Corporation	PVC Resin	200,000	1995	63
Viet-Thai Plastchem	PVC Compound	16,500	1994	66
Map Ta Phut Tank Terminal	Jetty and Tank Terminal	-	1998	82
Rayong Pipeline	Pipe Transportation	-	1998	92
Rayong Engineering and Plant Service	Engineering and Plant Service	-	2001	100

- **Raw Material Procurement**

- **Olefins Production**

The key raw material in Olefins production is Naphtha. The business purchased 28% of total naphtha from local producers, and 72% from producers in the Middle East. In addition, the crackers were designed to use alternative raw materials, such as liquid petroleum gas (LPG), raffinate, and condensate if Naphtha price is higher than other raw materials.

- **Polyolefins Production**

The key raw material in Polyolefins production is Olefins. The business has olefins purchasing contracts with PTT Global Chemical PLC (PTTGC) of 325,000 tons per year and contracts with in-house olefins producers of 1,564,000 tons per year, while the rest of olefins production is sold to joint ventures and external customers who are the business's olefins

plant shareholders. Moreover, the business is also able to procure more Olefins from PTTGC or import in case of Olefins shortages.

- **PVC Production**

The key raw material in PVC production is Vinyl Chloride Monomer (VCM). The business can produce VCM to fulfill all demand from its domestic PVC production. For its production facilities in Indonesia and Vietnam, the business sources VCM through agents.

B) Environmental Impact

The business is a leader in environmental innovation for sustainable development and places the importance on the continuous development of the innovation for the society, community, and safety. The business operates in an environmentally friendly manner and focuses on the management along the supply chain from upstream (vendors and business partners) to downstream (customers and partners) by the process that involves the stakeholders.

The business is considered the first petrochemical company whose all production facilities received Eco Factory certification from the Federation of Thai Industries, and also the first petrochemical business in Thailand that has been awarded the Green Industry Level 5, which is the highest level, from the Ministry of Industry. Furthermore, the business has been supporting business partners and alliances to enter the Green Industry certification process.

In addition, the business has been exchanging waste and energy with both internal and external parties to promote industrial Symbiosis, or the use of shared resources to maximize value. The business's implementation of 3Rs (reduce, reuse/recycle, and Replenish) and of eco- efficiency concept, shows its determination to preserve the environment and operate the business by sustainable development principle.

Moreover, the business has been certified with Environmental Management system: ISO 14001, Energy Management System: ISO 50001 as well as examined the Environmental Performance Assessment Program (EPAP) by 3rd party institutions which are internationally accredited in order to raise the environmental management system to the world-class standard.

2.4 Undelivered Projects on High-Valued Purchase Agreements

None

SCG Packaging

SCG Packaging PLC. was established in 1980 by The Siam Cement PLC. and Siam Kraft Co., Ltd. to engage in manufacturing and sale of pulp. Its initial registered capital was Baht 100 million under the name of The Siam Pulp and Paper Co., Ltd. The Company was later converted into a public company in 1994 and raised its capital to Baht 1,400 million. Currently, the registered capital is amounted to Baht 1,563 million. The Company was delisted from the Stock Exchange of Thailand in 2003 and was thereafter renamed to SCG Paper PLC. in April 2007. In 2015, The Company has registered its name change. Effective June 2, 2015, the official name becomes “SCG Packaging Public Company Limited”. This name change reflects the company’s strategic focus towards packaging products and applications, with the aim of providing total and sustainable packaging solutions for its customers.

The SCG Packaging PLC. and subsidiaries is the country’s only integrated producer of high quality pulp, paper, and containers. Their main business chain are Packaging chain and Fibrous chain.

Key Information	
Capacity	<p>Packaging Chain</p> <ul style="list-style-type: none"> ● Packaging Paper 2,306,000 tons per year ● Containers <ul style="list-style-type: none"> - Corrugated Containers 1,013,000 tons per year - Flexible Packaging 520,000,000 square meter per year <p>Fibrous Chain</p> <ul style="list-style-type: none"> ● Pulp 470,000 tons per year* ● Dissolving pulp 96,000 tons per year ● Printing and Writing paper 570,000 tons per year <p><i>*Remark – While produces dissolving pulp, a capacity of Pulp line will be 325,000 tons per year.</i></p>
Main Products	<p>Packaging Chain</p> <ul style="list-style-type: none"> ● Kraft paper, duplex board, corrugated containers, Flexible Packaging <p>Fibrous Chain</p> <ul style="list-style-type: none"> ● Pulp, Dissolving pulp, printing & writing paper
Brand	<ul style="list-style-type: none"> ● Packaging : Green Carton , Inspired Studio ● Printing and writing paper <ul style="list-style-type: none"> Idea Green, Idea Work, Idea Max, Supreme, Delight, Spring PRO Series – Offset PRO New, Matt PRO New, Gloss Pro New, Card PRO, Note PRO, Text PRO Green Series – Green Offset, Green Card, Green Matt, Green

Key Information	
	MattCard, Green Form Idea Green Plus Idea Carepack - Food Packaging
Strengths	<ul style="list-style-type: none"> ● Response to customer needs by provide “Total packaging solution” ● World-class quality. ● Continual offering innovative products and services. ● Strong domestic distribution channel and marketing system, as well as the worldwide exports. ● Efficient production cost control. ● Total Quality Management – TQM.
Major Business Policy	<ul style="list-style-type: none"> ● Maintain domestic market leadership. ● Aspiring for regional leadership in paper and packaging business. ● Focus on sustainable growth strategy and providing good returns to shareholders and stakeholders. ● Conserve the environment.
Business Development Policy	<ul style="list-style-type: none"> ● Improve existing machines for higher efficiency. ● Develop innovative products to better serve customers' needs ● Seek opportunities in expanding its business with Merger and Acquisition as a priority. ● Develop knowledge, skill and experience for all levels of employees to maintain competitive advantage and become a regional leader.

2.1 Product or Service Features

SCG Packaging is the country’s leading manufacturer of paper and corrugated containers. The business is the only integrated producer in Thailand with production process starting from pulp preparation to manufacture of printing and writing paper, packaging paper, corrugated containers and flexible packaging. Being in such position allows it to appropriately allocate the production capacity, efficiently control the costs, make it relatively less vulnerable to external changes, and add value to its products. There are two major business chains as follows:

- Packaging Chain

The major products comprise of kraft paper for the manufacturing of corrugated containers, extensible sacks, kraft bags, paper core, gypsum linerboard, coated duplex board and various types of corrugated containers, offset packaging, flexible packaging, logistics materials, merchandising display, and design solutions.

- **Fibrous Chain**

The main products are eucalyptus pulp, dissolving pulp and printing & writing paper. It also provides specialty paper, and paper & packaging for food and beverage.

Eucalyptus pulp is used as raw material for various paper grades e.g. printing & writing paper which is used for magazines, notebooks, textbooks, photocopy paper, kraft paper which is used for packaging and containers, specialty paper which is used for industrial applications such as label paper, paper for furniture uses, paper for medical & hygiene uses and also paper & packaging for food and beverage such as cup stock paper and cone cup. In addition, eucalyptus pulp is also used as raw material for other applications e.g. rayon fibers and melamine compound resin.

2.2 Market and Competition

A) Policy and Market Features of Main Products and Services

- **Policy and Market Features**

- 1) Marketing strategy**

SCG Packaging focuses on continuous development of products and services to satisfy customers' needs. "Innovation" is the key strategy to increase our sustainable competitiveness in high competitive market. For Packaging Paper Business, SCG Packaging has developed new packaging paper called "Hi-Strength" paper, lower basis weight with the same strength comparing with the relative basis weight paper. It saves production cost and environmental resources.

Moreover, SCG Packaging continuously improves and develops environmentally friendly products. Our products are awarded for promotion of raw material reduction and reuse by the Green Label, the national environmental certification awarded to specific products which have less detrimental impact on the environment in comparison with other products serving the same function. Additionally, SCG also has its own environmentally friendly certification, called 'SCG eco value'. For example, linerboard (KA, KH, KT, TA, TR, TD) and corrugating medium (CS) were certified by SCG eco value for their higher recycled content comparing with competitors' in the market.

Furthermore, SCG Packaging is manufacturer of packaging paper who have obtained the FSC-CoC (Chain of Custody) certification. This internationally-recognized certification is granted for products that come from FSC-certified forest and processes. The FSC or the Forest Stewardship

Council has taken into account the raw material selection, raw material handling and storage, product amount control, sales and delivery of products before environmentally friendly product guarantee. Our products, e.g. containerboard, sack kraft paper, coreboard, gypsum linerboard and coated duplex board, have gained several types of the FSC-CoC certification (FSC Recycled 100%, FSC Mix 100%, and FSC Mix 70%), ensuring that our products are environmentally friendly, and commit to social responsibility.

The packaging business has aimed at being a total packaging solutions provider who offers such wide range of packaging as flexible packaging, offset packaging, corrugated containers, logistics materials, and merchandising display that could respond to all the customers' packaging requirements. And since the company has foreseen the impressive growth potential of the flexible packaging industry which allies with the current consumer behavior requiring more convenience in shorter time, the company, therefore, has expanded its flexible packaging business by establishing new plant in Samutsakorn province, Thailand and acquiring shares of Tin Than Packing Joint Stock Company ("BATICO"), one of the five biggest flexible packaging companies in Vietnam. With this flagship expansion, the business has achieved greater flexibility in serving customer requirements. The company has also continuously invested in new machinery and equipment so as to offer a variety of products to the customers. The business has expanded its range of printing expert into flexographic preprint, offset printing and digital printing, aside from flexographic postprint, the main printing system expertise of the business. Furthermore, packaging business has also invested in designer team development to work proactively and to have a skill set of integrated design, including the design of logo, brand, merchandising display, exhibition, and other printing materials. Moreover, the facilities across the country and the region, increase customer confidence on our premium quality products and services.

For Printing and Writing Paper business, it's focus on outsourcing strategy by outsourcing non-printing and writing paper from our partners to satisfy customer requirements and expand to new market.

In addition, Printing and Writing Paper business continuously expands its business to non-printing and writing. In 2015, the new brand "Fest" was released. This brand is a new brand for food packaging products, which are made of food grade paper that is free from toxic and safe for food contact, e.g. cone cup, lunch box, paper plate, and bowl.

For new product, Machined Glazed Interleaving is on development process. This product is used for interleaving offset printing plates and metal sheets in metal industry. This new paper is needed to make in special conditions, in which high quality virgin pulp is required and PH

condition is needed to be controlled, so that the product can be suitable for interleaving work in metal industry.

Another project is the project of semi-bleached chemical pulp and unbleached short fiber chemical pulp production capacity expansion to 70,000 tons and 25,000 tons per year accordingly, as to cope with the increased demand in food packaging paper. The production will start in early 2016.

For an update of Glassine paper project, this project will modify an existing machine to produce glassine paper, the new interleaving paper used in pressure sensitive labels. This project is High Value Added Products & Services (HVA) with an annual capacity of 60,000 tons per year. This investment makes SCG Packaging the first major glassine paper producer in ASEAN, serving high demand both locally and regionally. The production is expected to begin operation in early 2016.

2) Customer Features and Channel of Distribution

Packaging Chain

Packaging Paper

Channel: Directly sold to affiliated firms under SCG Packaging and external customers. Products include paper rolls for converting plants and converted products such as sheet board, paper bags, ream paper, and small rolls. The products are also exported to several countries such as Malaysia, Indonesia, Singapore, Vietnam, Cambodia, Myanmar and China etc.

Packaging

Channel: Packaging Business (Corrugated Containers) offers direct sales by sales representatives and account executives who work closely with the customers; Packaging Business now possesses 23 Corrugated Containers plants and 4 Flexible Packaging Plants. All the plants' location is both nationwide and ASEAN-wide including Thailand, Vietnam, Indonesia, Singapore, and Malaysia.

Fibrous Chain

Pulp

Channel: Directly sold to affiliates in the Paper Business and external customers and sold through agents for export markets.

Printing & Writing Paper

Channel: 74% of total sales served domestic market by different channels, including printing house, industry uses, agents, converter, modern trade and stationeries stores. The rest, 26%,

is sold to export markets; Vietnam, Myanmar, Malaysia, Australia, USA, Japan, Hong Kong, South Korea, ASEAN countries, and the Middle East Countries.

Specialty paper for industrial uses

Channel: Directly sold to industrial customers or converters and agents for export markets.

Paper & Packaging for food and beverage

Channel: Sold through converters, food packaging stores, and agents for export market.

- Industry, Competition, and Trend

1) Packaging Chain

Demand of packaging paper in Thailand grew up 1.9% y-o-y. For ASEAN, demand for packaging paper increased 4% y-o-y. In 2016, Demand of packaging paper in Thailand expects to increase by 2-3% y-o-y, resulting from higher domestic consumption. For ASEAN market, demand of packaging paper expects to growth 5% thanks to economic growth, increasing private consumption and export sector. However, packaging paper producers plans to increase additional capacity 1.1 Million tons per year in 2016.

Demand of corrugated containers in Thailand 2015 grew only 1.9% y-o-y as overall domestic consumptions remained sluggish. The main reason behind sliding demand is the dropping income of agricultural sectors, which was caused by declining consumer confidence and cautiously purchasing decision. Packaging demand for the domestic market declined consequently. Overall export also dropped due to weak global economy including the U.S., China, the European Union, and Japan. Packaging demand for export products, therefore, did not grow compared to the previous year.

Thanks to manufacturers' marketing campaign and new product launches, food, beverage and consumer products generated comparable growth to last year. For beverage sector, fruit juice and energy drink grew modestly in export market, while bottled water and green tea developed its growth from Thailand's tropical hot weather and continuous marketing activities. On the alcoholic beverage side, the alcoholic beverage control act played major roles in changing beer packaging and label as well as charging higher tax rate for 'national sports development' fund. The higher alcoholic beverage selling prices, resulted from higher tax rate, have influenced manufacturers to focus on sizing strategies. For frozen and processed chicken sector, producers were able to export to Japan and South Korea after they abolished import chicken products restriction from Thailand. However, the spread out of bird flu in China, Japan, Netherland, U.S., Canada, Egypt, and Nigeria provided positive prospects towards Thai chicken sector as importers banned chicken products from those bird flu infected nations.

As the result, Thailand was able to export the greater amount of frozen and processed chicken than expected.

Less packaging demand can be seen in several sectors which are electrical appliance, canned food and frozen shrimp sectors. For electrical appliance, domestic packaging demand decreased as several producers have shifted production bases away from Thailand to neighboring countries. Like the sliding domestic packaging demand, exports of electrical appliance to Japan, the main export destination, also dropped due to its depressing economic situation. For the canned food sector, shortages of raw material including pineapple and tuna remained big challenges. Frozen shrimp production also contracted from Early Mortality Syndrome (EMS). As a consequence, shrimp farmers discontinued their farming since shrimp selling price was lower than production cost. Last but not least, human trafficking remained the major issue and Thailand was rated at Tier 3 as well as received warnings from EU regarding IUU Fishing (Apr 2015). For those reasons, Thai exports of frozen and canned food products slowed down. However, the Early Mortality Syndrome (EMS) is expected to be solved. More shrimp production will be released to the market.

For ASEAN market situation in 2015, Demand of corrugated containers in Vietnam grew up 7.5% y-o-y mainly from electricals and electronics products, footwear and garment industry.

In 2016, growth rate for packaging industry will be brighter than how it was in 2015. 2-3% growth is expected from increasing national GDP, in which two-third came from food, beverage and consumer product sectors. Furthermore, Vietnam market trend in 2016 is expected to have higher growth than in 2015 at the range of 6 – 6.5%. The driving segments are electricals and electronics products, footwear and garment industry. However, price pressure remains the major challenge for packaging industry since packaging producers aim to expand their business continuously. Production efficiency and cost reduction will turn to be the key success factors, which could not only increase competitive advantage but also allow the organization to perform with profitability, continuously.

2) Fibrous Chain

Bleached chemical long and short fiber pulp

In 2015, world bleached chemical long and short fiber pulp demand increased 3% y-o-y due to demand in printing and writing, which accounts for substantial part of total demand, has decreased. But demand in tissue paper has been increasing. The average price of bleached chemical short fiber pulp increased as paper producers convert their production to consume more short fiber, while the average price of bleached chemical long fiber pulp decreased due to regional demand softness.

In 2016, world bleached chemical long and short fiber pulp demand is expected to be increased by 3% y-o-y but the average price of bleached chemical short fiber pulp tend to decrease because the new capacity launching into the market from Brazil. However, the average price of bleached chemical long fiber pulp is expected to remain stable from sluggish demand.

Dissolving Pulp

In 2015, The overview demand for dissolving pulp increased 11% y-o-y because of good substitute for other fibers. And dissolving pulp price increased due to limited supply and higher demand from China viscose market.

In 2016, global dissolving pulp demand is expected to increase 3.7% y-o-y from viscose segment. The price of dissolving pulp is expected to be higher due to some producers will change their raw material from cotton to dissolving pulp for competitive cost.

Printing and Writing Paper

For Printing and Writing Paper industry in Thailand 2015 decreased by 8% y-o-y mainly from the substitution of digital media, especially in promotional materials and magazine segments. Furthermore, import paper volume increased 28% y-o-y because of anti-dumping policy in USA, which urged producers from China and Indonesia to export more to ASEAN.

Printing and Writing Paper demand in 2016 is projected to be decrease by 6% y-o-y. Since printing media tend to be replaced by digital media continuously.

2.3 Product or Service Procurement

A) Product Procurement Feature

- Raw Material and Suppliers

Packaging Chain

Packaging Paper

Raw Material Type: Wastepaper, bleached and unbleached short fiber pulp, bleached and unbleached long fiber pulp, and chemicals.

Source:

- Wastepaper: 65% from local vendors and 35% from import.
- Bleached and unbleached short fiber pulp: 60% from local vendors and 40% from import.
- Bleached and unbleached long fiber pulp: All from import.
- Main chemicals such as starch, sizing agent, color, and others: From local vendors and import.

Obstacles: Bleached and unbleached short fiber pulps are imported. Unbleached long fiber pulp is entirely imported from a few suppliers within 30-45 days lead-time. The domestic supply of

wastepaper is also limited, leading to requiring imported wastepaper, which has higher price than domestic wastepaper.

Packaging

Raw Material Type: Kraft paper

Source: From Siam Kraft Industry Co.,Ltd., a subsidiary of SCG Packaging.

Obstacles: No problem on raw materials due to adequate supplies and quality control. Selling price is set by referring to current market price to optimize fair and competitive cost.

Fibrous Chain

Pulp

Raw Material Type: Eucalyptus logs and chips.

Source: Eucalyptus logs and chips are bought mainly from open market and contract farming.

Printing & Writing Paper and Non-Printing & Writing Paper such as specialty paper for industrial uses and Paper & Packaging for food and beverage

Raw Material Type: Bleached long fiber pulp, bleached short fiber pulp, and chemicals.

Source:

- Bleached long fiber pulp from import
- Bleached short fiber pulp from local and import
- Wastepaper from local and import
- Chemicals, synthetic latex, kaolin powder, calcium carbonate, and others from local and import

Obstacles: Bleached long fiber pulp is entirely imported with 30-45 days lead-time.

B) Environmental Impact

SCG Packaging has continuously committed to operate its business based on sustainable development philosophy. Risks and opportunities are considered in strategic planning in order to cope with a rapid change of business environment. Moreover, SCG Packaging also considers the impact on all stakeholders with a will to balancing economic, social and environment.

SCG Packaging has selected high technology which was environmental friendly and has realized how important of energy through minimize resources and reused waste from production in form of recycled materials or alternatives energy such as biomass from recycled paper, bark, and sludge. Furthermore, SCG Packaging develops products from waste in production process and focuses on environmental treatment systems such as high efficiency water treatment, anaerobic water treatment to promote a better life quality of the community around the factory.

SCG Packaging has encouraged environmental and social responsibility among all stakeholders so as to raise their awareness and participate in social and environmental conservation. The company also promotes improvement of community activities such as

- SCG Good Health: support medical instruments to communities around the factories.
- SCG Packaging Happy Community: support and adds value to the products of the communities around the factories such as IDEA honey from Ratchaburi, Organic rice from Khonkaen and Hand-woven cloth from Ayudhaya. All products were value added via packaging design for New Year giveaway period.
- SCG Green Mart: an project develops from 'We are Greeners project', promotes social responsibility activity to communities around the factories.
- SCG Packaging builds up school for tribal in Maehongsorn.
- Business Partnership project: persuade the other plants in same area to cooperate in making a better community,
- One Manager One Community: receive feedback and suggestions from the community, and supplier development for sustainability

All are for develop knowledge and skill of partners and all stakeholders to have sustainability.

In addition, beside the projects for sustainable social development, SCG Packaging has promote activities to raise awareness of environmental conservation such as "SCG Packaging Green Academy 8th" to children ,who live around the factories, to have the opportunity to learn the Environment, How to get a good health, how to select food and to be environmentally friendly.

To ensure that customers will receive the products with high quality and environmental friendly, SCG Packaging has emphasized on research and development of environmentally friendly products and services under 'SCG eco value' standard. The products under 'SCG eco value' in 2015 are as follow

1. CS Super flute: environmental friendly corrugated paper that reduces the use of pulp for at least 12 percent.
2. TTF Eco Liner: eco-friendly with 3 plies of kraft top liner from 100% recycled paper FSC certified.
3. Green carton 'G5': reduce paper usage 125 g/sqm while remain carton's strength.
4. Idea Max: reduce resource usage 10% by ultra-performance formula improves paper opacity and enabling the fullest usage of paper on both sides.

2.4 Undelivered Projects on High-Valued Purchase Agreements

None

3. Risk Management

Risk Management

SCG has continuously raised risk management awareness throughout the organization as we believe that risk management is a crucial tool that allows the company to cope with uncertainties which are becoming more complex and more severe than in the past. This past year, SCG's risk management emphasis has extended beyond downside risk protection to help the organization exploring new business opportunities and making decision for new investments. All of the above will lead to add value to the organization, shareholders, and stakeholders as well as contribute to SCG's sustainable growth.

SCG Enterprise Risk Management Framework

SCG has implemented Enterprise Risk Management Framework which aligned with international standards. The SCG Risk Management Framework consists of:

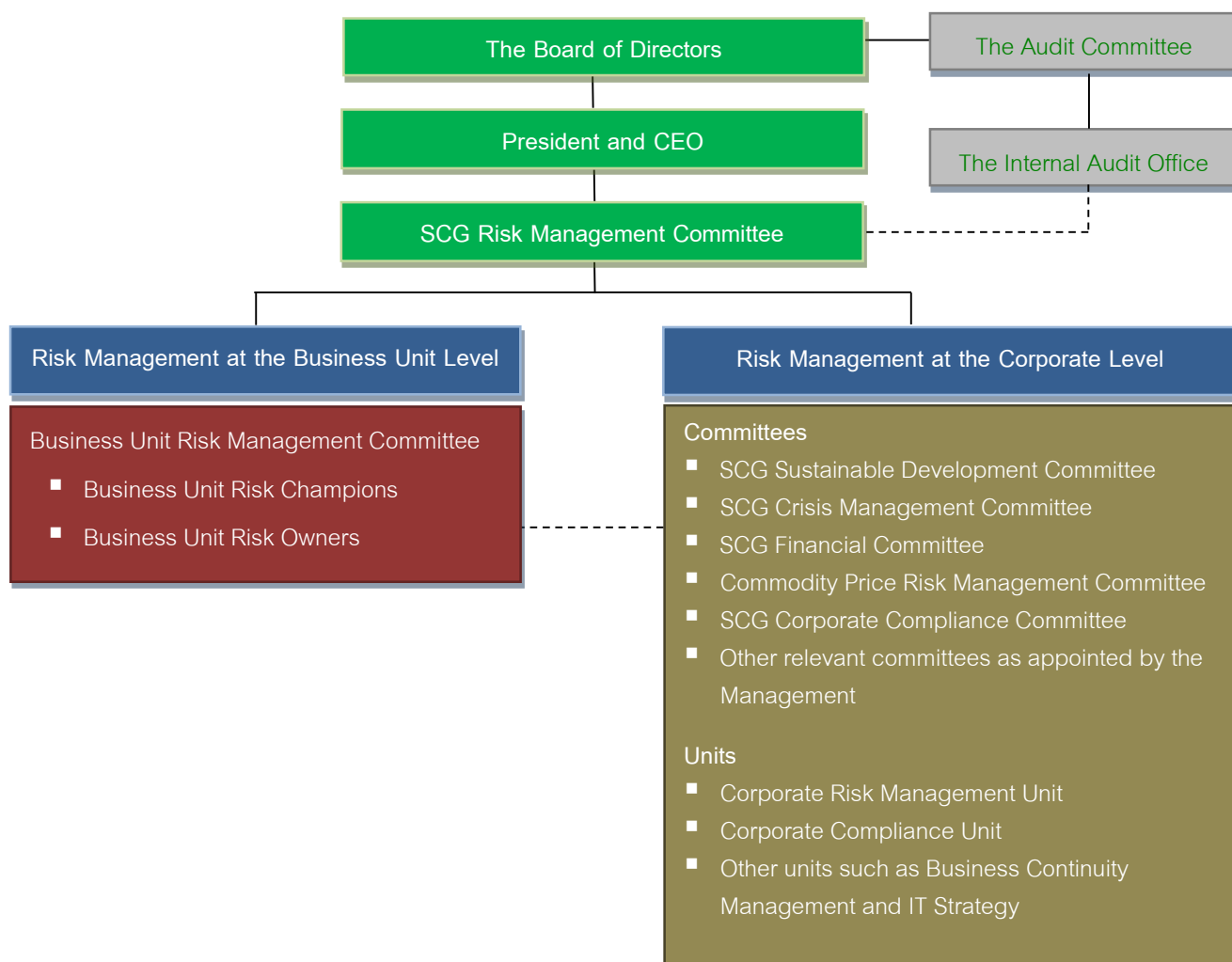
1. **Strategy Establishment**

SCG has established explicit objectives and risk appetite in managing risk in order to ensure consistent risk management practices across the organization.

2. **SCG Risk Management Structure and Responsibilities**

Continuously committed to developing and improving risk management structure and capability, SCG has established the SCG Risk Management Committee chaired by the SCG President and CEO. The Committee oversees, supports, and monitors risk management in all areas, including compliance. The organization structure of SCG's risk management is illustrated below:

Enterprise Risk Management Organizational Structure



— Reporting line

--- Coordination and information exchange

The Board of Directors and Audit Committee

The Audit Committee, on behalf of the Board of Directors, establishes risk management policies and oversees risk management process and practice in the countries where SCG operates. The Audit Committee also evaluates the risk management system to ensure efficiency, effectiveness and compliance with established guidelines.

Internal Audit

SCG Internal Audit's role is to conduct audit of the first line (Operating Unit) and the second line (management level, risk management and compliance, and other supporting functions) to provide assurance concerning the efficiency and effectiveness of risk management. The internal audit also reports the audit outcomes to the Audit Committee. Additionally, the Unit provides consultation and communicates Audit Committee's opinions to the first line and functions that are being audited for improvements.

The SCG Risk Management Committee

The SCG Risk Management Committee consists of the President and Vice President of each business unit. The SCG President and CEO serves as the Committee Chairman. The SCG Risk Management Committee has the following core responsibilities:

1. Improves / determines risk management structure and designates responsible parties for risk management.
2. Considers and approves risk management policies, strategies, framework, and plans.
3. Reviews and monitors SCG risk profile.

2.1 Risk Management at the Corporate Level

Risk management at the corporate level comprises top executives from all business units who establish directions, policies, goals, and strategies for managing risks which have a material and pervasive impact upon SCG's business operations. In this regard, SCG has set up relevant committees / corporate units to manage specific areas and closely monitor ensuing situations. These include:

- 2.1.1 The SCG Sustainable Development Committee defines policies and guidelines for sustainable development in the areas of safety, health, environment, community and social responsibility to be on par with international standards, while setting an example at the national level. The Committee also monitors relevant indicators and risk trends and reports to the SCG Risk Management Committee and the Board of Directors.
- 2.1.2 The SCG Crisis Management Committee consists of the SCG top executives who are assigned to set policies and strategies and make decisions on how to handle crises that affect, legally and otherwise, business operations and corporate image. The Committee also cooperates with external parties to support handling of these crises and provides

updates on such situations to the SCG Risk Management Committee and the Board of Directors.

- 2.1.3 The SCG Financial Committee establishes policies and guidelines for managing financial and foreign exchange risks with regard to investment transactions, loans, deposits, and international transactions, Establishes policies and oversees management of financial derivatives and cash management and Monitors financial status, foreign exchange and interest rate trends, and reports such updates to the SCG Risk Management Committee.
- 2.1.4 The Commodity Price Risk Management Committee establishes policies, guidelines, and strategies for managing risks from rising or volatile prices of major raw materials and fuels used in manufacturing processes to manage costs and enhance competitiveness in the global market, and propose such information to the SCG Risk Management Committee and the Board of Directors.
- 2.1.5 The SCG Compliance Committee formulates strategies, coordinates and systematizes compliance efforts, as well as communicates SCG Compliance Policy to business units and corporate units through the Corporate Compliance Unit and reports to the SCG Risk Management Committee and the Board of Directors.
- 2.1.6 The Corporate Risk Management Unit communicates risk management policies and strategies established by the SCG Risk Management Committee to all relevant parties. The Unit coordinates with business unit risk champions to review risk management outcomes of key risks, which may impact SCG's both short and long term goals, and reports to SCG Risk Management Committee. The Unit also monitors key situations in SCG's strategic countries and compiles reports as part of cross-border risk management. Moreover, the Unit tracks and continuously improves SCG staff's risk management capabilities, promotes sharing of risk management knowledge, and builds risk management culture throughout the organization.
- 2.1.7 The Corporate Compliance Unit leads the establishment of SCG's Compliance Management System, which comprises of the compliance work system, the compliance framework, and the compliance audit and report to ensure clarity and system-wide linkage between SCG, business units, companies, units, and employees. The Unit reports the compliance management outcomes to SCG Compliance Committee and SCG Risk Management Committee.
- 2.1.8 Other Units are corporate risk owners responsible for managing risks which may have a pervasive impact upon SCG operations or which require specialized expertise; e.g. the Business Continuity Management and IT Strategy Unit (responsible for managing risks

resulting in business disruption and IT risks); or the Corporate Communication Office (responsible for managing risks which may affect SCG's reputation). These Units report their risk management outcomes to their respective committees.

2.2 Risk Management at the Business Unit Level

As SCG consists of various business units operating in a diverse range of industries and working environments, each business unit has established Business Unit Risk Management Committee to ensure the efficient risk management and its ability to cope with business specific risks in a timely and appropriate manner. Each of these committees, which comprises executive officers from all companies within each business unit, are responsible for ensuring systematic risk management, establishing risk management structures and strategies, designating risk owners to manage risks, oversee and monitor risk management outcomes, and report such outcomes to the SCG Risk Management Committee. The designated business unit risk champions communicate risk management policies and strategies set by the Business Unit Risk Management Committee to all relevant parties. The risk champions monitor trends and important situations which may affect both short and long term goals of their business units in order to establish strategies and countermeasures. The champions also track and continuously improve the risk management capabilities of each business unit, as well as promote the exchange of risk management knowledge and build the culture within that unit.

3. Risk Management Process

In order to put the above risk management framework into practice, SCG designated three primary areas to manage risk. These are (1) medium and long-term strategic risk management (2) investment project risk management and (3) operational risk management. The following risk management processes for the above three areas are documented in the "SCG Risk Management Manual".

3.1 Risk / Opportunity Identification

Facilitating the risk / opportunity identification and creating a common language, SCG developed the SCG risk universe which covers all risks that could potentially impact the business performance. The risks are categorized into eight categories for easy understanding and practice as follows: (1) Safety, Health and Environment Risk (2) Compliance Risk (3) Reputation and Intellectual Property Risk (4) Hazard Risk (5) Input Risk (6) Process Risk (7) Financial Risk and (8) Business Risk.

3.2 Risk Assessment

SCG established common risk metrics to standardize assessment methodology across the organization. Risk owners use various tools e.g. scenario analysis, correlation analysis, and

benchmarking to assess the likelihood, severity, and manageability of risk. The assessment results are then compared with specified risk limits, which are devised in accordance with risk appetite. SCG divides risk limit into two levels, the corporate level and the Business Unit level.

3.3 Risk Response

SCG chooses an appropriate risk mitigation strategy, i.e. Retain, Exploit, Transfer, Reduce and Avoid, to manage a specific risk, in line with SCG limit. If the risk owners find that a residual risk remains higher than the designated risk limit, countermeasures must be clearly stated or emergency response and business continuity plans must be developed in case of a crisis. For emerging opportunities, business plans must be developed to capture such opportunities on a timely basis.

3.4 Risk Reporting

Risk management results are reported to the Business Unit Risk Management Committee and SCG Risk Management Committee, respectively. Then, the reports are presented on to the Audit Committee on a quarterly basis.

4. Building a Corporate Risk Culture

SCG recognizes that the risk culture is a critical component of the success of risk management, even with leading risk management tools and standards. If parties within the Group do not share a similar understanding of the risk management framework or risk appetite, or possess mindsets which are not in accordance with SCG risk management guidelines, erroneous decision-making can arise. SCG has, therefore, established guidelines for building a corporate risk culture as follows:

- Communicate messages from the “tone at the top” regarding the significance of risk management, with executives as role models in risk management.
- Establish practical guidelines by setting up common risk language, risk appetite and common risk assessment system.
- Specify roles, responsibilities and accountabilities of each risk owner as well as risk champion of each business unit.
- Continuously improve existing risk management system which can add value to the business using feedback from risk survey, selected companies’ risk management evaluation results, and benchmarking with external companies’ practices to improve organization’s risk management.
- Embed risk management into investment project approval process, annual and medium-term planning.
- Prescribe risk as an agenda item of major meetings at each company.

- Designate risk management as a component of training and development programs for directors, top executives and SCG staff.

Key Risks and Management Strategies in Accordance with the Sustainable Development Approach

Safety, Health, and Environment Risk

1. Safety and Health Risks / Mitigation Plans

As SCG conducts its businesses in heavy industries which rely upon both machinery and chemical substances, the organization recognizes the importance of the health and safety of its employees and business partners. However, overseas operations in countries, whose environments and safety and health standards deviate from those identified by SCG can be susceptible to safety and health risks. Therefore, SCG has stipulated risk appetite and risk limits indicating that health and safety risks are considered unacceptable and continuously enforced offensive measures to prevent losses from occurring. SCG has established SCG Safety Framework and applied Safety Performance Assessment Program (SPAP) to monitor risks as well as adopting Behavior Based Safety system to reduce risky behavior, Management of Change to diminish risks induced by shifts in working environments, and Proactive Key Performance Indicator (KPI) to regulate risk-reduction activities to meet the target.

However, safety and health risks still remain a challenge in the face of each country's differing environments and safety and health standards.

Business Opportunities

In the short run, not only a safety and healthy workplace environment benefits SCG staff themselves, but it also allows the operations to run efficiently and smoothly and reduce unnecessary production cost.

In the long run, it is SCG's aim to continuously develop its position as the leader of change, and this extends to its suppliers. SCG coordinated with major suppliers to agree upon and sign on the SCG Supplier Code of Conduct the scope of which includes safety and health matters. In addition, SCG has successfully implemented SPAP in overseas companies that SCG operates and disseminated to its alliances the application of these safety management principles. With the synergy of SCG and its alliances, the practice can reach the wider society and bring about sustainable business conduct in both domestic and overseas.

2. Environment Risks / Mitigation Plans

As a result of climate change and natural disasters that are ever-increasing both in numbers and destructiveness, various environmental conservation movements have become active and

may affect continuity of business operations, the organization's reputation, or increasing costs due to compensation expenses which may arise. Thus, SCG has consistently demonstrated its commitments to corporate social responsibility (CSR) through its projects such as SCG Conserving Water for Tomorrow and Community Partnership.

In addition to CSR projects, SCG recognizes that energy consumption directly leads to greenhouse gas emissions, one of the main causes of global warming. Therefore, SCG continuously improves the efficiency of its production to meet the energy efficiency target. For overseas production, SCG makes a strategic choice to utilize a country's natural resources according to their availability and price competitiveness. In addition, SCG strives to increase the use of renewable energy, to explore for sources of alternative energy and new types of fuels, and to develop products that reduce energy consumption and greenhouse gas emissions.

Moreover, SCG is the first-ever organization in Thailand to implement closed-system coal operation at Nakhon Luang port in Ayutthaya Province. The operation is on par with the Japanese and Australia standards. In order to mitigate impact from coal operation to the community and environment, the system covers the entire coal handling process, from sourcing, handling, stockpiling, and delivering to customers.

Business Opportunities

Several key global changes are currently driven by megatrends, one of them is the consumption of products and services with environmental consciousness, which SCG believes presents an opportunity for sales growth. For instance, the organization has introduced "Fest" food safety packaging, totally produced from bagasse and virgin pulp, pulp from shallow – rooted Eucalyptus trees which protect the ground. At the same time, SCG Chemicals is the first-ever chemical business in Thailand to be certified as "Eco Factory" from The Federation of Thai Industries.

Compliance Risk

3. Risks from Changes in Laws & Regulations / Mitigation Plans

Risks regarding compliance to laws and regulations include risks from noncompliance with internal and external laws and regulations such as legislation, government policy, anti-corruption policy and SCG Code of Conduct. Laws and governmental policies in particular are subject to constant change; therefore, non-compliance or partial compliance could negatively affect the organization's reputation and result in significant penalties and fines or loss of business opportunities.

In 2015, the National Legislative Assembly issued an Anti-Corruption Act No. 3, where alteration is made on the enforcement of harsher penalties. This is in line with SCG's policy that

addresses Anti-corruption as an important issue and fosters this matter as a company culture. Throughout 2015, SCG has carried out activities that support compliance of SCG anti-corruption policies and communicate such policy to every SCG staff at all level to raise their awareness and to perform accordingly. For instance, Anti-Corruption activity called “Preventive Pack Three” which comprises of 1) “Ethics e-testing” focusing on moral, SCG Philosophy, code of conduct and anti-corruption policy, 2) good risk management and control practices in accordance with the “Three Lines of Defense” concept 3) collection and communication of fraudulence case study has been carried out to raise awareness, educate and prevent corruption among SCG staff.

Business Opportunities

Corruption can greatly cause negative impacts to business operations. For example, unnecessarily higher costs and expenses, unfair-practice with trading partners, loss of costumers’ trust toward SCG products and the organization. As a result, SCG has communicated Anti-Corruption policies to directors, executives and employees at all levels to follow strictly. By acting upon the policy, inessential expenses can be avoided, trading partners show their interests in doing business with SCG as they believe in fair practices, and customer’s trust in SCG products and services.

In addition to continuously communicating Anti-corruption policies to all employees throughout last year, SCG, as a certified company by the Private Sector Collective Action Coalition against Corruption Council and a leader of change, has demonstrated its commitment to promoting and disseminating such practice to other companies and alliances in Thailand. This is so that the principle and concept of good citizenship and compliance to communities, society, and environment can reach the wider society and bring about sustainable business.

Reputation and Intellectual Property Risk

4. Reputation Risk from Social Media / Mitigation Plans

Social media is known for its ease of accessibility and speed of communication. In the event that SCG becomes the topic of negative news coverage, such rapidity may cause serious impact on the brand and reputation of the organization. To align with “SCG Brand Protection” strategy, which focuses on brand and reputation risk management, SCG has established a Brand Committee who is responsible for monitoring online risk events that could possibly impact SCG’s reputation. Other responsibility includes the preparation of countermeasure and communication system for normal and crisis situations as well as conducting crisis management drill. At the same time, the organization has established “SCG Digital Media Presence”, a working group who assists in building SCG’s brand in a digital world using a systematic, efficient, and risk-aware

approach. Concurrently, the group also provides consultation and training to SCG staff to be equipped with skills and complied with SCG's policy when building brand online.

Business Opportunities

As the use of social media is increasing, organization adaption to digital transformation is unavoidable. SCG foresees the opportunities from applying digital technology to create business value, for instance, online merchandising for SCG building material products to expand distribution channels and create opportunities to access new customers.

5. Intellectual Property Risks / Mitigation Plans

SCG believes that High Value Added Products and Services (HVA) could provide great benefits for the business and for consumers' quality of life. SCG continuously supports innovation development. Thus, Intellectual Property (IP) management plays a crucial role in risk mitigation and business opportunities enhancement. The Organization has established IP division at corporate level and business unit level to prevent SCG from infringing others or being infringed. This includes organizing IP trainings to provide knowledge and create understanding to employees.

Business Opportunities

After years of IP strategy implementation, SCG received "Asia IP Elite 2015" award for 2 consecutive years in IP Business Congress Asia 2015 conference held by Intellectual Asset Management (IAM), world leading magazine known for strategic IP management. This award has truly represented SCG as an ASEAN leader in intellectual property and allows the organization to create more opportunities in introducing new products and building trust among business partners.

Hazard Risk

6. Drought in Thailand / Mitigation Plans

This year Thailand faces severe drought situation and some areas may have more water shortage problems during dry season next year. SCG designated Corporate Business Continuity Management (BCM) unit and BCM of each business unit to monitor, assess, and communicate relevant information regarding the situation to affected companies and concerned persons. In this regard, they can be alerted and able to prepare relevant measures to cope with the situation according to Business Continuity Plan. In addition, SCG has announced more strict water saving measures. For the manufacturing process, SCG strictly adhere to the application of 3R concept (Reduce, Reuse/Recycle, Replenish) by reducing the amount of water usage, treating waste water using the most efficient water treatment technology, and reusing water where applicable.

Business Continuity Plan has been prepared and drill has been conducted. SCG also coordinates with related government organizations in order to support water shortage prevention project. For energy saving and environmental friendly building (green building), apart from using water saving lavatories and equipment, 100 percent recycled water from the pond in the headquarter office is used. Moreover, there is a campaign to build up consciousness of the SCG employees to save water in their daily lives.

Business Opportunities

SCG is aware of the effect from the severe drought this year. Therefore, SCG initiated project “SCG: United against Drought” to help the communities by providing large tanks and installing them at public such as school, temple, and community offices. In addition to the immediate relived measures, SCG organized a campaign to promote water saving among Thai people through water-saving sanitary wares. These activities presented a chance for SCG to introduce products leading to sales growth.

Input Risk

7. Labor Shortage and Rising Wages Risk / Mitigation Plans

As the world including Thailand is entering aging society phase, and the size of working-age population is starting to fall off, labor shortage has become a potential threat that can affect labor-intensive businesses and lead to competition for labor and increases in wages. Encouraged by the labor shortage problem especially in the vocational field in Thailand, SCG has initiated the prototype project “Specialists...the Maker of the Nation Project” to elevate the status of vocational students to “skilled professionals.” Under this program, they are both thinkers and practitioners who will serve as a driving force for a steady development of the country. The project also sets out to prepare vocational personnel for the advent of the ASEAN Economic Community to ensure their success.

In addition, relationship-building with universities and other institutions in ASEAN has been continuously performed, with university professors invited to learn more about SCG Thailand and the recruitment of top university students as interns or employees.

Business Opportunities

Labor shortage is a serious issue for property developers. As a result, a number of developers have started looking for prefabricated construction technology to shorten the construction time and lessen labor required. SCG HEIM has established a constant cooperation with property developers in introducing modular houses to their projects, which opens up new business opportunities for SCG.

8. Fluctuation of Fuel and Major Raw Material Price risks / Mitigation Plans

The continuous decrease in the global crude oil prices due to excess supplies has resulted in a drop in energy and commodity prices such as naphtha and fuel oil, which benefits businesses as the production cost is reduced. However, in the long run, risks of energy and commodity prices rebound are still present and production cost can be negatively impacted. As a result, SCG has designated a team of analysts who monitor and assess trends in fuel and major raw material prices to formulate sales plans, specify marketing strategies, and manage inventory at an appropriate level. Moreover, SCG has applied hedging instrument to reduce risks from commodities price fluctuation and maintain its costs to be competitive in the global market.

As for 2015, due to the fall of crude oil, the price of naphtha, a major raw material of SCG Chemicals, remained low. At the same time, as the prices of coal and fuel oil, main energy sources for SCG Cement-Building Materials and SCG Packaging, showed no sign of soaring, the Commodity Price Risk Management Committee has adjusted risk management strategy to suit with the changing circumstances.

Business Opportunities

SCG has developed high value added (HVA) products and services that minimize energy consumption, reduce business production cost and meet customers' needs. For examples, SCG Cement has introduced a new hybrid-formula cement in which consume less energy during combustion and requires less natural resources. 'The NEST,' the first Energy Plus house in ASEAN countries to have the capacity to generate more electricity than the needed amount, and Emisspro®, a coating substance for energy-saving burners. The substance was developed out of an attempt to achieve more efficient energy consumption, which led to research and development, and eventual technology licensing business for SCG.

Process Risk

9. Supply Chain Risks / Mitigation Plans

SCG considers all risk factors throughout the supply chain, start from raw material procurement, materials and equipment employed in the production and transportation, to sales and delivery of products and services. This is because any misalignment in the supply chain management can affect the confidence of consumers and other stakeholders as well as impact future operations. Therefore, to manage these risk factors, SCG has employed various instruments and risk assessment methodologies. This includes the assessment of supply chain disruption risks through Business Continuity Management process by prioritizing risks and management capabilities. The "Spend Analysis" that categorizes key production expenses and develops

management strategies that supports the identification of key business partners based on business, environmental, and social risks, and the development of business partners driven by the concept of sustainable supply chains.

Business Opportunities

SCG's greater overseas business expansion and product variety have increased the operation complexity. Therefore, effective supply chain management has become crucial as it contributes to the reduction of administrative expenses, the increase of customer satisfactions and the escalation of sales growth.

10. Human Resources Management and Capability Risks / Mitigation Plans

In preparing the human resources readiness to accommodate future business expansion, SCG has consistently improved its human resources management to better align with its business strategies. For examples, workforce preparation program for future business expansion has been developed using Strategic Workforce Planning, employee competency development, and a talent management system, which takes holistic care of employees in various aspects. Those aspects include wages, remuneration, personal growth, development as well as the assignment of tasks that are commensurate with employees' talent. As for employee competency development, employees at each level will also be given an opportunity to develop their business knowledge through courses suitable for employees at each level that SCG offers.

Business Opportunities

In recruiting SCG staff in overseas operations to accommodate overseas business expansion, SCG attracts prospective employees to join the Organization through various means. These include establishing the SCG Brand as "Employer of Choice", engaging in campus recruitments in leading educational institutes, granting local students and staff scholarships from undergraduate to doctoral levels, and fostering good relations with the government sector, the private sector, communities, and leading companies in the countries that SCG has extended its investment to.

Financial Risk

11. Foreign Exchange Rates Fluctuation Risks / Mitigation Plans

SCG, as an organization that exportation is higher than importation, the appreciation of Thai Baht against US dollar could lead to a reduction in revenue from exportation and an increase in importation cost of major raw material such as naphtha, coal and waste paper. On the contrary, SCG receives benefits when the Thai Baht depreciates against US dollar. Throughout 2015, as a result of Thai Baht's continuing depreciation, SCG has maintained its counter measurement and

mitigation plan through matching revenue and expense in foreign currency (Natural Hedge). Besides, agreement with trading partners in using local currency at an appropriate level has been established. SCG's Financial Committee will consider using financial instruments to hedge foreign exchange rate exposure when appropriate.

Business Opportunities

As a result of Thai Baht and Indonesian Rupiah depreciation against US dollar as well as the slowdown of Thai economy, SCG has leveraged cross-currency competitiveness and focused on exportation to countries within and outside ASEAN, where appropriate.

Business Environment Risk

12. Risks from Economic Fluctuation in Countries of Investment / Mitigation Plans

Throughout 2015, commodity price in the global market declined significantly and the world's economy has slowed down due to a worse-than-expected slowdown in Chinese's economy. As a result, deceleration of economic growth in ASEAN countries was unavoidable. To mitigate such event, SCG has employed innovative or leading technology in developing high value added products and services (HVA) to maintain or improve margins, increased sales from export, and improved operational efficiency to reduce production costs. SCG has also evaluated and monitored risks in the countries where the organization has invested through an establishment of a Country Business Support Office (CBSO). Reports on significant risk events in each strategic country are presented quarterly to audit committee and top managements for country risk management and portfolio management. Under certain circumstances, SCG also conducts a Scenario Planning and Sensitivity Analysis to assess potential consequences from such incidents, and formulates appropriate risk management strategies based on a risk-return trade off analysis.

Business opportunities

Despite a downtrend in economic growth in Thailand and Indonesia, which resulted in a slow demand for cement and building material products, SCG foresees opportunities for business operations. Examples include development of new products to serve niche markets with appropriate promotional activities, accelerating sales from export to ASEAN and non-ASEAN countries to compensate for domestic slowdown as well as future investment opportunities.

13. Risks from Uncertainty of Myanmar Development / Mitigation Plans

Regardless of constant economic growth, Myanmar presents various uncertainties from country development perspective after the election. Examples of such uncertainties include change in government policies, currency fluctuation, unclear laws and regulations as well as minority unrest. As a result, SCG has taken various precautions in doing business in Myanmar, for

instance, a business continuity management (BCM), where supply chain analysis is applied to designate essential procedures, prioritize risks, and establish risk mitigating strategies. In addition, Emergency response plans have been established and regular drills conducted to respond to crisis.

Business opportunities

As one of the very first organization investing in Myanmar, SCG takes this opportunity to cooperate with related government agencies and other private sectors in proposing investment policy and appropriate regulations for foreign companies. Aside from business objectives, SCG has attempted to become a good citizen in Myanmar through various initiatives, promoting social and environmental responsibilities. One example is “SCG Sharing the Dream” project, which aims to cultivate good citizenship philosophy such as fairness and transparency through various youth educational support projects, fostering them to become good future leaders. Another example is “Sharing a Brighter Vision” project, which provided cataract surgery patients in rural Myanmar to bring back their happiness from regaining better visions.

Emerging Risk

Results from SCG risk analysis and assessment point out two key emerging risks; 1) risk from higher cost of energy in Thailand and 2) risk from lower level of Thailand’s potential economic growth compared to that of the past

Various sources have forecasted that major source of energy supply in Thailand is diminishing while demand for energy is on a rising trend, which would likely lead to an increase in energy and electricity prices impacting SCG’s energy cost. Therefore, emphasis has been placed on reducing energy risk. SCG established Energy Committee who is responsible for setting out and monitoring the organization’s energy policy to increase energy utilization efficiency. Additionally, the organization appointed a taskforce who is responsible for the exploration of both the main and alternative sources of energy that are also environmentally-friendly. Moreover, the organization has encouraged the use of technology that allows for the utilization of low-cost, but not commonly used energy, the production of electricity from process waste, along with the development of products that requires lower production cost per unit or reduces energy consumption when in use. All of the above efforts are to help the organization to appropriately manage energy consumption from various sources, secure cost advantage, and provide stability and flexibility for future business expansion. In response to the societal need for energy reduction, SCG has introduced

“SCG Green Building Solution”, the first and only building material manufacturing company in Thailand to provide a consultation on development of an eco-friendly and energy-efficient building.

The study on “Thailand’s New Normal” by Thailand Future Foundation shows that Thai economy could grow at a lower growth trajectory, compared to that of the past. It is expected that in the next decade, the growth potential is likely to be at an annual GDP of 3% (reduce from averaged of 5% in 2000-2010). Such a slower growth rate is due to the country’s structural change such as aging workforce, which impacts competitiveness capability, and the reduction from export and production sectors. At the same time, domestic spending is hurt by low farm income as a result of the falling price of agricultural commodities and high household debt. All of the above factors will likely impact revenue and cost of SCG’s operations in Thailand. To manage such risks, SCG has been focusing on initiatives such as increasing revenue from export and revenue proportion from ASEAN production base, accelerating the development of high value added product and service (HVA), and improving efficiency in supply chain management to reduce production cost, all of which are believed to contribute to the continuous and sustainable growth of the organization.

4. Assets Used in Operation

Total Assets

Total assets of The SCG as at 31 December 2015 were Baht 509,981 million of which 29 percent of them are current assets, comprising of cash and cash equivalents, short-term investment, trade accounts and notes receivable, and inventories. The rest (71 percent) are investments, property, plant and equipment.

Most assets shown in the financial statements of the Company and its subsidiaries were built by and belonged to the Company and its subsidiaries. SCG has no policy to place any assets as collateral.

Total assets can be classified according to main business units as follows:

	<u>2015</u>	<u>2014</u>	
SCG Cement-Building Materials	187,976	168,662	Million Baht
SCG Chemicals	185,583	183,884	Million Baht
SCG Packaging	83,218	73,987	Million Baht
Other	281,443	260,437	Million Baht

From the consolidated financial statements as at 31 December 2015, SCG's property, plant and equipment have carrying values of Baht 230,932 million, which are 45 percent of total assets.

Property, Plant and Equipment - Net

(in million Baht)

Business Unit	Land		Building		Machine and Others		Total	
	Dec 31, 15	Dec 31, 14	Dec 31, 15	Dec 31, 14	Dec 31, 15	Dec 31, 14	Dec 31, 15	Dec 31, 14
SCC	557	603	1,768	1,638	1,048	1,056	3,373	3,297
SCG Cement-Building	15,454	14,196	18,020	13,968	66,717	56,498	100,191	84,662
SCG Chemicals	2,877	2,870	5,209	5,190	66,275	67,066	74,361	75,126
SCG Packaging	2,406	2,140	6,752	6,039	44,947	39,327	54,105	47,506
Other	557	604	1,769	1,638	1,090	1,100	3,416	3,342
Consolidated Financial	20,361	18,777	31,386	26,202	179,185	160,494	230,932	205,473

Remark: Figures in financial statements are classified according to Business Groups before adjustment of inter-business transactions.

Intangible Assets

- Patent

At the end of 2015, SCG has 326 valid patents comprising 19 invention patents, 86 petty patents and 221 design patents. The number of patents owned by the Siam Cement Plc., SCG Chemicals, SCG Packaging and SCG Cement-Building Materials are 2 patents, 21 patents, 38 patents, and 265 patents, consecutively.

List of valid patents owned by companies and subsidiaries are listed below:

No.	Patent Number	Registration Date	Assignee	Application Number	Filing Date	Patent/Petty Patent	Design Patent	Expiry Date
<u>The Siam Cement PLC.</u>								
1	18017	Jan 11, 2005	The Siam Cement Plc.	9901000939 (049446)	Mar 22, 1999	A process for producing pozzolan from kaolin clay and rice husk ash	-	Mar 21, 2019
2	19730	Mar 21, 2006	The Siam Cement Plc.	9901000940 (049447)	Mar 22, 1999	A manufacturing process for cement products and/or concrete with ceramic coating	-	Mar 21, 2019
<u>SCG Chemicals</u>								
3	37715	Oct 25, 2013	SCG Chemicals Co., Ltd.	1102000374	Feb 4, 2011	-	Container for plant growing	Feb 3, 2021
4	37716	Oct 25, 2013	SCG Chemicals Co., Ltd.	1102000373	Feb 4, 2011	-	Container for plant growing	Feb 3, 2021
5	47452	Dec 17, 2015	SCG Chemicals Co., Ltd.	1102002684	Sep 6, 2011	-	Shelter	Sep 5, 2021

No.	Patent Number	Registration Date	Assignee	Application Number	Filing Date	Patent/Petty Patent	Design Patent	Expiry Date
6	Petty Patent 6747	Dec 9, 2011	SCG Chemicals Co., Ltd.	0903000414	Apr 28, 2009	Fire retardant polyethylene compound composition and product formed from the fire retardant polyethylene compound composition	-	Apr 27, 2019
7	Petty Patent 7762	Jan 16, 2013	SCG Chemicals Co., Ltd.	1103000619	Jun 21, 2011	Water container	-	Jun 20, 2021
8	102712853B (China)	Dec 24, 2014	SCG Chemicals Co., Ltd.	200980163165.8	Jun 25, 2012	Process for reducing the bromine index of a hydrocarbon	-	Dec 24, 2029
9	11201403491T (Singapore)	Jul 9, 2014	SCG Chemicals Co., Ltd.	11201403491T	Jun 20, 2014	Modification of layered double hydroxides	-	Dec 18, 2032 Dec 18, 2012 (PCT filing date)
10	2816051 B1 (European)	Nov 4, 2015	SCG Chemicals Co., Ltd.	13172833.9	Jun 19, 2013	Catalyst for olefin polymerization, method for its preparation and use	-	Jun 19, 2033
11	Petty Patent 9803	Apr 22, 2015	SCG Chemicals Co., Ltd., Thammasart University	1403000748	Jul 9, 2014	DIY spacer	-	Jul 8, 2024
12	Petty Patent 10718	Nov 11, 2015	SCG Chemicals Co., Ltd. and RIL 1996 Co., Ltd.	1403000584	Jun 11, 2014	Process for the sludge management using earthworms	-	Jun 10, 2024

No.	Patent Number	Registration Date	Assignee	Application Number	Filing Date	Patent/Petty Patent	Design Patent	Expiry Date
13	I500721 (Taiwan)	Jul 29, 2015	SCG Chemicals Co., Ltd. and Siam Refractory Industry Co., Ltd.	20130107293	Mar 1, 2013	High emissivity coating compositions and manufacturing processes therefore	-	Feb 28, 2033
14	28126	Jun 30, 2010	Thai Polyethylene Co., Ltd.	0101003359	Aug 21, 2001	Titanium catalyst composition for ethylene polymerization and process using thereof	-	Aug 20, 2021
15	60106 (Iran)	Jul 22, 2009	Thai Polyethylene Co., Ltd.	387091337	Dec 20, 2008	Method for preparing a catalyst component for ethylene	-	Dec 19, 2027
16	33133	Jul 6, 2012	Nawaplastic Industries Co., Ltd.	0702000288	Feb 2, 2007	-	Cross section	Feb 1, 2017
17	33232	Jul 23, 2012	Nawaplastic Industries Co., Ltd.	0702000285	Feb 2, 2007	-	Cross section	Feb 1, 2017
18	33233	Jul 23, 2012	Nawaplastic Industries Co., Ltd.	0702000287	Feb 2, 2007	-	Cross section	Feb 1, 2017
19	38304	Nov 29, 2013	Nawaplastic Industries Co., Ltd.	1002003129	Oct 29, 2010	-	Base element for container for growing plant	Oct 28, 2020
20	Petty Patent 9305	Nov 10, 2014	Nawaplastic Industries Co., Ltd.	1303000468	Apr 30, 2013	Decoration element	-	Apr 29, 2023
21	Petty Patent 9500	Jan 5, 2015	Nawaplastic Industries Co., Ltd.	1403000069	Jan 31, 2014	Frame for fast installation	-	Jan 30, 2024
22	Petty Patent 10535	Oct 9, 2015	Nawaplastic Industries Co., Ltd.	1403000468	May 15, 2014	Deck structure	-	May 14, 2024

No.	Patent Number	Registration Date	Assignee	Application Number	Filing Date	Patent/Petty Patent	Design Patent	Expiry Date
23	Petty Patent 10795	Nov 26, 2015	Nawaplastic Industries Co., Ltd.	1403001034	Sep 5, 2014	Lathing system	-	Sep 4, 2024
SCG Packaging								
24	35489	Apr 10, 2013	SCG Packaging Plc.	0802003034	Oct 3, 2008	-	Container Blank	Oct 2, 2018
25	35918	Jun 18, 2013	SCG Packaging Plc.	0802003033	Oct 3, 2008	-	Container Blank	Oct 2, 2018
26	36654	Aug 19, 2013	SCG Packaging Plc.	0902000310	Feb 11, 2009	-	Folding Chair	Feb 10, 2019
27	37375	Oct 4, 2013	SCG Packaging Plc.	0902003323	Oct 29, 2009	-	Container	Oct 28, 2019
28	37766	Oct 29, 2013	SCG Packaging Plc.	0902001102	Oct 14, 2009	-	Seat	Oct 13, 2019
29	38819	Jan 17, 2014	SCG Packaging Plc.	0902001873	Jun 23, 2009	-	Table	Jun 22, 2019
30	39942	May 6, 2014	SCG Packaging Plc.	1002003047	Oct 20, 2010	-	Display	Oct 19, 2020
31	40389	Jun 11, 2014	SCG Packaging Plc.	1102003701	Dec 28, 2011	-	Carton Blank	Dec 27, 2021
32	40434	Jun 16, 2014	SCG Packaging Plc.	1102003702	Dec 28, 2011	-	Carton Blank	Dec 27, 2021
33	45914	Sep 15, 2015	SCG Packaging Plc.	0902001103	Oct 14, 2009	-	Seat Blank	Oct 13, 2019
34	45915	Sep 15, 2015	SCG Packaging Plc.	0902001874	Jun 23, 2009	-	Seat	Jun 22, 2019
35	45916	Sep 15, 2015	SCG Packaging Plc.	0902001908	Jun 23, 2009	-	Table	Jun 22, 2019
36	45917	Sep 15, 2015	SCG Packaging Plc.	0902000311	Feb 11, 2009	-	Folding Chair Blank	Feb 10, 2019
37	46617	Oct 26, 2015	SCG Packaging Plc.	1202002433	Sep 14, 2012	-	Container Blank	Sep 13, 2022
38	46752	Oct 30, 2015	SCG Packaging Plc.	1002003046	Oct 20, 2010	-	Stand Blank	Oct 19, 2020
39	Petty Patent 3439	Aug 21, 2007	SCG Packaging Plc.	0603000102	Jan 26, 2006	Splicer for Single Face	-	Jan 25, 2016

No.	Patent Number	Registration Date	Assignee	Application Number	Filing Date	Patent/Petty Patent	Design Patent	Expiry Date
40	Petty Patent 6021	Mar 2, 2011	SCG Packaging Plc.	0603001927	Dec 7, 2006	Pressure Testing Equipment	-	Dec 6, 2016
41	Petty Patent 6859	Jan 13, 2012	SCG Packaging Plc.	0903001383	Nov 25, 2009	Mobile Pressure Testing Equipment	-	Nov 24, 2017
42	Petty Patent 7328	Jul 20, 2012	SCG Packaging Plc.	1003000688	Jul 30, 2010	Pallet	-	Jul 29, 2016
43	Petty Patent 8877	May 23, 2014	SCG Packaging Plc.	0803001134	Sep 15, 2008	Bolt	-	Sep 14, 2016
44	Petty Patent 9259	Oct 24, 2014	SCG Packaging Plc. Khon Khan University Thailand Research Fund	1203000685	Jun 29, 2012	Geopolymer from fly ash and biomass ash which obtained from fluidized bed reactor mixing with fly ash from coal and gypsum combustion	-	Jun 28, 2018
45	Petty Patent 10340	Sep 4, 2015	SCG Packaging Plc. The National Science and Technology Development Agency	1103000736	Jul 28, 2011	Method of Pulp Treatment with Enzyme in Refining Step for Papermaking Process	-	Jul 27, 2017
46	Petty Patent 4196	Apr 29, 2008	Siam Kraft Industry Co., Ltd.	0603000103	Jan 26, 2006	Motion detector for slow speed machine	-	Jan 25, 2016
47	Petty Patent 4324	Jun 27, 2008	Siam Kraft Industry Co., Ltd.	0603001675	Oct 17, 2006	Wire twist machine	-	Oct 16, 2016



No.	Patent Number	Registration Date	Assignee	Application Number	Filing Date	Patent/Petty Patent	Design Patent	Expiry Date
48	Petty Patent 10041	July 2, 2015	Siam Kraft Industry Co., Ltd.	1403000945	Aug 22, 2014	Wireless hygrometer	-	Aug 21, 2020
49	31692	Jan 17, 2012	Thai Containers Group Co., Ltd.	0702002359	Sep 11, 2007	-	Paper Splint	Sep 10, 2017
50	34441	Nov 29, 2012	Thai Containers Group Co., Ltd.	0702002360	Sep 11, 2007	-	Paper Splint Blank	Sep 10, 2017
51	34990	Feb 5, 2013	Thai Containers Group Co., Ltd.	0702001297	May 16, 2007	-	Paper Pallet	May 15, 2017
52	34991	Feb 5, 2013	Thai Containers Group Co., Ltd.	0702001298	May 16, 2007	-	Paper Pallet	May 15, 2017
53	34992	Feb 5, 2013	Thai Containers Group Co., Ltd.	0702001299	May 16, 2007	-	Paper Pallet	May 15, 2017
54	35765	May 28, 2013	Thai Containers Group Co., Ltd.	0702002882	Oct 31, 2007	-	Carton Blank	Oct 30, 2017
55	35766	May 28, 2013	Thai Containers Group Co., Ltd.	0702002883	Oct 31, 2007	-	Carton Blank	Oct 30, 2017
56	35767	May 28, 2013	Thai Containers Group Co., Ltd.	0702003392	Dec 21, 2007	-	Container Blank	Dec 20, 2017
57	36314	Jul 26, 2013	Thai Containers Group Co., Ltd.	0702003153	Nov 28, 2007	-	Carton Blank	Nov 27, 2017
58	Petty Patent 3724	Oct 15, 2007	Thai Containers Group Co., Ltd.	0703000328	Mar 16, 2007	Equipment for keeping and delaminate backing sheet of Black Tape	-	Mar 15, 2017
59	Petty Patent 4714	Jan 28, 2009	Thai Containers Group Co., Ltd.	0803000764	Jun 12, 2008	Box Partition	-	Jun 11, 2016
60	Petty Patent 9838	Apr 28, 2015	Thai Containers Group Co., Ltd.	1403000528	May 30, 2014	Water-proof sheath for pallet leg	-	May 29, 2020
61	Petty Patent 3723	Oct 15, 2007	Thai Containers Songkhla (1994) Co., Ltd.	0603000791	Jun 19, 2006	Slitter Knife	-	Jun 18, 2016

No.	Patent Number	Registration Date	Assignee	Application Number	Filing Date	Patent/Petty Patent	Design Patent	Expiry Date
SCG Cement-Building Materials								
62	Petty Patent 8528	Dec 11, 2013	SCI Eco Services Co., Ltd.	1203000839	Aug 10, 2012	Solid as fuel	-	Aug 9, 2018
63	27668	Mar 17, 2010	The Concrete Products and Aggregate Co., Ltd.	0701002440	May 17, 2007	Air brake system for motor	-	Mar 17, 2026
64	27669	Mar 17, 2010	The Concrete Products and Aggregate Co., Ltd.	0702001549	Jun 12, 2007	-	Hydraulic Concrete Bucket Conveyor	Jun 11, 2017
65	33783	Sep13, 2012	The Concrete Products and Aggregate Co., Ltd.	0802001402	Apr 23, 2008	-	Concrete Cube	Apr 22, 2018
66	40409	Jun 13, 2014	SCG Cement Co., Ltd.	0902001876	Jun 23, 2009	-	Mortar injection tip	Jun 22, 2019
67	40433	Jun 16, 2014	SCG Cement Co., Ltd.	0902001877	Jun 23, 2009	-	Mortar injection tip	Jun 22, 2019
68	40467	Jun 18, 2014	SCG Cement Co., Ltd.	0902001878	Jun 23, 2009	-	Mortar injection tip	Jun 22, 2019
69	Petty Patent 3109	Mar 2, 2007	SCG Cement Co., Ltd.	0603000610	May 8, 2006	Producing compressive strength cement by using fluorspar	-	May 7, 2016
70	Petty Patent 3258	Jun 12, 2007	SCG Cement Co., Ltd.	0603001634	Oct 6, 2006	Mixture substance for mining work	-	Oct 5, 2016
71	Petty Patent 4831	Apr 20, 2009	SCG Cement Co., Ltd.	0803001101	Jul 14, 2008	Round column surface polishing Equipment	-	Jul 13, 2018
72	Petty Patent 6227	May 23, 2011	SCG Cement Co., Ltd.	0803000151	Jan 21, 2008	Equipment for use in cutting or extraction of construction materials.	-	Jan 21, 2018

No.	Patent Number	Registration Date	Assignee	Application Number	Filing Date	Patent/Petty Patent	Design Patent	Expiry Date
73	Petty Patent 7048	Mar 23, 2012	SCG Cement Co., Ltd.	0903000048	Jan 21, 2008	Method and testing kit for the closed packaging.	-	Jan 20, 2017
74	Petty Patent 7049	Mar 23, 2012	SCG Cement Co., Ltd.	0803000884	Jul 14, 2008	Dust-free by water-curtain	-	Jul 14, 2017
75	Petty Patent 8391	Oct 4, 2013	SCG Cement Co., Ltd.	1303000220	Mar 1, 2013	Equipment used to test the strength of the concrete blocks.	-	Feb 29, 2019
76	Petty Patent 1303001469	Oct 27, 2014	SCG Cement Co., Ltd.	1303001469	Nov 21, 2013	Mortar plaster reology testing apparatus	-	Nov 20, 2023
77	US8864903	Oct 21, 2014	SCG Cement Co., Ltd.	US13/717,054	Oct 29, 2012	Composite plaster including an organic additive (USA)	-	Oct 28, 2032
78	AU2012275037	Dec 24, 2014	SCG Cement Co., Ltd.	AU2012275037	Dec 24, 2012	Composite plaster including an organic additive (Australia)	-	Oct 28, 2032
79	20285	Jul 28, 2006	The Siam Refractory Industry Co., Ltd.	0301003134 (084687)	Aug 22, 2003	Procedure for packaging basic brick to improve ventilation system	-	Aug 21, 2023
80	25337	Jan 23, 2009	The Siam Refractory Industry Co., Ltd.	0301003133	Aug 22, 2003	Spraying or Mortar Refractory	-	Aug 21, 2023
81	Petty Patent 8528	Dec 11, 2013	SCI Eco Services Co., Ltd.	1203000839	Aug 10, 2012	Solid fuel product that is made from waste	-	Aug 9, 2018

No.	Patent Number	Registration Date	Assignee	Application Number	Filing Date	Patent/Petty Patent	Design Patent	Expiry Date
82	29833	Mar 31, 2011	The Siam Fibre-Cement Co., Ltd.	0602001170	Apr 28, 2006	-	Roof Tile	Apr 27, 2016
83	Petty Patent 8721	Mar 17, 2014	The Siam Fibre-Cement Co., Ltd.	1303001128	Sep 24, 2013	Installation of plaques	-	Sep 23, 2023
84	28235	Jul 16, 2010	SCG Building Materials Co., Ltd.	0602002130	Jul 25, 2006	-	Rood Ridge	Jul 24, 2016
85	28292	Jul 23, 2010	SCG Building Materials Co., Ltd.	0602002133	Jul 25, 2006	-	Rood Ridge	Jul 24, 2016
86	28293	Jul 23, 2010	SCG Building Materials Co., Ltd.	0602002131	Jul 25, 2006	-	Rood Ridge	Jul 24, 2016
87	28294	Jul 23, 2010	SCG Building Materials Co., Ltd.	0602002132	Jul 25, 2006	-	Roof Tile	Jul 24, 2016
88	28295	Jul 23, 2010	SCG Building Materials Co., Ltd.	0602002129	Jul 25, 2006	-	Rood Ridge	Jul 24, 2016
89	29607	Feb 16, 2011	SCG Building Materials Co., Ltd.	0602003695	Dec 27, 2006	-	Corrugate roof tile	Dec 26, 2016
90	29693	Mar 7, 2011	SCG Building Materials Co., Ltd.	0602003696	Dec 27, 2006	-	Flat roof tile	Dec 26, 2016
91	29694	Mar 7, 2011	SCG Building Materials Co., Ltd.	0602003697	Dec 27, 2006	-	Flat roof tile	Dec 26, 2016
92	29695	Mar 7, 2011	SCG Building Materials Co., Ltd.	0602003698	Dec 27, 2006	-	Flat roof tile	Dec 26, 2016
93	29696	Mar 7, 2011	SCG Building Materials Co., Ltd.	0602003699	Dec 27, 2006	-	Flat roof tile	Dec 26, 2016
94	29697	Mar 7, 2011	SCG Building Materials Co., Ltd.	0602003705	Dec 27, 2006	-	Fascia Bracket	Dec 26, 2016
95	29698	Mar 7, 2011	SCG Building Materials Co., Ltd.	0602003706	Dec 27, 2006	-	Fascia Bracket	Dec 26, 2016
96	29819	Mar 31, 2011	SCG Building Materials Co., Ltd.	0602003700	Dec 27, 2006	-	First row roof tile	Dec 26, 2016
97	30006	May 12, 2011	SCG Building Materials Co., Ltd.	0602002134	Jul 25, 2006	-	Round Ridge	Jul 24, 2016
98	30023	May 23, 2011	SCG Building Materials Co., Ltd.	0602003702	Dec 27, 2006	-	Fascia Bracket	Dec 26, 2016
99	32678	May 16, 2012	SCG Building Materials Co., Ltd.	0702002967	Nov 7, 2007	-	Construction material	Nov 6, 2017
100	32764	Jun 1, 2012	SCG Building Materials Co., Ltd.	0802003120	Oct 17, 2008	-	Growing unit	Oct 16, 2018
101	32919	Jun 20, 2012	SCG Building Materials Co., Ltd.	0702002667	Oct 5, 2007	-	Roof tile	Oct 4, 2017

No.	Patent Number	Registration Date	Assignee	Application Number	Filing Date	Patent/Petty Patent	Design Patent	Expiry Date
102	32920	Jun 22, 2012	SCG Building Materials Co., Ltd.	0702001035	Apr 10, 2007	-	Roof tile	Apr 9, 2017
103	33217	Jul 20, 2012	SCG Building Materials Co., Ltd.	0702000251	Jan 31, 2007	-	Curb	Jan 30, 2017
104	33218	Jul 20, 2012	SCG Building Materials Co., Ltd.	0702002417	Sep 13, 2007	-	Construction material	Sep 12, 2017
105	33219	Jul 20, 2012	SCG Building Materials Co., Ltd.	0702002410	Sep 13, 2007	-	Fence	Sep 12, 2017
106	33220	Jul 20, 2012	SCG Building Materials Co., Ltd.	0702002409	Sep 13, 2007	-	Fence	Sep 12, 2017
107	33221	Jul 20, 2012	SCG Building Materials Co., Ltd.	0702002668	Oct 5, 2007	-	Roof tile	Oct 4, 2017
108	33222	Jul 20, 2012	SCG Building Materials Co., Ltd.	0702001033	Apr 10, 2007	-	Roof tile	Apr 9, 2017
109	33520	Aug 17, 2012	SCG Building Materials Co., Ltd.	0702000123	Jan 12, 2007	-	Concrete block dividing unit	Jan 11, 2017
110	33521	Aug 17, 2012	SCG Building Materials Co., Ltd.	0702000122	Jan 12, 2007	-	Floor tile	Jan 11, 2017
111	33522	Aug 17, 2012	SCG Building Materials Co., Ltd.	0702000121	Jan 12, 2007	-	Concrete block dividing unit	Jan 11, 2017
112	33744	Sep 11, 2012	SCG Building Materials Co., Ltd.	0802000804	Mar 12, 2008	-	Construction Material	Mar 11, 2018
113	33745	Sep 11, 2012	SCG Building Materials Co., Ltd.	0702001034	Apr 10, 2007	-	Roof tile	Apr 9, 2017
114	34903	Jan 28, 2013	SCG Building Materials Co., Ltd.	0802000825	Mar 13, 2008	-	Washbasin	Mar 12, 2018
115	34975	Feb 4, 2013	SCG Building Materials Co., Ltd.	0702002966	Nov 7, 2007	-	Ridge	Nov 6, 2017
116	35904	Jun 14, 2013	SCG Building Materials Co., Ltd.	0802000826	Mar 13, 2008	-	Roof tile	Mar 12, 2018
117	35905	Jun 14, 2013	SCG Building Materials Co., Ltd.	0702002411	Sep 13, 2007	-	Fence	Sep 12, 2017
118	35906	Jun 14, 2013	SCG Building Materials Co., Ltd.	0702002413	Sep 13, 2007	-	Fence	Sep 12, 2017
119	35907	Jun 14, 2013	SCG Building Materials Co., Ltd.	0802001448	Apr 25, 2008	-	Tile	Apr 24, 2018
120	35919	Jun 18, 2013	SCG Building Materials Co., Ltd.	0702002414	Sep 13, 2007	-	Fence	Sep 12, 2017

No.	Patent Number	Registration Date	Assignee	Application Number	Filing Date	Patent/Petty Patent	Design Patent	Expiry Date
121	35920	Jun 18, 2013	SCG Building Materials Co., Ltd.	0802001449	Apr 25, 2008	-	Tile	Apr 24, 2018
122	35921	Jun 18, 2013	SCG Building Materials Co., Ltd.	0802001447	Apr 25, 2008	-	Growing unit	Apr 24, 2018
123	35922	Jun 18, 2013	SCG Building Materials Co., Ltd.	0802001450	Apr 25, 2008	-	Tile	Apr 24, 2018
124	35923	Jun 18, 2013	SCG Building Materials Co., Ltd.	0802001451	Apr 25, 2008	-	Tile	Apr 24, 2018
125	35966	Jun 25, 2013	SCG Building Materials Co., Ltd.	0802000805	Mar 12, 2008	-	Block	Mar 11, 2018
126	35970	Jun 25, 2013	SCG Building Materials Co., Ltd.	0802000823	Mar 13, 2008	-	Bidet	Mar 12, 2018
127	35971	Jun 25, 2013	SCG Building Materials Co., Ltd.	0802000824	Mar 13, 2008	-	Sanitary ware	Mar 12, 2018
128	36132	Jul 15, 2013	SCG Building Materials Co., Ltd.	0902000057	Jan 16, 2009	-	Roof tile	Jan 15, 2019
129	36133	Jul 15, 2013	SCG Building Materials Co., Ltd.	0902000506	Feb 25, 2009	-	Roof tile	Feb 24, 2019
130	36134	Jul 15, 2013	SCG Building Materials Co., Ltd.	0902000507	Feb 25, 2009	-	Roof tile	Feb 24, 2019
131	36367	Jul 31, 2013	SCG Building Materials Co., Ltd.	0902000056	Jan 16, 2009	-	Roof tile	Jan 15, 2019
132	36369	Jul 31, 2013	SCG Building Materials Co., Ltd.	0902000505	Feb 25, 2009	-	Roof tile	Feb 24, 2019
133	36779	Aug 28, 2013	SCG Building Materials Co., Ltd.	0902000164	Jan 28, 2009	-	Fixing device	Jan 27, 2019
134	36780	Aug 28, 2013	SCG Building Materials Co., Ltd.	0902000165	Jan 28, 2009	-	Fixing device	Jan 27, 2019
135	38254	Nov 28, 2013	SCG Building Materials Co., Ltd.	0902000163	Jan 28, 2009	-	Fixing device	Jan 27, 2019
136	38303	Nov 29, 2013	SCG Building Materials Co., Ltd.	0802000827	Mar 13, 2008	-	Wall tile	Mar 12, 2018
137	38775	Jan 10, 2014	SCG Building Materials Co., Ltd.	1002002068	Aug 6, 2010	-	Packaging Design	Aug 5, 2020
138	41212	Aug 25, 2014	SCG Building Materials Co., Ltd.	1202001561	Jun 18, 2012	-	Markings on the packaging box	Jun 17, 2022
139	41279	Sep 1, 2014	SCG Building Materials Co., Ltd.	0802001975	Jun 25, 2008	-	Patterned floor	Jun 24, 2018
140	41280	Sep 1, 2014	SCG Building Materials Co., Ltd.	0802003122	Oct 17, 2008	-	Patterned floor	Oct 16, 2018

No.	Patent Number	Registration Date	Assignee	Application Number	Filing Date	Patent/Petty Patent	Design Patent	Expiry Date
141	41281	Sep 1, 2014	SCG Building Materials Co., Ltd.	0802001979	Jun 25, 2008	-	Patterned floor	Jun 24, 2018
142	41282	Sep 1, 2014	SCG Building Materials Co., Ltd.	0802001976	Jun 25, 2008	-	Patterned floor	Jun 24, 2018
143	41283	Sep 1, 2014	SCG Building Materials Co., Ltd.	0802003236	Oct 27, 2008	-	Patterned floor	Oct 26, 2018
144	41284	Sep 1, 2014	SCG Building Materials Co., Ltd.	0802001982	Jun 25, 2008	-	Patterned floor	Jun 24, 2018
145	41285	Sep 1, 2014	SCG Building Materials Co., Ltd.	0802003237	Oct 27, 2008	-	Patterned floor	Oct 26, 2018
146	41286	Sep 1, 2014	SCG Building Materials Co., Ltd.	0802002776	Sep 15, 2008	-	Patterned floor	Sep 14, 2018
147	41287	Sep 1, 2014	SCG Building Materials Co., Ltd.	0802001978	Jun 25, 2008	-	Patterned floor	Jun 24, 2018
148	41288	Sep 1, 2014	SCG Building Materials Co., Ltd.	0802003121	Oct 17, 2008	-	Patterned floor	Oct 16, 2018
149	41289	Sep 1, 2014	SCG Building Materials Co., Ltd.	0802003239	Oct 27, 2008	-	Patterned floor	Oct 26, 2018
150	41290	Sep 1, 2014	SCG Building Materials Co., Ltd.	0802002927	Sep 26, 2008	-	Patterned floor	Sep 25, 2018
151	41291	Sep 1, 2014	SCG Building Materials Co., Ltd.	0802002929	Sep 26, 2008	-	Patterned floor	Sep 25, 2018
152	41292	Sep 1, 2014	SCG Building Materials Co., Ltd.	0802001981	Jun 25, 2008	-	Patterned floor	Jun 24, 2018
153	41293	Sep 1, 2014	SCG Building Materials Co., Ltd.	0802003621	Dec 9, 2008	-	Patterned floor	Dec 8, 2018
154	41294	Sep 1, 2014	SCG Building Materials Co., Ltd.	0802003235	Oct 27, 2008	-	Patterned floor	Oct 26, 2018
155	41295	Sep 1, 2014	SCG Building Materials Co., Ltd.	0802002451	Aug 15, 2008	-	Patterned floor	Aug 14, 2018
156	41296	Sep 1, 2014	SCG Building Materials Co., Ltd.	0802003536	Nov 27, 2008	-	Patterned floor	Nov 26, 2018
157	41297	Sep 1, 2014	SCG Building Materials Co., Ltd.	0802003238	Oct 27, 2008	-	Patterned floor	Oct 26, 2018
158	41298	Sep 1, 2014	SCG Building Materials Co., Ltd.	0802001977	Jun 25, 2008	-	Patterned floor	Jun 24, 2018
159	41299	Sep 1, 2014	SCG Building Materials Co., Ltd.	0802002928	Sep 26, 2008	-	Patterned floor	Sep 25, 2018
160	41300	Sep 1, 2014	SCG Building Materials Co., Ltd.	0802001980	Jun 25, 2008	-	Patterned floor	Jun 24, 2018
161	41301	Sep 1, 2014	SCG Building Materials Co., Ltd.	0802003622	Dec 9, 2008	-	Patterned floor	Dec 8, 2018

No.	Patent Number	Registration Date	Assignee	Application Number	Filing Date	Patent/Petty Patent	Design Patent	Expiry Date
162	41302	Sep 1, 2014	SCG Building Materials Co., Ltd.	0802003124	Oct 17, 2008	-	Patterned floor	Oct 16, 2018
163	41303	Sep 1, 2014	SCG Building Materials Co., Ltd.	0802003234	Oct 27, 2008	-	Patterned floor	Oct 26, 2018
164	41304	Sep 1, 2014	SCG Building Materials Co., Ltd.	0802003123	Oct 17, 2008	-	Patterned floor	Oct 16, 2018
165	41305	Sep 1, 2014	SCG Building Materials Co., Ltd.	0802002233	July 25, 2008	-	Patterned floor	July 24, 2018
166	41306	Sep 1, 2014	SCG Building Materials Co., Ltd.	0802002772	Sep 15, 2008	-	Floor tile	Sep 14, 2018
167	41307	Sep 1, 2014	SCG Building Materials Co., Ltd.	0802002053	July 1, 2008	-	Parts of the building	Jun 30, 2018
168	41308	Sep 1, 2014	SCG Building Materials Co., Ltd.	0802003125	Oct 17, 2008	-	Patterned floor	Oct 16, 2018
169	41309	Sep 1, 2014	SCG Building Materials Co., Ltd.	0802002773	Sep 15, 2008	-	Floor tile	Sep 14, 2018
170	41310	Sep 1, 2014	SCG Building Materials Co., Ltd.	0802002052	July 1, 2008	-	Parts of the building	Jun 30, 2018
171	41311	Sep 1, 2014	SCG Building Materials Co., Ltd.	0802002931	Sep 26, 2008	-	Patterned floor	Sep 25, 2018
172	41313	Sep 2, 2014	SCG Building Materials Co., Ltd.	0702001171	Apr 27, 2007	-	Patterned floor	Apr 26, 2017
173	41314	Sep 2, 2014	SCG Building Materials Co., Ltd.	0702001172	Apr 27, 2007	-	Patterned floor	Apr 26, 2017
174	41315	Sep 2, 2014	SCG Building Materials Co., Ltd.	0702002860	Oct 26, 2007	-	Patterned floor	Oct 25, 2017
175	41316	Sep 2, 2014	SCG Building Materials Co., Ltd.	0702002862	Oct 26, 2007	-	Patterned floor	Oct 25, 2017
176	41317	Sep 2, 2014	SCG Building Materials Co., Ltd.	0702002863	Oct 26, 2007	-	Patterned floor	Oct 25, 2017
177	41318	Sep 2, 2014	SCG Building Materials Co., Ltd.	0702002864	Oct 26, 2007	-	Patterned floor	Oct 25, 2017
178	41319	Sep 2, 2014	SCG Building Materials Co., Ltd.	0702002865	Oct 26, 2007	-	Patterned floor	Oct 25, 2017
179	41320	Sep 2, 2014	SCG Building Materials Co., Ltd.	0702002993	Nov 14, 2007	-	Patterned floor	Nov 13, 2017
180	41362	Sep 4, 2014	SCG Building Materials Co., Ltd.	0702003357	Dec 18, 2007	-	Patterned floor	Dec 17, 2017
181	41363	Sep 4, 2014	SCG Building Materials Co., Ltd.	0802000800	Mar 12, 2008	-	Patterned floor	Mar 11, 2018
182	41365	Sep 4, 2014	SCG Building Materials Co., Ltd.	0802000801-2	Mar 12, 2008	-	Patterned floor	Mar 11, 2018

No.	Patent Number	Registration Date	Assignee	Application Number	Filing Date	Patent/Petty Patent	Design Patent	Expiry Date
183	41413	Sep 8, 2014	SCG Building Materials Co., Ltd.	0802000407	Feb 1, 2008	-	Patterned floor	Jan 31, 2018
184	41414	Sep 8, 2014	SCG Building Materials Co., Ltd.	0802000408	Feb 1, 2008	-	Patterned floor	Jan 31, 2018
185	41415	Sep 8, 2014	SCG Building Materials Co., Ltd.	0802000409	Feb 1, 2008	-	Patterned floor	Jan 31, 2018
186	41453	Sep 12, 2014	SCG Building Materials Co., Ltd.	0802000951	Mar 20, 2008	-	Patterned floor	Mar 19, 2018
187	41454	Sep 12, 2014	SCG Building Materials Co., Ltd.	0802000952	Mar 20, 2008	-	Patterned floor	Mar 19, 2018
188	41456	Sep 12, 2014	SCG Building Materials Co., Ltd.	0702002861	Oct 26, 2007	-	Patterned floor	Oct 25, 2017
189	41518	Sep 17, 2014	SCG Building Materials Co., Ltd.	0802000803	Mar 12, 2008	-	Patterned floor	Mar 11, 2018
190	41519	Sep 17, 2014	SCG Building Materials Co., Ltd.	0802000948	Mar 20, 2008	-	Patterned floor	Mar 19, 2018
191	41520	Sep 17, 2014	SCG Building Materials Co., Ltd.	0802000949	Mar 20, 2008	-	Patterned floor	Mar 19, 2018
192	41521	Sep 17, 2014	SCG Building Materials Co., Ltd.	0802000950	Mar 20, 2008	-	Patterned floor	Mar 19, 2018
193	41544	Sep 19, 2014	SCG Building Materials Co., Ltd.	0802000953	Mar 20, 2008	-	Patterned floor	Mar 19, 2018
194	41545	Sep 19, 2014	SCG Building Materials Co., Ltd.	0802001452	Apr 25, 2008	-	Patterned floor	Apr 24, 2018
195	41546	Sep 19, 2014	SCG Building Materials Co., Ltd.	0702003358	Dec 18, 2007	-	Patterned floor	Dec 17, 2017
196	41589	Sep 24, 2014	SCG Building Materials Co., Ltd.	0902001707	Jun 5, 2009	-	Patterned floor	Jun 4, 2019
197	41590	Sep 24, 2014	SCG Building Materials Co., Ltd.	0902000059	Jan 16, 2009	-	Patterned floor	Jan 15, 2019
198	41591	Sep 24, 2014	SCG Building Materials Co., Ltd.	0902000657	Mar 6, 2009	-	Patterned floor	Mar 5, 2019
199	41592	Sep 24, 2014	SCG Building Materials Co., Ltd.	0902000895	Mar 19, 2009	-	Patterned floor	Mar 18, 2019
200	41593	Sep 24, 2014	SCG Building Materials Co., Ltd.	0902001711	Jun 5, 2009	-	Patterned floor	Jun 4, 2019
201	41594	Sep 24, 2014	SCG Building Materials Co., Ltd.	0902001710	Jun 5, 2009	-	Patterned floor	Jun 4, 2019
202	41595	Sep 24, 2014	SCG Building Materials Co., Ltd.	0902001210	Apr 24, 2009	-	Patterned floor	Apr 23, 2019
203	41596	Sep 24, 2014	SCG Building Materials Co., Ltd.	0902003082	Oct 14, 2009	-	Patterned floor	Oct 13, 2019

No.	Patent Number	Registration Date	Assignee	Application Number	Filing Date	Patent/Petty Patent	Design Patent	Expiry Date
204	41597	Sep 24, 2014	SCG Building Materials Co., Ltd.	0902000898	Mar 19, 2009	-	Patterned floor	Mar 18, 2019
205	41598	Sep 24, 2014	SCG Building Materials Co., Ltd.	0902000896	Mar 19, 2009	-	Patterned floor	Mar 18, 2019
206	41599	Sep 24, 2014	SCG Building Materials Co., Ltd.	0902001709	Jun 5, 2009	-	Patterned floor	Jun 4, 2019
207	41600	Sep 24, 2014	SCG Building Materials Co., Ltd.	0902000897	Mar 19, 2009	-	Patterned floor	Mar 18, 2019
208	41601	Sep 24, 2014	SCG Building Materials Co., Ltd.	0902003084	Oct 14, 2009	-	Patterned floor	Oct 13, 2019
209	41602	Sep 24, 2014	SCG Building Materials Co., Ltd.	0902002939	Oct 2, 2009	-	Patterned floor	Oct 1, 2019
210	41603	Sep 24, 2014	SCG Building Materials Co., Ltd.	0902002937	Oct 2, 2009	-	Patterned floor	Oct 1, 2019
211	41604	Sep 24, 2014	SCG Building Materials Co., Ltd.	0902003085	Oct 14, 2009	-	Floor tile	Oct 13, 2019
212	41605	Sep 24, 2014	SCG Building Materials Co., Ltd.	0902001213	Apr 24, 2009	-	Wall tile	Apr 23, 2019
213	41606	Sep 24, 2014	SCG Building Materials Co., Ltd.	0902003083	Oct 14, 2009	-	Floor tile	Oct 13, 2019
214	41607	Sep 24, 2014	SCG Building Materials Co., Ltd.	0902002938	Oct 2, 2009	-	Patterned floor	Oct 1, 2019
215	41608	Sep 24, 2014	SCG Building Materials Co., Ltd.	0902001212	Apr 24, 2009	-	Wall tile	Apr 23, 2019
216	41609	Sep 24, 2014	SCG Building Materials Co., Ltd.	0902003079	Oct 14, 2009	-	Floor tile	Oct 13, 2019
217	41610	Sep 24, 2014	SCG Building Materials Co., Ltd.	0902003077	Oct 14, 2009	-	Floor tile	Oct 13, 2019
218	41611	Sep 24, 2014	SCG Building Materials Co., Ltd.	0902001211	Apr 24, 2009	-	Wall tile	Apr 23, 2019
219	41612	Sep 24, 2014	SCG Building Materials Co., Ltd.	0902003081	Oct 14, 2009	-	Floor tile	Oct 13, 2019
220	41613	Sep 24, 2014	SCG Building Materials Co., Ltd.	0902000658	Mar 6, 2009	-	Patterned floor	Mar 5, 2019
221	41614	Sep 24, 2014	SCG Building Materials Co., Ltd.	0902000899	Mar 19, 2009	-	Patterned floor	Mar 18, 2019
222	41615	Sep 24, 2014	SCG Building Materials Co., Ltd.	0902001708	Jun 5, 2009	-	Patterned floor	Jun 4, 2019
223	41616	Sep 24, 2014	SCG Building Materials Co., Ltd.	0902002192	July 22, 2009	-	Patterned floor	July 21, 2019
224	42796	Feb 6, 2015	SCG Building Materials Co., Ltd.	0802002774	Sep 15, 2008	-	Building material element	Sep 15, 2018

No.	Patent Number	Registration Date	Assignee	Application Number	Filing Date	Patent/Petty Patent	Design Patent	Expiry Date
225	42797	Feb 6, 2015	SCG Building Materials Co., Ltd.	0802002775	Sep 15, 2008	-	Building material element	Sep 15, 2018
226	42904	Feb 17, 2015	SCG Building Materials Co., Ltd.	0702002669	Oct 5, 2007	-	Eaves set	Oct 5, 2017
227	43851	Apr 21, 2015	SCG Building Materials Co., Ltd.	0802001446	Apr 25, 2008	-	Plant pot	Apr 25, 2018
228	43945	Apr 28, 2015	SCG Building Materials Co., Ltd.	0702002415	Sep 13, 2007	-	Fence element	Sep 13, 2017
229	43999	Apr 30, 2015	SCG Building Materials Co., Ltd.	0902000058	Jan 16, 2009	-	Roof tile	Jan 16, 2019
230	44000	Apr 30, 2015	SCG Building Materials Co., Ltd.	1002001832	Jul 16, 2010	-	Bracked element	Jul 16, 2020
231	44001	Apr 30, 2015	SCG Building Materials Co., Ltd.	1102000953	Mar 31, 2011	-	Floor tile	Mar 31, 2021
232	44004	Apr 30, 2015	SCG Building Materials Co., Ltd.	0902000162	Jan 28, 2009	-	Building material element	Jan 28, 2019
233	44005	Apr 30, 2015	SCG Building Materials Co., Ltd.	0902000160	Jan 28, 2009	-	Building material element	Jan 28, 2019
234	44006	Apr 30, 2015	SCG Building Materials Co., Ltd.	0902000055	Jan 16, 2009	-	Roof tile hook	Jan 16, 2019
235	44103	May 6, 2015	SCG Building Materials Co., Ltd.	1002003320	Nov 24, 2010	-	Bracked element	Nov 24, 2020
236	44449	May 29, 2015	SCG Building Materials Co., Ltd.	0902002806	Sep 14, 2009	-	Building material element	Sep 14, 2019
237	44640	Jun 12, 2015	SCG Building Materials Co., Ltd.	1002001831	Jul 16, 2010	-	Bracked element	Jul 16, 2020
238	44641	Jun 12, 2015	SCG Building Materials Co., Ltd.	1202001166	May 3, 2012	-	Bracked element	May 3, 2022
239	44678	Jun 16, 2015	SCG Building Materials Co., Ltd.	1002003319	Nov 24, 2010	-	Bracked element	Nov 24, 2020
240	44679	Jun 16, 2015	SCG Building Materials Co., Ltd.	1002003321	Nov 24, 2010	-	Bracked element	Nov 24, 2020
241	44791	Jun 25, 2015	SCG Building Materials Co., Ltd.	1102002691	Sep 6, 2011	-	Roof Bracked element	Sep 6, 2021
242	45721	Aug 31, 2015	SCG Building Materials Co., Ltd.	0902003078	Oct 14, 2009	-	Floor tile	Oct 14, 2019
243	45722	Aug 31, 2015	SCG Building Materials Co., Ltd.	1002003127	Oct 29, 2010	-	Roof tile	Oct 29, 2020
244	46635	Oct 27, 2015	SCG Building Materials Co., Ltd.	1002002675	Sep 24, 2010	-	Cover roof tile	Sep 24, 2020
245	46636	Oct 27, 2015	SCG Building Materials Co., Ltd.	1002002679	Sep 24, 2010	-	Cover roof tile	Sep 24, 2020

No.	Patent Number	Registration Date	Assignee	Application Number	Filing Date	Patent/Petty Patent	Design Patent	Expiry Date
246	46637	Oct 27, 2015	SCG Building Materials Co., Ltd.	1002002678	Sep 24, 2010	-	Cover roof tile	Sep 24, 2020
247	46638	Oct 27, 2015	SCG Building Materials Co., Ltd.	1002002676	Sep 24, 2010	-	Cover roof tile	Sep 24, 2020
248	46639	Oct 27, 2015	SCG Building Materials Co., Ltd.	1002000945	Apr 5, 2010	-	Roof tile	Apr 5, 2020
249	46640	Oct 27, 2015	SCG Building Materials Co., Ltd.	1002000944	Apr 5, 2010	-	Solar roof tile	Apr 5, 2020
250	46641	Oct 27, 2015	SCG Building Materials Co., Ltd.	1002000943	Apr 5, 2010	-	Concrete block	Apr 5, 2020
251	46642	Oct 27, 2015	SCG Building Materials Co., Ltd.	1002000725	Mar 15, 2010	-	Roof tile	Mar 15, 2020
252	46644	Oct 27, 2015	SCG Building Materials Co., Ltd.	1002002069	Aug 6, 2010	-	Building material element	Aug 6, 2020
253	46880	Nov 9, 2015	SCG Building Materials Co., Ltd.	0902000060	Jan 16, 2009	-	Movement element	Jan 16, 2019
254	46881	Nov 9, 2015	SCG Building Materials Co., Ltd.	0902000061	Jan 16, 2009	-	Movement element	Jan 16, 2019
255	46882	Nov 9, 2015	SCG Building Materials Co., Ltd.	1002002672	Sep 24, 2010	-	Cover roof tile	Sep 24, 2020
256	46883	Nov 9, 2015	SCG Building Materials Co., Ltd.	1002002673	Sep 24, 2010	-	Cover roof tile	Sep 24, 2020
257	46884	Nov 9, 2015	SCG Building Materials Co., Ltd.	1002002674	Sep 24, 2010	-	Cover roof tile	Sep 24, 2020
258	46885	Nov 9, 2015	SCG Building Materials Co., Ltd.	1002002677	Sep 24, 2010	-	Cover roof tile	Sep 24, 2020
259	47525	Dec 24, 2015	SCG Building Materials Co., Ltd.	1102002425	Aug 11, 2011	-	Fence materials	Aug 10, 2021
260	Petty Patent 5898	Jan 11, 2011	SCG Building Materials Co., Ltd.	1003000350	Apr 26, 2010	Ventilated cabinet	-	Apr 25, 2016
261	Petty Patent 6099	Mar 25, 2011	SCG Building Materials Co., Ltd.	0903000394	Apr 24, 2009	Connector for waste water in water closet	-	Apr 23, 2018
262	Petty Patent 6218	May 12, 2011	SCG Building Materials Co., Ltd.	1003000629	Jul 16, 2010	Isostatic punch	-	Jul 15, 2016

No.	Patent Number	Registration Date	Assignee	Application Number	Filing Date	Patent/Petty Patent	Design Patent	Expiry Date
263	Petty Patent 6326	Jun 24, 2011	SCG Building Materials Co., Ltd.	1103000369	Apr 12, 2011	Apparatus for roof attachment	-	Apr 11, 2017
264	Petty Patent 6471	Aug 11, 2011	SCG Building Materials Co., Ltd.	1103000368	Apr 12, 2011	Cementitious garden floor	-	Apr 11, 2017
265	Petty Patent 6618	Sep 26, 2011	SCG Building Materials Co., Ltd.	0703000485	Apr 27, 2007	Method for bathroom renovation without damage existing structure	-	Apr 25, 2017
266	Petty Patent 6888	Jan 26, 2012	SCG Building Materials Co., Ltd.	1103000083	Jan 28, 2011	ALC counter	-	Jan 27, 2017
267	Petty Patent 6889	Jan 26, 2012	SCG Building Materials Co., Ltd.	1103000303	Mar 25, 2011	Screen wall system	-	Mar 24, 2017
268	Petty Patent 7091	Apr 12, 2012	SCG Building Materials Co., Ltd.	1003001134	Nov 2, 2010	Glass mosaic	-	Nov 1, 2016
269	Petty Patent 7542	Oct 12, 2012	SCG Building Materials Co., Ltd.	1003001095	Oct 29, 2010	Vertical green panel	-	Oct 28, 2016
270	Petty Patent 7794	Jan 24, 2013	SCG Building Materials Co., Ltd.	1103001300	Dec 6, 2011	Rain filtering device	-	Dec 5, 2017
271	Petty Patent 7821	Feb 1, 2013	SCG Building Materials Co., Ltd.	1203001319	Nov 16, 2012	Air washing foot valve	-	Nov 15, 2018
272	Petty Patent 7898	Mar 4, 2013	SCG Building Materials Co., Ltd.	1203000406	Apr 24, 2012	Foundation system	-	Apr 23, 2018

No.	Patent Number	Registration Date	Assignee	Application Number	Filing Date	Patent/Petty Patent	Design Patent	Expiry Date
273	Petty Patent 8043	May 23, 2013	SCG Building Materials Co., Ltd.	0803001305	Oct 31, 2008	Cement for fiber cement board	-	Oct 30, 2018
274	Petty Patent 8140	Jul 15, 2013	SCG Building Materials Co., Ltd.	1103001301	Dec 6, 2011	Rain filtering device	-	Dec 5, 2017
275	Petty Patent 8297	Sep 16, 2013	SCG Building Materials Co., Ltd.	1003000717	Aug 6, 2010	Tile reverse device	-	Aug 5, 2016
276	Petty Patent 8327	Sep 24, 2013	SCG Building Materials Co., Ltd.	1303000079	Jan 24, 2013	Heat trapping device	-	Jan 23, 2019
277	Petty Patent 8328	Sep 24, 2013	SCG Building Materials Co., Ltd.	0903000393	Apr 24, 2009	Wall plate mounting systems and assemblies	-	Apr 23, 2019
278	Petty Patent 8637	Feb 12, 2014	SCG Building Materials Co., Ltd.	1303000336	Mar 27, 2013	Parts for installation frame	-	Mar 26, 2023
279	Petty Patent 8916	Jun 9, 2014	SCG Building Materials Co., Ltd.	1303000299	Mar 20, 2013	Power management unit in a building with electricity reserves in itself	-	Mar 19, 2023
280	Petty Patent 8917	Jun 9, 2014	SCG Building Materials Co., Ltd.	1303001089	Sep 16, 2013	Cropping systems help the particular weather conditions	-	Sep 15, 2023
281	Petty Patent 8940	Jun 23, 2014	SCG Building Materials Co., Ltd.	0903000195	Mar 6, 2009	Planting material	-	Mar 5, 2019
282	Petty Patent 9162	Sep 24, 2014	SCG Building Materials Co., Ltd.	1303001541	Dec 6, 2013	Set Adjustable Fan	-	Dec 5, 2023

No.	Patent Number	Registration Date	Assignee	Application Number	Filing Date	Patent/Petty Patent	Design Patent	Expiry Date
283	Petty Patent 9215	Oct 13, 2014	SCG Building Materials Co., Ltd.	1403000092	Feb 12, 2014	System of growing plants vertically	-	Feb 11, 2024
284	Petty Patent 9217	Oct 13, 2014	SCG Building Materials Co., Ltd.	1303001325	Oct 18, 2013	Set for roof ventilation	-	Oct 17, 2023
285	Petty Patent 9218	Oct 13, 2014	SCG Building Materials Co., Ltd.	1303001540	Dec 6, 2013	Equipment for the installation of the roof	-	Dec 5, 2023
286	Petty Patent 9306	Nov 10, 2014	SCG Building Materials Co., Ltd.	1203000444	May 3, 2012	Installation slabs	-	May 2, 2022
287	Petty Patent 9395	Dec 19, 2014	SCG Building Materials Co., Ltd.	0903000395	Apr 24, 2009	Production of ceramic tiles decorated with fluorescent paint over a fire	-	Apr 23, 2019
288	Petty Patent 9591	Feb 27, 2015	SCG Building Materials Co., Ltd.	1403000041	Jan 10, 2014	Instanted wall panel system for reduce heat transfer	-	Jan 10, 2024
289	Petty Patent 9592	Feb 27, 2015	SCG Building Materials Co., Ltd.	1403000991	Sep 1, 2014	Instance Concrete Bathroom floor panel	-	Sep 1, 2024
290	Petty Patent 10187	Aug 7, 2015	SCG Building Materials Co., Ltd.	1403000775	Jul 17, 2014	Process of cover gable setting	-	Jul 17, 2024
291	Petty Patent 10188	Aug 7, 2015	SCG Building Materials Co., Ltd.	1503000012	Jan 6, 2015	Roof Air flow set	-	Jan 6, 2025
292	Petty Patent 10438	Sep 28, 2015	SCG Building Materials Co., Ltd.	1403000776	Jul 17, 2014	Facial setting, eaves setting tools and process of that	-	Jul 17, 2024

No.	Patent Number	Registration Date	Assignee	Application Number	Filing Date	Patent/Petty Patent	Design Patent	Expiry Date
293	Petty Patent 10440	Sep 28, 2015	SCG Building Materials Co., Ltd.	1403001403	Oct 30, 2014	Cover roof end tools and process of that	-	Oct 30, 2024
294	Petty Patent 10441	Sep 28, 2015	SCG Building Materials Co., Ltd.	1303001502	Nov 28, 2013	Process of Fuel cell electric production for building	-	Nov 28, 2023
295	Petty Patent 10857	Dec 4, 2015	SCG Building Materials Co., Ltd.	1403001721	Dec 19, 2014	Plant pot on water surface	-	Dec19, 2024
296	China Patent ZL200710305114.7	Aug 17, 2011	SCG Building Materials Co., Ltd.	200710305114.7	Sep 20, 2007	Apparatus and Method for Forming a Pattern in Ceramic Tile or Slab with Prescribed Thickness	-	Sep 19, 2027
297	Taiwan Patent 1401146	Jul 11, 2013	SCG Building Materials Co., Ltd.	96135120	Sep 20, 2007	Apparatus and Method for Forming a Pattern in a Ceramic Tile or Slab with Prescribed Thickness	-	Sep 19, 2027
298	Europe Patent EP2065150A1	Mar 5, 2014	SCG Building Materials Co., Ltd.	07450217	Nov 27, 2007	A Device for Making Continuous Veining of Desired Patterns Extending Through the Entire Thickness of a Product, A Process of Making Thereof	-	Nov 26, 2027

No.	Patent Number	Registration Date	Assignee	Application Number	Filing Date	Patent/Petty Patent	Design Patent	Expiry Date
299	Germany Patent EP2036694	Mar 5, 2014	SCG Building Materials Co., Ltd.	07116535.1	Sep 20, 2007	Apparatus and Method for Forming a Pattern in a Ceramic Tile or Slab with Prescribed Thickness	-	Sep 19, 2027
300	30040	May 25, 2011	Siam CPAC Block Co., Ltd.	0602000284	Feb 2, 2006	-	Construction Materials	Feb 1, 2016
301	Petty Patent 10185	Aug 7, 2015	Thai Ceramic Co., Ltd.	1403000391	Apr 25, 2014	Material sheets	-	Apr 25, 2024
302	Petty Patent 10186	Aug 7, 2015	Thai Ceramic Co., Ltd.	1503000634	Apr 30, 2015	Adjust surfact and setting Trowel	-	Apr 30, 2025
303	Petty Patent 10439	Sep 28, 2015	Thai Ceramic Co., Ltd.	1503000635	Apr 30, 2015	Setting trowel	-	Apr 30, 2025
304	Petty Patent 10859	Dec 4, 2015	Thai Ceramic Co., Ltd.	1203001320	Nov 16, 2012	Process of sodium silicate producted by biomas	-	Nov16, 2022
305	Europe Patent EP1717000B1	Apr 1, 2009	Thai Ceramic Co., Ltd.	05450074.9	Apr 25, 2005	A device for making continuous veining of desired patterns extending through the entire thickness of a product and a process of making thereof	-	Apr 24, 2025
306	Petty Patent 7615	Nov 16, 2012	Cement Thai Home Service Co., Ltd.	1203000798	Jul 31, 2012	High-level display unit	-	Jul 30, 2018

No.	Patent Number	Registration Date	Assignee	Application Number	Filing Date	Patent/Petty Patent	Design Patent	Expiry Date
307	Petty Patent 7656	Dec 4, 2012	Cementhai Home Service Co., Ltd.	1203000799	Jul 31, 2012	Lifting device	-	Jul 30, 2018
308	40369	Jun 9, 2014	SCG Landscape Co.,Ltd	1102003513	Dec 6, 2011	-	Package	Dec 5, 2021
309	44002	Apr 30, 2015	SCG Landscape Co.,Ltd	1102003514	Dec 6, 2011	-	Floor and wall tile	Dec 6, 2021
310	44003	Apr 30, 2015	SCG Landscape Co.,Ltd	1102003515	Dec 6, 2011	-	Concrete block dividing unit	Dec 6, 2021
311	46643	Oct 27, 2015	SCG Landscape Co.,Ltd	1102003516	Dec 6, 2011	-	Seat	Dec 6, 2021
312	Petty Patent 8719	Mar 14, 2014	The CPAC Roof Tile Co., Ltd.	1203001424	Jun 1, 2012	Roof Tiles	-	May 31, 2022
313	Petty Patent 9981	Jun 12, 2015	The CPAC Roof Tile Co., Ltd.	1403000688	Jun 30, 2014	Roof Tiles	-	Jun 30, 2024
314	Petty Patent 3196	May 3, 2007	SCG Logistics Management Co., Ltd.	0603000996	Jul 28, 2006	Attachment Part of Truck for Loading	-	Jul 27, 2016
315	Petty Patent 3440	Aug 21, 2007	SCG Logistics Management Co., Ltd.	0603000139	Feb 3, 2006	Level Measurement Equipment of Barge Draft	-	Feb 2, 2016
316	Petty Patent 4011	Feb 1, 2008	SCG Logistics Management Co., Ltd.	0603001619	Oct 5, 2006	Arrangement Equipment for Wood Slab	-	Oct 4, 2016
317	35965	Jun 21, 2013	SCG Distribution Co., Ltd.	0802000673	Feb 27, 2008	-	Breath Alcohol Tester	Feb 26, 2018
318	Petty Patent 5135	Nov 5, 2009	SCG Distribution Co., Ltd.	0703000033	Jan 9, 2007	Warning System for Doze Off	-	Jan 8, 2017

No.	Patent Number	Registration Date	Assignee	Application Number	Filing Date	Patent/Petty Patent	Design Patent	Expiry Date
319	Petty Patent 5155	Dec 4, 2009	SCG Distribution Co., Ltd.	0803001512	Dec 22, 2008	Canvas Tester	-	Dec 21, 2018
320	Petty Patent 6310	Jun 17, 2011	SCG Distribution Co., Ltd.	0903001006	Sep 11, 2009	Multi Wall System	-	Sep 10, 2019
321	37767	Oct 29, 2013	SCG Experience Co., Ltd.	0902001826	Jun 19, 2009	-	Packaging Design	Jun 17, 2019
322	Petty Patent 9002	Jul 23, 2014	SCG Trading Co., Ltd.	1103000443	May 3, 2011	Liquid Coal Fuel	-	May 2, 2021
323	43147	Mar 9, 2015	Siam Sanitary ware Co.,Ltd	1202001026	Apr 23, 2012	-	Water tank	Apr 23, 2022
324	Petty Patent 10316	Aug 31, 2015	SCG Performance Co., Ltd and Ceramic Cement Thai Co., Ltd	1403000301	Mar 28, 2014	Blind tiles	-	Mar 28, 2024
325	Petty Patent 10860	Dec 4, 2015	SCG Performance Co., Ltd and Ceramic Cement Thai Co., Ltd	1403000302	Mar 28, 2014	Tiles	-	Mar 28, 2024
326	Petty Patent 9417	Jan 6, 2015	SCG Cement-Building materials Co., Ltd	1403000992	Sep 1, 2014	Tile support on Roof structure	-	Sep 1, 2024

- **Concession**

Concessions in limestone and gypsum mines are long-lived. Their maturities have been continuously extended because cement is a fundamental product for construction and infrastructure related to the country's economy.

Details of utilized concessions of The Siam Cement Public Company Limited and Companies under SCG Cement-Building Materials are shown in below table

Concessionaire	Location	Type of Mineral	Number of Concession (Copies)	Type of Area	Area (Rai)	Remaining Years of Concession	Expiry Year
The Siam Cement Plc.	Saraburi	Limestone for cement industry	13	RFD	3,683	1	2017
			3	RFD	897	2	2018
			15	RFD	3,012	20	2036
		Pyrophyllite	1	RFD	95	12	2028
			2	RFD	183	16	2032
	Nakorn Sawan	Gypsum	1	RFD	298	15	2031
			1	RFD	278	9	2025
SCG Cement Co., Ltd.	Lampang	Lignite	1	RFD	209	16	2032
The Siam Cement (Lampang) Co., Ltd.	Lampang	Limestone for cement industry	17	RFD	4,987	2	2018
		Shale for cement industry	5	RFD	1,442	2	2018
		Industrial Clay for cement industry	1	Owned by the company	51	13	2029
			1	Owned by the company	280	19	2035
The Siam Cement (Kaeng Khoi) Co., Ltd.	Saraburi	Limestone for cement industry	10	RFD	2,575	11	2027
		Shale for cement industry	3	Owned by the company	874	11	2027
	Lopburi	Industrial Clay for cement industry	1	Owned by the company	218	22	2038



Concessionaire	Location	Type of Mineral	Number of Concession (Copies)	Type of Area	Area (Rai)	Remaining Years of Concession	Expiry Year
The Siam Cement (Ta Luang) Co., Ltd.	Saraburi	Limestone for cement industry	5	RFD	954	14	2030
		Industrial Clay for cement industry	1	Owned by the company	279	10	2026
			3	Owned by the company	840	22	2038
			1	Owned by the company	86	8	2024
The Siam Cement (Thung Song) Co., Ltd.	Nakorn Sri Thammarat	Limestone for cement industry	19	RFD	4,973	19	2035
	Krabi	Industrial Clay for cement industry	2	Owned by the company	372	22	2038
Sirathai Sanguan (2540) Co., Ltd.	Khonkaen	Limestone for construction industry	1	Owned by the company	167	5	2020
Khammouane Cement Co., Ltd.	Laos	Limestone for cement industry	1	RFD	21,500 (3,440 ha)	31	2047
		Laterite for cement industry			5,300 (848 ha)	31	2047
		Clay			4,675 (748 ha)	31	2047
Kampot Cement Co.,Ltd.	Cambodia	Limestone for cement industry	1	Ministry of industry, Mines and Energy	6,133	50	2066

Concessionaire	Location	Type of Mineral	Number of Concession (Copies)	Type of Area	Area (Rai)	Remaining Years of Concession	Expiry Year
PT Tambang Semen Sukabumi (For PT.Semen Jawa)	Indonesia	Limestone for cement industry (Mt. Guha)	1	Ministry of forestry	3,006	22	2038
		Limestone for cement industry (Mt. Batu)	1	Owned by resident	741	23	2039
		Shale for cement industry	1	Ministry of forestry	743	22	2038
Mawlamyine Cement Limited	Myanmar	Limestone for cement industry	1	Ministry of forestry	800 (320 Acre)	20	2036

- **BOI Certificates**

SCG adheres to the policy to apply for the BOI's privileges in every business it is eligible for. The Group believes that it can fully operate under all BOI's rules and regulations due to its transparent operation based on good corporate governance.

- **SCG Chemicals**

The Business acquired BOI tax incentives such as machinery import duty exemption, corporate tax exemption for 8 years from the date of first revenue received, and 50 percent reduction of corporate income tax for 5 years after the exemption period. Details are shown below:

Project	Date Acquired	Expiry of Tax Incentives
PP 3	Jul 24, 2007	Mar, 2023
HDPE 4	Jul 24, 2007	Feb, 2023
Jetty and Terminal	Oct 2, 2003	Dec, 2016
	May 19, 2004	Jul, 2017
	Nov 25, 2004	Jan, 2018
	Dec 12, 2007	Apr, 2023
	Aug 14, 2009	Nov, 2023
	Mar 5, 2010	May, 2024

Project	Date Acquired	Expiry of Tax Incentives
Jetty and Terminal	Jun 26, 2012	Nov, 2025
	Aug 4, 2014	Mar, 2028
Olefins (MOC)	Dec 25, 2006	Jan, 2023
PE COMPOUND	Feb 10, 2003	Feb, 2017
	Mar 11, 2004	Mar, 2018
	Mar 26, 2004	Feb, 2020
	Apr 10, 2006	Nov, 2019
	May 23, 2006	Jul, 2020
	Dec 7, 2007	Mar, 2021
	Apr 20, 2012	Mar, 2026
	Feb 10, 2014	Dec, 2027
STEAM	Oct 30, 2009	Apr, 2024
CATALYST	Aug 7, 2009	8 years from the date of first revenue received
INDUSTRIAL WAX	Feb 28, 2013	Nov, 2026
DPEX (LDPE)	Nov 22, 2013	8 years from the date of first revenue received
R&D (SCG CHEM)	May 6, 2011	Oct, 2026
R&D (SCG CHEM)	May 27, 2011	8 years from the date of first revenue received
R&D (SCG CHEM)	Nov 10, 2011	Dec, 2024
ISOPRENE, Piperylene and DI-Cyclopentadiene (DCPD) (SCG CHEM)	May 21, 2013	8 years from the date of first revenue received
Butene-1 and Methyl Tertiary Butyl Ether (MTBE) (SCG CHEM)	May 21, 2013	8 years from the date of first revenue received
R&D (SCG CHEM)	May 7, 2014	8 years from the date of first revenue received
R&D (SCG CHEM)	Jul 24, 2014	8 years from the date of first revenue received
R&D (SCG CHEM)	Jul 24, 2014	8 years from the date of first revenue received
R&D (SCG CHEM)	Aug 18, 2014	8 years from the date of first revenue received

Project	Date Acquired	Expiry of Tax Incentives
R&D (SCG CHEM)	Sep 4, 2014	8 years from the date of first revenue received
R&D (SCG CHEM)	Sep 23, 2014	8 years from the date of first revenue received
R&D (SCG CHEM)	Sep 9, 2015	8 years from the date of first revenue received
R&D (SCG CHEM)	Nov 3, 2015	8 years from the date of first revenue received
CALIBRATION	Jun 30, 2003 Nov 21, 2003 May 22, 2012	May, 2019 Jun, 2018 Nov, 2025
Industrial Zone	Dec 4, 1997	Mar, 2018
Waste water treatment, Plant Industrial Waste and Toxic Chemicals Management	Mar 20, 2008	Apr, 2023
Human resources development	Dec 16, 2011	Jan, 2027
PVC RESIN	Aug 5, 2005	Jul, 2020
PROFILE PIPE JOINT	Dec 26, 2002 Dec 26, 2003 Apr 23, 2004 Dec 16, 2004 Dec 16, 2004 Oct 4, 2005 Sep 18, 2006 Sep 18, 2006 Dec 29, 2010 Mar 11, 2011 May 14, 2012 Jul 11, 2012 Sep 25, 2012 Mar 22, 2013 Jul 17, 2015	Jan, 2017 Feb, 2017 Jan, 2018 Mar, 2018 Jan, 2018 Oct, 2018 Jul, 2019 Mar, 2020 Jan, 2024 May, 2024 Mar, 2025 Jul, 2025 Oct, 2025 Sep, 2026 8 years from the date of first revenue received

Project	Date Acquired	Expiry of Tax Incentives
PROFILE PIPE JOINT	Oct 8, 2015	8 years from the date of first revenue received
MOULD	Aug 23, 2005 Nov 25, 2010	Aug, 2018 Nov, 2023
Recycling and reuse of unwanted material	Oct 16, 2015	8 years from the date of first revenue received
Manufacture of biological fertilizers, organic fertilizers or soil conditioner	Apr 21, 2015	8 years from the date of first revenue received

The project which receives corporate tax exemption for 8 years from the first date revenue received but doesn't receive corporate tax reduction:

Project	Date Acquired	Expiry of Tax Incentives
R&D (SCG CHEM)	Aug 27, 2009	8 years from the date of first revenue received
R&D (SCG CHEM)	Oct 20, 2011	9 years from the date of first revenue received
R&D (SCG CHEM)	Feb 10, 2012	8 years from the date of first revenue received
R&D (TPC)	Jun 30, 2003	8 years from the date of first revenue received

The project which receives corporate tax exemption for 7 years from the first date revenue received but doesn't receive corporate tax reduction:

Project	Date Acquired	Expiry of Tax Incentives
PIPE, JOINT	Dec 15, 2009	Feb, 2017
	May 6, 2011	Jul, 2018
	Jul 11, 2012	Mar, 2020
	Jan 21, 2014	7 years from the date of first revenue received
	Jul 17, 2015	7 years from the date of first revenue received
	Oct 8, 2015	7 years from the date of first revenue received

The project which receives corporate tax exemption on corporate net profit in an amount equivalent or less than an investment amount of modification project for 3 years from the first date of revenue generated:

Project	Date Acquired	Expiry of Tax Incentives
HDPE1 (Modification)	Dec 23, 2013	Dec, 2016
PP1 (Modification)	Feb 11, 2014	Mar, 2018

The project which receives 8 years of corporate tax exemption in an amount equivalent to 100% of an investment amount excluding cost of land and working capital for the projects with measures to reduce environmental impact. So that the project receives the corporate tax exemption on its revenue from existing operation.

Project	Date Acquired	Expiry of Tax Incentives
HDPE2	Feb 3, 2011	Feb, 2019
PP1	Feb 3, 2011	Feb, 2019
LDPE	Feb 3, 2011	Feb, 2019
TERMINAL/ JETTY	Oct 10, 2012	Oct, 2020
PVC RESIN	May 31, 2013	May, 2021
	Aug 15, 2014	Aug, 2022
	Nov 7, 2014	Nov, 2022
PVC PASTE RESIN	Oct 16, 2014	Oct, 2022

The project which receives 3 years of corporate tax exemption in an amount equivalent to 70% of an investment amount excluding cost of land and working capital for the investment promotion in energy for sustainable development. So that the project receives the corporate tax exemption on its revenue from existing operation.

Project	Date Acquired	Expiry of Tax Incentives
COMPOUNDED PLASTICS	May 31, 2013	May, 2016
VINYL CHLORIDE MONOMER (VCM)	May 31, 2013	May, 2016

○ SCG Packaging

Details of businesses in SCG Paper receiving BOI privileges:

Project	Date Acquired	Expiry of Tax Incentives
Pulp	Feb 6, 2015	Feb, 2018
Uncoated paper	Jan 11, 2007	May, 2016
Hygienic plastic coated paper	Jul 12, 2012	Jul, 2018
	Mar 7, 2013	Jun, 2020
Kraft Paper	Feb 14, 2013	Mar, 2019
	Feb 14, 2013	Sep, 2019
	Feb 14, 2013	Dec, 2020
	May 20, 2013	May, 2021
	Feb 20, 2014	Feb, 2022
	Aug 16, 2013	Oct, 2017
	Jul 21, 2015	May, 2018
	Jun 23, 2015	Sep, 2018
Eucalyptus Forest	Feb 6, 2013	Jun, 2021
Cogeneration Plant	Sep 22, 2005	8 years from the date of first revenue received
	Apr 5, 2010	Mar, 2019
	Dec 11, 2014	8 years from the date of first revenue received
Corrugated Container	Apr 1, 2013	Sep, 2020
	Apr 1, 2013	Sep, 2015
	Apr 1, 2013	Oct, 2019
	May 14, 2013	8 years from the date of first revenue received
	Sep 27, 2013	Mar, 2017
Corrugated Sheet and Container	Jul 24, 2007	Jan, 2022

○ SCG Cement-Building Materials

Details of businesses in SCG Cement-Building receiving BOI privileges:

Project	Date Acquired	Expiry of Tax Incentives
Waste Heat Power Generator (WHG)	Nov 6, 2007	Jan, 2018
Solid Waste Pre-Treatment Plant	May 31, 2010	Dec, 2018
Environmental Laboratory	Jun 29, 2012	Apr, 2027
Refuse Derived Fuel (RDF)	Jan 8, 2014 Jun 22, 2015	Jul, 2027 Sep, 2023
Co-generation Power Plant	Dec 2, 2014	8 years from the date of first revenue received
Production line of ceramic roof tiles LINE 3	May 25, 2005	May, 2018
Production line of ceramic roof tiles LINE 4	Dec 4, 2012	Nov, 2020
Production line of ceramic roof tiles LINE 5	Aug 13, 2013	7 years from the date of first revenue received
Fiberglass insulation	Nov 9, 2010	Feb, 2020
Export Service Center	Mar 2, 2010	Mar, 2018
Shipping Company	Feb 26, 2013	8 years from the date of first revenue received
Port operations for loading vessels (Wat Ban Dai)	Aug 20, 2013	Dec, 2022

○ Corporate & Investment

Details of businesses in Corporate & Investment receiving BOI privileges:

Project	Date Acquired	Expiry of Tax Incentives
SOLAR ROOF	Mar 20, 2014	8 years from the date of first revenue received

Trademarks

The key trademarks of The Siam Cement Public Company Limited and its subsidiaries comprise of “Elephant Device in Hexagon”, “Elephant Device in Circle”, “Erawan Device in Circle”, “Tiger Device in Circle” and “Elephant Device in Hexagon and SCG” etc. There are approximately 557 trademarks, which are registered at The Department of Intellectual Property.



Investment policy in subsidiaries and associate companies

The Siam Cement Public Company Limited is the holding company. Therefore, to ensure clarity in business management and effective resource management to strengthen the organization management according to the long term strategy and corporate governance. SCG has diversified into three core businesses, namely SCG Cement-Building Materials, SCG Chemicals and SCG Packaging. And SCG Investment was established to manage investment in jointly invest with leading companies in other businesses, such as agricultural machinery business, automotive business, automotive accessories and equipments business, and steel business. The returns are in term of dividend and management fee.

Please refer to page 5-18 for shareholding structure of direct and indirect ownership of company, associate, subsidiaries, and joint ventures.

5. Legal Disputes

The Case of the Theft of Company Property (Form of Ordinary Share Certificates) and Fraud to the Company's Shareholder by an ex-employee.

In the first quarter of 2009, the Company lodged a complaint with the police officers against an ex-employee for the theft (form of ordinary share certificate) and the forgery of 672,000 Company's ordinary share certificates. In the second quarter of 2009, the Company was notified by the Civil Court that the heirs and the estate administrator of the shareholder whose shares were forged ("Plaintiff") filed a civil lawsuit against the Company and relevant individuals and juristic persons for compensation. At present, the case has reached the final judgment. The summary of judgments rendered by each court is as below.

In the fourth quarter of 2011, the Civil Court had the judgment that the ex-employee committed a tort against the Plaintiff and ordered him to return the shares or pay the shares prices with interest until the payment is fully made, together with the dividend which the Plaintiff should have received. In addition, the court also decided that the Company, as the employer, shall be jointly liable to the Plaintiff. The Company and the Plaintiff have appealed the judgment of the Civil Court to the Appeal Court.

On 29 April 2014, the Appeal Court has made a decision on the case, ordering (i) the ex-employee who committed a tort to return shares of the Company to the Plaintiff or to pay the Plaintiff the share price at the last trading price of the Company's shares on the date of payment, which shall not be less than Baht 314.38 per share, together with dividends and an interest until the date of payment, and (ii) the Company, as employer, Thailand Securities Depository Co., Ltd., and relevant persons to be jointly responsible with the ex-employee. On 23 July 2014, the Company has appealed the judgment of the Appeal Court to the Supreme Court and lodged amendment of the Plaintiff's appellate motion to the Supreme Court on 30 September 2014. Consequently on December 22, 2015, the Supreme Court has upheld the judgment of the Appeal Court. Therefore, the Company has recorded the provision for compensation for the amount which the Company is expected to be liable, in the statement of financial position as at 31 December 2015 of Baht 201 million (2014: Baht 349 million).

On 21 January 2016, the Company has fully made compensation to the Plaintiff according to the judgment by return of the shares with the ordinary share certificates and payment of (i) the dividend from the shares prior to the commencement of a civil lawsuit with interest thereon; (ii) the dividend from the shares from and after the commencement of a civil lawsuit with interest thereon; and (iii) any costs and expenses paid for court procedure, accounting for THB 319 million in total. The Company is presently preparing to file a civil lawsuit against all relevant persons for recourse.

Risk Reduction of Map Ta Phut Projects

Due to the Central Administrative Court ordered governments authorities to order the temporary suspension of the projects representing a total of 18 projects of SCG Chemicals in the Map Ta Phut

Industrial Estate and vicinity of Rayong Province. On September 2, 2010, the Central Administrative Court delivered its judgement to revoke permits of the projects, for which such permits were issued after the Constitution B.E. 2550 came into force, and fall within the list of 11 types of serious impact projects issued on August 31, 2010 by the Ministry of Natural Resources and Environment. As a result of the judgement, almost all projects of the Group which are considered as non-serious impact projects are able to continue their operations, except for 1 project of the Group namely the Capacity Expansion of Vinyl Chloride Monomer Project of Thai Plastic and Chemicals Public Company Limited; which fall within the list. Around the end of 2012, such project has complied with the paragraph 2 of Article 67 of the Constitution B.E. 2550. The Industrial Estate Authority of Thailand (IEAT) was of the opinion that the project has fulfilled the requirements and accordingly, IEAT has submitted the issue to the prosecutor, requesting the prosecutor to request the Supreme Administrative Court to revoke the temporary suspension order in order to allow the project to resume construction. On April 1, 2013, the prosecutor has filed the petition to the Supreme Administrative Court. Later, in July 2014, the Supreme Administrative Court has revoked the temporary suspension of the project. In October 2014, the Group obtained a permit from IEAT and the project is able to operate as normal.

As for the ongoing lawsuit filed by the Stop Global Warming Association, the plaintiffs and defendants have appealed with the Supreme Administrative Court. Despite not being a party to the lawsuit, SCG has kept close track of the pending case. However, there has been no progress on the case so far.

6. Other Related Information

1. Company Information

Name	The Siam Cement Public Company Limited
Stock code	SCC (Listed on the Stock Exchange of Thailand - SET)
Registration No	0107537000114
Type of Business	Holding Company
Website	www.scg.co.th
Year of Establishment	1913
First Trade Date	April 30, 1975
Headquarter Address	1 Siam Cement Road, Bangsue, Bangkok 10800
Registered capital	1,600 Million Baht
Paid-up capital	1,200 Million Baht
	Comprised of 1,200 Million Ordinary shares
Par value	1 Baht par value
Preferred Share	None
Fiscal Year	January 1 – December 31 of each year
Shareholders	The Crown Property Bureau Group holds approximately 32.4% of shares while the remaining shares are held by other institutional and individual shareholders
Contacts	<p>Corporate Headquarters</p> <p>Tel. 66-2586-3333, 66-2586-4444</p> <p>Fax 66-2586-2974</p> <p>e-mail: info@scg.co.th</p> <p>Corporate Secretary Office</p> <p>Tel. 66-2586-6098</p> <p>Fax 66-2586-3007</p> <p>e-mail: corporate@scg.co.th</p> <p>Investor Relations Department</p> <p>Tel. 66-2586-3309</p> <p>Fax 66-2586-3307</p> <p>e-mail: invest@scg.co.th</p>

Corporate Communications Office

Tel. 66-2586-3770

Fax 66-2586-2974

e-mail: corpcomm@scg.co.th

Independent Directors as Minority Shareholders'

Representative

Fax 66-2586-3007

e-mail: ind_dir@scg.co.th

2. Investment in subsidiaries, associates, jointly-controlled entity and other companies of which their operations are significant are disclosed in page 5-18.

3. References

Registrars	Thailand Securities Depository Company Limited
Address	The Stock Exchange of Thailand Building 1 st Floor, 93 Ratchadapisek Road, Dindaeng, Bangkok 10400
Tel.	66-2009-9000
Fax	66-2009-9991
e-mail	SETContactCenter@set.or.th
Website	http://www.set.or.th/tsd
Auditors	KPMG Phoomchai Audit Ltd. Mr. Winid Silamongkol (Certificated Public Accountant Registration No. 3378) or Ms. Sureerat Thongarunsang (Certificated Public Accountant Registration No. 4409) or Ms. Pornthip Rimdusit (Certificated Public Accountant Registration No. 5565)
Address	1 Empire Tower 50 th – 51 st Floors, 1 South Sathorn Road, Yannawa, Sathorn, Bangkok 10120
Tel.	66-2677-2000
Fax	66-2677-2222
Legal Advisors	SCG Legal Counsel Limited

Address	1 Siam Cement Road, Bangsue, Bangkok 10800
Tel.	66-2586-5777 or 66-2586-5888
Fax	66-2586-2976
Trustee of Debenture Holders	TMB Bank Public Company Limited
Address	3000 Phahonyothin Road, Chomphon, Chatuchak, Bangkok 10900
Tel.	66-2299-1111
Fax	66-2990-6010
Website	www.tmbbank.com