



บริษัท เอ็นซีแอล อินเตอร์เนชั่นแนล โลจิสติกส์ จำกัด (มหาชน)  
NCL INTERNATIONAL LOGISTICS PUBLIC COMPANY LIMITED

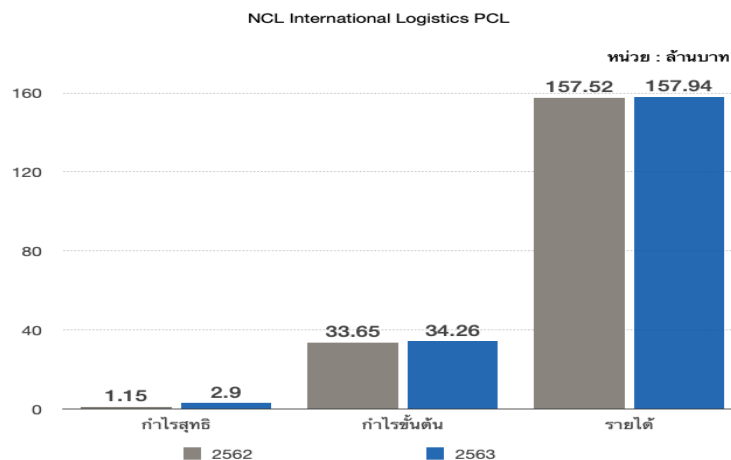
No.NCL-M 13/20

May 13, 2020

Subject: The clarification and analysis of the management of NCL International Logistics Public Company Limited and its subsidiaries (the "Company") on the Company's financial statements for the 3 months ended March 31, 2020 that changed more than 20 percent.

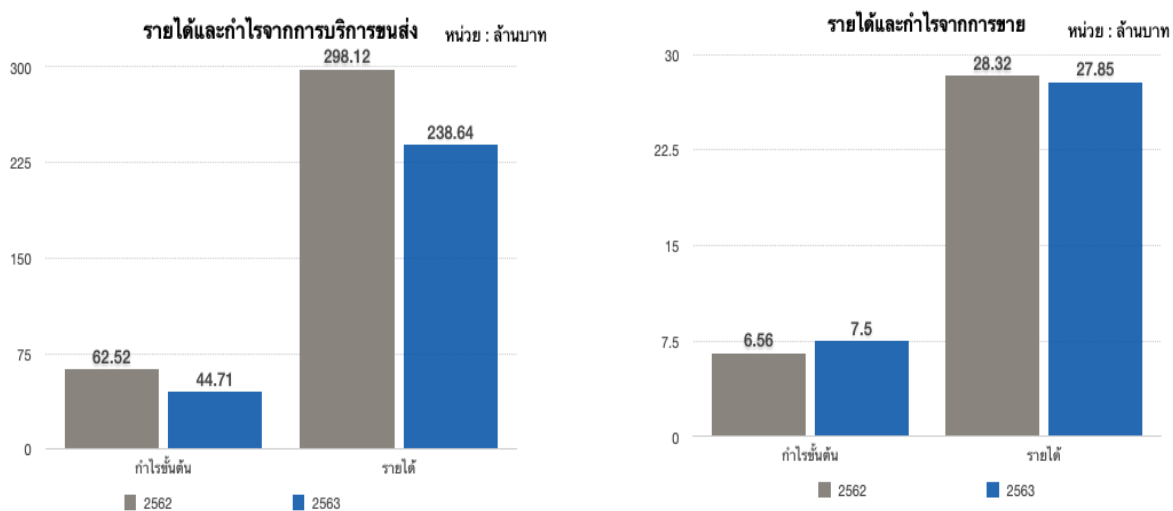
To: President,  
  
The Stock Exchange of Thailand

NCL International Logistics Public Company Limited and its subsidiaries (the "Company") would like to clarify the description and analysis of the management. Based on the Company's financial statements for the 3 months ended March 31, 2020



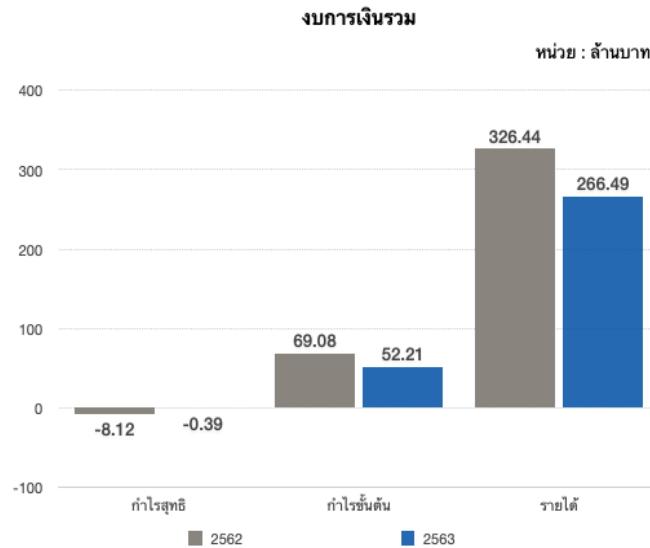
Business specific quarterly financial statement ended on 31 March 2020 indicates the net profit of 2.90 million baht which increased from the same period last year 1.75 million baht or 152.17% because the company had other income increase from the rent of tractor-trailer and container in total amount of approximately 1.28 million baht and interest income from the disposal of investment in subsidiaries in amount of 2.01 million baht, although this year there is corona 2019 epidemic situation, which affects all industrial sectors across the country and around the world. The company is also affected, as can be seen from the revenue generated this year, some customers who were affected by such situation used less transportation services. However, the company gained new customers to

compensate the lack of revenue, causing revenue and gross profit in this period to be slightly higher than the same period last year. The company closely monitors the situation in order to adjust strategy, management, and resolve any situation in a timely manner.



For the collective financial statement, the Company Group earns from transportation service in quarterly basis, ended on 31 March 2020, for 238.64 million baht decreased from the same quarter in the previous year for 298.12 million baht (19.95%) resulting in the decrease of the Company's gross profit of 17.81 million baht (28.48%), because in 2020 there was no operating result of subsidiaries LG Container Lines Company Limited (in Thailand) and SKK Inter Logistics Company Limited (carry out domestic transportation using tractor and trailer) included since the company sold all investments of both companies during the year 2019. In addition, LG Container Line, subsidiary in Singapore, which conducts business as a carrier with its own containers, gained lower revenue from transportation due impact from corona 2019 epidemic situation resulting in not being able to relocate containers as fast as usual resulting in lower revenue and gross profit.

Company group's quarterly income derived from sales, ended on 31 March 2020, is 27.85 million baht, caused by the subsidiary, Grace Water Mate Co., Ltd. ("GWM"), running the business of kidney cleanser and medical supplies manufacturing and distribution, which is decrease from the same quarter of the previous years for 28.32 million baht, however, the company can better manage production costs and sales costs. As a result, the company had a gross profit increase of 0.94 million baht or 14.33 percent and a net profit in proportion to the company holding of 0.68 million baht.



The combination of such two incomes results in the Company Group's total income of 266.49 million baht which is decreased from the same period last year 18.36% and the gross profit is 52.21 million baht which decreased from the same period last year 24.42%.

The quarterly turnover ended on 31 March 2020 indicates the Company Group's net loss of 0.39 million baht or 0.15% of income derived from services and sales, better than the previous year which had a net loss of 8.12 million baht because of the decrease in gross profit due to above reasons, but the Group has other income and financial income (interest income) increased by 6.63 million baht from tow truck rental and interest income from sales of investments in subsidiaries. Selling and administrative expenses and other expenses decreased by a total of 22.15 million baht since this year, there are no expenses from LG Container Line Company Limited and SKK Inter Logistics Company Limited included since investments in these companies were sold during the year 2019. In addition, in the same period last year, expenses of NCL Singapore subsidiary increased due to the job expansion for LCL, there are more employees, and the office was relocated to support the expansion, resulting in cost of relocating and writing off existing office improvements. There was no such expense in this year, which made the Group's operating results improve from previous year by 95.20%.

Please be inform accordingly,

Yours sincerely,

(Mr. Kitti Phuathavornskul , Ms.Netirad Sang- ngam)