



บริษัท เอ็นซีแอล อินเตอร์เนชั่นแนล โลจิสติกส์ จำกัด (มหาชน)
NCL INTERNATIONAL LOGISTICS PUBLIC COMPANY LIMITED

No.NCL-M 18/20

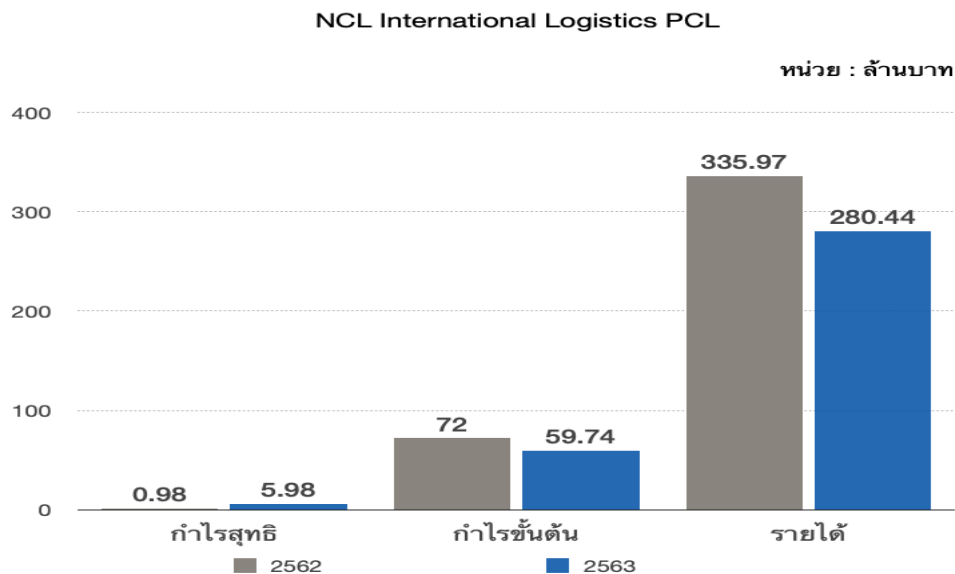
August 13, 2020

Subject: The clarification and analysis of the management of NCL International Logistics Public Company Limited and its subsidiaries (the "Company") on the Company's financial statements for the 6 months ended June 30, 2020 that changed more than 20 percent.

To: President,

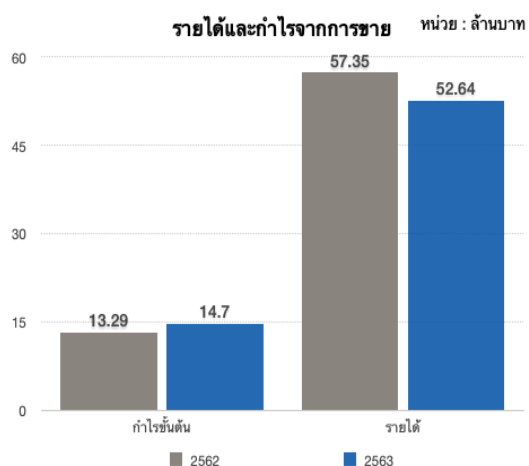
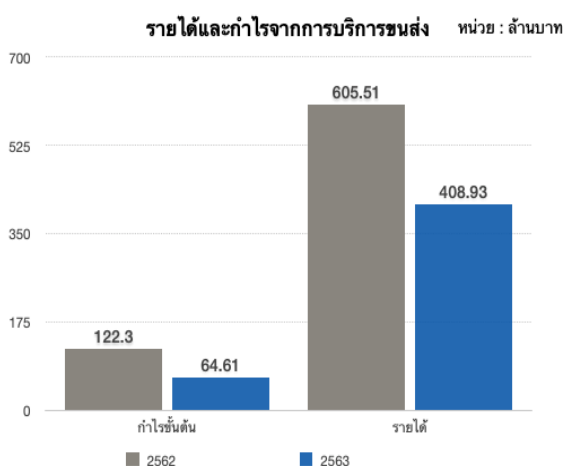
The Stock Exchange of Thailand

NCL International Logistics Public Company Limited and its subsidiaries (the "Company") would like to clarify the description and analysis of the management. Based on the Company's financial statements for the 6 months ended June 30, 2020



Separate financial statements for the 6-month period ended on June 30, 2020 have a net profit of 5.98 million baht, which is increased from the same period of last year by 5 million baht or 510.20 percent. Although this year

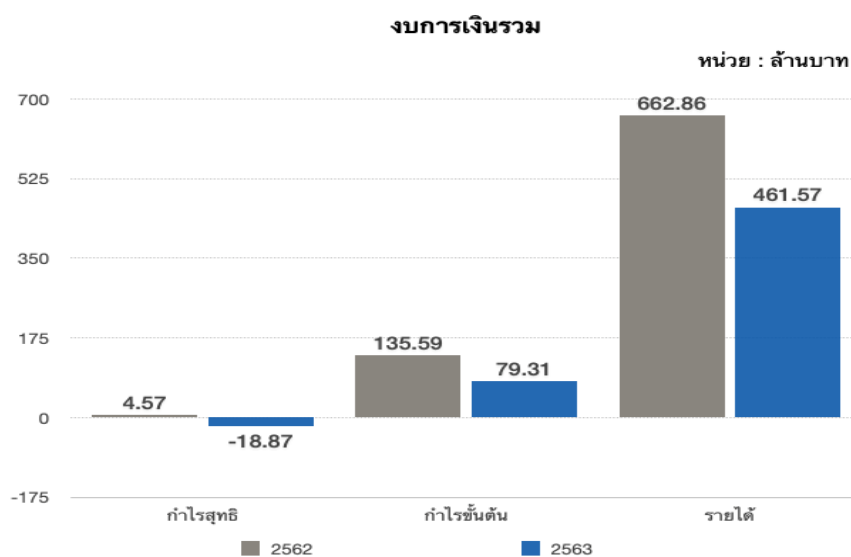
there has been the COVID-19 epidemic situation affecting all industries across the country and around the world, which the Company has also been affected, as can be seen from revenue generated this year. Customers affected by such situation have reduced their use of transportation service, which resulted in a decrease in the Company's gross profit but the Company has additional revenue from special projects at 6.85 million baht, rental of tractor-trailer and container in total amount of approximately 1.79 million baht and interest income from disposal of investments in subsidiaries amounting to 4.27 million baht. In addition, selling and administrative expenses is 5.57 million baht reduced from the previous year. As a result, the Company's financial statement has a net profit of 5.98 million baht.



Consolidated financial statements, the Group has revenue from transportation services for the 6-month period ended on June 30, 2020 in amount of 408.93 million baht, which is decrease from the same period of last year by 196.58 million baht or 32 percent, as a result, the Group's gross profit decreased by 57.69 million baht or 47 percent. Since in 2020, the Company and its overseas subsidiaries have been affected by the COVID-19 epidemic situation, in addition, in the year 2020, operating results from subsidiaries including LG Container Line Company Limited (in Thailand) and SSK Inter Logistics Company Limited (for domestic transportation using tractor and trailer) are not inclusive because the company disposed the entire investment of both companies during the year 2019, resulting in lower income and gross profit.

The Group has revenue from sales for the 6-month period ended on June 30, 2020 in amount of 52.64 million baht, as subsidiary, Grace Water Med Company Limited (“GWM”), operating business of producing and selling dialysis solutions and various medical supplies, which decreased from the same period of last year by 4.71 million baht but the company can better manage production costs and sales costs. As a result, gross profit has increased

by 1.40 million baht or representing 11 percent and net profit in proportion to the Company's shareholding is in an amount of 1.30 million baht.



The Group has total revenues of 461.57 million baht, which decreased by 30.37 % from the previous year, and gross profit of 79.31 million baht, which decreased by 41.51% from the previous year.

Operating results for the 6-month period ended on June 30, 2020, the Group had a loss of 18.87 million baht or 4.09 percent of revenue from services and sales revenue which decreased from the last year has net profit 4.57 million baht as the gross profit of the group's transportation service has been reduced by the aforementioned cause. Also this year, the Board of Directors decided to close a subsidiary in Vietnam and to cease operations of a subsidiary in China in order to halt any long-term losses that may arise from the impact of the COVID-19 epidemic situation in order to protect future interests of the Company and shareholders. The Company continues to monitor the situation closely in order to adjust management strategies and resolve the situation.

Please be inform accordingly,

Yours sincerely,

(Mr. Kitti Phuathavornskul , Ms.Netirad Sang- ngam)